



SunLong Biotech Co.,LTD
Tel: 0086-571- 56623320 Fax:0086-571- 56623318
E-mail:sales@sunlongbiotech.com
www.sunlongbiotech.com

[KD-Validated] Anti-Phospho-DNA PKcs (S2056) Rabbit Monoclonal Antibody

Cat No.: KD-10731

Aliases:

PRKDC; Protein Kinase, DNA-Activated, Catalytic Subunit; DNPk1; P460; DNA-Dependent Protein Kinase Catalytic Subunit; DNA-PKcs; DNA-PKC; DNAPK; XRCC7; HYRC1; P350; HYRC; Protein Kinase, DNA-Activated, Catalytic Polypeptide; DNA-PK Catalytic Subunit; EC 2.7.11.1; DNAPKc; Hyper-Radiosensitivity Of Murine Scid Mutation, Complementing 1; DNA-PKCS; DNAPKC; IMD26

Background:

UniProt Entry: [P78527](#);NCBI Gene Entry: [5591](#)

Application Information

Molecular Weight: Predicted, 469 kDa, observed, 469 kDa Clonality: Rabbit monoclonal antibody Clone ID: 23GB2075 Species Reactivity: Human Applications Used: Western Blotting (WB), Flow Cytometry (FCM), Immunocytochemistry (IC)

Immunogen

A synthesized peptide derived from human Phospho-DNA PKcs (S2056)

Isotype

Rabbit IgG

Storage Buffer

Supplied in PBS (pH 7.4) containing 50% glycerol, and 0.02% sodium azide.

Storage

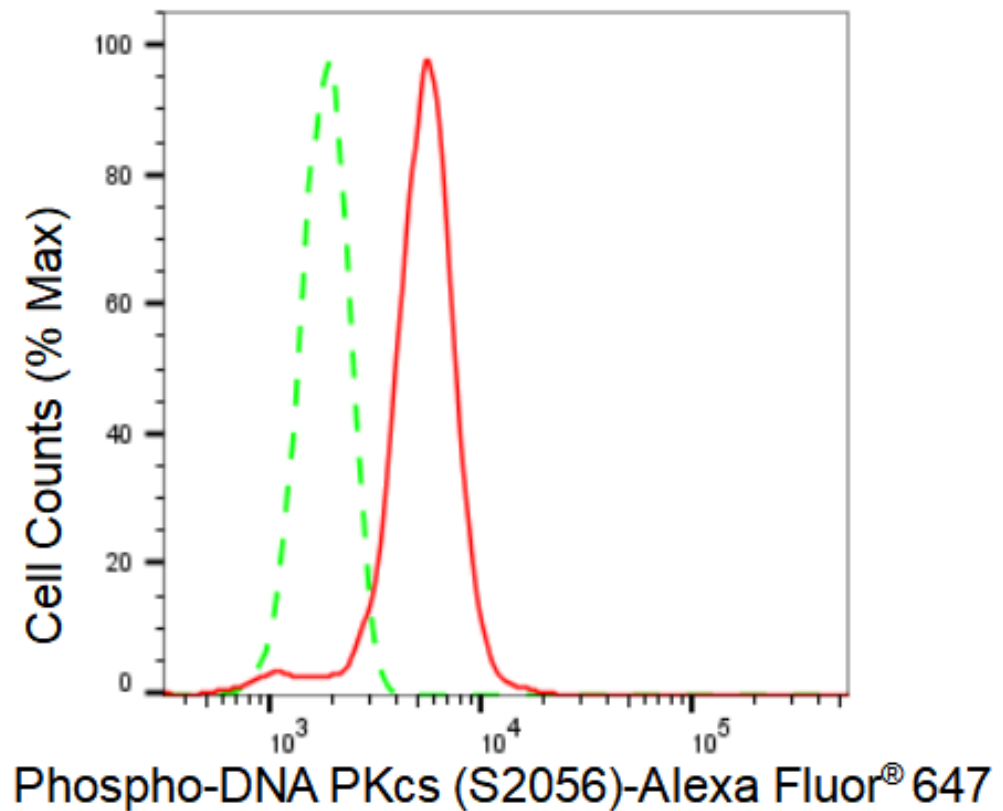
Store at -20 °C for one year.

Recommended Dilutions

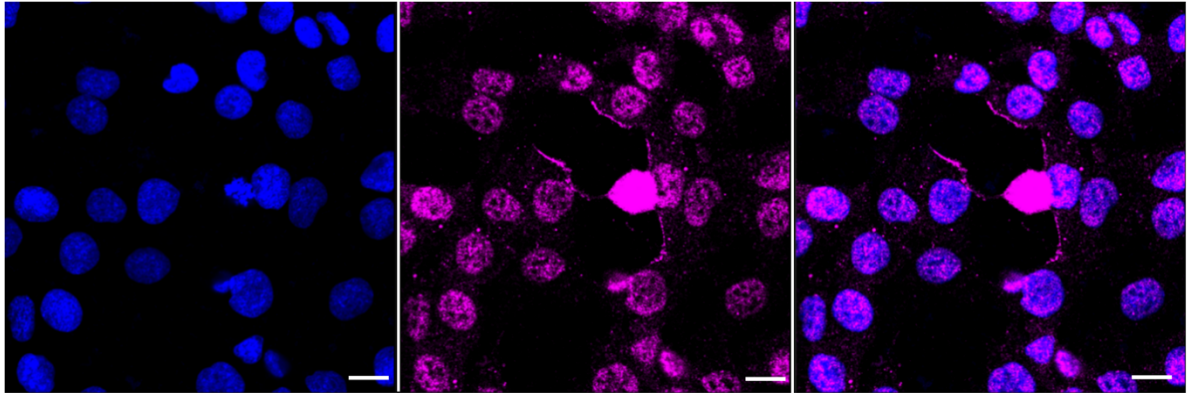
Western Blotting (WB): 1:1,000-1:5,000 Flow Cytometry (FCM): 1:2,000
Immunocytochemistry (IC): 1:1,000

Protocols

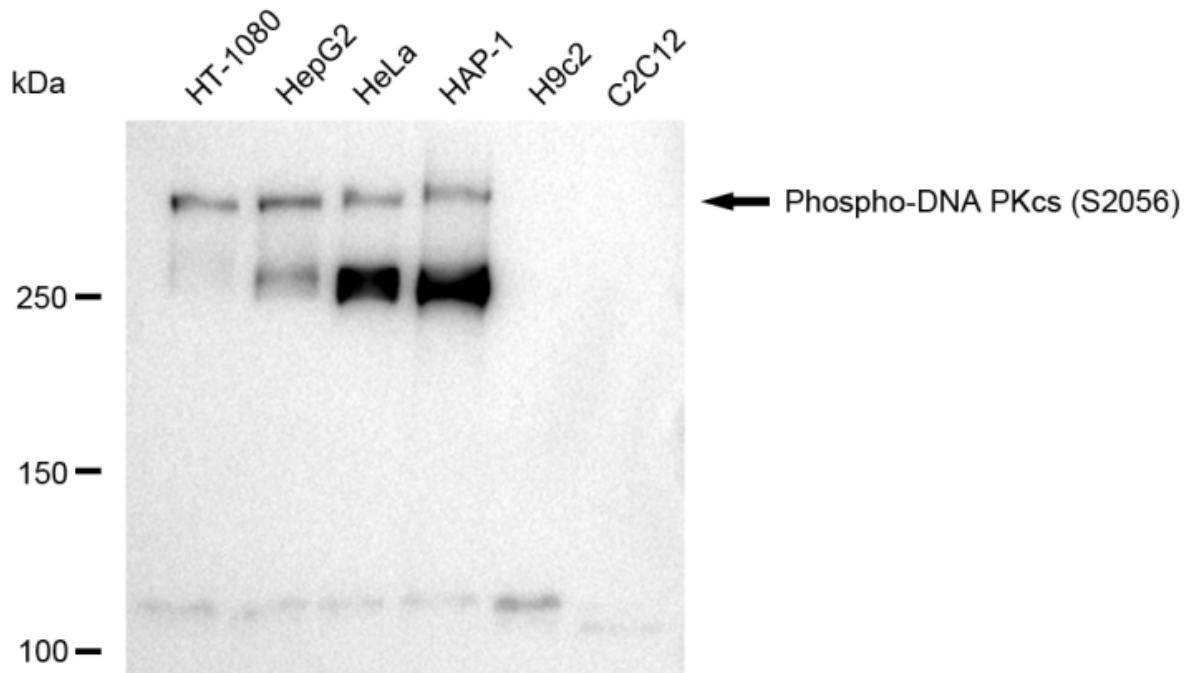
For general and specific antibody protocols please visit our website. Read all instructions before using this product.



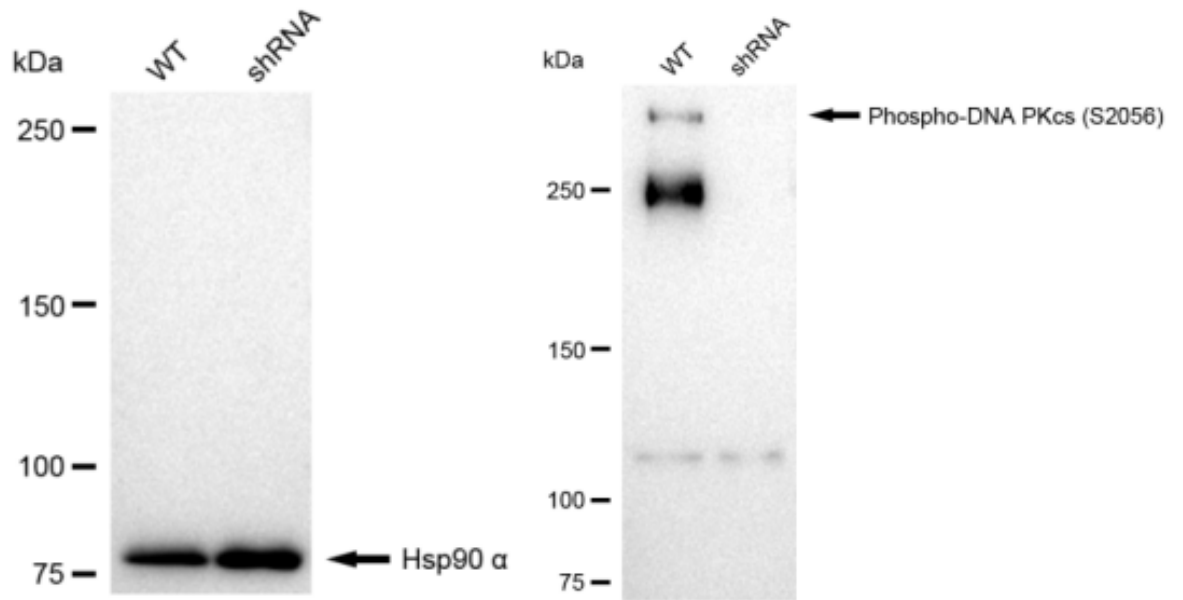
Flow cytometric analysis of Phospho-DNA PKcs (S2056) expression in HT-1080 cells using Phospho-DNA PKcs (S2056) antibody 1:2,000. Green, isotype control; red, Phospho-DNA PKcs (S2056).



Immunocytochemical staining of HT-1080 cells with Phospho-DNA PKcs (S2056) antibody 1:1,000. Nuclei were stained blue with DAPI; Phospho-DNA PKcs (S2056) was stained magenta with Alexa Fluor® 647. Images were taken using Leica stellaris 5. Protein abundance based on laser Intensity and smart gain: Medium. Scale bar: 20 μ m.



Western blotting analysis using anti-Phospho-DNA PKcs (S2056) antibody 1:5,000 and HRP-conjugated goat anti-rabbit secondary antibody 1:20,000 respectively. Image was developed using FeQ™ ECL Substrate Kit .



Western blotting analysis using anti-Phospho-DNA PKcs (S2056) antibody 1:5,000 and HRP-conjugated goat anti-rabbit secondary antibody 1:20,000 respectively. Image was developed using FeQ™ ECL Substrate Kit .