



SunLong Biotech Co.,LTD  
Tel: 0086-571- 56623320 Fax:0086-571- 56623318  
E-mail:sales@sunlongbiotech.com  
www.sunlongbiotech.com

## [KD-Validated] Anti-PRKCSH Antibody Rabbit Monoclonal Antibody

Cat No.: KD-10730

### Aliases:

PRKCSH; Protein Kinase C Substrate 80K-H; Glucosidase 2 Subunit Beta; VASAP-60; PKCSH; G19P1; GIIB; Protein Kinase C Substrate 60.1 KDa Protein Heavy Chain; Advanced Glycation End-Product Receptor 2; Glucosidase II Subunit Beta; Hepatocystin; GluIIbeta; GIIBeta; AGE-R2; 80K-H; PCLD; PLD1; Protein Kinase C Substrate, 80 Kda Protein; Glucosidase II Beta Subuni; Polycystic Liver Disease; AGE-Binding Receptor 2; 80K-H Protein; PCLD1

### Background:

UniProt Entry: [P14314](#);NCBI Gene Entry: [5589](#)

### Application Information

Molecular Weight: Predicted, 59 kDa, observed, 80 kDa Clonality: Rabbit monoclonal antibody Clone ID: 24GB1325 Species Reactivity: Human Applctanions Tsed: Western Blotting (WB), Flow Cytometry (FCM)

### Immunogen

A synthesized peptide derived from human GLU2B

### Isotype

Rabbit IgG

### Storage Buffer

Supplied in PBS (pH 7.4) containing 50% glycerol, and 0.02% sodium azide.

**Storage**

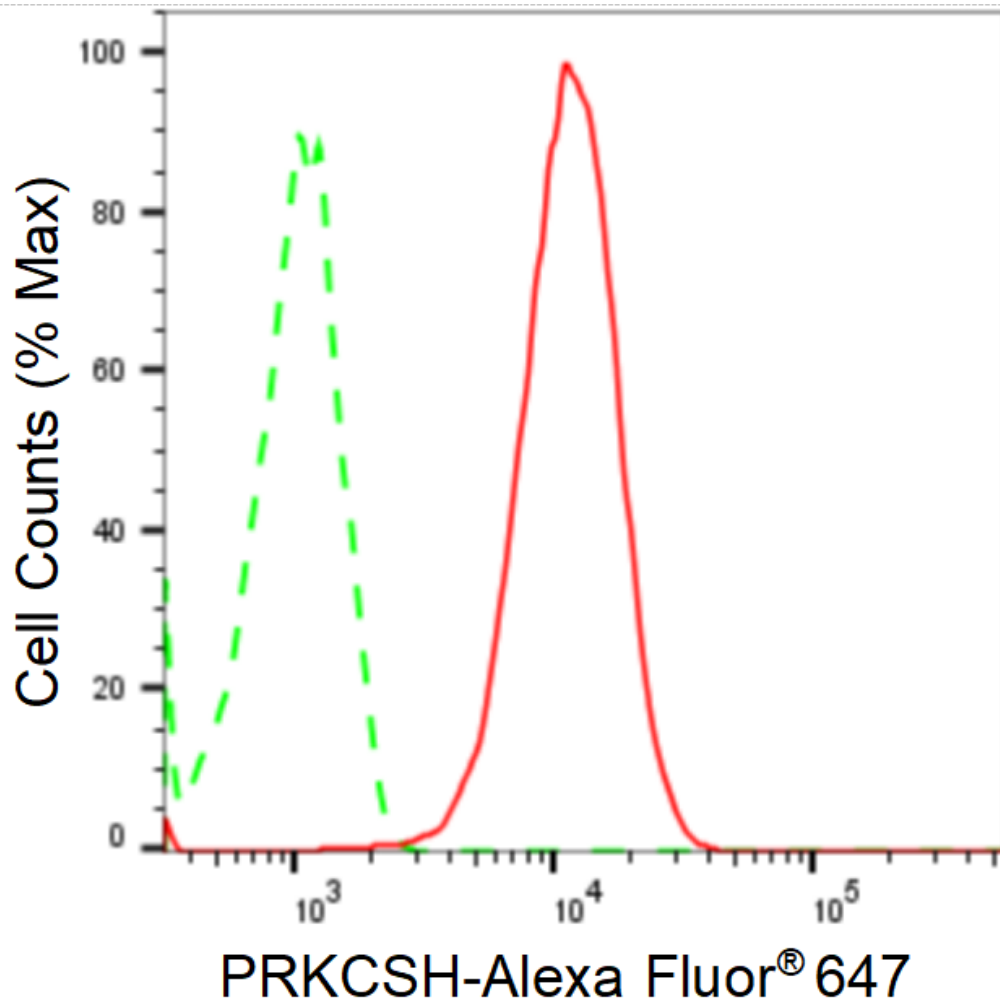
Store at -20 °C for one year.

**Recommended Dilutions**

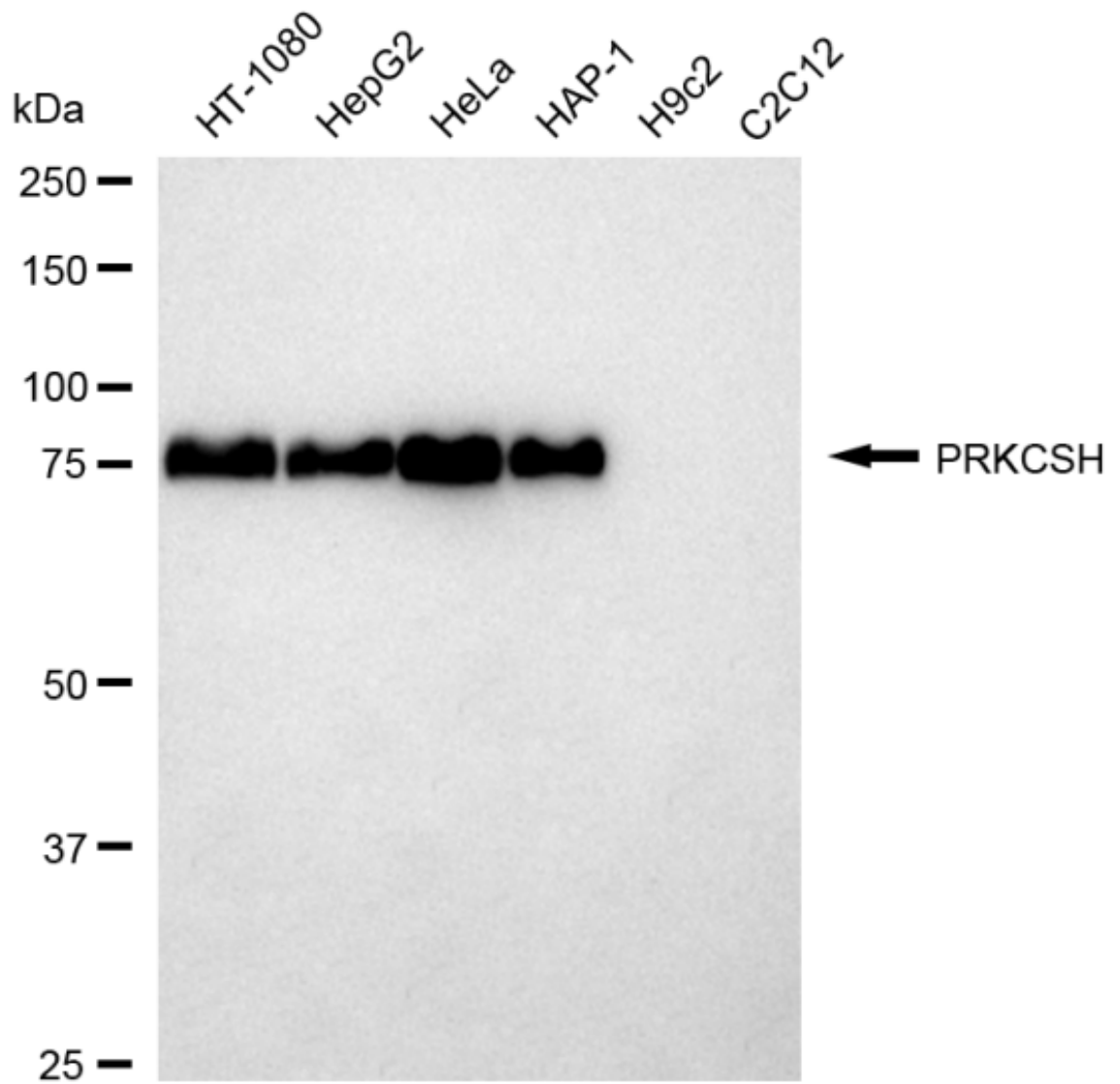
Western Blotting (WB): 1:1,000-1:5,000 Flow Cytometry (FCM): 1:2,000

**Protocols**

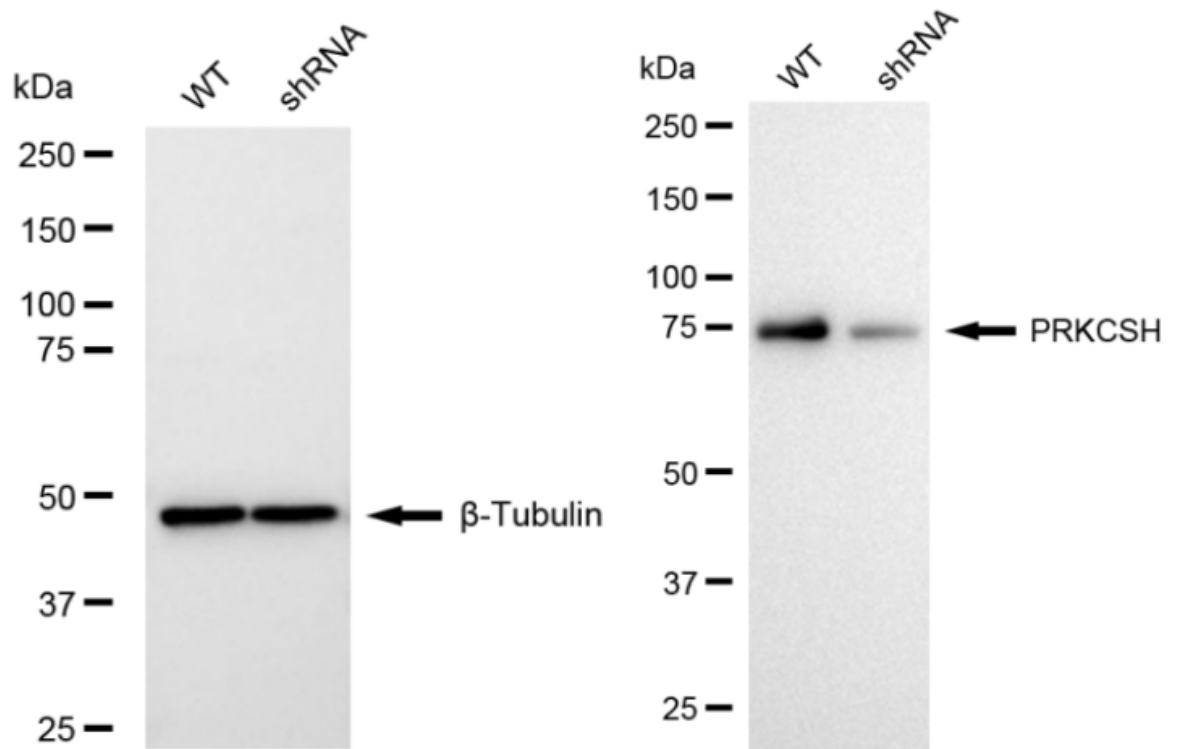
For general and specific antibody protocols please visit our website. Read all instructions before using this product.



Flow cytometric analysis of PRKCSH expression in HeLa cells using anti-PRKCSH antibody 1:2,000. Green, isotype control; red, PRKCSH.



Western blotting analysis using anti-PRKCSH antibody 1:5,000 and HRP-conjugated goat anti-rabbit secondary antibody 1:20,000 respectively. Image was developed using FeQ™ ECL Substrate Kit .



Western blotting analysis using anti-PRKCSH antibody 1:5,000 and HRP-conjugated goat anti-rabbit secondary antibody 1:20,000 respectively. Image was developed using NaQ™ ECL Substrate Kit .