



SunLong Biotech Co.,LTD
Tel: 0086-571- 56623320 Fax:0086-571- 56623318
E-mail:sales@sunlongbiotech.com
www.sunlongbiotech.com

[KD-Validated] Anti-Phospho-PKC gamma (Thr514) Rabbit Monoclonal Antibody

Cat No.: KD-10729

Aliases:

PRKCG; Protein Kinase C Gamma; PKC-Gamma; PKCC; PKCG; Protein Kinase C Gamma Type; EC 2.7.11.13; MGC57564;SCA14; Protein Kinase C, Gamma; EC 2.7.11; PKCgamma; PKCI(3); PKC γ

Background:

UniProt Entry: [P05129](#);NCBI Gene Entry: [5582](#)

Application Information

Molecular Weight: Predicted, 78 kDa, observed, 75 kDa Clonality: Rabbit monoclonal antibody Clone ID: 24GB4490 Species Reactivity: Human, Mouse, Rat Applications Tested: Western Blotting (WB), Flow Cytometry (FCM)

Immunogen

A synthesized peptide derived from human Phospho-PKC gamma (Thr514)

Isotype

Rabbit IgG

Storage Buffer

Supplied in PBS (pH 7.4) containing 50% glycerol, and 0.02% sodium azide.

Storage

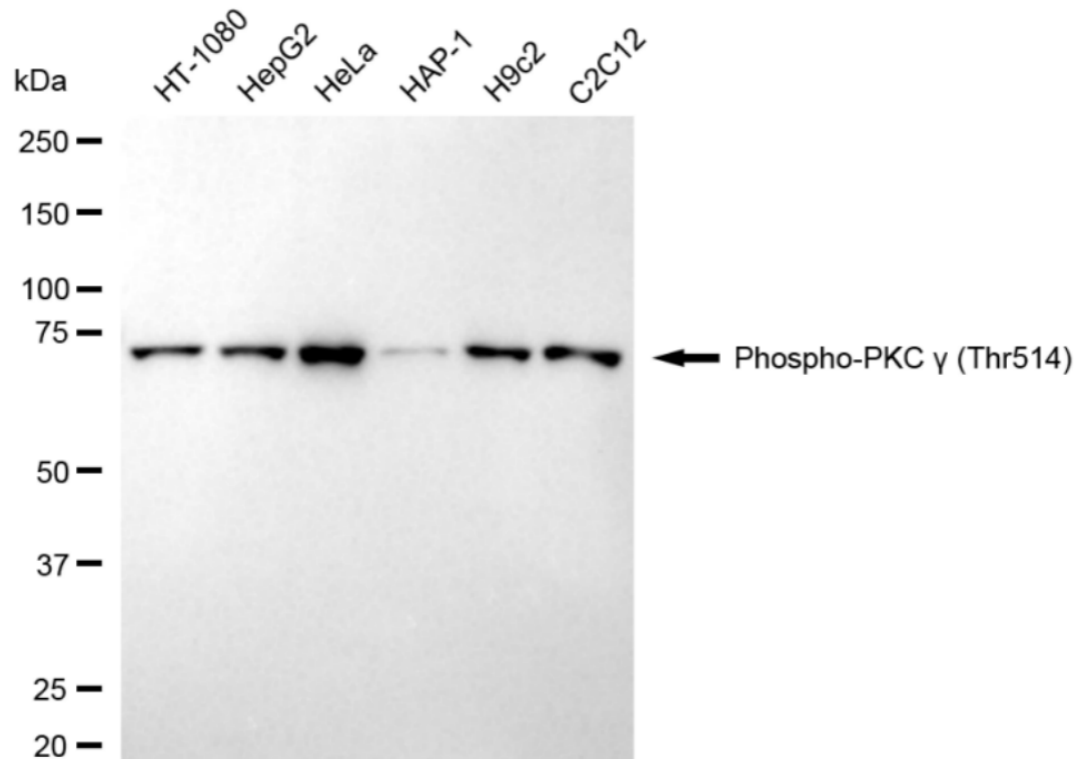
Store at -20 °C for one year.

Recommended Dilutions

Western Blotting (WB): 1:1,000-1:5,000 Flow Cytometry (FCM): 1:2,000

Protocols

For general and specific antibody protocols please visit our website. Read all instructions before using this product.



Western blotting analysis using anti-phospho-PKC gamma (Thr514) antibody 1:5,000 and HRP-conjugated goat anti-rabbit secondary antibody 1:20,000 respectively. Image was developed using NaQ™ ECL Substrate Kit 1:5,000 and HRP-conjugated goat anti-rabbit secondary antibody 1:20,000 respectively. Image was developed using NaQ™ ECL Substrate Kit 1:2,000. Green, isotype control; red, Phospho-PKC gamma (Thr514).