



SunLong Biotech Co.,LTD  
Tel: 0086-571- 56623320 Fax:0086-571- 56623318  
E-mail:sales@sunlongbiotech.com  
www.sunlongbiotech.com

## **[KD-Validated] Anti-PKC delta + PKC theta Rabbit Monoclonal Antibody**

Cat No.: KD-10728

### **Aliases:**

PRKCD; Protein Kinase C Delta; Tyrosine-Protein Kinase PRKCD; Protein Kinase C Delta Type; EC 2.7.11.13; NPKC-Delta; PKCD; Protein Kinase C Delta VIII; Protein Kinase C, Delta; EC 2.7.10.2; EC 2.7.11; ALPS3; CVID9; MAY1; PRKCQ; Protein Kinase C Theta; Protein Kinase C Theta Type; EC 2.7.11.13; NPKC-Theta; PRKCT; Protein Kinase C, Theta; EC 2.7.11

### **Background:**

UniProt Entry: [Q05655/ Q04759](#);NCBI Gene Entry: [5580/5588](#)

### **Application Information**

Molecular Weight: Predicted, 78,82 kDa; observed, 73 kDa Clonality: Rabbit monoclonal antibody Clone ID: 23GB4585 Species Reactivity: Human, Mouse, Rat Applications Tested: Western Blotting (WB), Flow Cytometry (FCM), Immunocytochemistry (IC)

### **Immunogen**

A synthesized peptide derived from human PKC delta + PKC theta

### **Isotype**

Rabbit IgG

### **Storage Buffer**

Supplied in PBS (pH 7.4) containing 50% glycerol, and 0.02% sodium azide.

#### Storage

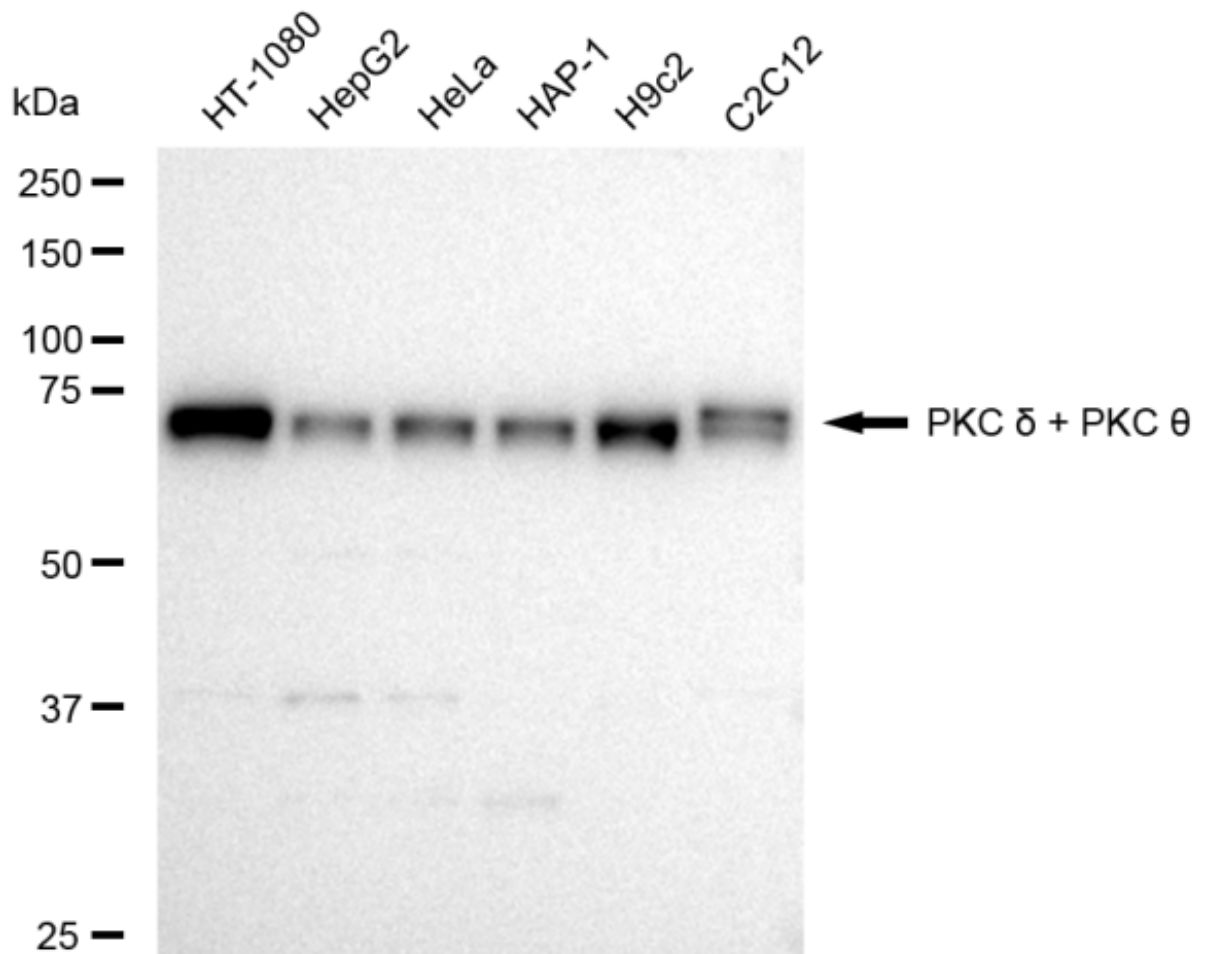
Store at -20 °C for one year.

#### Recommended Dilutions

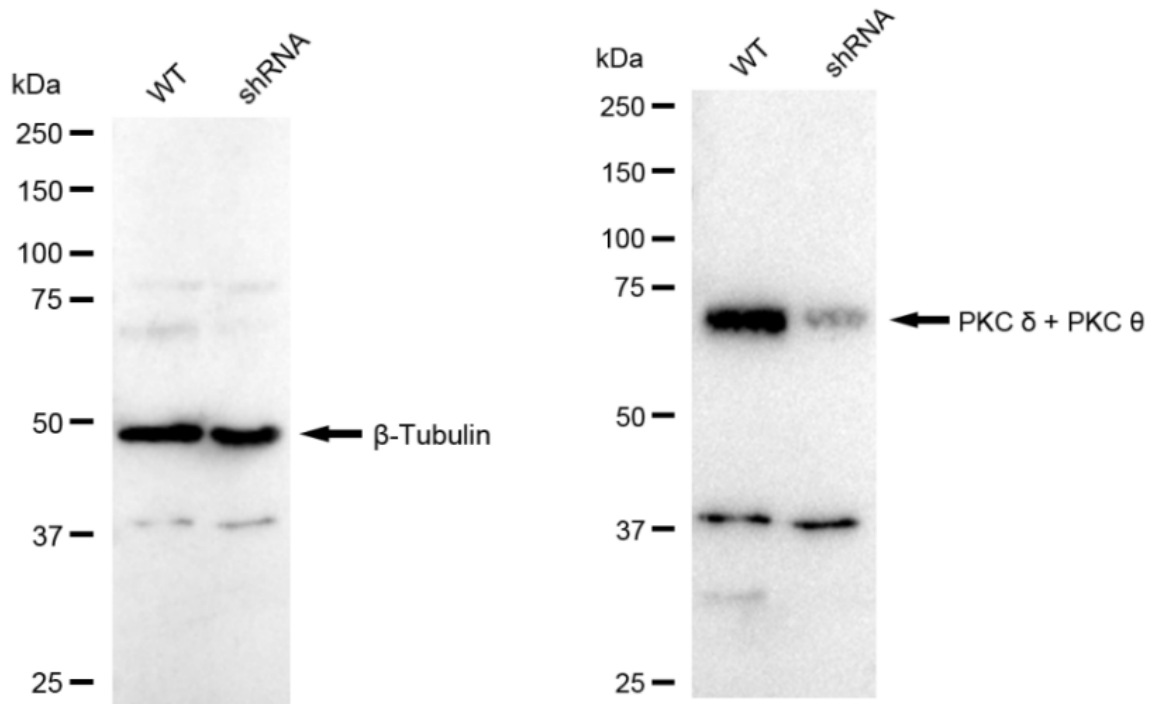
Western Blotting (WB): 1:1,000-1:5,000 Flow cytometry (FCM): 1:2,000  
Immunocytochemistry (IC): 1:1,000

#### Protocols

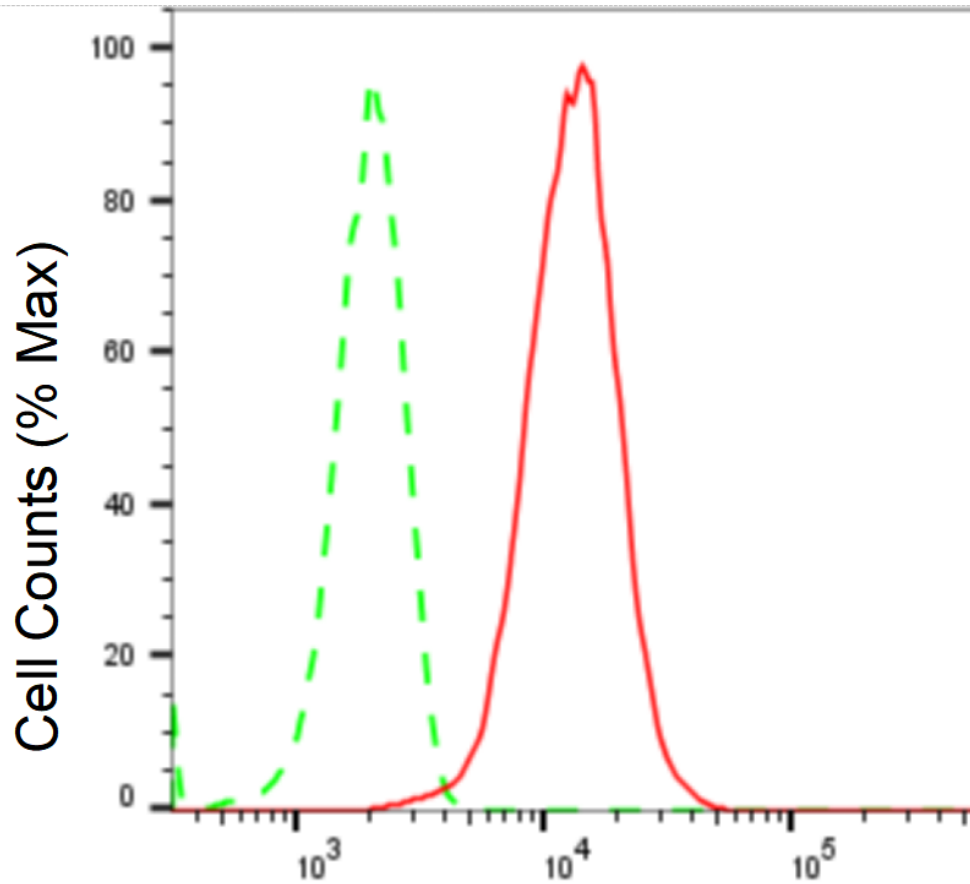
For general and specific antibody protocols please visit our website. Read all instructions before using this product.



Western blotting analysis using anti-PKC delta + PKC theta antibody 1:5,000 and HRP-conjugated goat anti-rabbit secondary antibody 1:20,000 respectively. Image was developed using FeQTM ECL Substrate Kit .

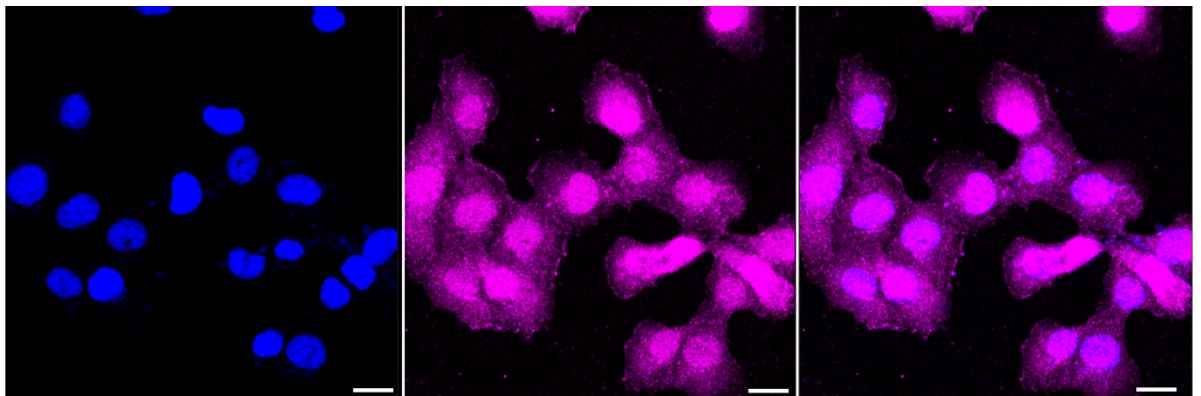


Western blotting analysis using anti-PKC delta + PKC theta antibody 1:5,000 and HRP-conjugated goat anti-rabbit secondary antibody 1:20,000 respectively. Image was developed using FeQTM ECL Substrate Kit .



### PKC delta + PKC theta-Alexa Fluor® 647

Flow cytometric analysis of PKC delta + PKC theta expression in HT-1080 cells using PKC delta + PKC theta antibody 1:2,000. Green, isotype control; red, PKC delta + PKC theta.



Immunocytochemical staining of HT-1080 cells with PKC delta + PKC theta antibody 1:1,000. Nuclei were stained blue with DAPI; PKC delta + PKC theta was stained magenta with Alexa Fluor® 647. Images were taken using Leica stellaris 5. Protein abundance based on laser Intensity and smart gain: Medium. Scale bar: 20  $\mu$ m.