



SunLong Biotech Co.,LTD  
Tel: 0086-571- 56623320 Fax:0086-571- 56623318  
E-mail:sales@sunlongbiotech.com  
www.sunlongbiotech.com

## [KD-Validated] Anti-PKC delta Rabbit Monoclonal Antibody

Cat No.: KD-10726

### Aliases:

PRKCD; Protein Kinase C Delta; Tyrosine-Protein Kinase PRKCD; Protein Kinase C Delta Type; EC 2.7.11.13; NPKC-Delta; PKCD; Protein Kinase C Delta VIII; Protein Kinase C, Delta; EC 2.7.10.2; EC 2.7.11; ALPS3; CVID9; MAY1

### Background:

UniProt Entry: [Q05655](#);NCBI Gene Entry: [5580](#)

### Application Information

Molecular Weight: Predicted, 78 kDa, observed, 78 kDa Clonality: Rabbit monoclonal antibody Clone ID: 23GB2410 Species Reaceivity: Human, Mouse Applicseions Tsted: Western Blotting (WB), Flow Cytometry (FCM)

### Immunogen

A synthesized peptide derived from human PKC delta

### Isotype

Rabbit IgG

### Storage Buffer

Supplied in PBS (pH 7.4) containing 50% glycerol, and 0.02% sodium azide.

### Storage

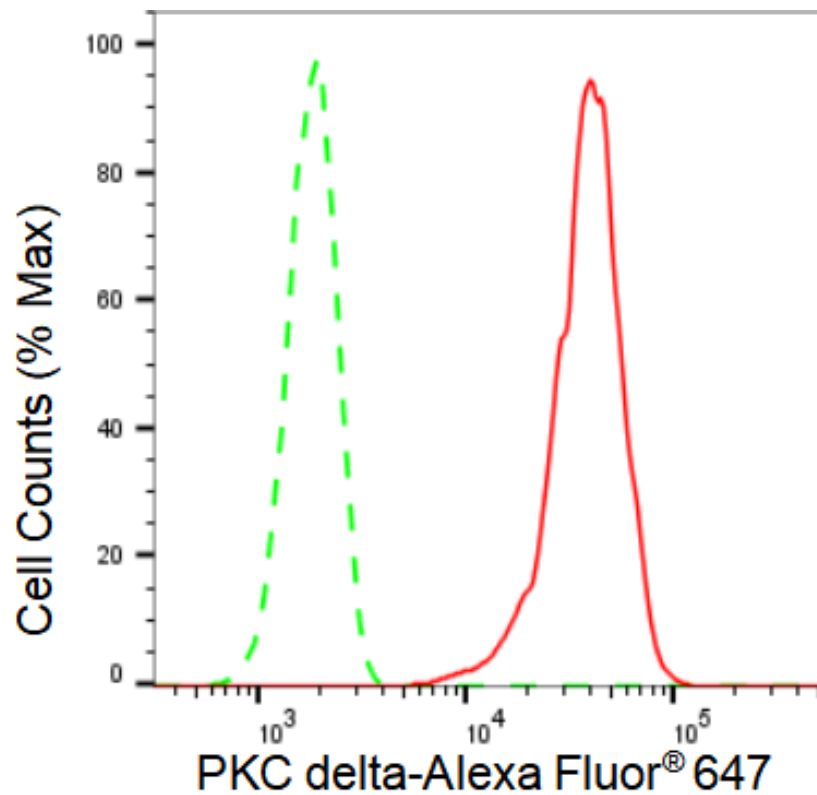
Store at -20 °C for one year.

### Recommended Dilutions

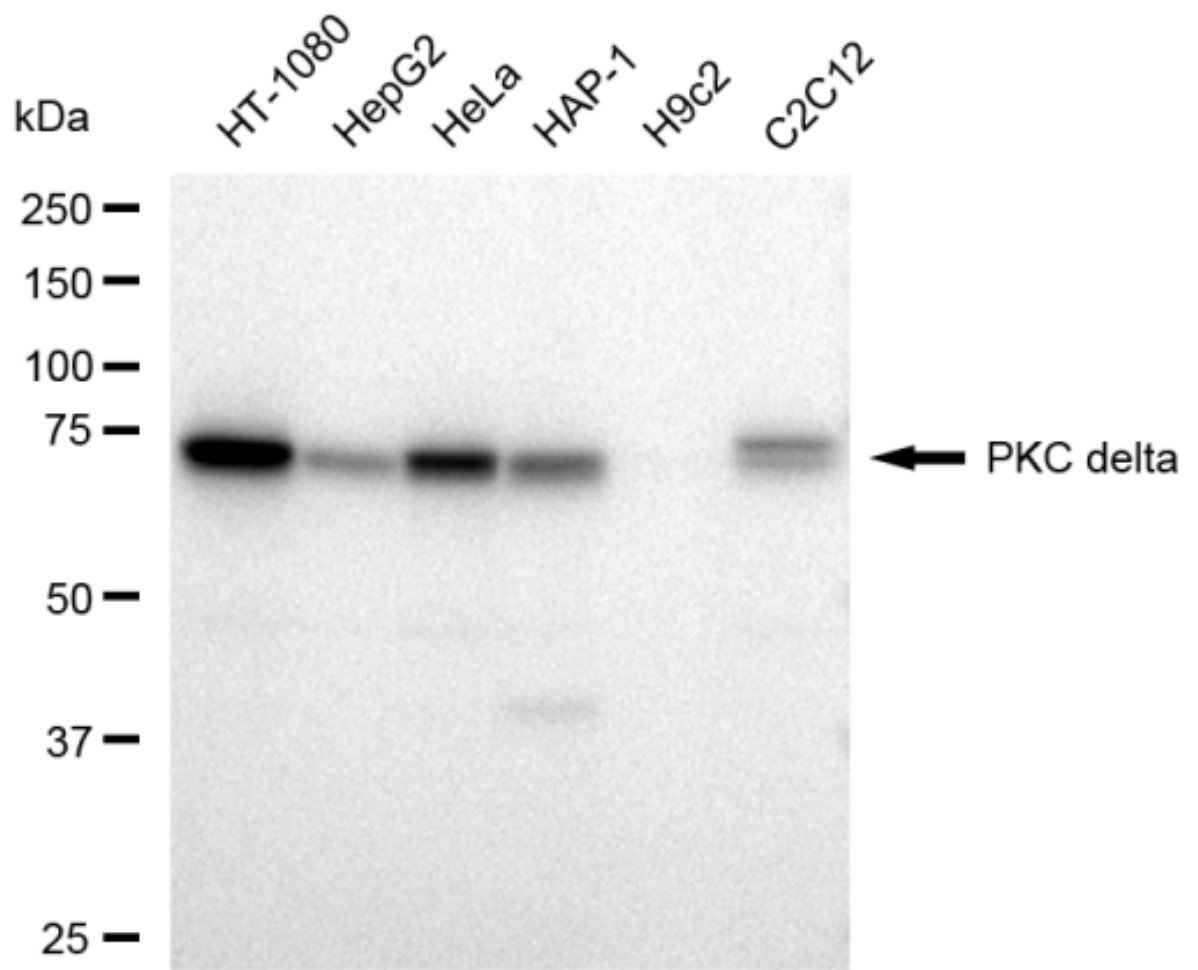
Western Blotting (WB): 1:1,000-1:5,000 Flow Cytometry (FCM): 1:2,000

### Protocols

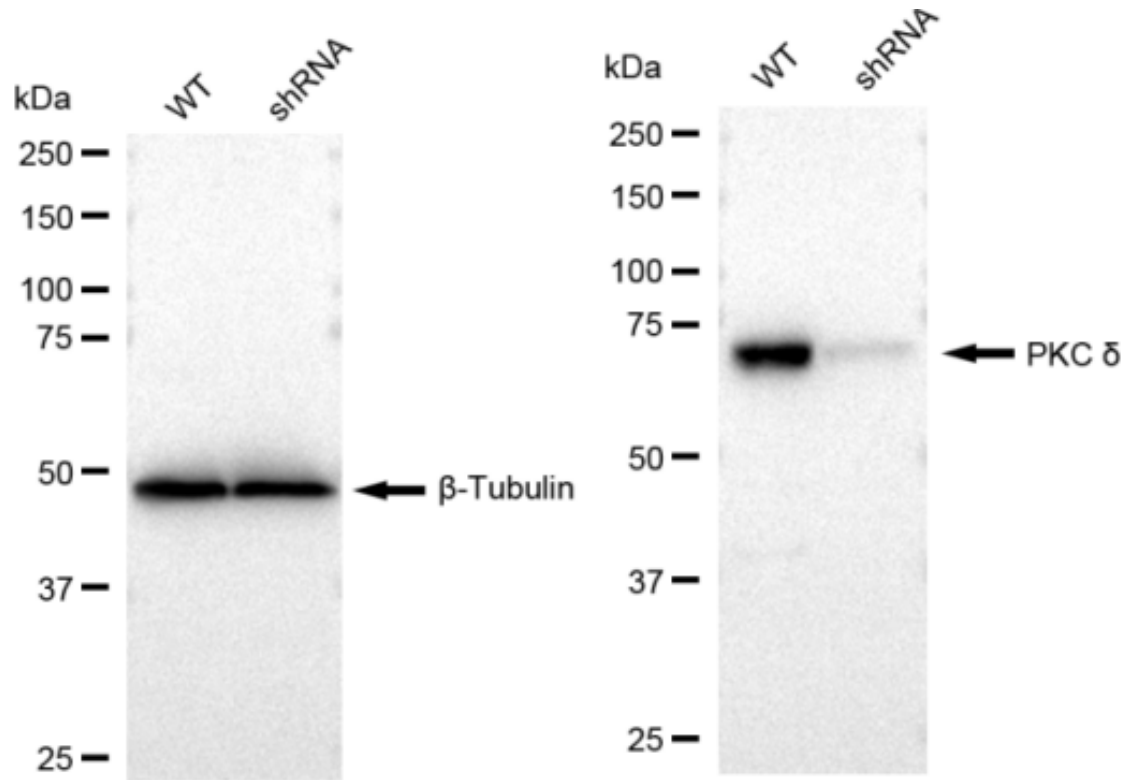
For general and specific antibody protocols please visit our website. Read all instructions before using this product.



Flow cytometric analysis of PKC delta expression in HT-1080 cells using PKC delta antibody 1:2,000. Green, isotype control; red, PKC delta.



Western blotting analysis using anti-PKC delta antibody 1:5,000 and HRP-conjugated goat anti-rabbit secondary antibody 1:20,000 respectively. Image was developed using FeQ™ ECL Substrate Kit .



Western blotting analysis using anti-PKC delta antibody 1:5,000 and HRP-conjugated goat anti-rabbit secondary antibody 1:20,000 respectively. Image was developed using FeQ™ ECL Substrate Kit .