



SunLong Biotech Co.,LTD  
Tel: 0086-571- 56623320 Fax:0086-571- 56623318  
E-mail:sales@sunlongbiotech.com  
www.sunlongbiotech.com

## **[KD-Validated] Anti-Phospho-PKC alpha (T497) Rabbit Monoclonal Antibody**

Cat No.: KD-10722

### **Aliases:**

PRKCA; Protein Kinase C Alpha; PKCA; Protein Kinase C Alpha Type; EC 2.7.11.13;  
PKC-Alpha; PRKACA; PKC-A; Protein Kinase C, Alpha; Aging-Associated Gene 6; EC  
2.7.11; PKCalpha; PKCI+/-; PKC $\alpha$ ; AAG6

### **Background:**

UniProt Entry: [P17252](#);NCBI Gene Entry: [5578](#)

### **Application Information**

Molecular Weight: Predicted, 77 kDa, observed, 73 kDa Clonality: Rabbit monoclonal  
antibody Clone ID: 23GB4955 Species Reactivity: Human, Mouse, Rat Applications  
Tested: Western Blotting (WB), Flow Cytometry (FCM)

### **Immunogen**

A synthesized peptide derived from human Phospho-PKC alpha (T497)

### **Isotype**

Rabbit IgG

### **Storage Buffer**

Supplied in PBS (pH 7.4) containing 50% glycerol, and 0.02% sodium azide.

### Storage

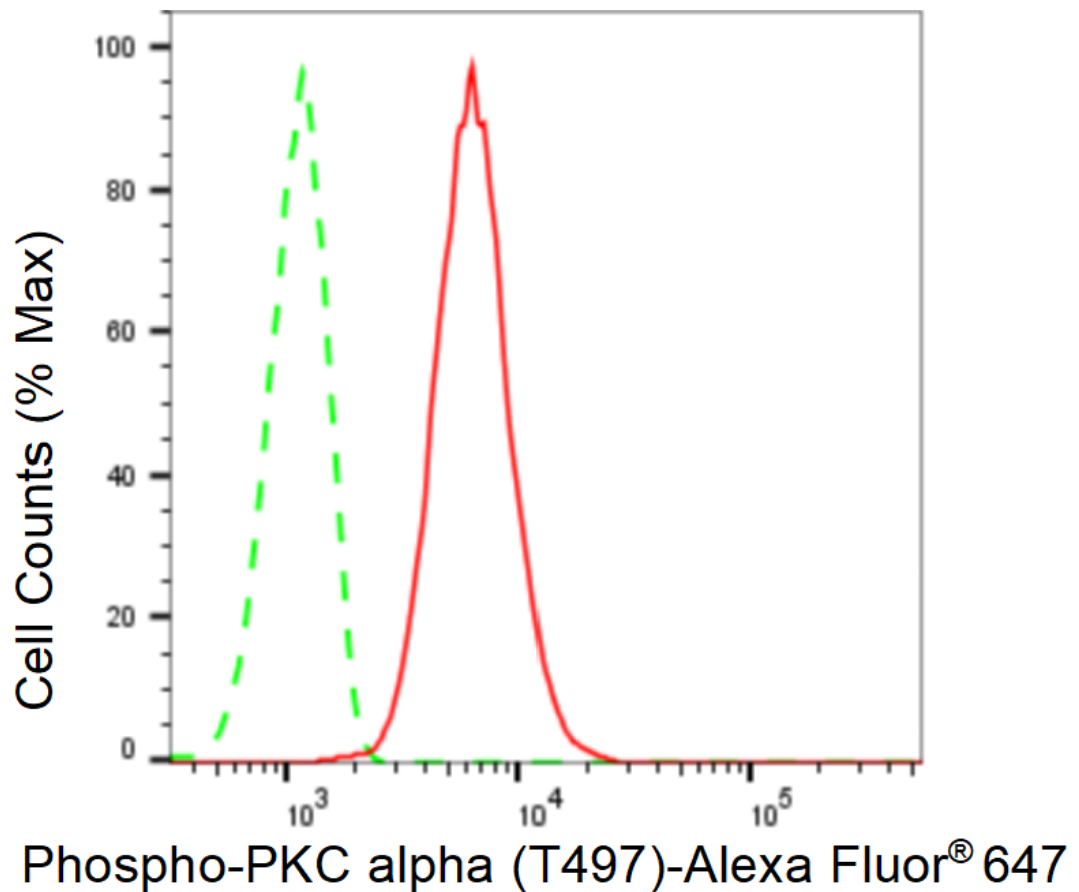
Store at -20 °C for one year.

### Recommended Dilutions

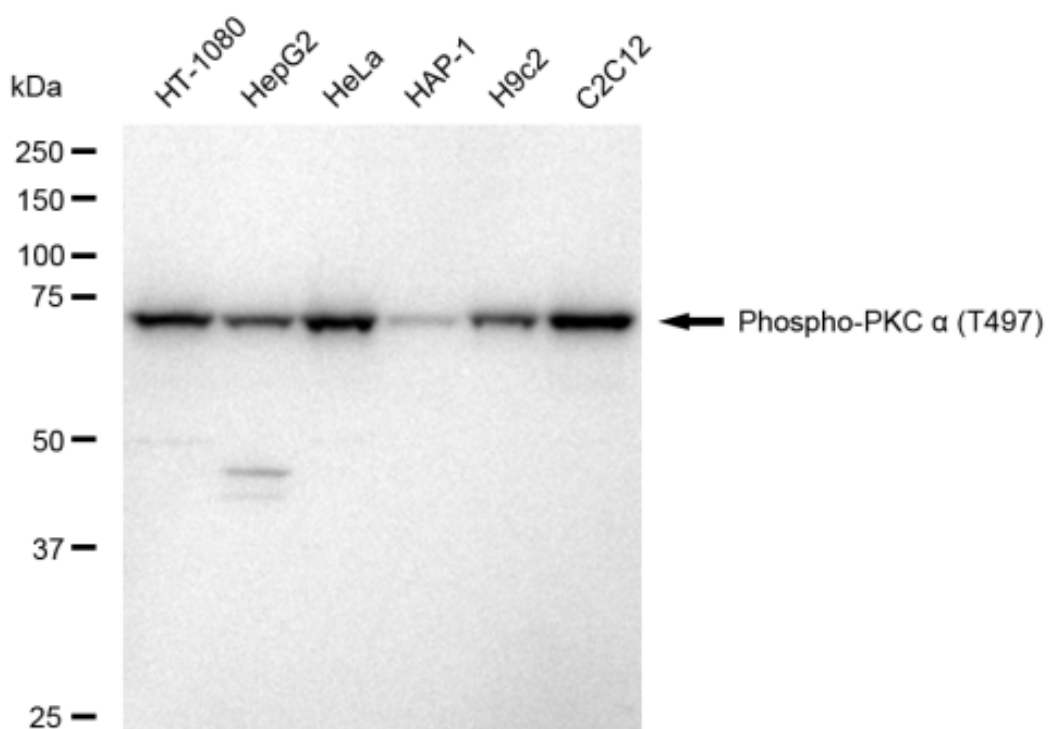
Western Blotting (WB): 1:1,000-1:5,000 Flow Cytometry (FCM): 1:2,000

### Protocols

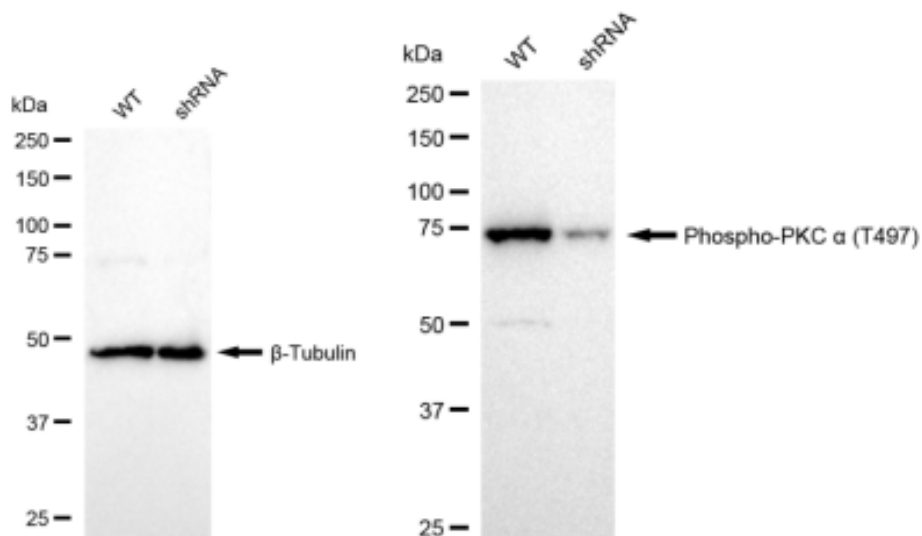
For general and specific antibody protocols please visit our website. Read all instructions before using this product.



Flow cytometric analysis of Phospho-PKC alpha (T497) expression in C2C12 cells using Phospho-PKC alpha (T497) antibody 1:2,000. Green, isotype control; red, Phospho-PKC alpha (T497).



Western blotting analysis using anti-Phospho-PKC alpha (T497) antibody 1:5,000 and HRP-conjugated goat anti-rabbit secondary antibody 1:20,000 respectively. Image was developed using FeQ™ ECL Substrate Kit .



Western blotting analysis using anti-Phospho-PKC alpha (T497) antibody 1:5,000 and HRP-conjugated goat anti-rabbit secondary antibody 1:20,000 respectively. Image was developed using FeQ™ ECL Substrate Kit .