



SunLong Biotech Co.,LTD
Tel: 0086-571- 56623320 Fax:0086-571- 56623318
E-mail:sales@sunlongbiotech.com
www.sunlongbiotech.com

[KD-Validated] Anti-PRKAR2A Rabbit Monoclonal Antibody

Cat No.: KD-10719

Aliases:

Protein Kinase CAMP-Dependent Type II Regulatory Subunit Alpha; PRKAR2; Protein Kinase, CAMP-Dependent, Regulatory Subunit Type II Alpha; CAMP-Dependent Protein Kinase Type II-Alpha Regulatory Subunit; PKR2; Protein Kinase, CAMP-Dependent, Regulatory, Type II, Alpha; CAMP-Dependent Protein Kinase Regulatory Subunit RII Alpha; Protein Kinase A, RII-Alpha Subunit

Background:

UniProt Entry: [P13861](#);NCBI Gene Entry: [5576](#)

Application Information

Molecular Weight: Predicted, 46 kDa, observed, 52 kDa Clonality: Rabbit monoclonal antibody Clone ID: 24GB1265 Species Reactivity: Human Applications Used: Western Blotting (WB), Flow Cytometry (FCM)

Immunogen

A synthesized peptide derived from human PKA R2

Isotype

Rabbit IgG

Storage Buffer

Supplied in PBS (pH 7.4) containing 50% glycerol, and 0.02% sodium azide.

Storage

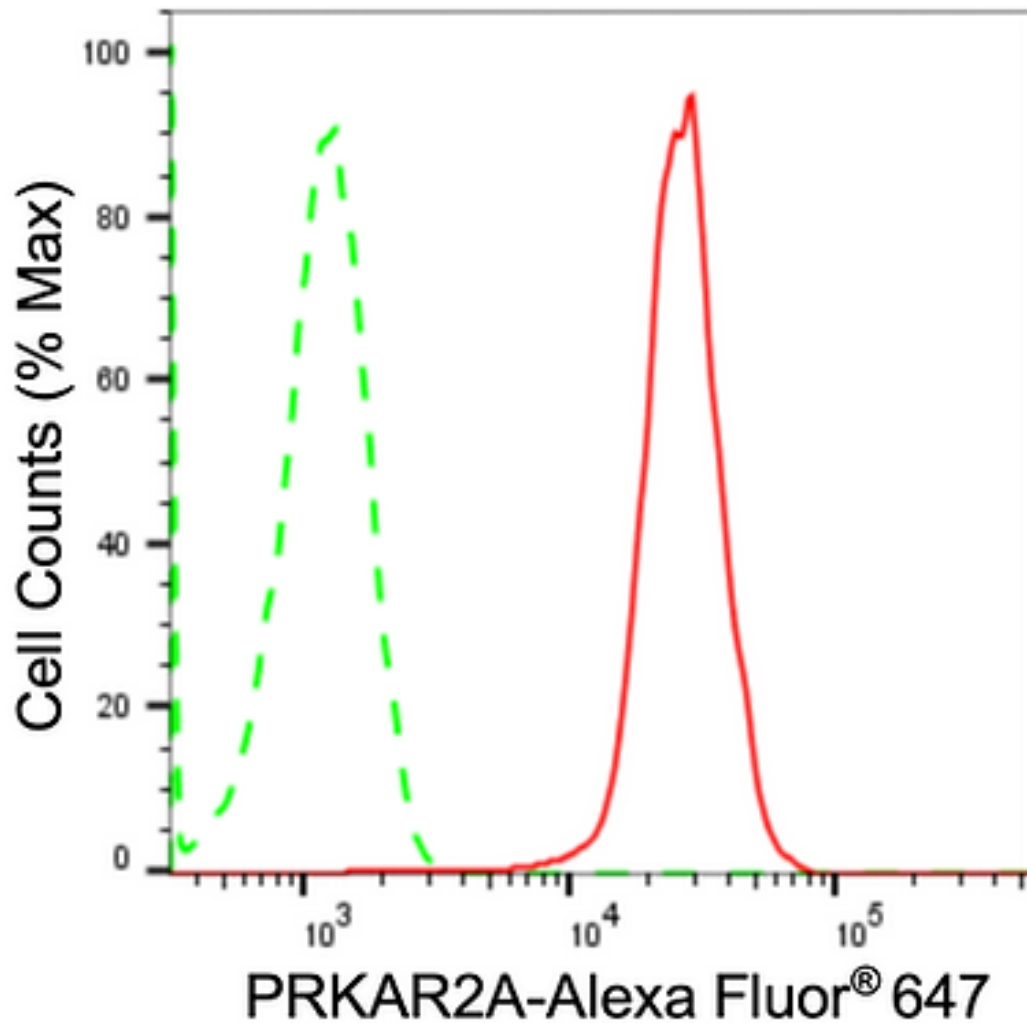
Store at -20 °C for one year.

Recommended Dilutions

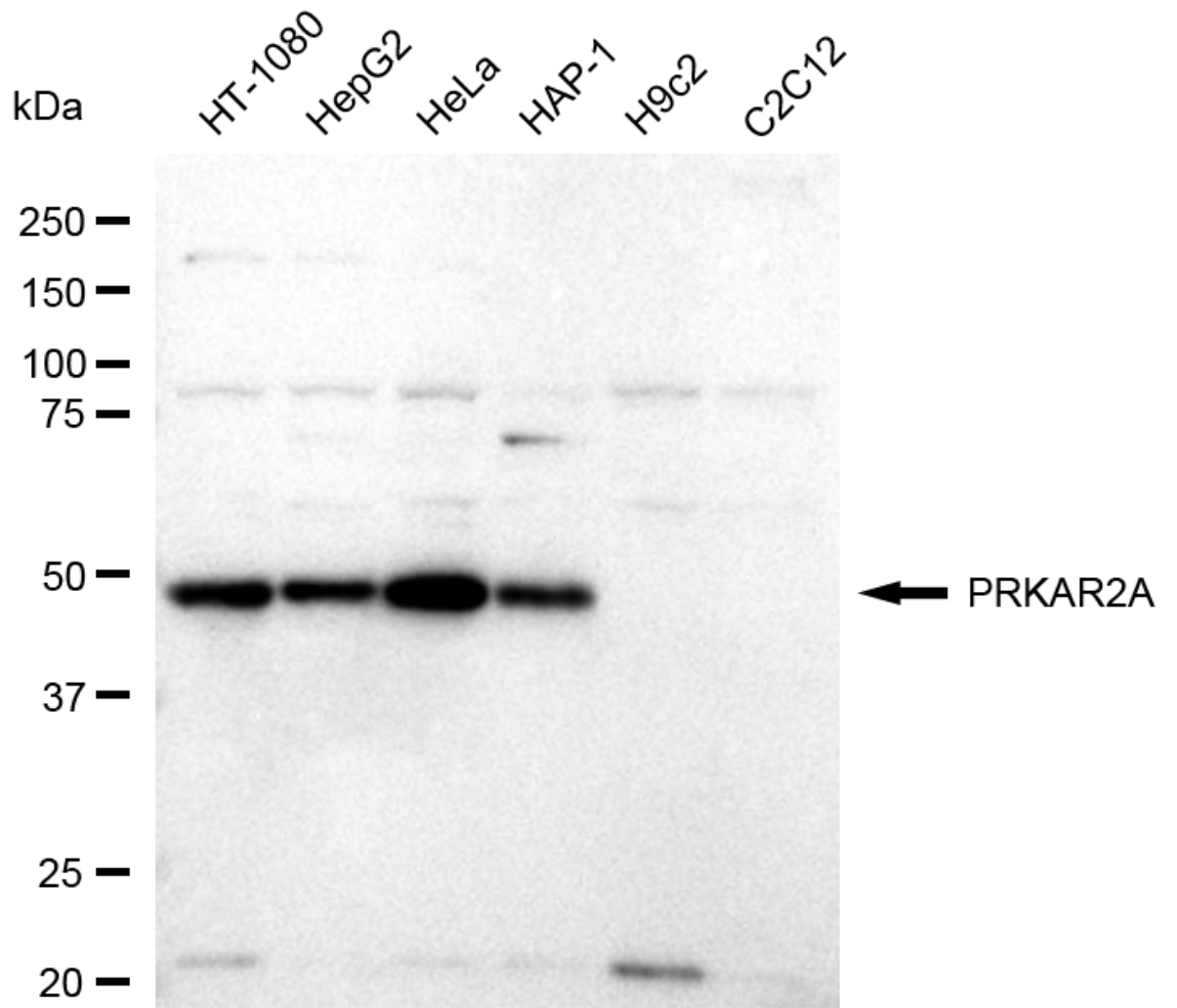
Western Blotting (WB): 1:1,000-1:5,000 Flow Cytometry (FCM): 1:2,000

Protocols

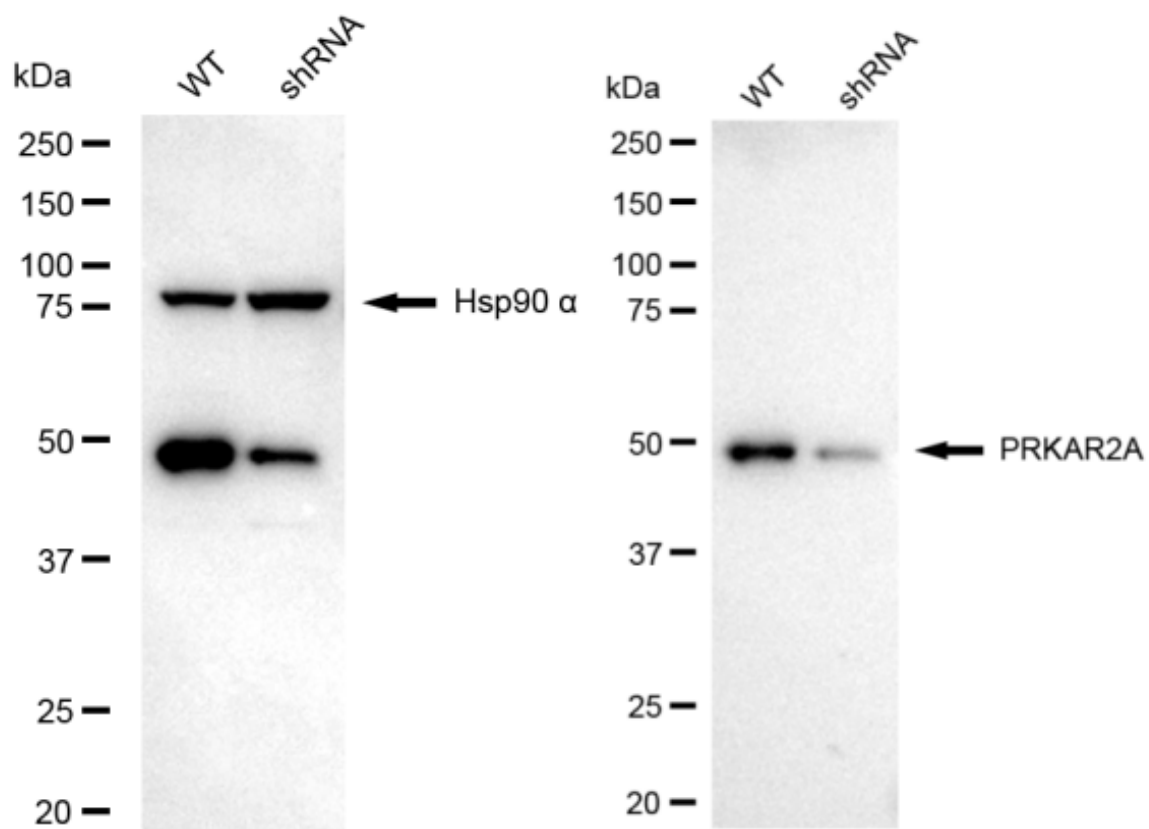
For general and specific antibody protocols please visit our website. Read all instructions before using this product.



Flow cytometric analysis of PRKAR2A expression in HAP-1 cells using anti-PRKAR2A antibody 1:2,000. Green, isotype control; red, PRKAR2A.



Western blotting analysis using anti-PRKAR2A antibody 1:5,000 and HRP-conjugated goat anti-rabbit secondary antibody 1:20,000 respectively. Image was developed using FeQ™ ECL Substrate Kit .



Western blotting analysis using anti-PRKAR2A antibody 1:5,000 and HRP-conjugated goat anti-rabbit secondary antibody 1:20,000 respectively. Image was developed using NaQ™ ECL Substrate Kit .