



SunLong Biotech Co.,LTD
Tel: 0086-571- 56623320 Fax:0086-571- 56623318
E-mail:sales@sunlongbiotech.com
www.sunlongbiotech.com

[KD-Validated] Anti-cAMP Protein Kinase Catalytic Subunit Rabbit Monoclonal Antibody

Cat No.: KD-10718

Aliases:

Protein Kinase; CAMP-Dependent; Catalytic; Alpha; CAMP-Dependent Protein Kinase Catalytic Subunit Alpha; PKACA; Protein Kinase A Catalytic Subunit; PKA C-Alpha; EC 2.7.11; EC 2.7.11.11

Background:

UniProt Entry: [P17612](#);NCBI Gene Entry: [5566](#)

Application Information

Molecular Weight: Predicted, 41 kDa, observed, 41 kDa Clonality: Rabbit monoclonal antibody Clone ID: 23GB1030 Species Reactivity: Human, Mouse, Rat Applications Tested: Western Blotting (WB), Flow Cytometry (FCM), Immunocytochemistry (IC)

Immunogen

A synthesized peptide derived from human cAMP Protein Kinase Catalytic subunit

Isotype

Rabbit IgG

Storage Buffer

Supplied in PBS (pH 7.4) containing 50% glycerol, and 0.02% sodium azide.

Storage

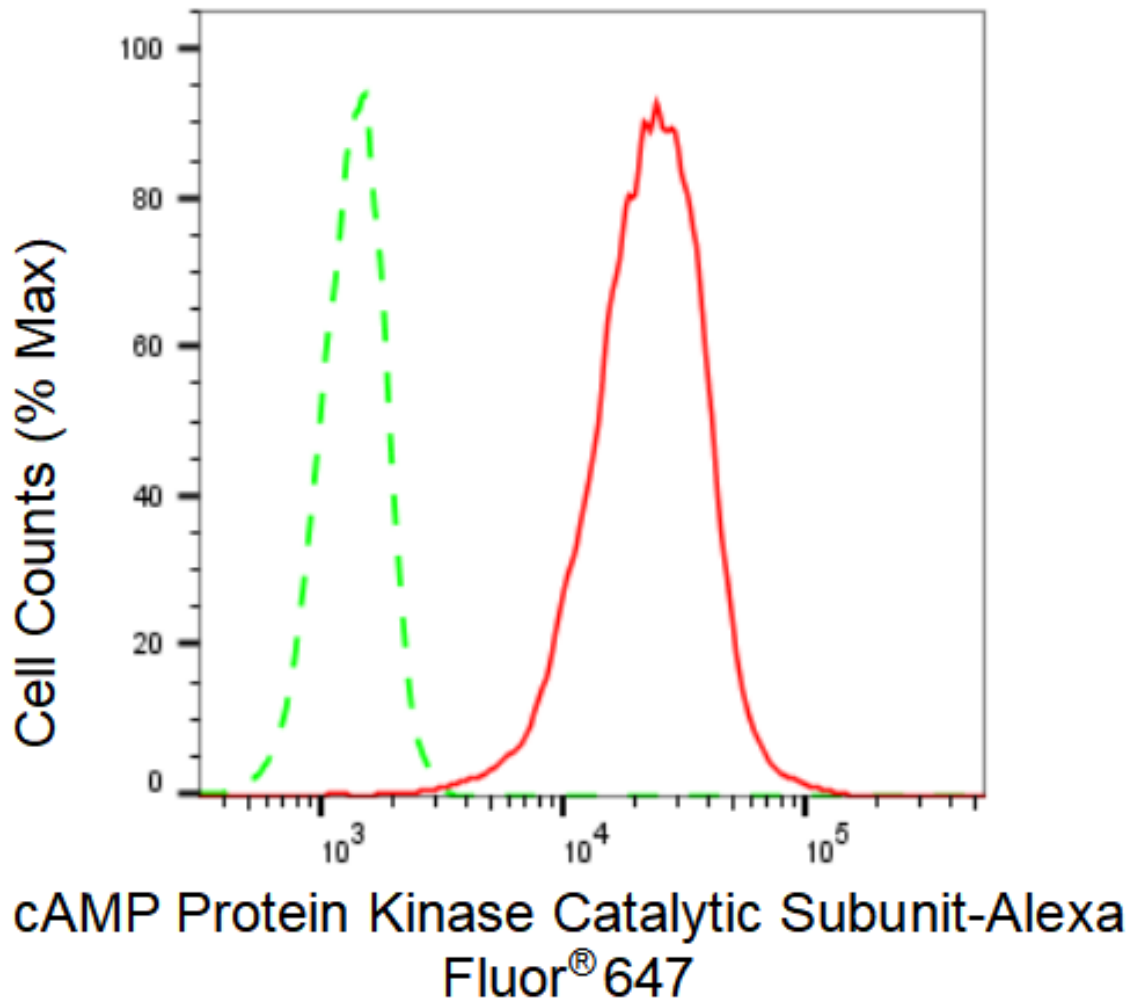
Store at -20 °C for one year.

Recommended Dilutions

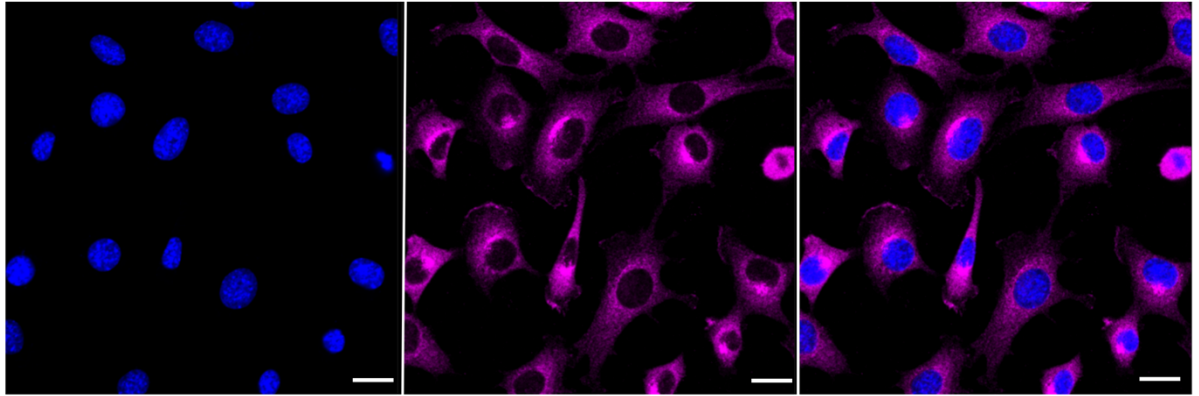
Western Blotting (WB): 1:1,000-1:5,000 Flow Cytometry (FCM): 1:2,000
Immunocytochemistry (IC): 1:1,000

Protocols

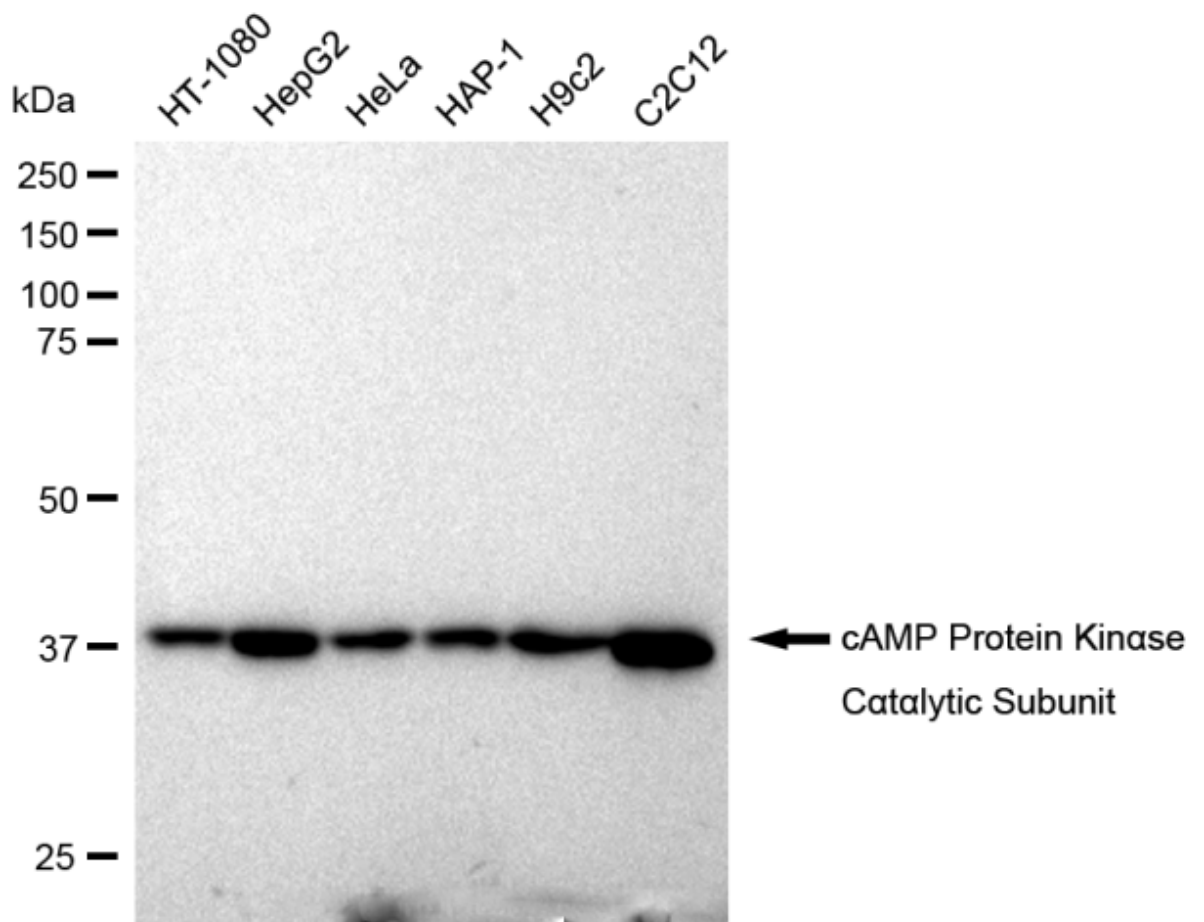
For general and specific antibody protocols please visit our website. Read all instructions before using this product.



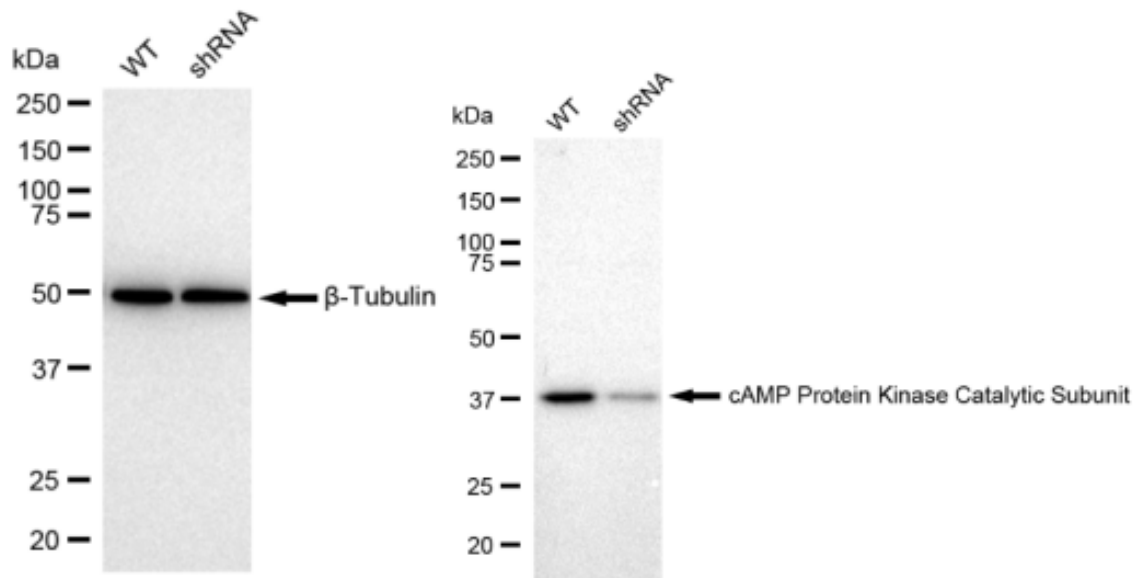
Flow cytometric analysis of cAMP Protein Kinase Catalytic Subunit expression in C2C12 cells using cAMP Protein Kinase Catalytic Subunit antibody 1:2,000. Green, isotype control; red, cAMP Protein Kinase Catalytic Subunit.



Immunocytochemical staining of HeLa cells with cAMP Protein Kinase Catalytic Subunit antibody 1:1,000. Nuclei were stained blue with DAPI; cAMP Protein Kinase Catalytic Subunit was stained magenta with Alexa Fluor® 647. Images were taken using Leica stellaris 5. Protein abundance based on laser Intensity and smart gain: High. Scale bar: 20 μ m.



Western blotting analysis using anti-cAMP Protein Kinase Catalytic Subunit antibody 1:5,000 and HRP-conjugated goat anti-rabbit secondary antibody 1:50,000 respectively. Image was developed using FeQ™ ECL Substrate Kit .



Western blotting analysis using anti-cAMP Protein Kinase Catalytic Subunit antibody 1:5,000 and HRP-conjugated goat anti-rabbit secondary antibody 1:20,000 respectively. Image was developed using FeQ™ ECL Substrate Kit .