



SunLong Biotech Co.,LTD
Tel: 0086-571- 56623320 Fax:0086-571- 56623318
E-mail:sales@sunlongbiotech.com
www.sunlongbiotech.com

[KD-Validated] Anti-Phospho-AMPK alpha 1 (S496) Rabbit Monoclonal Antibody

Cat No.: KD-10717

Aliases:

PRKAA1; Protein Kinase AMP-Activated Catalytic Subunit Alpha 1; 5'-AMP-Activated Protein Kinase Catalytic Subunit Alpha-1; Protein Kinase, AMP-Activated, Alpha 1 Catalytic Subunit; Hydroxymethylglutaryl-CoA Reductase Kinase; Acetyl-CoA Carboxylase Kinase; Tau-Protein Kinase PRKAA1; AMPK Subunit Alpha-1; AMPK, Alpha, 1; ACACA Kinase; HMGCR Kinase; EC 2.7.11.1; AMPKa1; 5'-AMP-Activated Protein Kinase, Catalytic Alpha-1 Chain; AMP-Activated Protein Kinase, Catalytic, Alpha-1; AMP -Activate Kinase Alpha 1 Subunit; AMPK Alpha 1; EC 2.7.11.27; EC 2.7.11.31; EC 2.7.11.26; EC 2.7.11; AMPKA1; AMPK1; AMPK

Background:

UniProt Entry: [Q13131](#);NCBI Gene Entry: [5562](#)

Application Information

Molecular Weight: Predicted, 64 kDa, observed, 64 kDa Clonality: Rabbit monoclonal antibody Clone ID: 23GB2660 Species Reactivity: Human Applications Used: Western Blotting (WB), Flow Cytometry (FCM), Immunocytochemistry (IC)

Immunogen

A synthesized peptide derived from human AMPK alpha 1

Isotype

Rabbit IgG

Storage Buffer

Supplied in PBS (pH 7.4) containing 50% glycerol, and 0.02% sodium azide.

Storage

Store at -20 °C for one year.

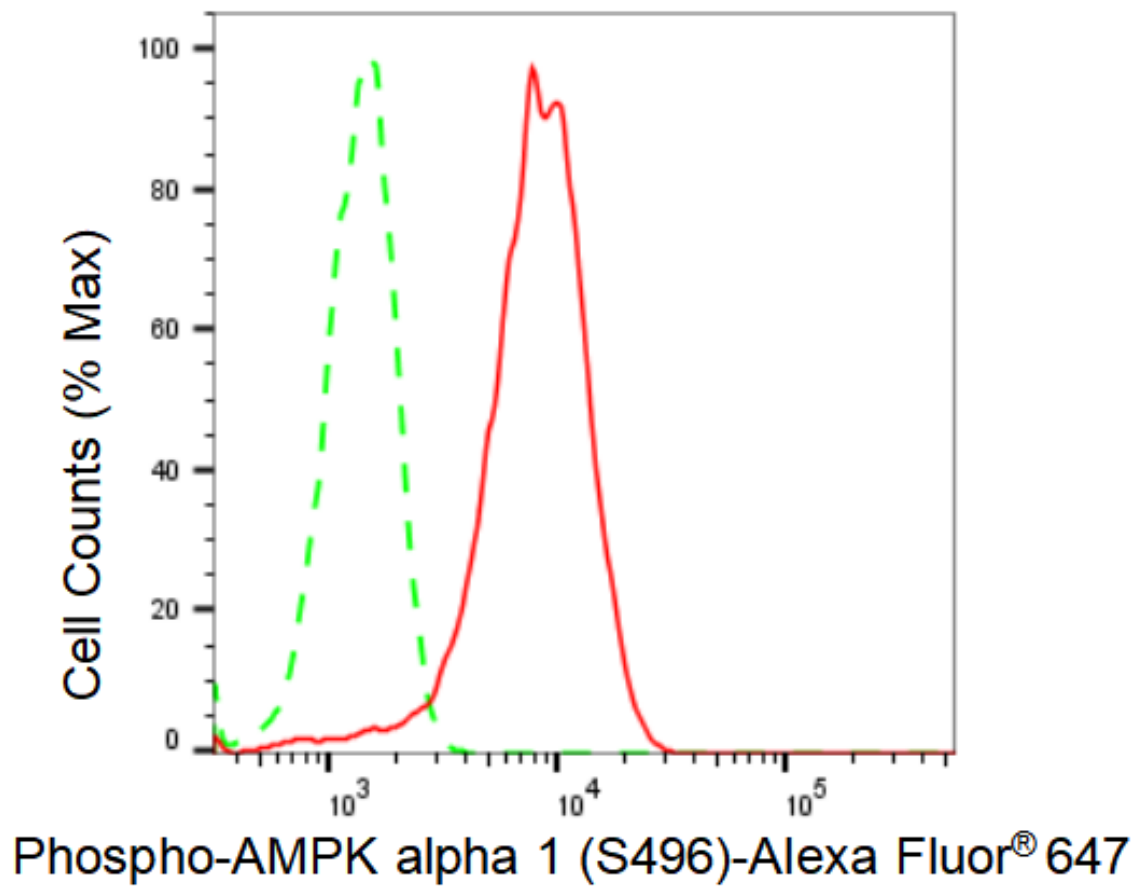
Recommended Dilutions

Western Blotting (WB): 1:1,000-1:5,000 Flow Cytometry (FCM): 1:2,000

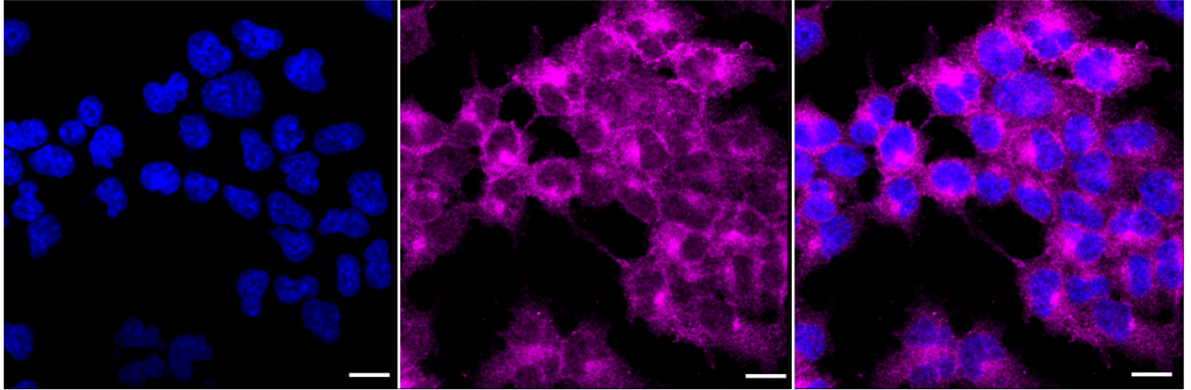
Immunocytochemistry (IC): 1:1,000

Protocols

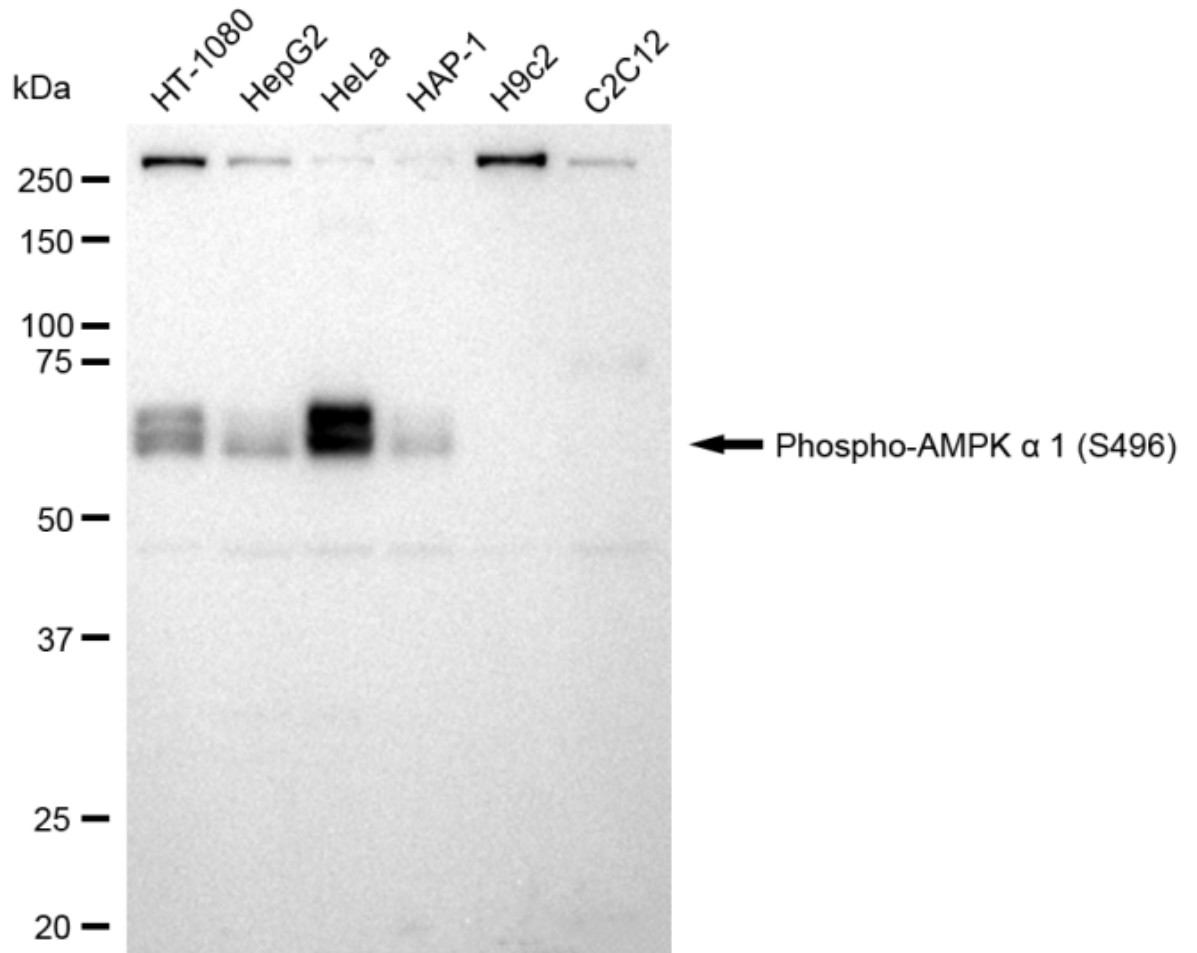
For general and specific antibody protocols please visit our website. Read all instructions before using this product.



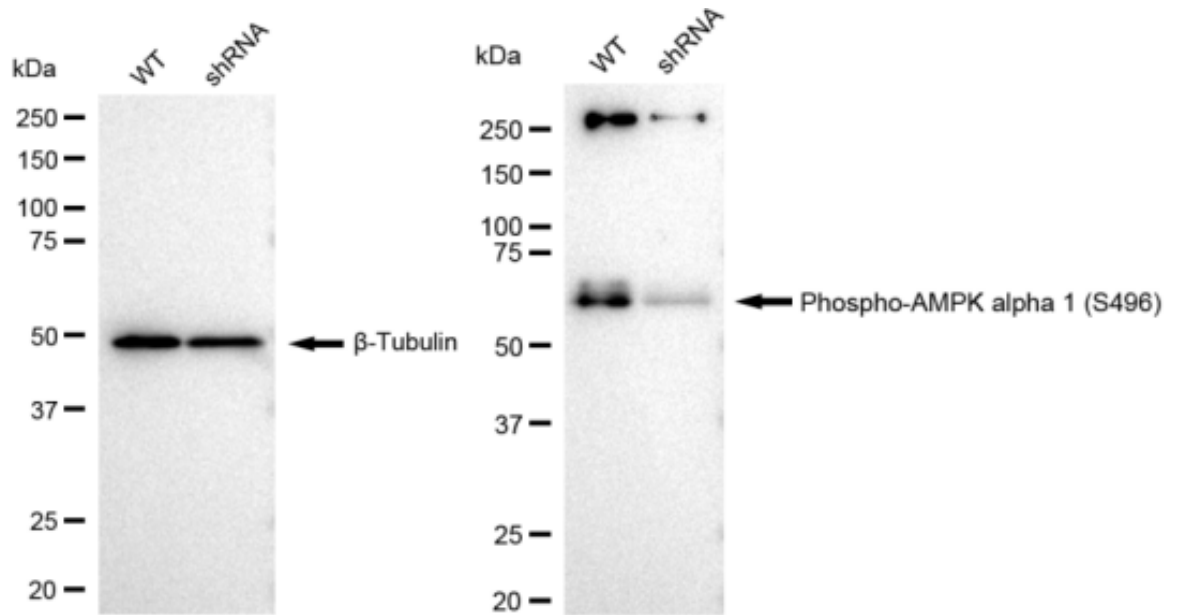
Flow cytometric analysis of Phospho-AMPK alpha 1 (S496) expression in HeLa cells using Phospho-AMPK alpha 1 (S496) antibody 1:2,000. Green, isotype control; red, Phospho-AMPK alpha 1 (S496).



Immunocytochemical staining of HeLa cells with Phospho-AMPK alpha 1 (S496) antibody 1:1,000. Nuclei were stained blue with DAPI; Phospho-AMPK alpha 1 (S496) was stained magenta with Alexa Fluor® 647. Images were taken using Leica stellaris 5. Protein abundance based on laser Intensity and smart gain: Medium. Scale bar: 20 μ m.



Western blotting analysis using anti-Phospho-AMPK alpha 1 (S496) antibody 1:5,000 and HRP-conjugated goat anti-rabbit secondary antibody 1:20,000 respectively. Image was developed using FeQ™ ECL Substrate Kit .



Western blotting analysis using anti-Phospho-AMPK alpha 1 (S496) antibody 1:5000 and HRP-conjugated goat anti-rabbit secondary antibody 1:20000 respectively. Image was developed using FeQ™ ECL Substrate Kit .