



SunLong Biotech Co.,LTD
Tel: 0086-571- 56623320 Fax:0086-571- 56623318
E-mail:sales@sunlongbiotech.com
www.sunlongbiotech.com

[KD-Validated] Anti-Prolyl Endopeptidase Like Rabbit Monoclonal Antibody

Cat No.: KD-10714

Aliases:

Prolyl Endopeptidase Like; Prolyl Endopeptidase-Like; KIAA0436; Putative Prolyl Oligopeptidase; Prolylendopeptidase-Like; EC 3.4.21.83; EC 3.4.21.-; EC 3.4.21; CMS22

Background:

UniProt Entry: [Q4J6C6](#);NCBI Gene Entry: [9581](#)

Application Information

Molecular Weight: Predicted, 84 kDa, observed, 70 kDa Clonality: Rabbit monoclonal antibody Clone ID: 24GB990 Species Reactivity: Human, Mouse, Rat Applications Tested: Western Blotting (WB), Flow Cytometry (FCM), Immunocytochemistry (IC)

Immunogen

A synthesized peptide derived from human PREPL

Isotype

Rabbit IgG

Storage Buffer

Supplied in PBS (pH 7.4) containing 50% glycerol, and 0.02% sodium azide.

Storage

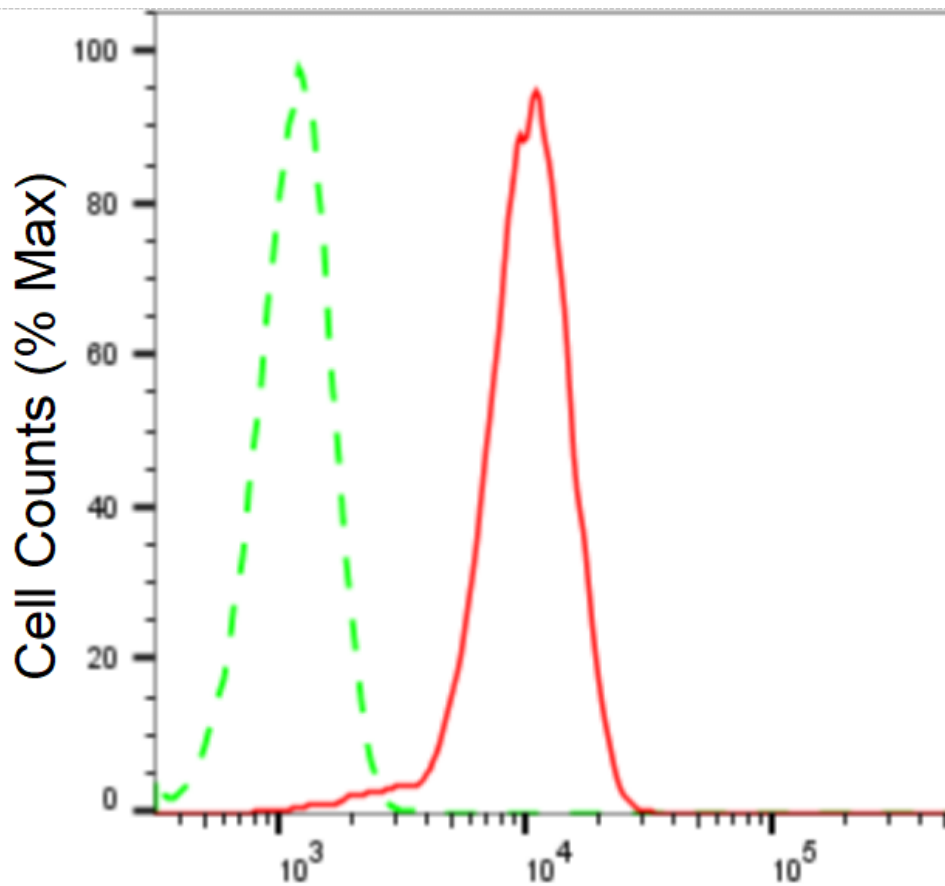
Store at -20 °C for one year.

Recommended Dilutions

Western Blotting (WB): 1:1,000-1:5,000 Flow Cytometry (FCM): 1:2,000
Immunocytochemistry (IC): 1:1,000

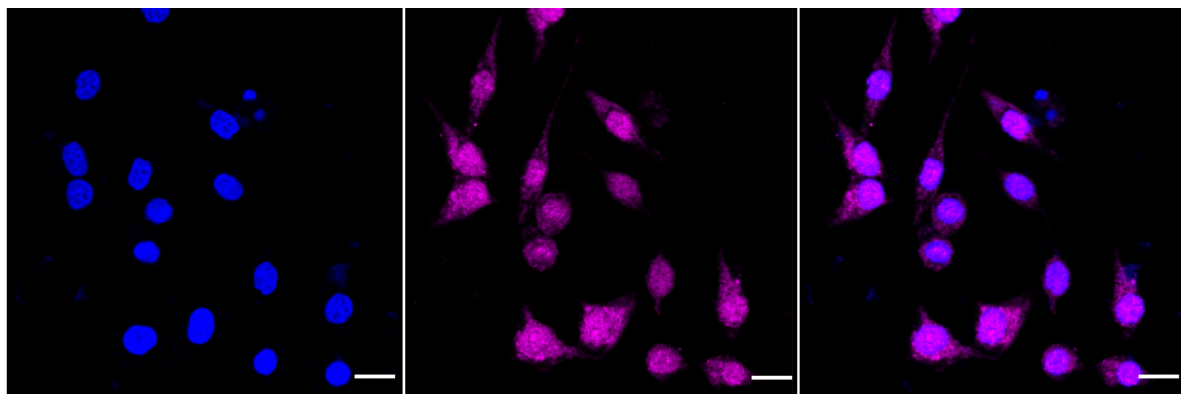
Protocols

For general and specific antibody protocols please visit our website. Read all instructions before using this product.

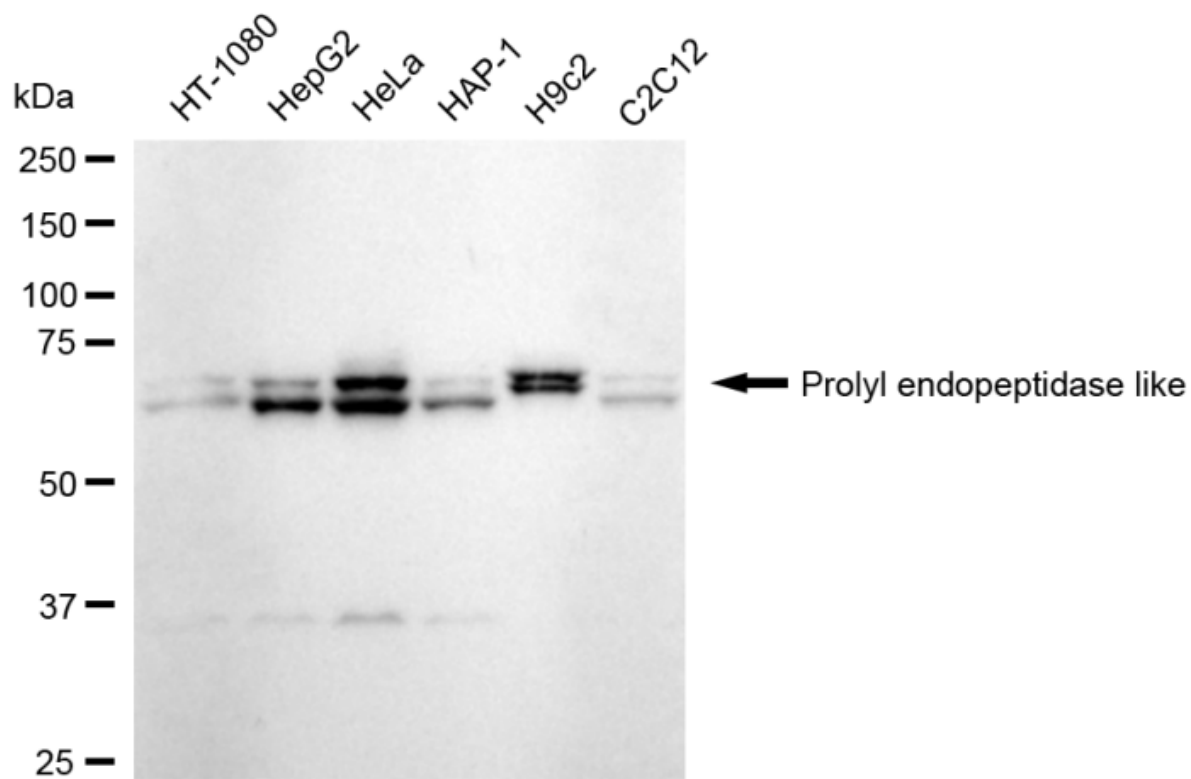


Prolyl endopeptidase like-Alexa Fluor[®] 647

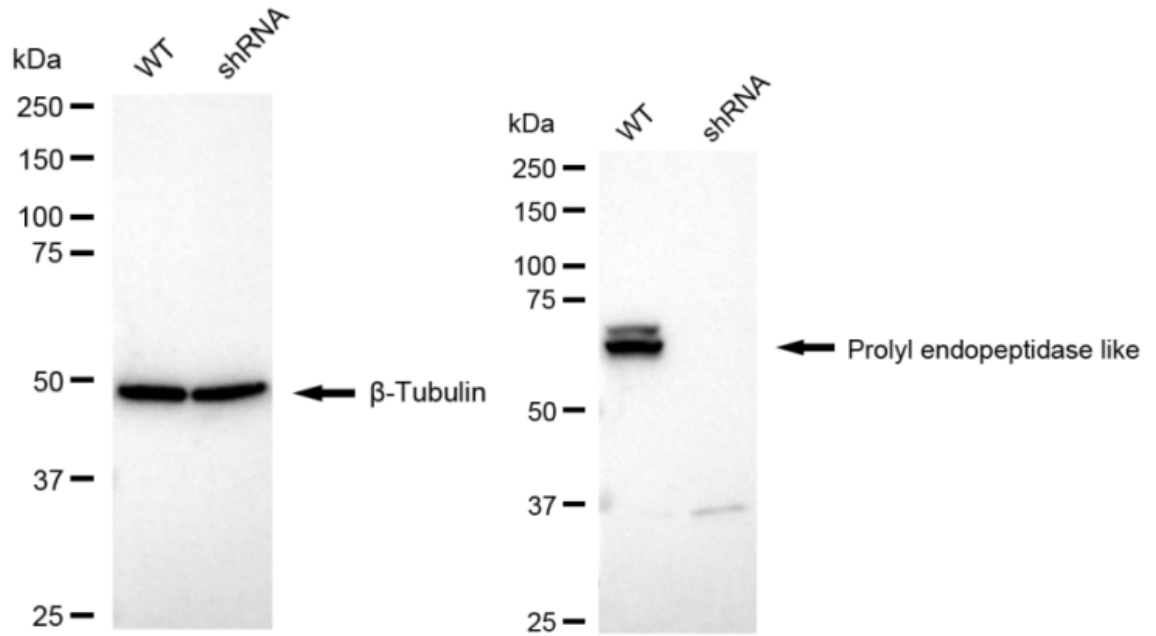
Flow cytometric analysis of Prolyl endopeptidase like expression in HeLa cells using Prolyl endopeptidase like antibody 1:2,000. Green, isotype control; red, Prolyl endopeptidase like.



Immunocytochemical staining of HeLa cells with anti-Prolyl endopeptidase like antibody 1:1,000. Nuclei were stained blue with DAPI; Prolyl endopeptidase like was stained magenta with Alexa Fluor® 647. Images were taken using Leica stellaris 5. Protein abundance based on laser Intensity and smart gain: Medium. Scale bar: 20 μ m.



Western blotting analysis using anti-Prolyl endopeptidase like antibody 1:5,000 and HRP-conjugated goat anti-rabbit secondary antibody 1:20,000 respectively. Image was developed using FeQ™ ECL Substrate Kit .



Western blotting analysis using anti-Prolyl endopeptidase like antibody 1:5,000 and HRP-conjugated goat anti-rabbit secondary antibody 1:20,000 respectively. Image was developed using NaQ™ ECL Substrate Kit .