



SunLong Biotech Co.,LTD
Tel: 0086-571- 56623320 Fax:0086-571- 56623318
E-mail:sales@sunlongbiotech.com
www.sunlongbiotech.com

[KD-Validated] Anti-PPP3CA Rabbit Monoclonal Antibody

Cat No.: KD-10708

Aliases:

PPP3CA; Protein Phosphatase 3 Catalytic Subunit Alpha; Calcineurin A Alpha; PPP2B; CALNA; CNA1; CAM-PRP Catalytic Subunit; EC 3.1.3.16; CNA Alpha; CALN; Protein Phosphatase 3 (Formerly 2B), Catalytic Subunit, Alpha Isoform (Calcineurin A Alpha); Serine/Threonine-Protein Phosphatase 2B Catalytic Subunit Alpha Isoform; Protein Phosphatase 3 (Formerly 2B), Catalytic Subunit, Alpha Isoform; Protein Phosphatase 2B, Catalytic Subunit, Alpha Isoform; Calmodulin-Dependent Calcineurin A Subunit Alpha Isoform; Protein Phosphatase 3, Catalytic Subunit, Alpha Isozyme; Protein Phosphatase 3 Catalytic Subunit Alpha Isozyme; ACCIID; CALNA1; IECEE1; DEE91; IECEE; CCN1; CNA

Background:

UniProt Entry: [Q08209](#);NCBI Gene Entry: [5530](#)

Application Information

Molecular Weight: Predicted, 59 kDa, observed, 59 kDa Clonality: Rabbit monoclonal antibody Clone ID: 23GB2855 Species Reaceivity: Human, Mouse Applicseions Tsted: Western Blotting (WB), Immunocytochemistry (IC)

Immunogen

A synthesized peptide derived from human Calcineurin A

Isotype

Rabbit IgG

Storage Buffer

Supplied in PBS (pH 7.4) containing 50% glycerol, and 0.02% sodium azide.

Storage

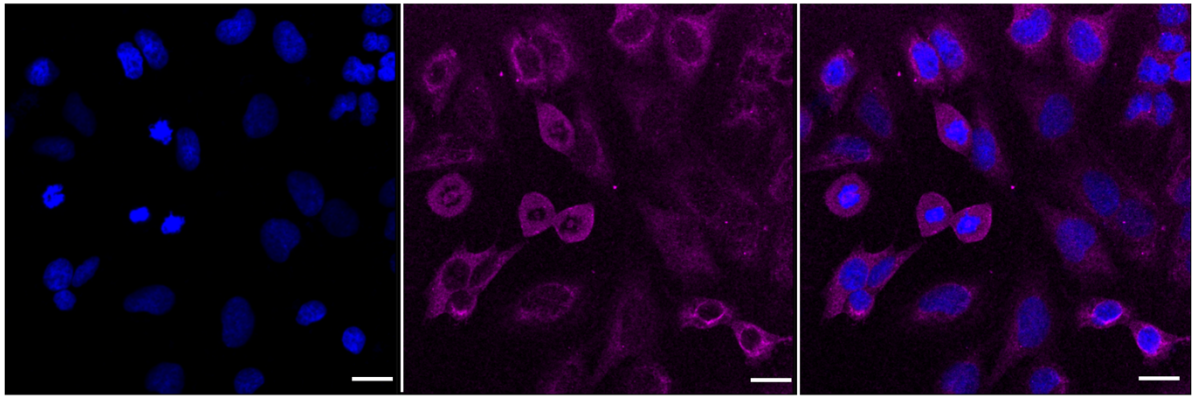
Store at -20 °C for one year.

Recommended Dilutions

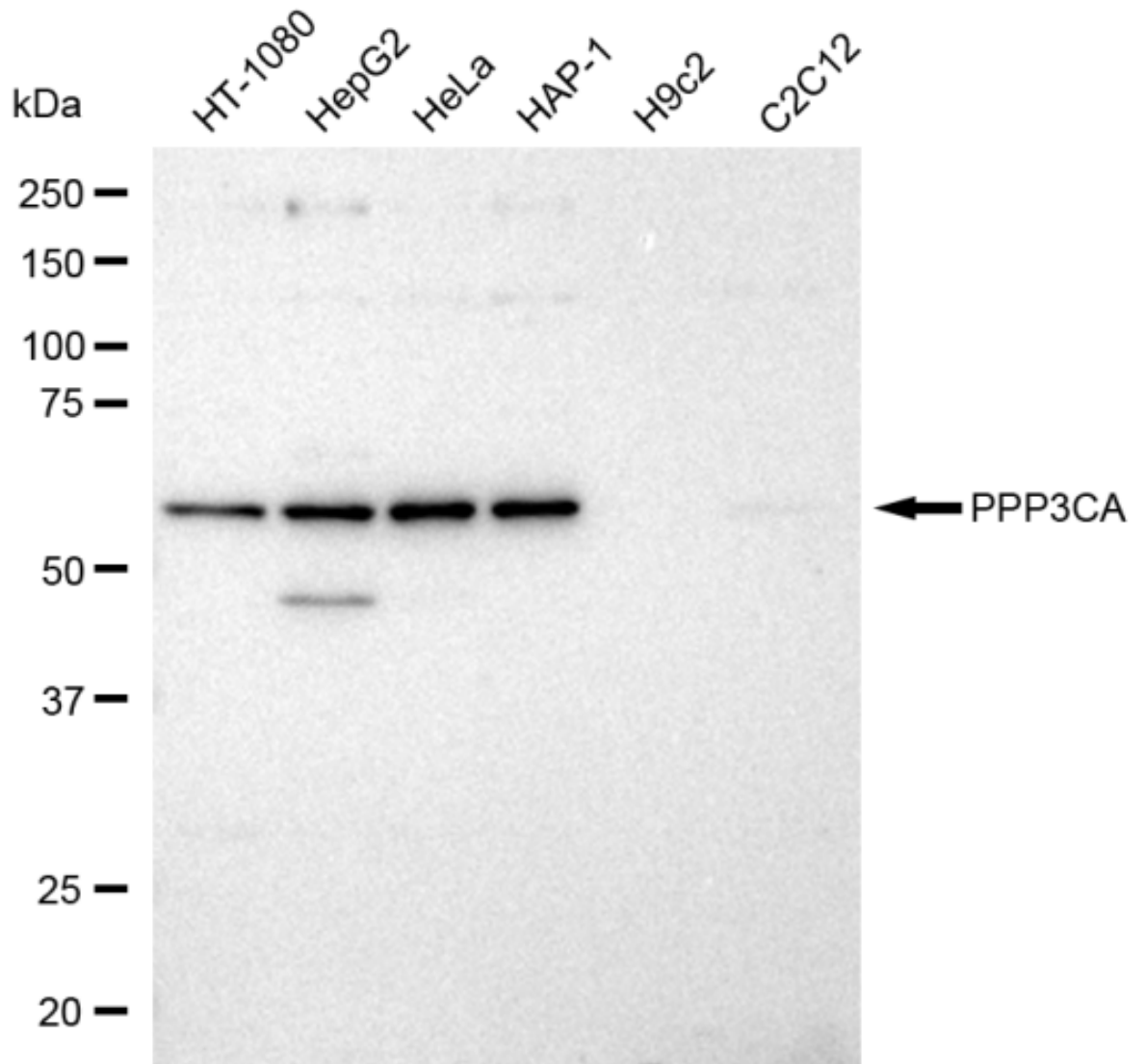
Western Blotting (WB): 1:1,000-1:5,000 Immunocytochemistry (IC): 1:1,000

Protocols

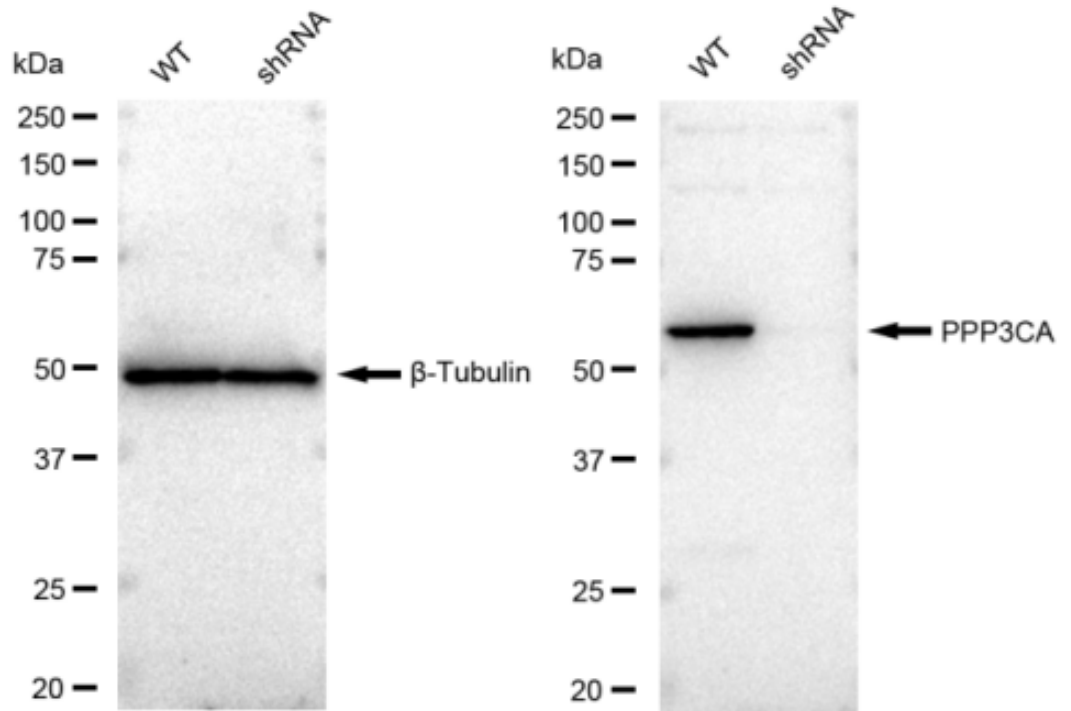
For general and specific antibody protocols please visit our website. Read all instructions before using this product.



Immunocytochemical staining of HeLa cells with PPP3CA antibody 1:1,000. Nuclei were stained blue with DAPI; PPP3CA was stained magenta with Alexa Fluor® 647. Images were taken using Leica stellaris 5. Protein abundance based on laser Intensity and smart gain: Medium. Scale bar: 20 µm.



Western blotting analysis using anti-PPP3CA antibody 1:5,000 and HRP-conjugated goat anti-rabbit secondary antibody 1:20,000 respectively. Image was developed using FeQ™ ECL Substrate Kit . PPP3CA, protein phosphatase 3 catalytic subunit alpha.



Western blotting analysis using anti-PPP3CA antibody 1:5,000 and HRP-conjugated goat anti-rabbit secondary antibody 1:20,000 respectively. Image was developed using FeQ™ ECL Substrate Kit .