



SunLong Biotech Co.,LTD
Tel: 0086-571- 56623320 Fax:0086-571- 56623318
E-mail:sales@sunlongbiotech.com
www.sunlongbiotech.com

[KD-Validated] Anti-PPP2R5E Rabbit Monoclonal Antibody

Cat No.: KD-10707

Aliases:

Protein Phosphatase 2 Regulatory Subunit B'Epsilon; B56epsilon; B56E;
Serine/Threonine-Protein Phosphatase 2A 56 KDa Regulatory Subunit Epsilon Isoform;
Serine/Threonine Protein Phosphatase 2A, 56 KDa Regulatory Subunit, Epsilon; Protein
Phosphatase 2, Regulatory Subunit B (B56), Epsilon Isoform; Protein Phosphatase 2
Regulatory Subunit B', Epsilon; PP2A B Subunit Isoform PR61-Epsilon; PP2A B
Subunit Isoform B56-Epsilon; PP2A B Subunit Isoform B'-Epsilon; PP2A B Subunit
Isoform R5-Epsilon; PP2A, B Subunit, PR61 Epsilon; PP2A, B Subunit, B56 Epsilon;
PP2A, B Subunit, B' Epsilon; PP2A, B Subunit, R5 Epsilon

Background:

UniProt Entry: [Q16537](#);NCBI Gene Entry: [5529](#)

Application Information

Molecular Weight: Predicted, 55 kDa, observed, 50 kDa Clonality: Rabbit monoclonal
antibody Clone ID: 24GB1215 Species Reactivity: Human, Mouse, Rat Applications
Tested: Western Blotting (WB), Flow Cytometry (FCM), Immunocytochemistry (IC)

Immunogen

A synthesized peptide derived from human PPP2R5E

Isotype

Rabbit IgG

Storage Buffer

Supplied in PBS (pH 7.4) containing 50% glycerol, and 0.02% sodium azide.

Storage

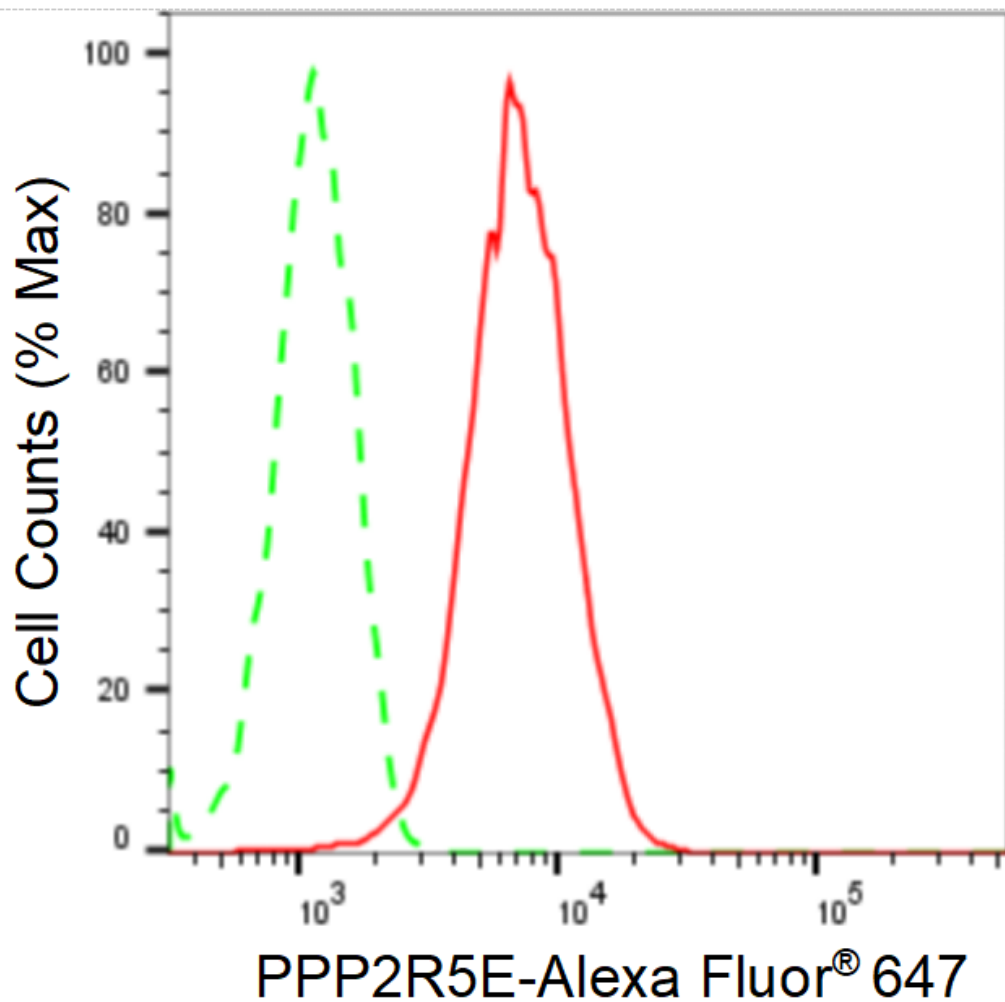
Store at -20 °C for one year.

Recommended Dilutions

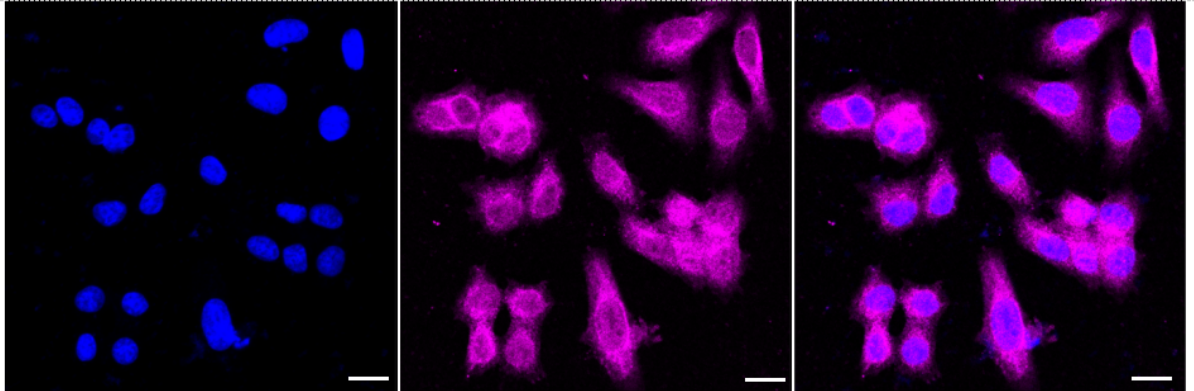
Western Blotting (WB): 1:1,000-1:5,000 Flow Cytometry (FCM): 1:2,000
Immunocytochemistry (IC): 1:1,000

Protocols

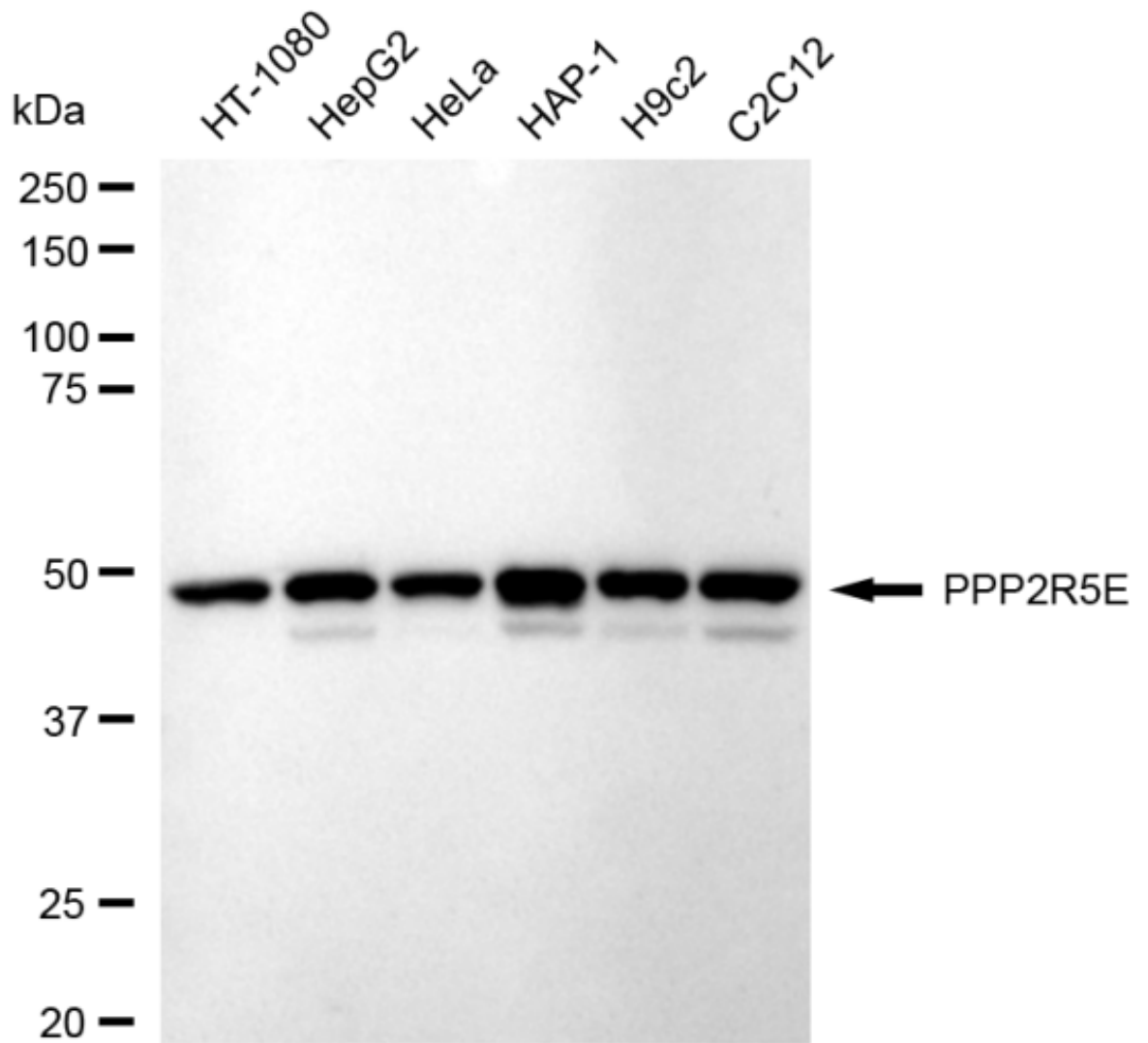
For general and specific antibody protocols please visit our website. Read all instructions before using this product.



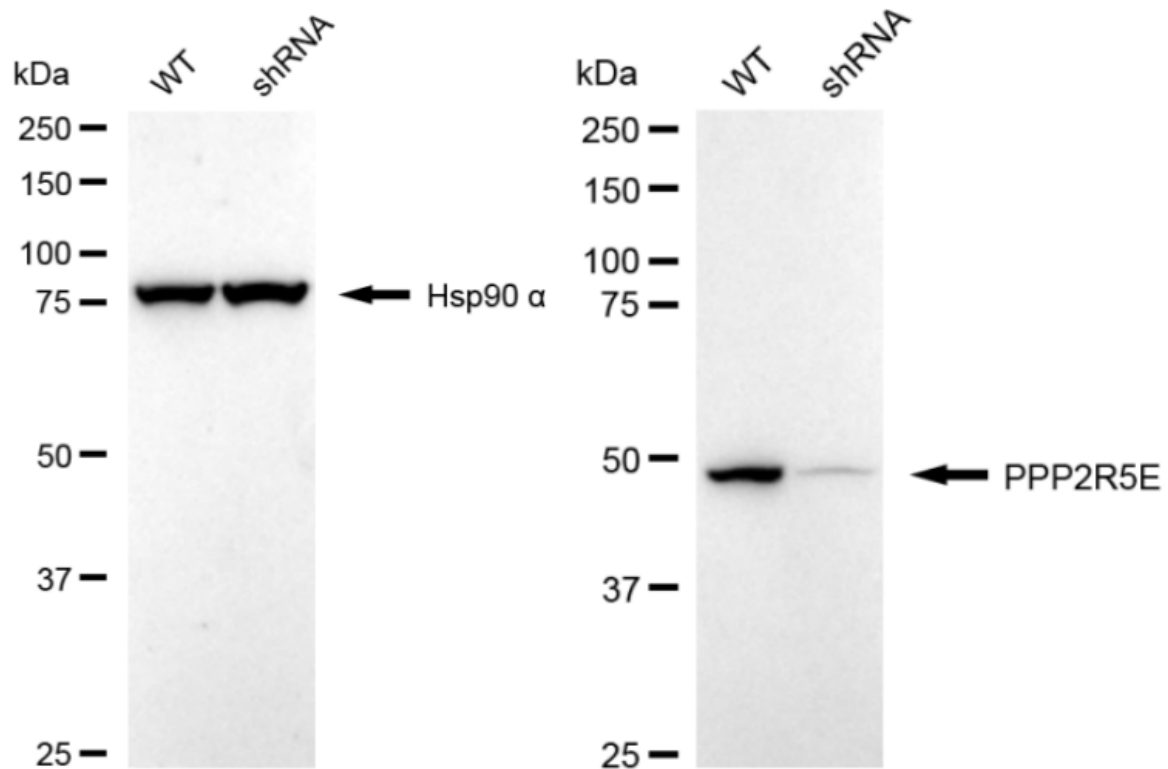
Flow cytometric analysis of PPP2R5E expression in HepG2 cells using anti-PPP2R5E antibody 1:2,000. Green, isotype control; red, PPP2R5E.



Immunocytochemical staining of HepG2 cells with anti-PPP2R5E antibody 1:1,000. Nuclei were stained blue with DAPI; PPP2R5E was stained magenta with Alexa Fluor® 647. Images were taken using Leica stellaris 5. Protein abundance based on laser Intensity and smart gain: Medium. Scale bar: 20 μ m.



Western blotting analysis using anti-PPP2R5E antibody 1:5,000 and HRP-conjugated goat anti-rabbit secondary antibody 1:20,000 respectively. Image was developed using FeQ™ ECL Substrate Kit



Western blotting analysis using anti-PPP2R5E antibody 1:5,000 and HRP-conjugated goat anti-rabbit secondary antibody 1:20,000 respectively. Image was developed using NaQ™ ECL Substrate Kit .