



SunLong Biotech Co.,LTD  
Tel: 0086-571- 56623320 Fax:0086-571- 56623318  
E-mail:sales@sunlongbiotech.com  
www.sunlongbiotech.com

## **[KD-Validated] Anti-PPM1G Rabbit Monoclonal Antibody**

Cat No.: KD-10706

### **Aliases:**

PPM1G; Protein Phosphatase, Mg<sup>2+</sup>/Mn<sup>2+</sup> Dependent 1G; PP2CG; Protein Phosphatase Magnesium-Dependent 1 Gamma; Protein Phosphatase 1G ; Protein Phosphatase 1C; EC 3.1.3.16; PP2C-Gamma; PP2CGAMMA; Protein Phosphatase 1G (Formerly 2C), Magnesium-Dependent, Gamma Isoform; Protein Phosphatase, Mg<sup>2+</sup>/Mn<sup>2+</sup> Dependent, 1G; Protein Phosphatase 2C, Gamma Isoform; Protein Phosphatase 2C Isoform Gamma; PP2C, Gamma; PP2Cgamma; PPP2CG; PPM1C

### **Background:**

UniProt Entry: [O15355](#);NCBI Gene Entry: [5496](#)

### **Application Information**

Molecular Weight: Predicted, 59 kDa, observed, 72 kDa Clonality: Rabbit monoclonal antibody Clone ID: 23GB2585 Species Reactivity: Human, Mouse, Rat Applications Tested: Western Blotting (WB), Flow Cytometry (FCM), Immunocytochemistry (IC)

### **Immunogen**

A synthesized peptide derived from human PPM1G

### **Isotype**

Rabbit IgG

### **Storage Buffer**

Supplied in PBS (pH 7.4) containing 50% glycerol, and 0.02% sodium azide.

### Storage

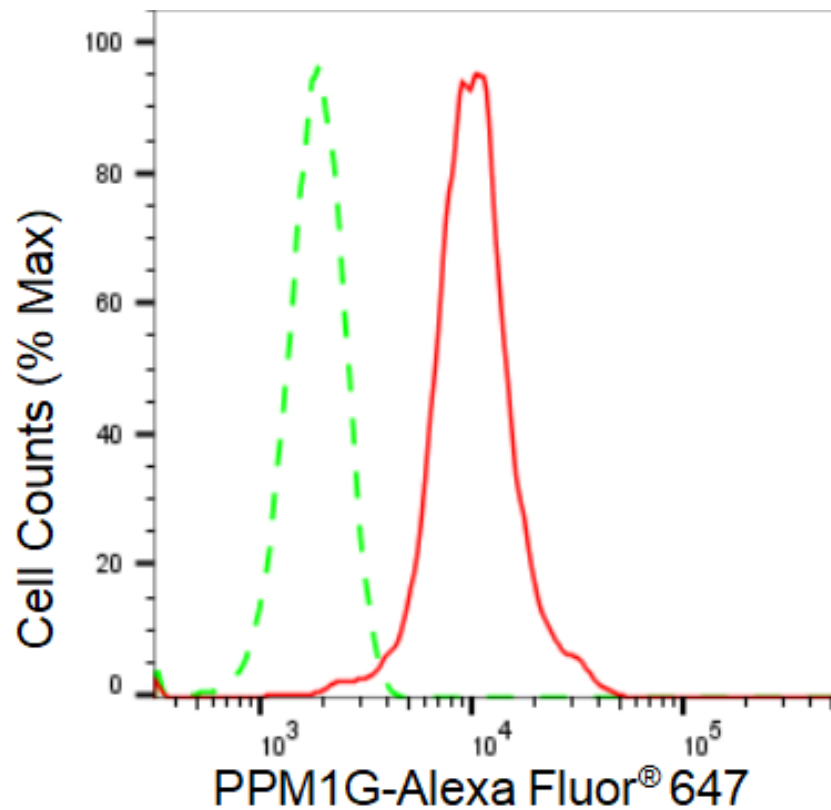
Store at -20 °C for one year.

### Recommended Dilutions

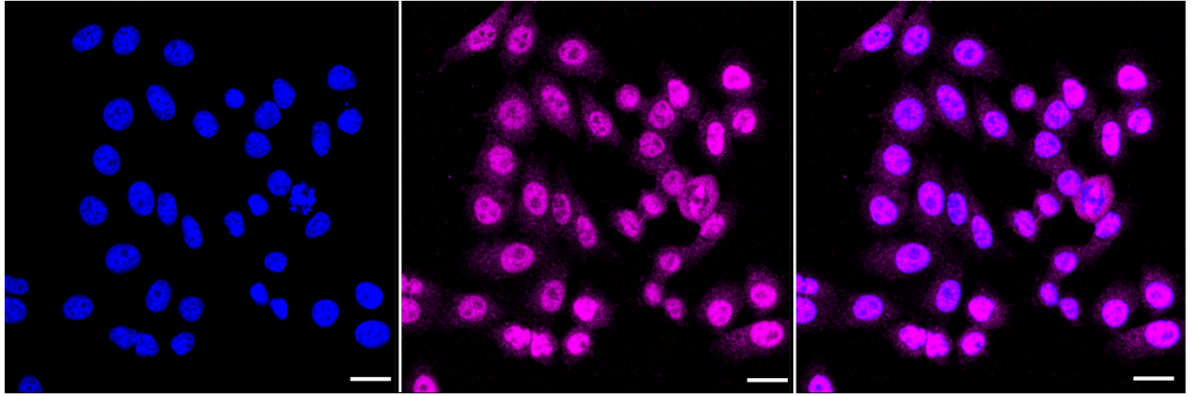
Western Blotting (WB): 1:1,000-1:5,000 Flow Cytometry (FCM): 1:2,000  
Immunocytochemistry (IC): 1:1,000

### Protocols

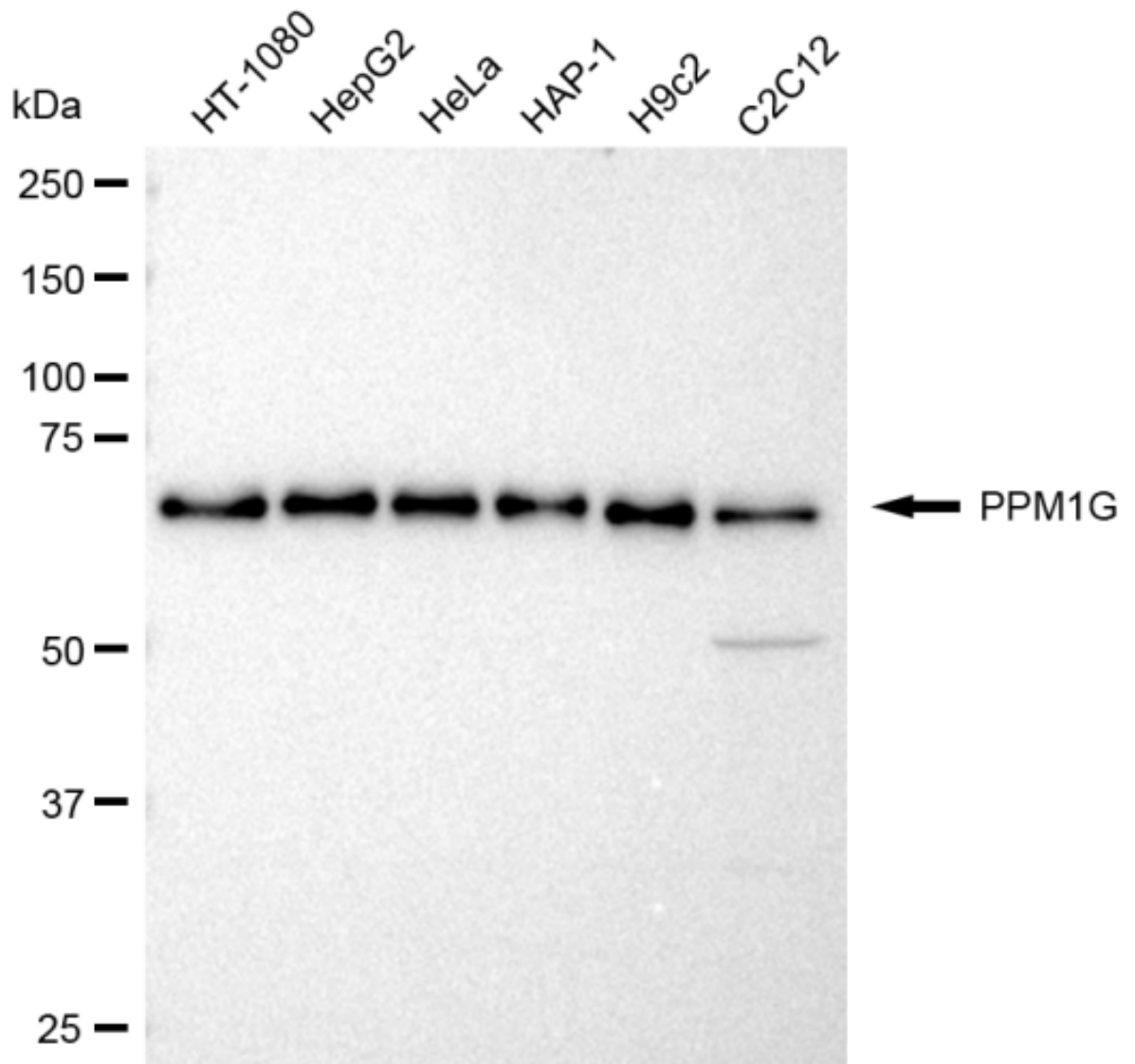
For general and specific antibody protocols please visit our website. Read all instructions before using this product.



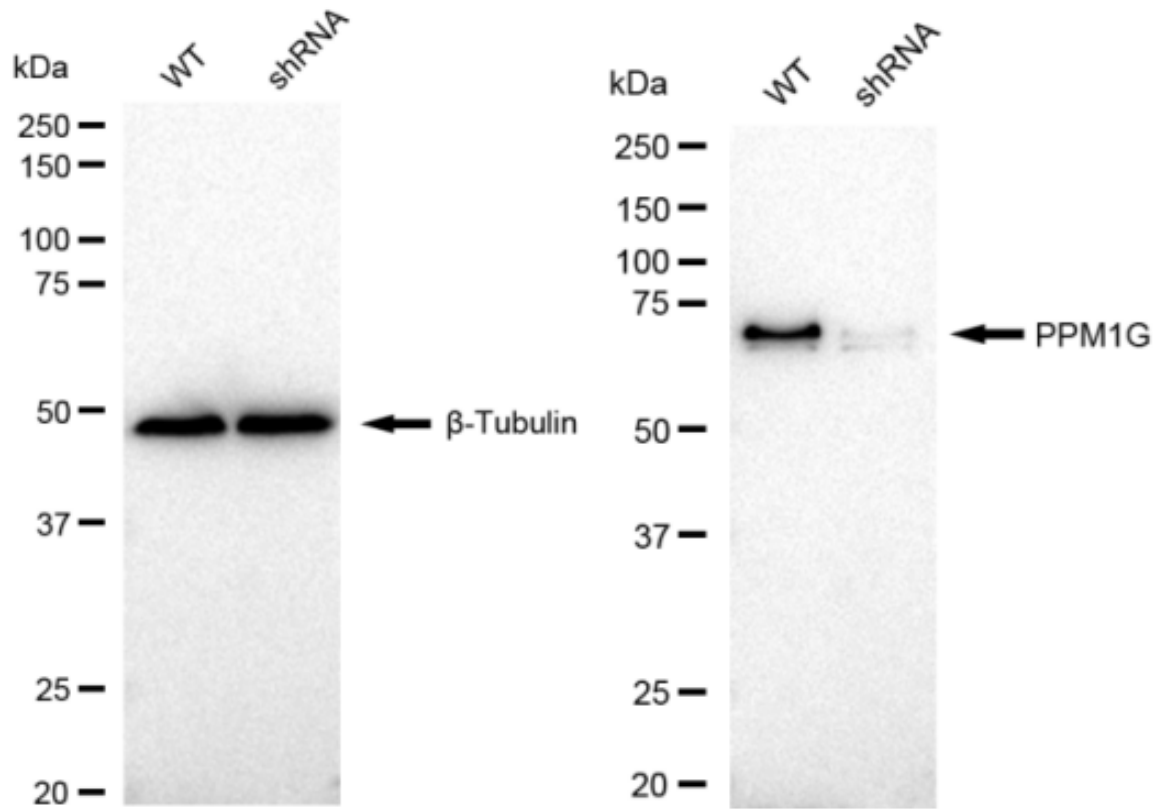
Flow cytometric analysis of PPM1G expression in HepG2 cells using PPM1G antibody 1:2,000. Green, isotype control; red, PPM1G.



Immunocytochemical staining of HepG2 cells with PPM1G antibody 1:1,000. Nuclei were stained blue with DAPI; PPM1G was stained magenta with Alexa Fluor® 647. Images were taken using Leica stellaris 5. Protein abundance based on laser Intensity and smart gain: High. Scale bar: 20  $\mu\text{m}$ .



Western blotting analysis using anti-PPM1G antibody 1:5,000 and HRP-conjugated goat anti-rabbit secondary antibody 1:20,000 respectively. Image was developed using FeQ™ ECL Substrate Kit .



Western blotting analysis using anti-PPM1G antibody 1:5000 and HRP-conjugated goat anti-rabbit secondary antibody 1:20000 respectively. Image was developed using FeQ™ ECL Substrate Kit .