



SunLong Biotech Co.,LTD
Tel: 0086-571- 56623320 Fax:0086-571- 56623318
E-mail:sales@sunlongbiotech.com
www.sunlongbiotech.com

[KD-Validated] Anti-PPM1G Rabbit Monoclonal Antibody

Cat No.: KD-10705

Aliases:

PPM1G; Protein Phosphatase, Mg²⁺/Mn²⁺ Dependent 1G; PP2CG; Protein Phosphatase Magnesium-Dependent 1 Gamma; Protein Phosphatase 1G ; Protein Phosphatase 1C; EC 3.1.3.16; PP2C-Gamma; PP2CGAMMA; Protein Phosphatase 1G (Formerly 2C), Magnesium-Dependent, Gamma Isoform; Protein Phosphatase, Mg²⁺/Mn²⁺ Dependent, 1G; Protein Phosphatase 2C, Gamma Isoform; Protein Phosphatase 2C Isoform Gamma; PP2C, Gamma; PP2Cgamma; PPP2CG; PPM1C

Background:

UniProt Entry: [O15355](#);NCBI Gene Entry: [5496](#)

Application Information

Molecular Weight: Predicted, 59 kDa, observed, 72 kDa Clonality: Rabbit monoclonal antibody Clone ID: 23GB2590 Species Reactivity: Human, Mouse, Rat Applications Tested: Western Blotting (WB), Flow Cytometry (FCM), Immunocytochemistry (IC)

Immunogen

A synthesized peptide derived from human PPM1G

Isotype

Rabbit IgG

Storage Buffer

Supplied in PBS (pH 7.4) containing 50% glycerol, and 0.02% sodium azide.

Storage

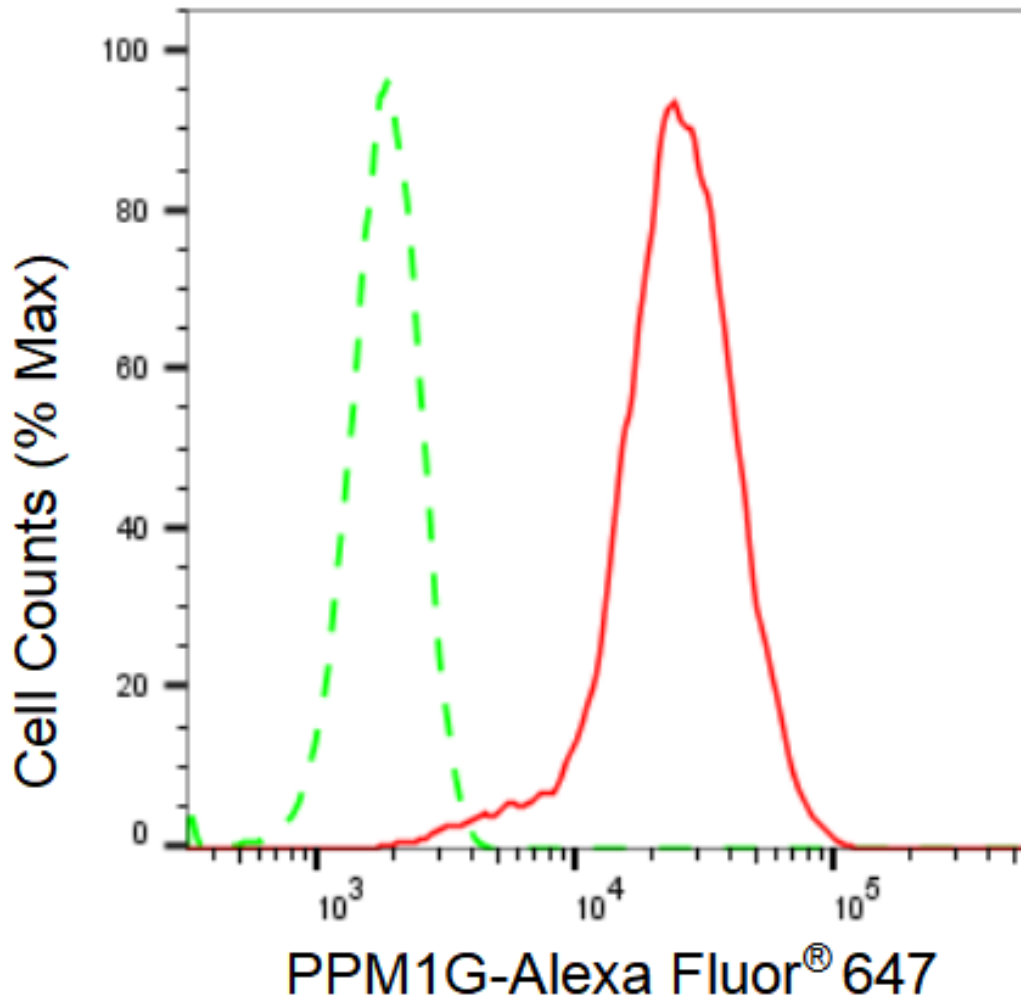
Store at -20 °C for one year.

Recommended Dilutions

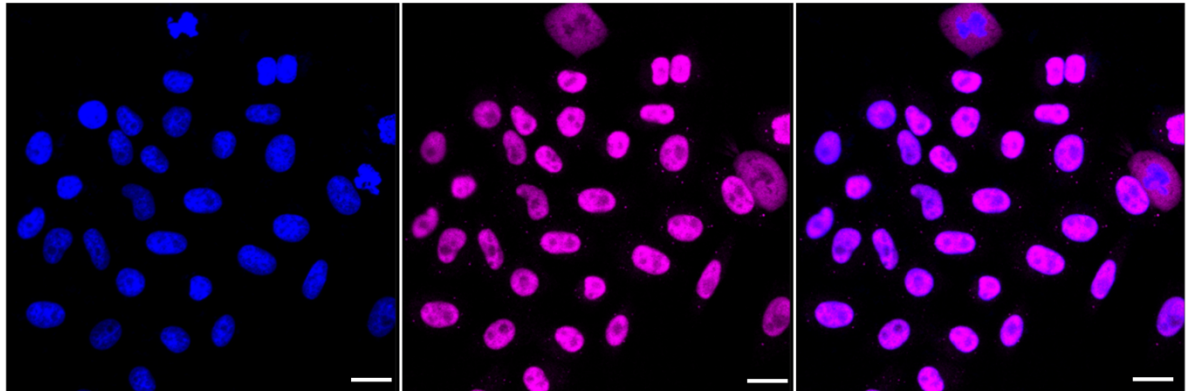
Western Blotting (WB): 1:1,000-1:5,000 Flow Cytometry (FCM): 1:2,000
Immunocytochemistry (IC): 1:1,000

Protocols

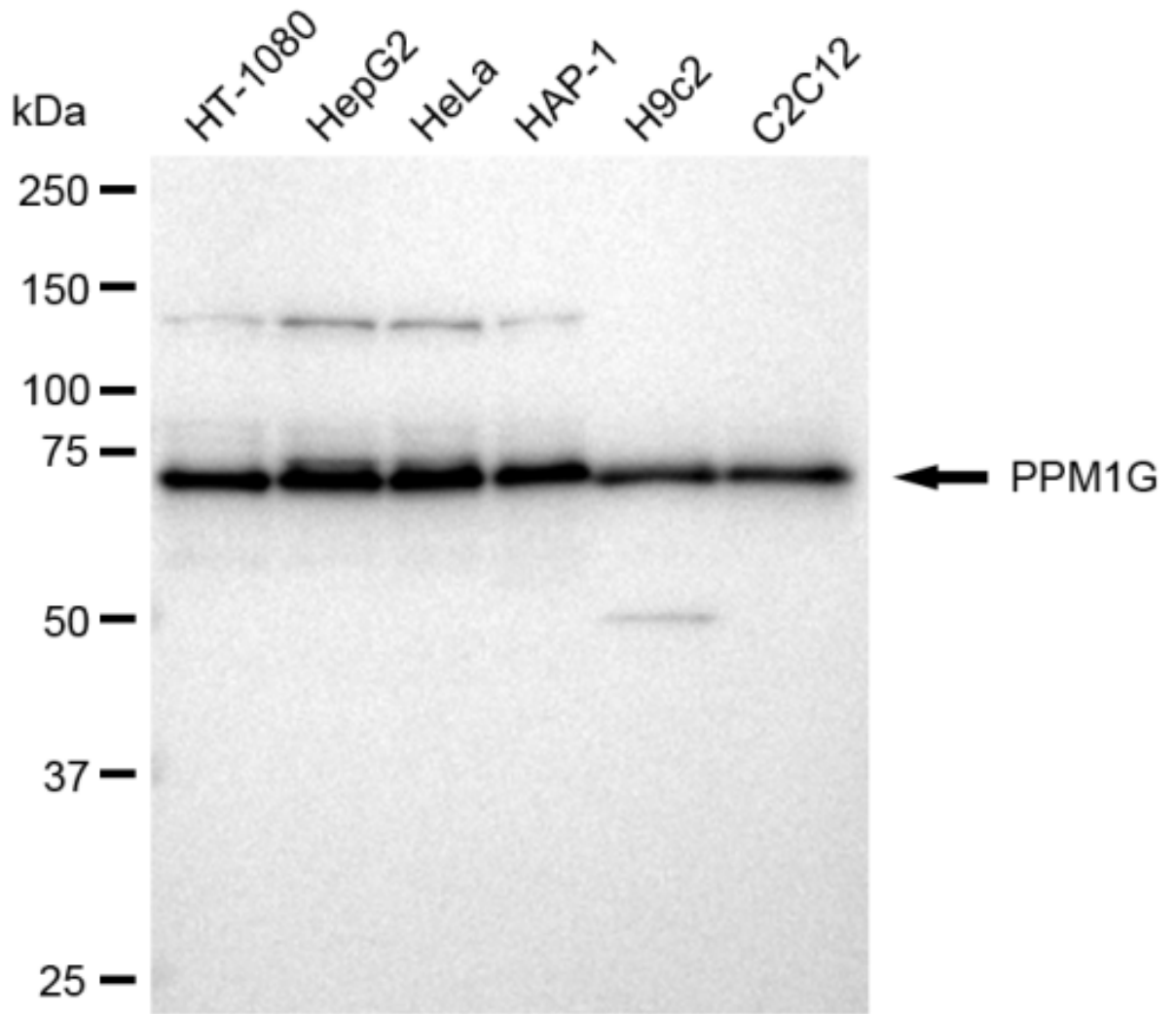
For general and specific antibody protocols please visit our website. Read all instructions before using this product.



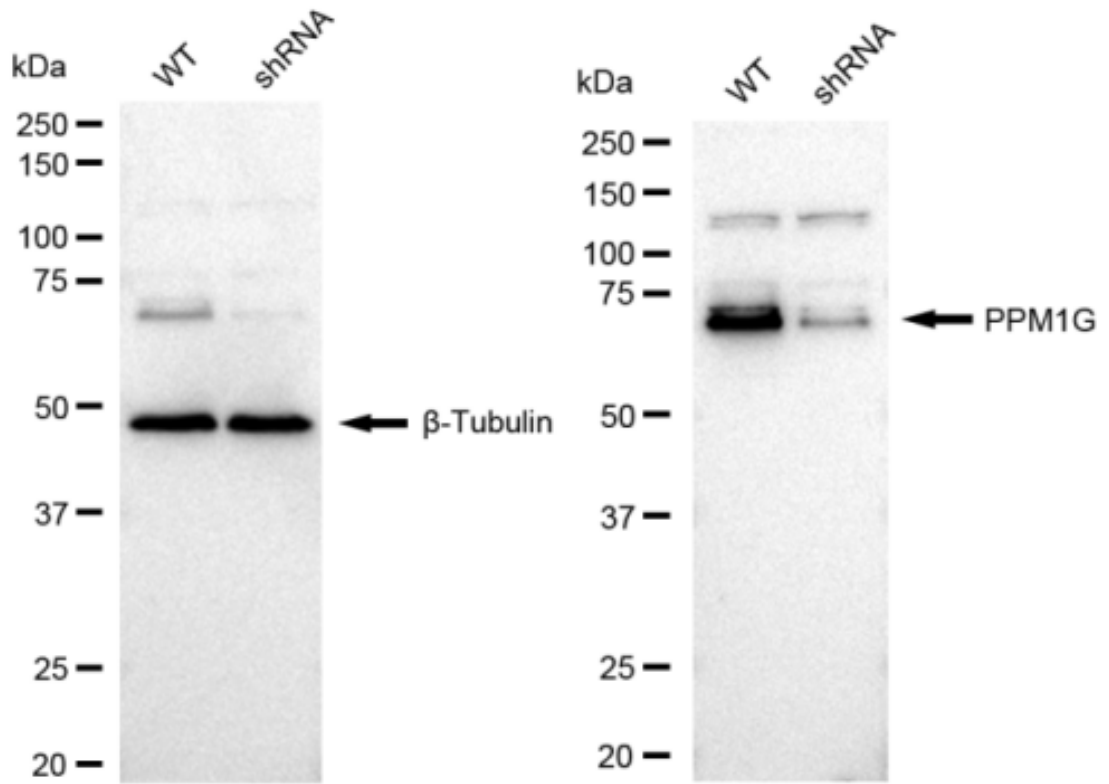
Flow cytometric analysis of PPM1G expression in HepG2 cells using PPM1G antibody 1:2,000. Green, isotype control; red, PPM1G.



Immunocytochemical staining of HepG2 cells with PPM1G antibody 1:1,000. Nuclei were stained blue with DAPI; PPM1G was stained magenta with Alexa Fluor® 647. Images were taken using Leica stellaris 5. Protein abundance based on laser Intensity and smart gain: Medium. Scale bar: 20 μ m.



Western blotting analysis using anti-PPM1G antibody 1:5,000 and HRP-conjugated goat anti-rabbit secondary antibody 1:20,000 respectively. Image was developed using FeQ™ ECL Substrate Kit .



Western blotting analysis using anti-PPM1G antibody 1:5,000 and HRP-conjugated goat anti-rabbit secondary antibody 1:20,000 respectively. Image was developed using FeQ™ ECL Substrate Kit .