



SunLong Biotech Co.,LTD
Tel: 0086-571- 56623320 Fax:0086-571- 56623318
E-mail:sales@sunlongbiotech.com
www.sunlongbiotech.com

[KD-Validated] Anti-Peptidylprolyl isomerase F Rabbit Monoclonal Antibody

Cat No.: KD-10704

Aliases:

PPIF; Peptidylprolyl Isomerase F; Cyclophilin D; CypD; Peptidyl-Prolyl Cis-Trans Isomerase F, Mitochondrial; Mitochondrial Cyclophilin; Cyclophilin F; Rotamase F; EC 5.2.1.8; PPIase F; Cyp-D; CyP-M; CYP3; Peptidyl-Prolyl Cis-Trans Isomerase, Mitochondrial; Peptidylprolyl Isomerase F (Cyclophilin F; Cyclophilin 3; HCYP3; CYP-D; HCYP3; CyP-D; CYPD

Background:

UniProt Entry: [P30405](#);NCBI Gene Entry: [10105](#)

Application Information

Molecular Weight: Predicted, 22 kDa, observed, 18 kDa Clonality: Rabbit monoclonal antibody Clone ID: 23GB2140 Species Reactivity: Human, Mouse, Rat Applications Tested: Western Blotting (WB), Flow Cytometry (FCM), Immunocytochemistry (IC)

Immunogen

A synthesized peptide derived from human Cyclophilin F

Isotype

Rabbit IgG

Storage Buffer

Supplied in PBS (pH 7.4) containing 50% glycerol, and 0.02% sodium azide.

Storage

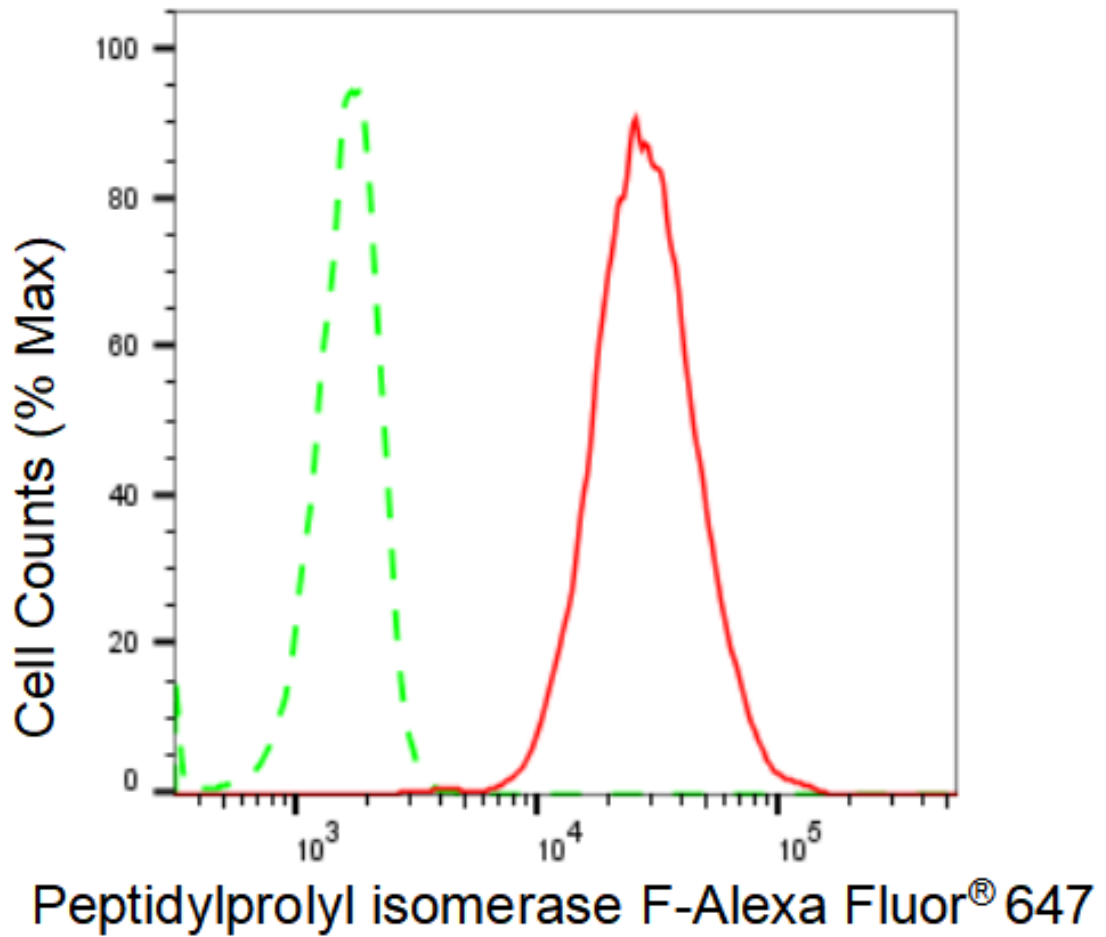
Store at -20 °C for one year.

Recommended Dilutions

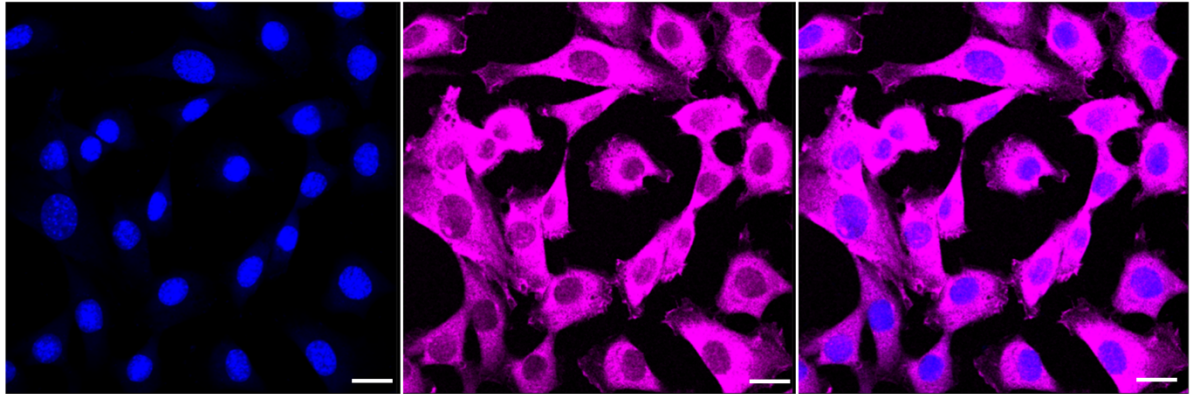
Western Blotting (WB): 1:1,000-1:5,000 Flow Cytometry (FCM): 1:2,000
Immunocytochemistry (IC): 1:1,000

Protocols

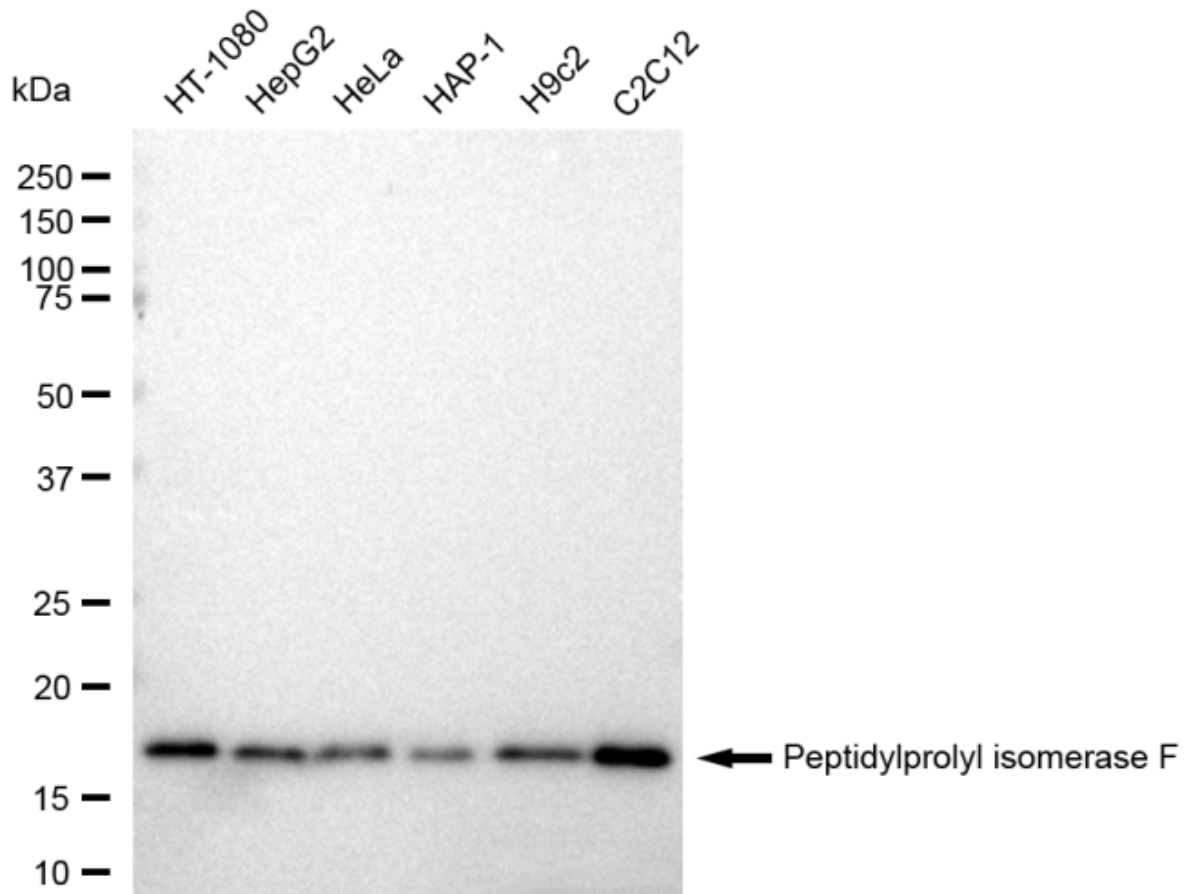
For general and specific antibody protocols please visit our website. Read all instructions before using this product.



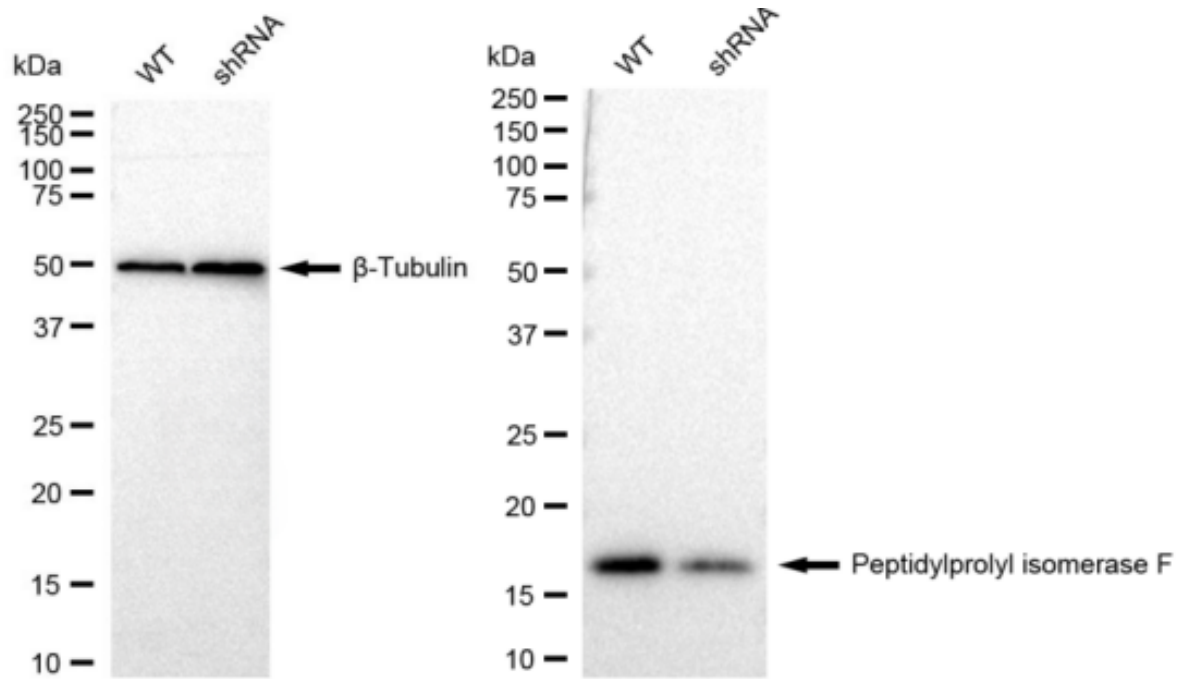
Flow cytometric analysis of Peptidylprolyl isomerase F expression in C2C12 cells using Peptidylprolyl isomerase F antibody 1:2,000. Green, isotype control; red, Peptidylprolyl isomerase F.



Immunocytochemical staining of C2C12 cells with Peptidylprolyl isomerase F antibody 1:1,000. Nuclei were stained blue with DAPI; Peptidylprolyl isomerase F was stained magenta with Alexa Fluor® 647. Images were taken using Leica stellaris 5. Protein abundance based on laser Intensity and smart gain: High. Scale bar: 20 µm.



Western blotting analysis using anti-Peptidylprolyl isomerase F antibody 1:5,000 and HRP-conjugated goat anti-rabbit secondary antibody 1:20,000 respectively. Image was developed using FeQ™ ECL Substrate Kit .



Western blotting analysis using anti-Peptidylprolyl isomerase F antibody 1:5,000 and HRP-conjugated goat anti-rabbit secondary antibody 1:20,000 respectively. Image was developed using FeQ™ ECL Substrate Kit .