



SunLong Biotech Co.,LTD
Tel: 0086-571- 56623320 Fax:0086-571- 56623318
E-mail:sales@sunlongbiotech.com
www.sunlongbiotech.com

[KD-Validated] Anti-Peptidylprolyl Isomerase D Rabbit Monoclonal Antibody

Cat No.: KD-10703

Aliases:

Peptidylprolyl Isomerase D; CYP-40; CypD; Peptidyl-Prolyl Cis-Trans Isomerase D; Cyclophilin-Related Protein; Cyclophilin 40; Rotamase D; EC 5.2.1.8; PPIase D; 40 KDa Peptidyl-Prolyl Cis-Trans Isomerase D; Peptidylprolyl Isomerase D (Cyclophilin D); 40 KDa Peptidyl-Prolyl Cis-Trans Isomerase; Testicular Tissue Protein Li 147; Cyclophilin-40; Cyclophilin D; CYP40; CYPD

Background:

UniProt Entry: [Q08752](#);NCBI Gene Entry: [5481](#)

Application Information

Molecular Weight: Predicted, 41 kDa, observed, 36 kDa Clonality: Rabbit monoclonal antibody Clone ID: 24GB1560 Species Reactivity: Human, Mouse, Rat Applications Tested: Western Blotting (WB), Flow Cytometry (FCM), Immunocytochemistry (IC)

Immunogen

A synthesized peptide derived from human Cyclophilin 40

Isotype

Rabbit IgG

Storage Buffer

Supplied in PBS (pH 7.4) containing 50% glycerol, and 0.02% sodium azide.

Storage

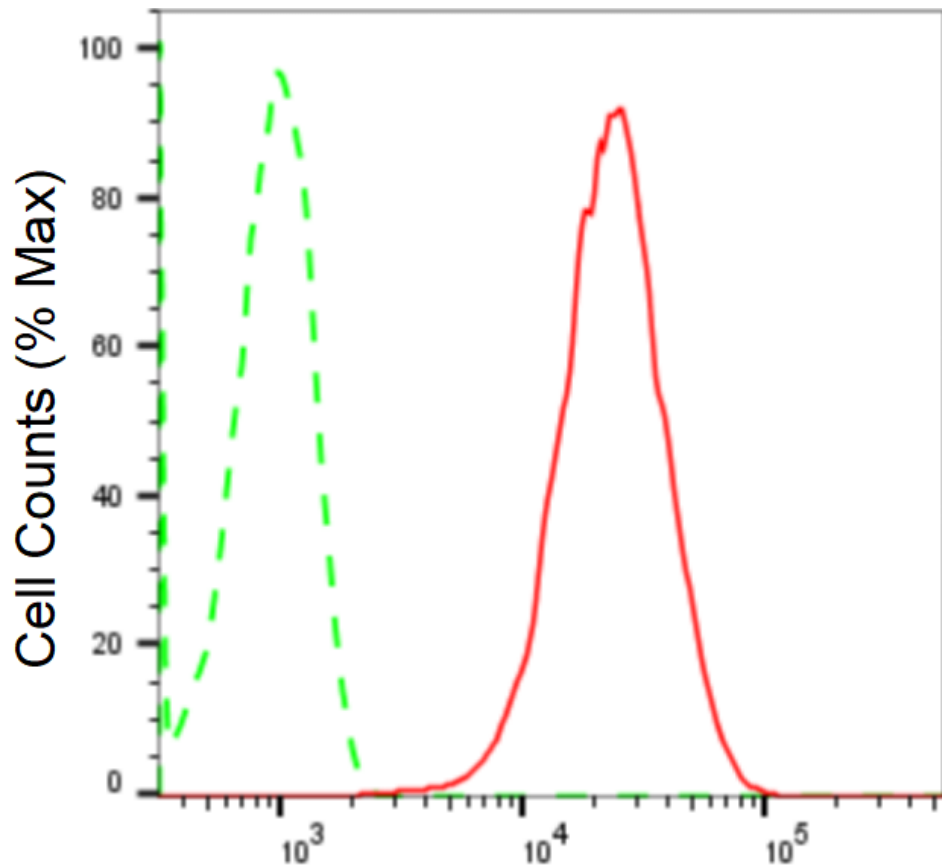
Store at -20 °C for one year.

Recommended Dilutions

Western Blotting (WB): 1:1,000-1:5,000 Flow Cytometry (FCM): 1:2,000
Immunocytochemistry (IC): 1:1,000

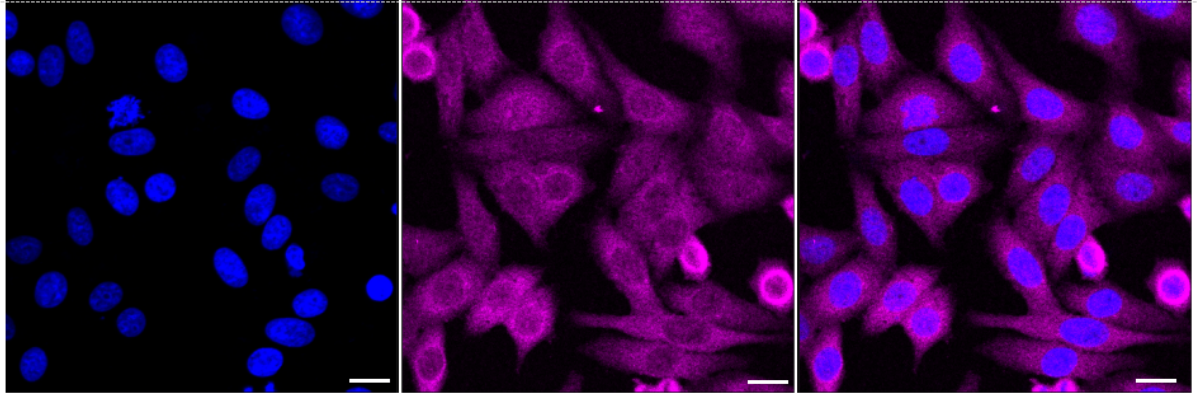
Protocols

For general and specific antibody protocols please visit our website. Read all instructions before using this product.

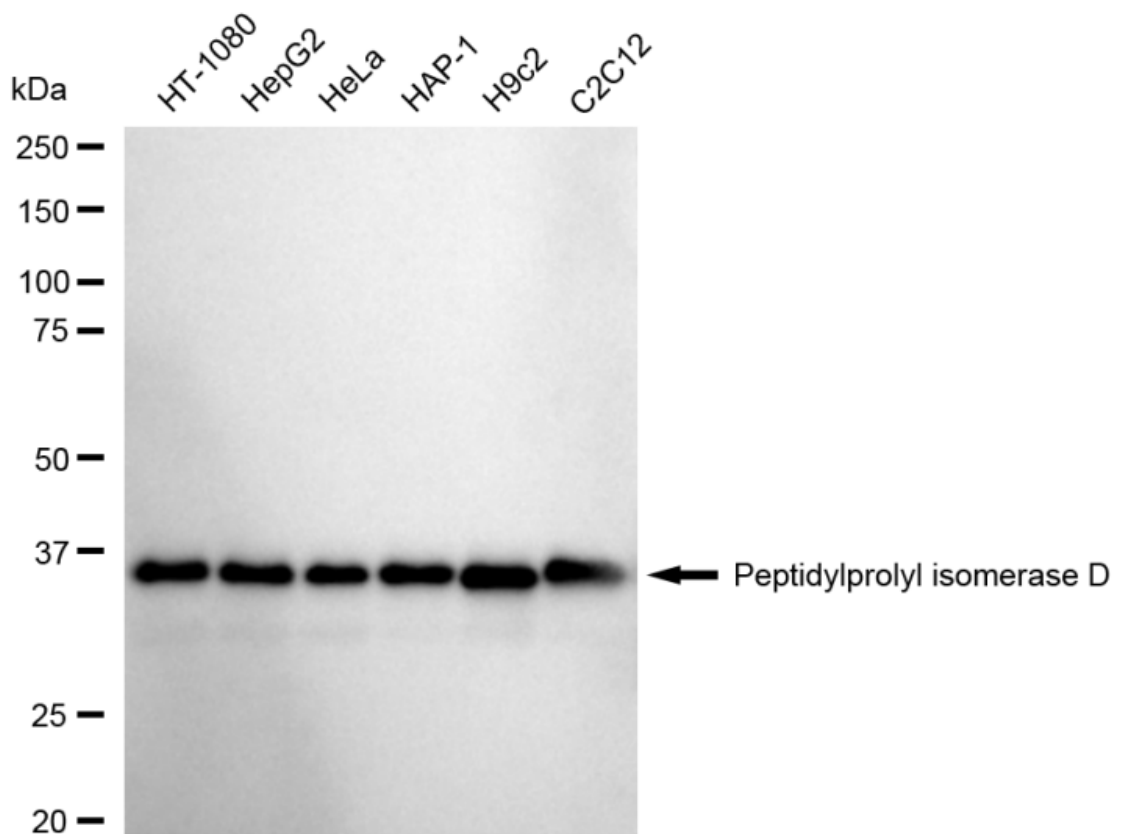


Peptidylprolyl isomerase D-Alexa Fluor[®] 647

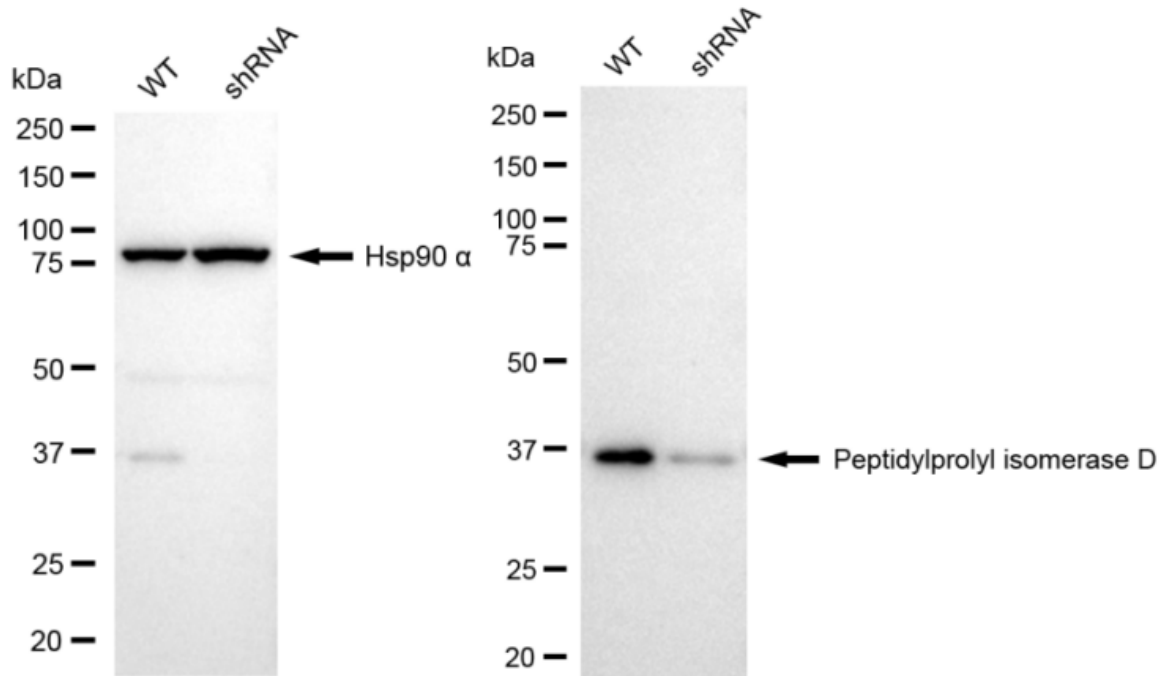
Flow cytometric analysis of Peptidylprolyl isomerase D expression in HepG2 cells using anti-Peptidylprolyl isomerase D antibody 1:2,000. Green, isotype control; red, Peptidylprolyl isomerase D.



Immunocytochemical staining of HepG2 cells with anti-Peptidylprolyl isomerase D antibody 1:1,000. Nuclei were stained blue with DAPI; Peptidylprolyl isomerase D was stained magenta with Alexa Fluor® 647. Images were taken using Leica stellaris 5. Protein abundance based on laser Intensity and smart gain: Medium. Scale bar: 20 μ m.



Western blotting analysis using anti-Peptidylprolyl isomerase D antibody 1:5,000 and HRP-conjugated goat anti-rabbit secondary antibody 1:20,000 respectively. Image was developed using FeQ™ ECL Substrate Kit .



Western blotting analysis using anti-Peptidylprolyl isomerase D antibody 1:5,000 and HRP-conjugated goat anti-rabbit secondary antibody 1:20,000 respectively. Image was developed using NaQ™ ECL Substrate Kit .