



SunLong Biotech Co.,LTD
Tel: 0086-571- 56623320 Fax:0086-571- 56623318
E-mail:sales@sunlongbiotech.com
www.sunlongbiotech.com

[KD-Validated] Anti-Peptidylprolyl Isomerase A Rabbit Monoclonal Antibody

Cat No.: KD-10702

Aliases:

Peptidylprolyl Isomerase A; CYPA; Peptidyl-Prolyl Cis-Trans Isomerase A; Cyclosporin A-Binding Protein; Cyclophilin A; Rotamase A; EC 5.2.1.8; PPIase A; Epididymis Secretory Sperm Binding Protein Li 69p; Peptidylprolyl Isomerase A (Cyclophilin A); T Cell Cyclophilin; HEL-S-69p; CYPH

Background:

UniProt Entry: [P62937](#);NCBI Gene Entry: [5478](#)

Application Information

Molecular Weight: Predicted, 18 kDa, observed, 18 kDa Clonality: Rabbit monoclonal antibody Clone ID: 24GB905 Species Reaceivity: Human, Mouse Applicseions Tsted: Western Blotting (WB), Flow Cytometry (FCM), Immunocytochemistry (IC)

Immunogen

A synthesized peptide derived from human Cyclophilin A

Isotype

Rabbit IgG

Storage Buffer

Supplied in PBS (pH 7.4) containing 50% glycerol, and 0.02% sodium azide.

Storage

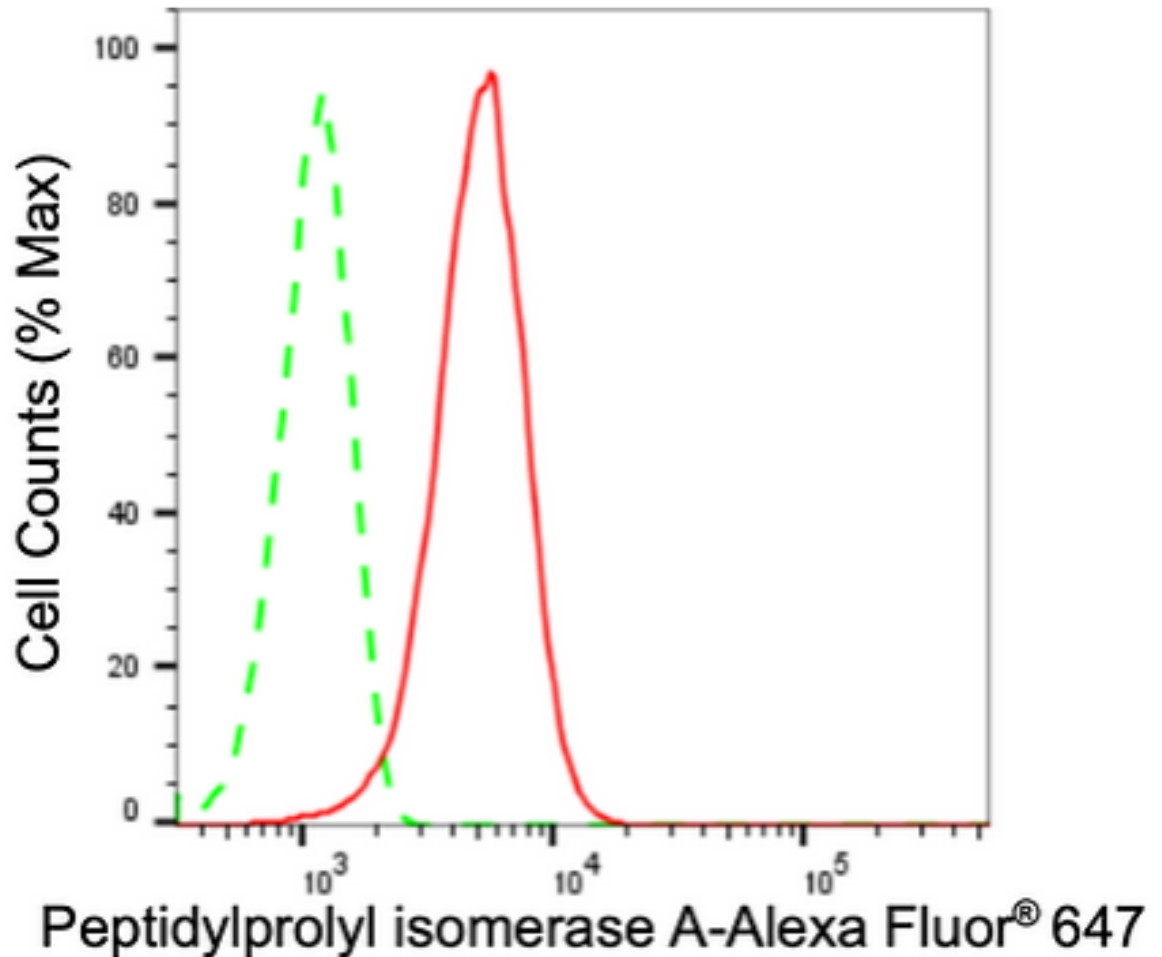
Store at -20 °C for one year.

Recommended Dilutions

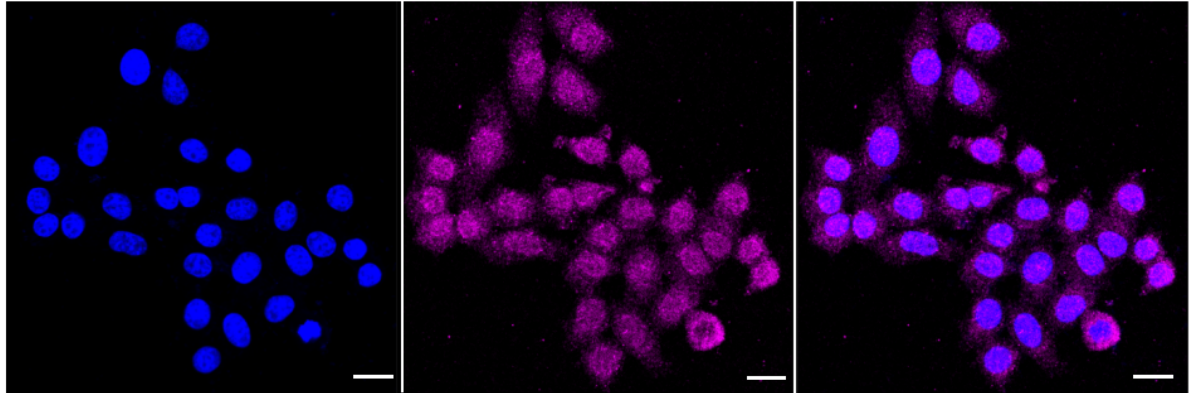
Western Blotting (WB): 1:1,000-1:5,000 Flow Cytometry (FCM): 1:2,000
Immunocytochemistry (IC): 1:1,000

Protocols

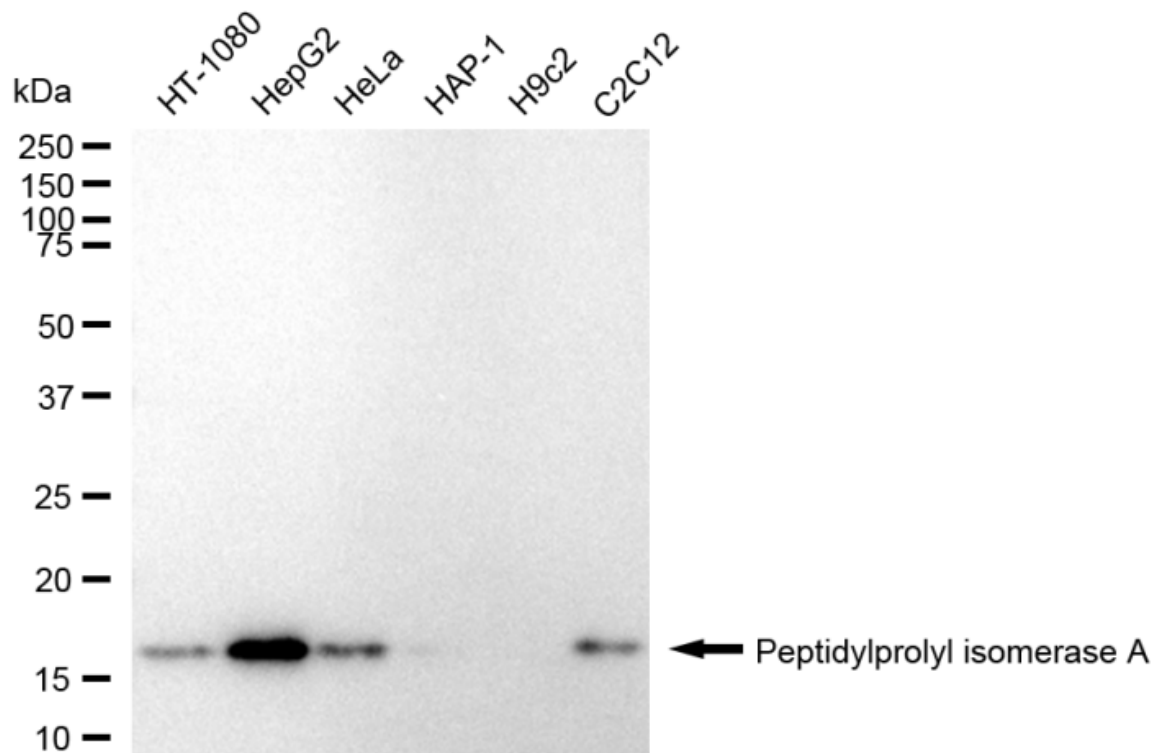
For general and specific antibody protocols please visit our website. Read all instructions before using this product.



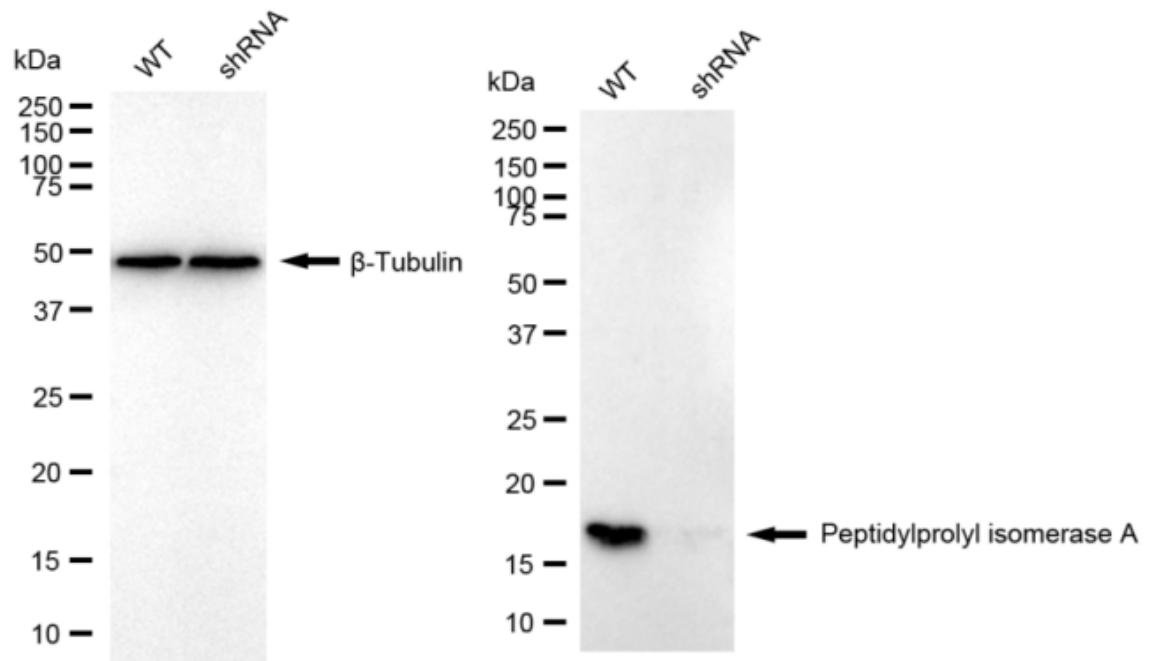
Flow cytometric analysis of Peptidylprolyl isomerase A expression in HepG2 cells using anti-Peptidylprolyl isomerase A antibody 1:2,000. Green, isotype control; red, Peptidylprolyl isomerase A.



Immunocytochemical staining of HepG2 cells with anti-Peptidylprolyl isomerase A antibody 1:1,000. Nuclei were stained blue with DAPI; Peptidylprolyl isomerase A was stained magenta with Alexa Fluor® 647. Images were taken using Leica stellaris 5. Protein abundance based on laser Intensity and smart gain: Low. Scale bar: 20 μ m.



Western blotting analysis using anti-Peptidylprolyl isomerase A antibody 1:5,000 and HRP-conjugated goat anti-rabbit secondary antibody 1:20,000 respectively. Image was developed using FeQ™ ECL Substrate Kit .



Western blotting analysis using anti-peptidylprolyl isomerase A antibody 1:5,000 and HRP-conjugated goat anti-rabbit secondary antibody 1:20,000 respectively. Image was developed using NaQ™ ECL Substrate Kit .