



SunLong Biotech Co.,LTD  
Tel: 0086-571- 56623320 Fax:0086-571- 56623318  
E-mail:sales@sunlongbiotech.com  
www.sunlongbiotech.com

# **[KD-Validated] Anti-Inorganic Pyrophosphatase 1 Rabbit Monoclonal Antibody**

Cat No.: KD-10701

## **Aliases:**

PPA1; Inorganic Pyrophosphatase 1; Pyrophosphate Phospho-Hydrolase; SID6-8061; Ppase; PP1; PP; Cytosolic Inorganic Pyrophosphatase; Pyrophosphatase (Inorganic)1; Inorganic Diphosphatase 1; Inorganic Pyrophosphatase; EC 3.6.1.1; Epididymis Secretory Sperm Binding Protein Li 66p; Diphosphate Phosphohydrolase; Pyrophosphatase (Inorganic); Pyrophosphatase 1; HEL-S-66p; PPase

## **Background:**

UniProt Entry: [Q15181](#);NCBI Gene Entry: [5464](#)

## **Application Information**

Molecular Weight: Predicted, 33 kDa, observed, 33 kDa Clonality: Rabbit monoclonal antibody Clone ID: 24GB1365 Species Reactivity: Human, Mouse, Rat Applications Tested: Western Blotting (WB), Flow Cytometry (FCM)

## **Immunogen**

A synthesized peptide derived from human Pyrophosphatase 1

## **Isotype**

Rabbit IgG

## **Storage Buffer**

Supplied in PBS (pH 7.4) containing 50% glycerol, and 0.02% sodium azide.

#### Storage

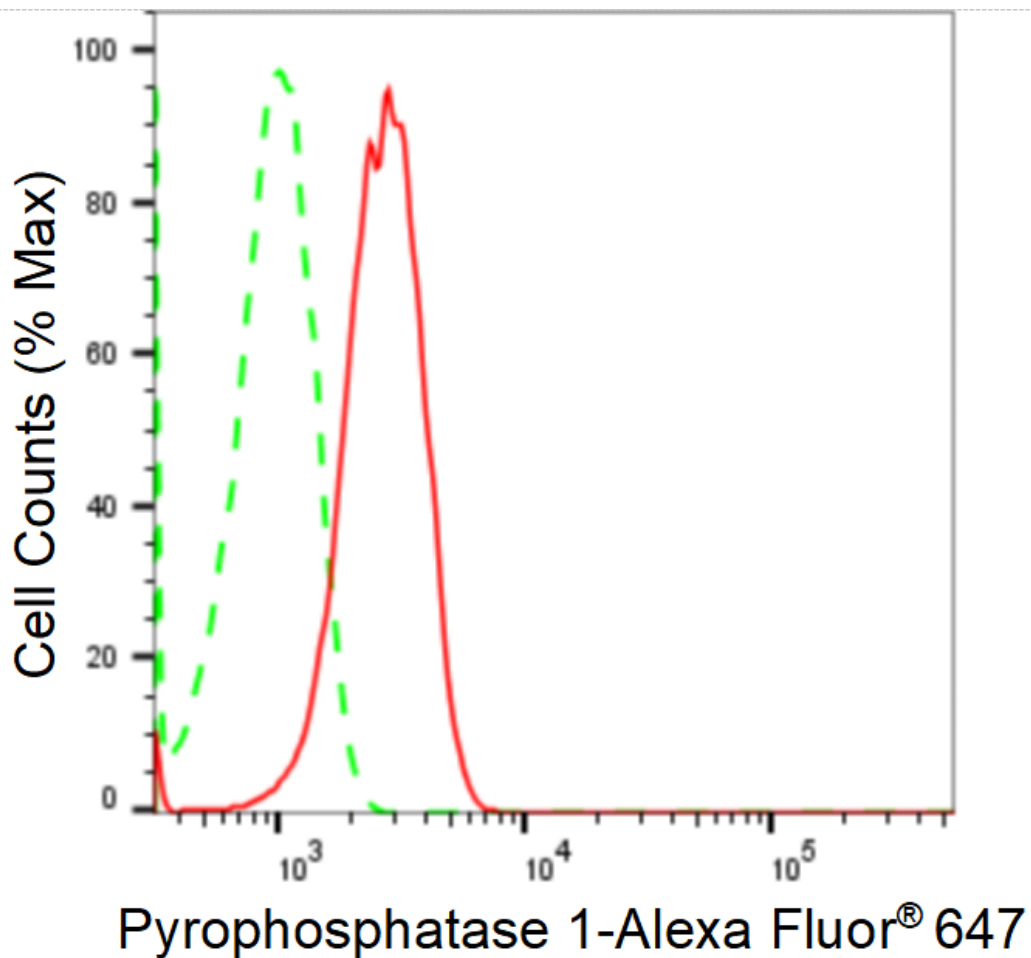
Store at -20 °C for one year.

#### Recommended Dilutions

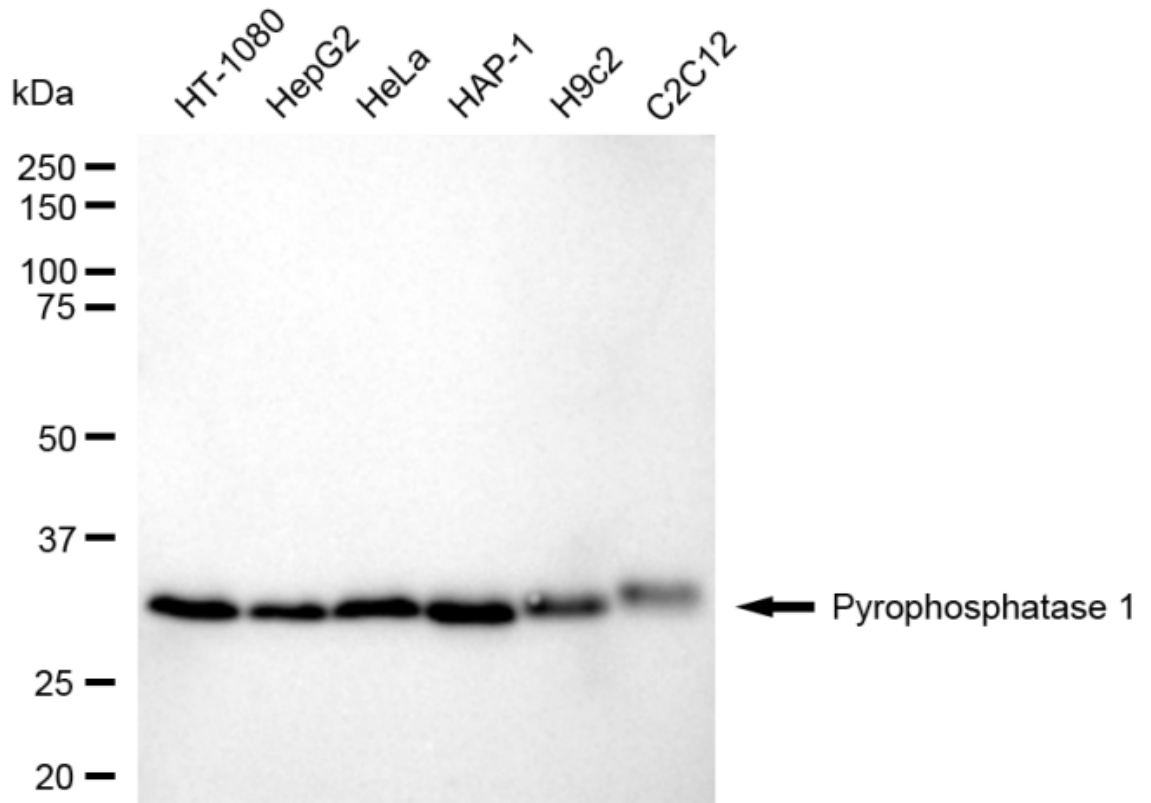
Western Blotting (WB): 1:1,000-1:5,000 Flow Cytometry (FCM): 1:2,000

#### Protocols

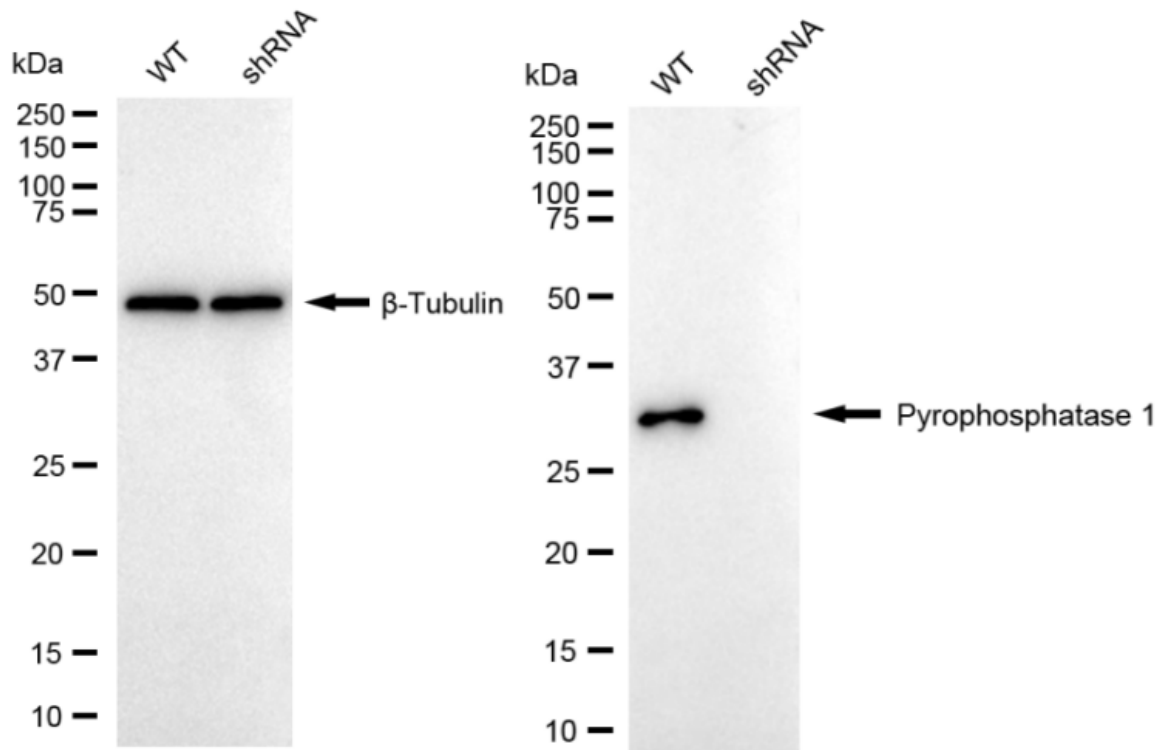
For general and specific antibody protocols please visit our website. Read all instructions before using this product.



Flow cytometric analysis of Pyrophosphatase 1 expression in HT-1080 cells using anti-Pyrophosphatase 1 antibody 1:2,000. Green, isotype control; red, Pyrophosphatase 1.



Western blotting analysis using anti-Pyrophosphatase 1 antibody 1:5,000 and HRP-conjugated goat anti-rabbit secondary antibody 1:20,000 respectively. Image was developed using FeQ™ ECL Substrate Kit .



Western blotting analysis using anti-Pyrophosphatase 1 antibody 1:5,000 and HRP-conjugated goat anti-rabbit secondary antibody 1:20,000 respectively. Image was developed using NaQ<sup>TM</sup> ECL Substrate Kit .