



SunLong Biotech Co.,LTD
Tel: 0086-571- 56623320 Fax:0086-571- 56623318
E-mail:sales@sunlongbiotech.com
www.sunlongbiotech.com

[KD-Validated] Anti-DNA Polymerase gamma Rabbit Monoclonal Antibody

Cat No.: KD-10699

Aliases:

DNA Polymerase Gamma, Catalytic Subunit; POLG1; POLGA; Mitochondrial DNA Polymerase Catalytic Subunit; Polymerase (DNA) Gamma, Catalytic Subunit; Polymerase (DNA Directed), Gamma; DNA Polymerase Subunit Gamma-1; PolG-Alpha; EC 2.7.7.7; MDP1; Mitochondrial Polymerase Gamma Catalytic Subunit; MTDPS4A; MTDPS4B; MIRAS; SANDO; SCAE; PEO

Background:

UniProt Entry: [P54098](#);NCBI Gene Entry: [5428](#)

Application Information

Molecular Weight: Predicted, 140 kDa, observed, 140 kDa Clonality: Rabbit monoclonal antibody Clone ID: 24GB1085 Species Reactivity: Human, Mouse, Rat Applications Tested: Western Blotting (WB), Flow Cytometry (FCM), Immunocytochemistry (IC)

Immunogen

A synthesized peptide derived from human DNA Polymerase gamma

Isotype

Rabbit IgG

Storage Buffer

Supplied in PBS (pH 7.4) containing 50% glycerol, and 0.02% sodium azide.

Storage

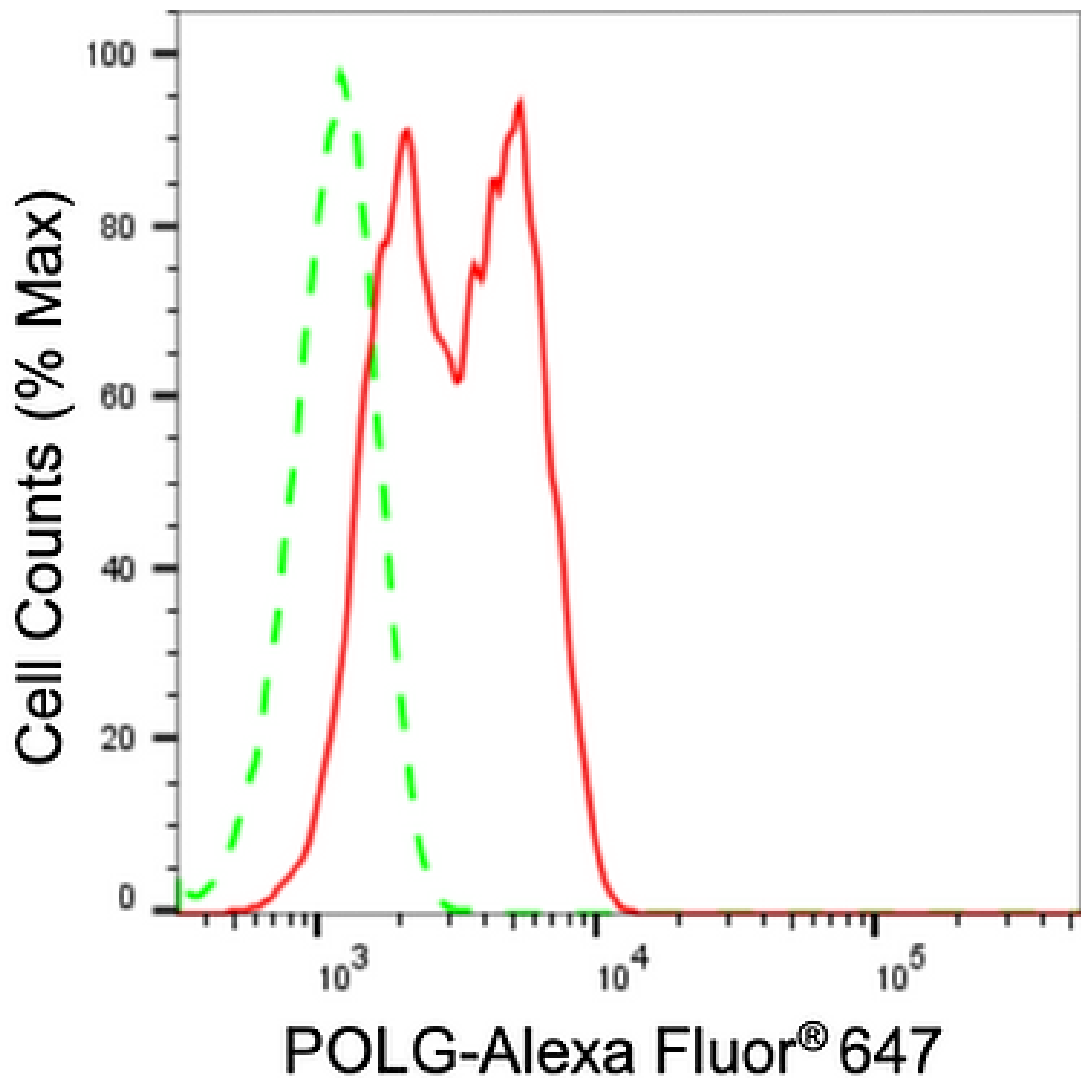
Store at -20 °C for one year.

Recommended Dilutions

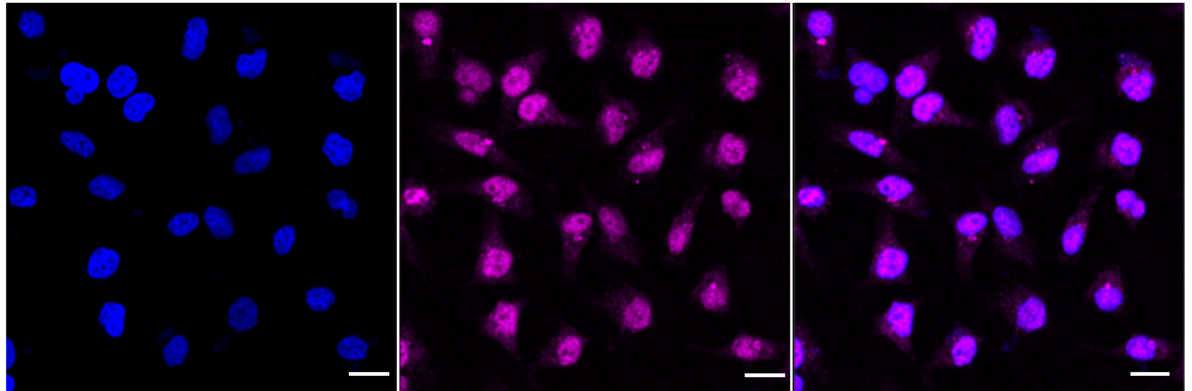
Western Blotting (WB): 1:1,000-1:5,000 Flow Cytometry (FCM): 1:2,000
Immunocytochemistry (IC): 1:1,000

Protocols

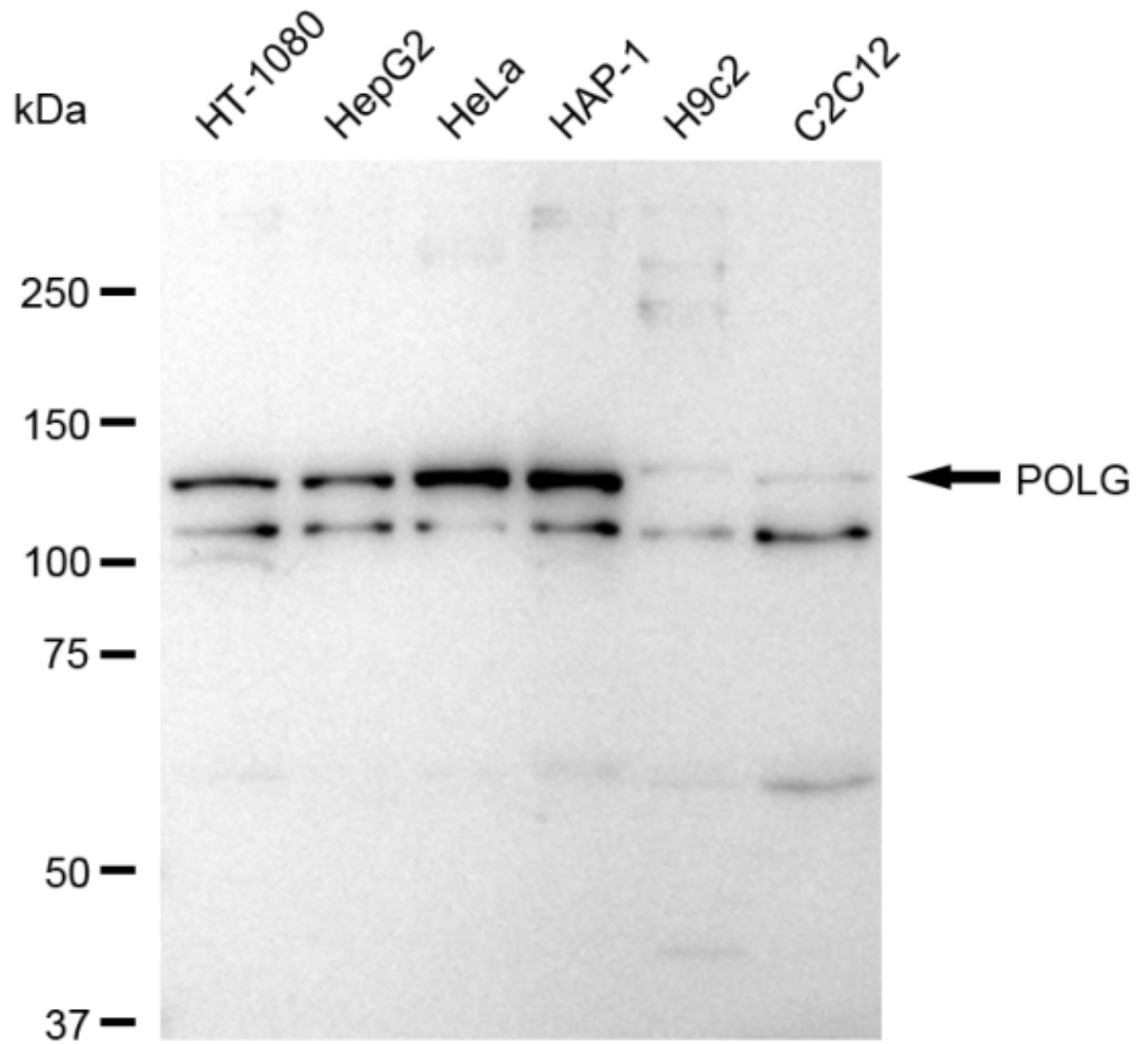
For general and specific antibody protocols please visit our website. Read all instructions before using this product.



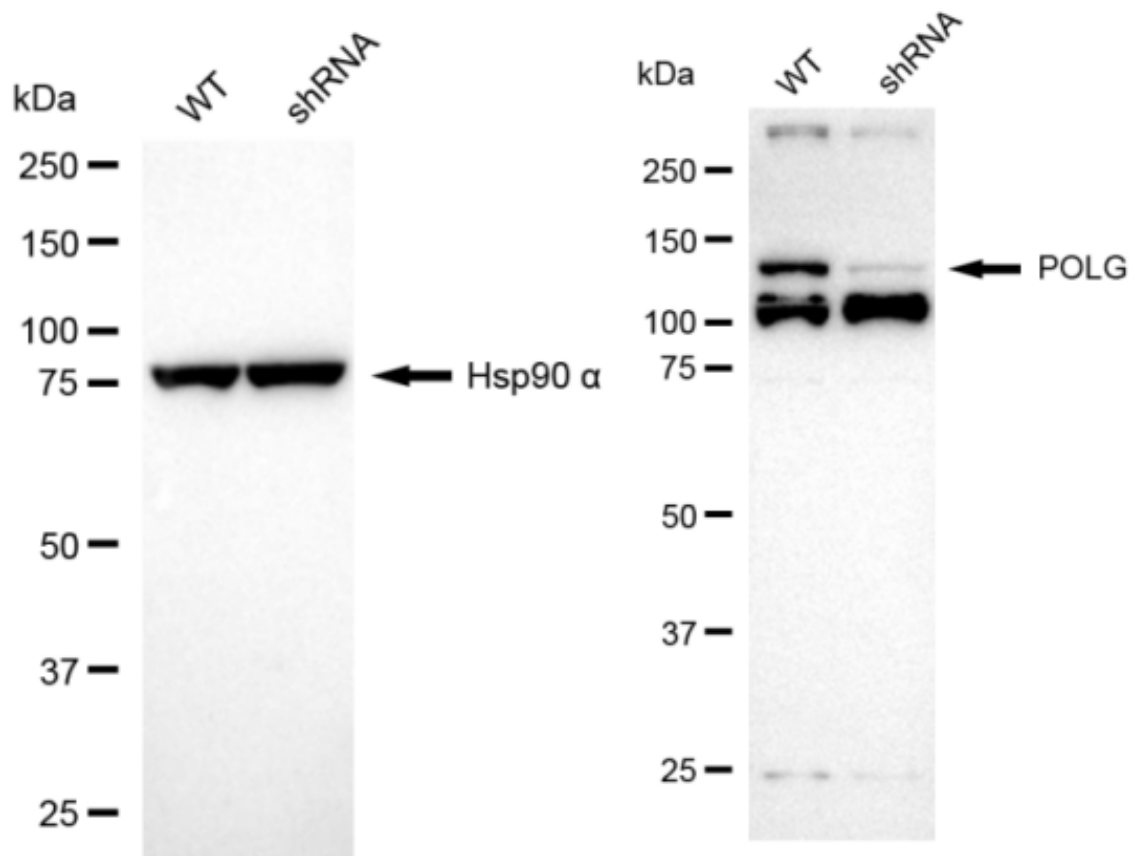
Flow cytometric analysis of POLG expression in HeLa cells using POLG antibody 1:2,000. Green, isotype control; red, POLG.



Immunocytochemical staining of HeLa cells with anti-POLG antibody 1:1,000. Nuclei were stained blue with DAPI; POLG was stained magenta with Alexa Fluor® 647. Images were taken using Leica stellaris 5. Protein abundance based on laser Intensity and smart gain:Medium . Scale bar: 20 μ m.



Western blotting analysis using anti-POLG antibody 1:5,000 and HRP-conjugated goat anti-rabbit secondary antibody 1:20,000 respectively. Image was developed using FeQ™ ECL Substrate Kit .



Western blotting analysis using anti-POLG antibody 1:5,000 and HRP-conjugated goat anti-rabbit secondary antibody 1:20,000 respectively. Image was developed using NaQ™ ECL Substrate Kit .