



SunLong Biotech Co.,LTD
Tel: 0086-571- 56623320 Fax:0086-571- 56623318
E-mail:sales@sunlongbiotech.com
www.sunlongbiotech.com

[KD-Validated] Anti-DNA Polymerase beta Rabbit Monoclonal Antibody

Cat No.: KD-10698

Aliases:

POLB; DNA Polymerase Beta; Polymerase (DNA Directed), Beta; 5'-Deoxyribose-Phosphate Lyase; Polymerase (DNA) Beta; 5'-DRP Lyase; AP Lyase; DNA Polymerase Beta Subunit; DNA Pol Beta; EC 4.2.99.18; EC 4.2.99.-; EC 2.7.7.7

Background:

UniProt Entry: [P06746](#);NCBI Gene Entry: [5423](#)

Application Information

Molecular Weight: Predicted, 38 kDa, observed, 38 kDa Clonality: Rabbit monoclonal antibody Clone ID: 24GB1475 Species Reactivity: Human, Mouse, Rat Applications Tested: Western Blotting (WB)

Immunogen

A synthesized peptide derived from human DNA polymerase beta

Isotype

Rabbit IgG

Storage Buffer

Supplied in PBS (pH 7.4) containing 50% glycerol, and 0.02% sodium azide.

Storage

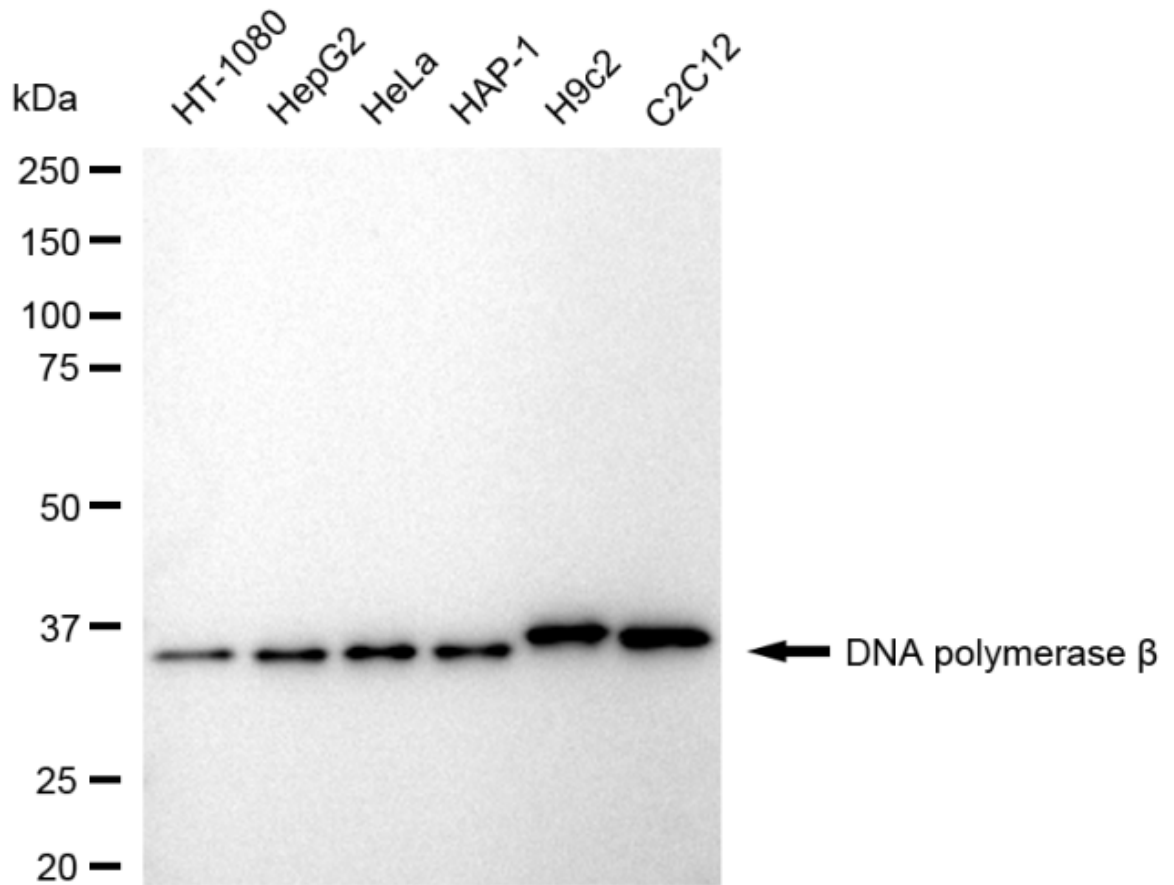
Store at -20 °C for one year.

Recommended Dilutions

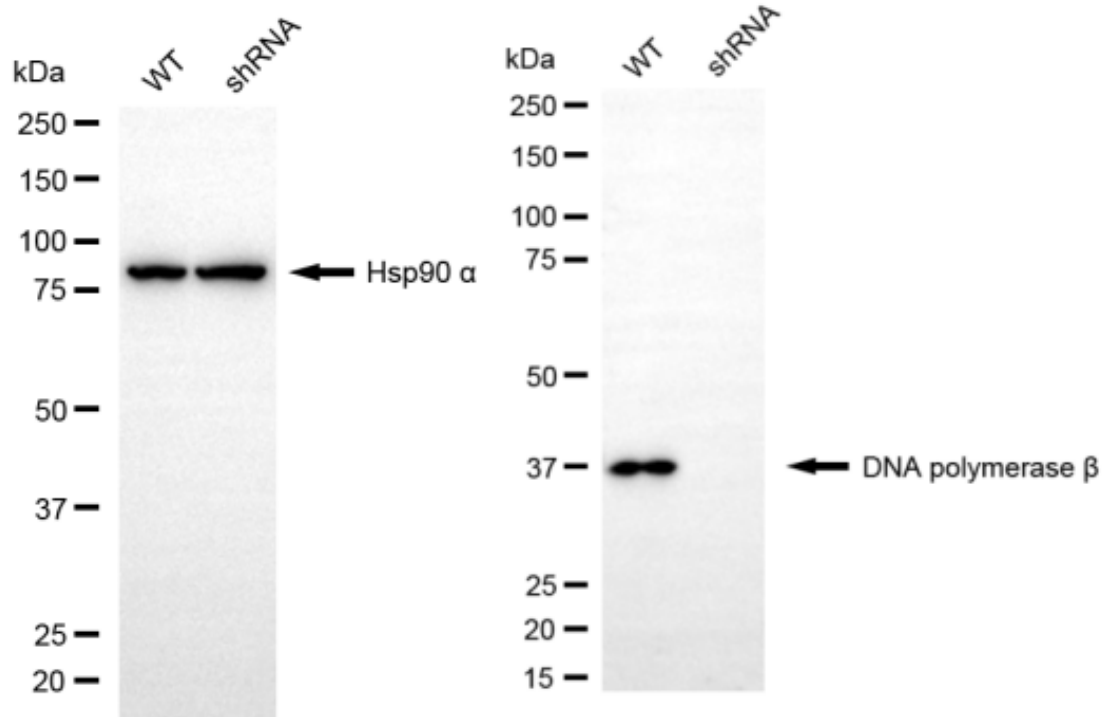
Western Blotting (WB): 1:1,000-1:5,000

Protocols

For general and specific antibody protocols please visit our website. Read all instructions before using this product.



Western blotting analysis using anti-DNA polymerase beta antibody 1:5,000 and HRP-conjugated goat anti-rabbit secondary antibody 1:20,000 respectively. Image was developed using FeQ™ ECL Substrate Kit .



Western blotting analysis using anti-DNA Polymerase beta antibody 1:5,000 and HRP-conjugated goat anti-rabbit secondary antibody 1:20,000 respectively. Image was developed using NaQ™ ECL Substrate Kit .