



SunLong Biotech Co.,LTD  
Tel: 0086-571- 56623320 Fax:0086-571- 56623318  
E-mail:sales@sunlongbiotech.com  
www.sunlongbiotech.com

## **[KD-Validated] Anti-Plexin A1 Rabbit Monoclonal Antibody**

Cat No.: KD-10696

### **Aliases:**

Plexin A1; NOV; PLXN1; Semaphorin Receptor NOV; PLEXIN-A1; Plexin-A1; Plexin 1; DWOPNED; NOV P

### **Background:**

UniProt Entry: [Q9UIW2](#);NCBI Gene Entry: [5361](#)

### **Application Information**

Molecular Weight: Predicted, 211 kDa, observed, 240 kDa Clonality: Rabbit monoclonal antibody Clone ID: 24GB1245 Species Reactivity: Human, Mouse, Rat Applications Tested: Western Blotting (WB)

### **Immunogen**

A synthesized peptide derived from human Plexin A1

### **Isotype**

Rabbit IgG

### **Storage Buffer**

Supplied in PBS (pH 7.4) containing 50% glycerol, and 0.02% sodium azide.

### **Storage**

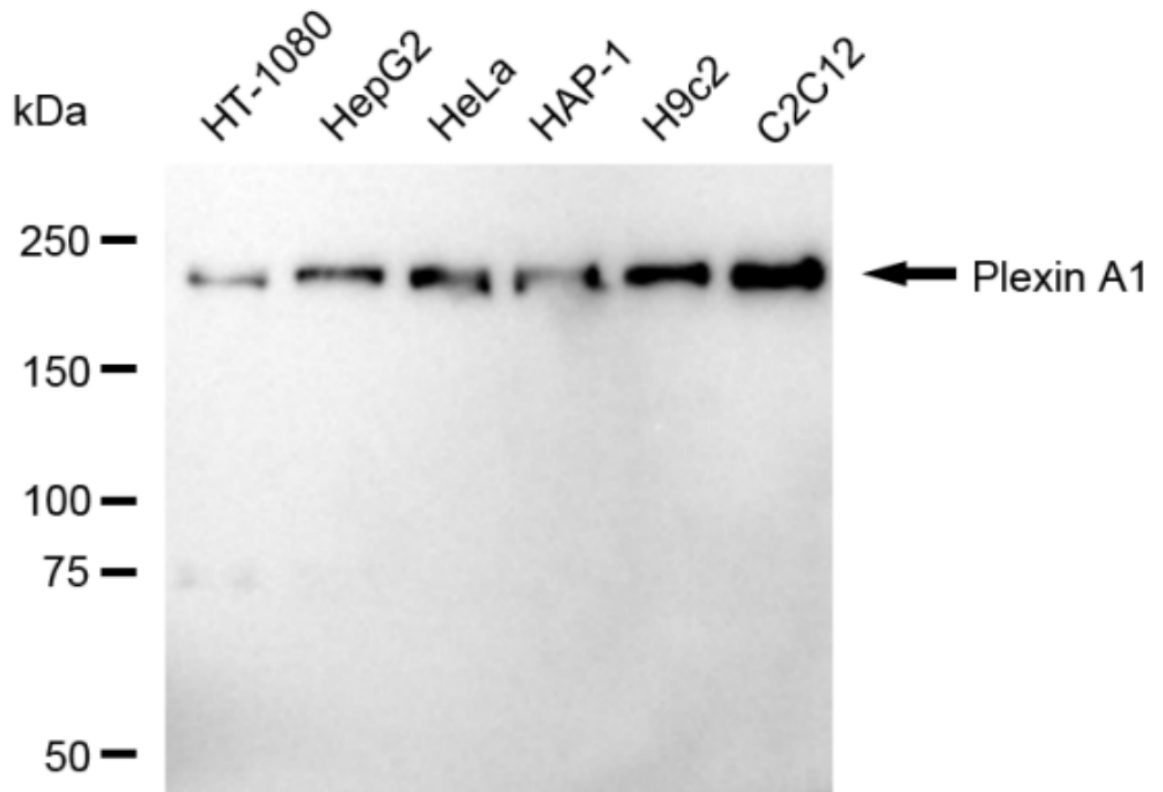
Store at -20 °C for one year.

**Recommended Dilutions**

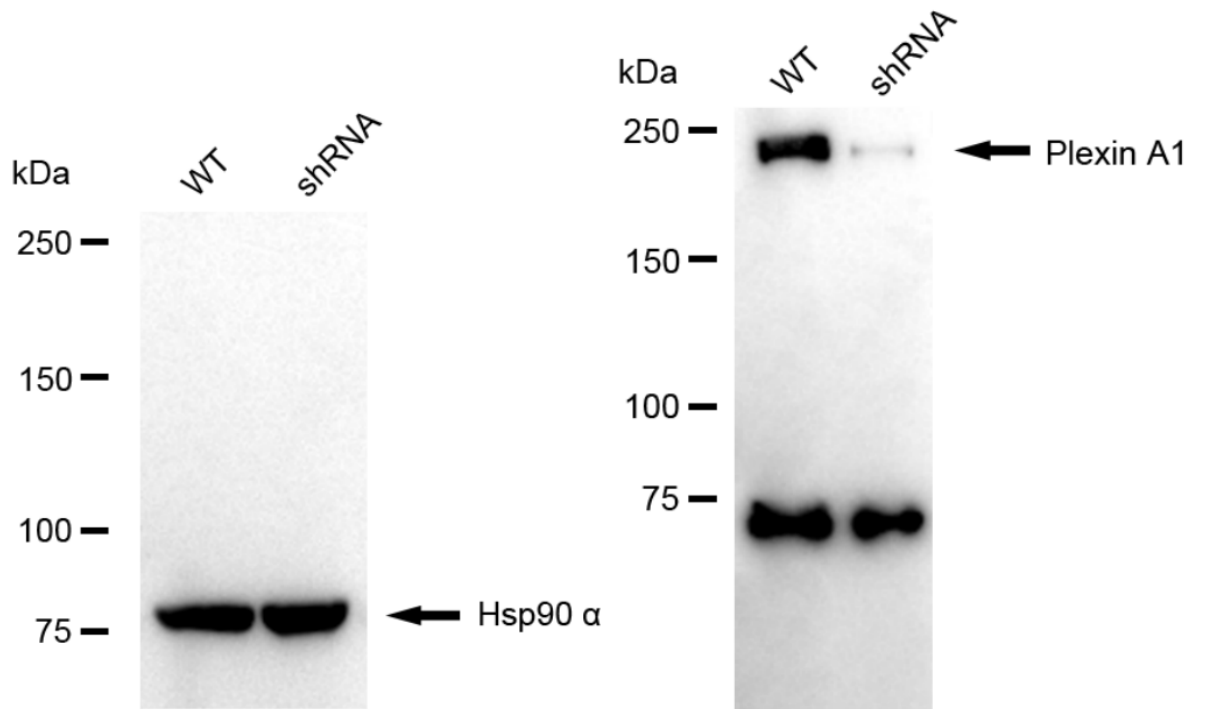
Western Blotting (WB): 1:1,000-1:5,000

**Protocols**

For general and specific antibody protocols please visit our website. Read all instructions before using this product.



Western blotting analysis using anti-Plexin A1 antibody 1:5,000 and HRP-conjugated goat anti-rabbit secondary antibody 1:20,000 respectively. Image was developed using FeQ™ ECL Substrate Kit .



Western blotting analysis using anti-plexin A1 antibody 1:5,000 and HRP-conjugated goat anti-rabbit secondary antibody 1:20,000 respectively. Image was developed using NaQ™ ECL Substrate Kit .