



SunLong Biotech Co.,LTD
Tel: 0086-571- 56623320 Fax:0086-571- 56623318
E-mail:sales@sunlongbiotech.com
www.sunlongbiotech.com

[KD-Validated] Anti-Phospholipid Scramblase 1 Rabbit Monoclonal Antibody

Cat No.: KD-10694

Aliases:

Phospholipid Scramblase 1; MMTRA1B; Ca(2+)-Dependent Phospholipid Scramblase 1; Erythrocyte Phospholipid Scramblase; Mg(2+)-Dependent Nuclease; PL Scramblase 1; EC 3.1.-.-; MmTRA1b

Background:

UniProt Entry: [O15162](#);NCBI Gene Entry: [5359](#)

Application Information

Molecular Weight: Predicted, 35 kDa, observed, 35 kDa Clonality: Rabbit monoclonal antibody Clone ID: 24GB1550 Species Reactivity: Human, Mouse, Rat Applications Tested: Western Blotting (WB), Flow Cytometry (FCM)

Immunogen

A synthesized peptide derived from human Scramblase 1

Isotype

Rabbit IgG

Storage Buffer

Supplied in PBS (pH 7.4) containing 50% glycerol, and 0.02% sodium azide.

Storage

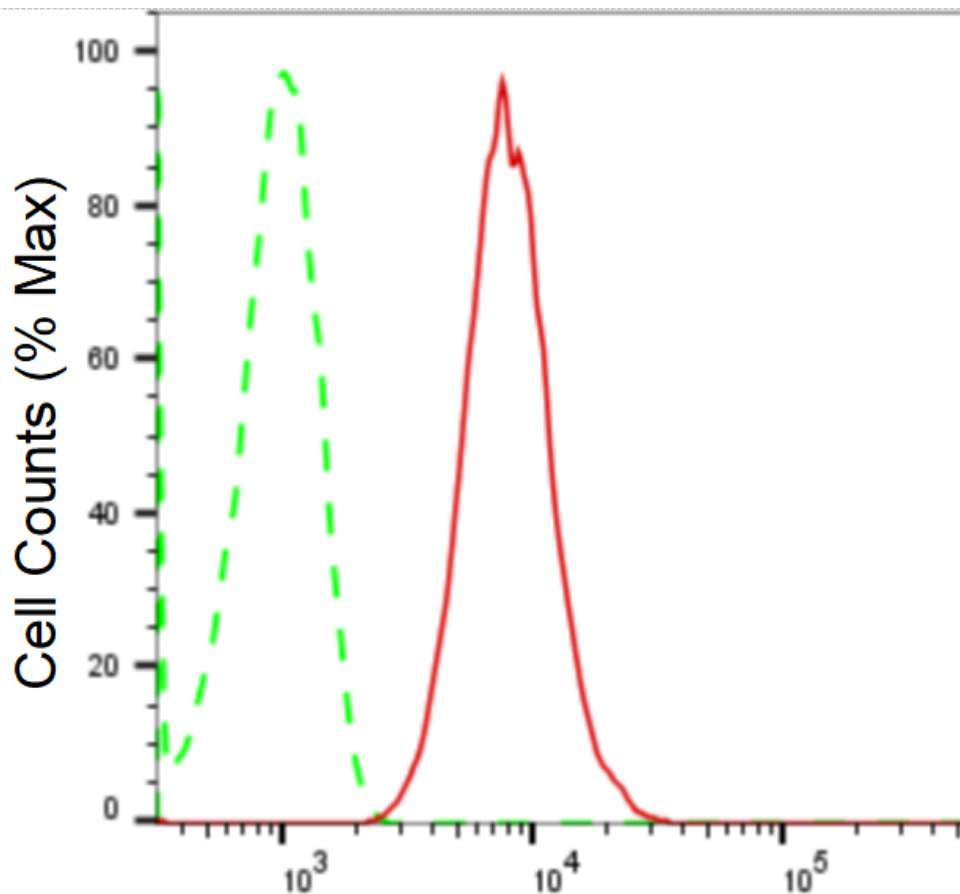
Store at -20 °C for one year.

Recommended Dilutions

Western Blotting (WB): 1:1,000-1:5,000 Flow Cytometry (FCM): 1:2,000

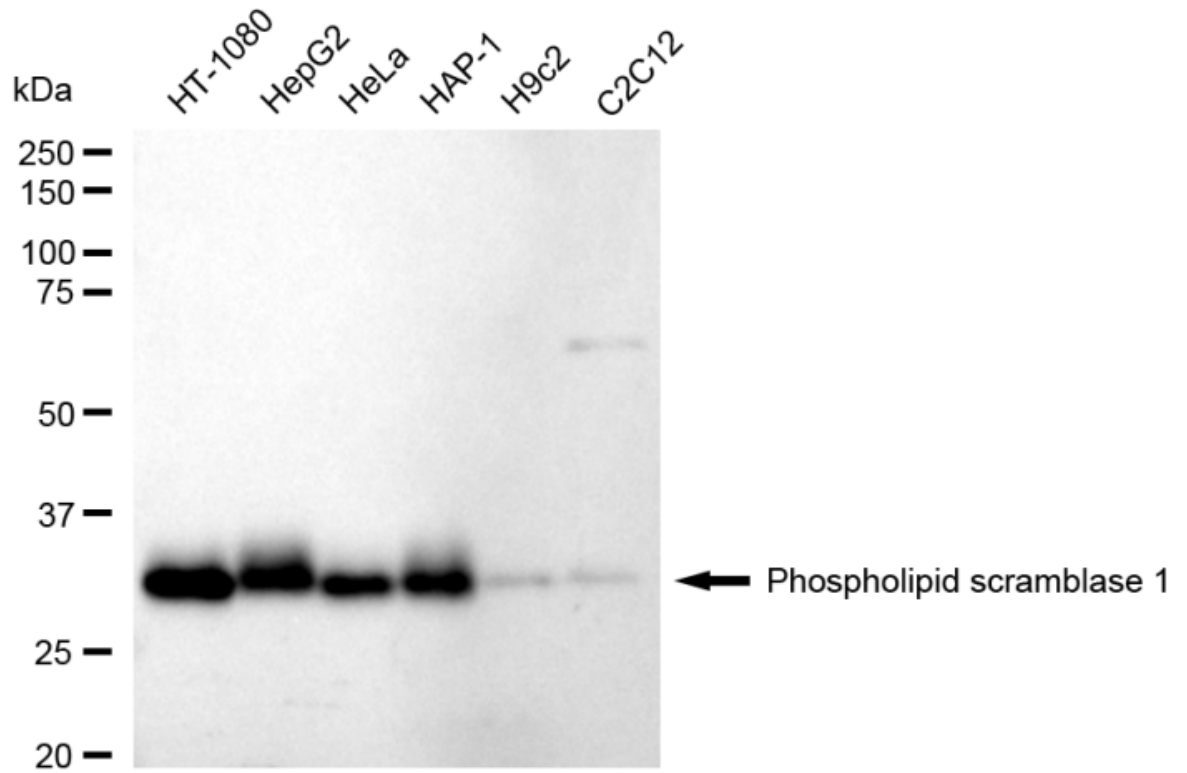
Protocols

For general and specific antibody protocols please visit our website. Read all instructions before using this product.

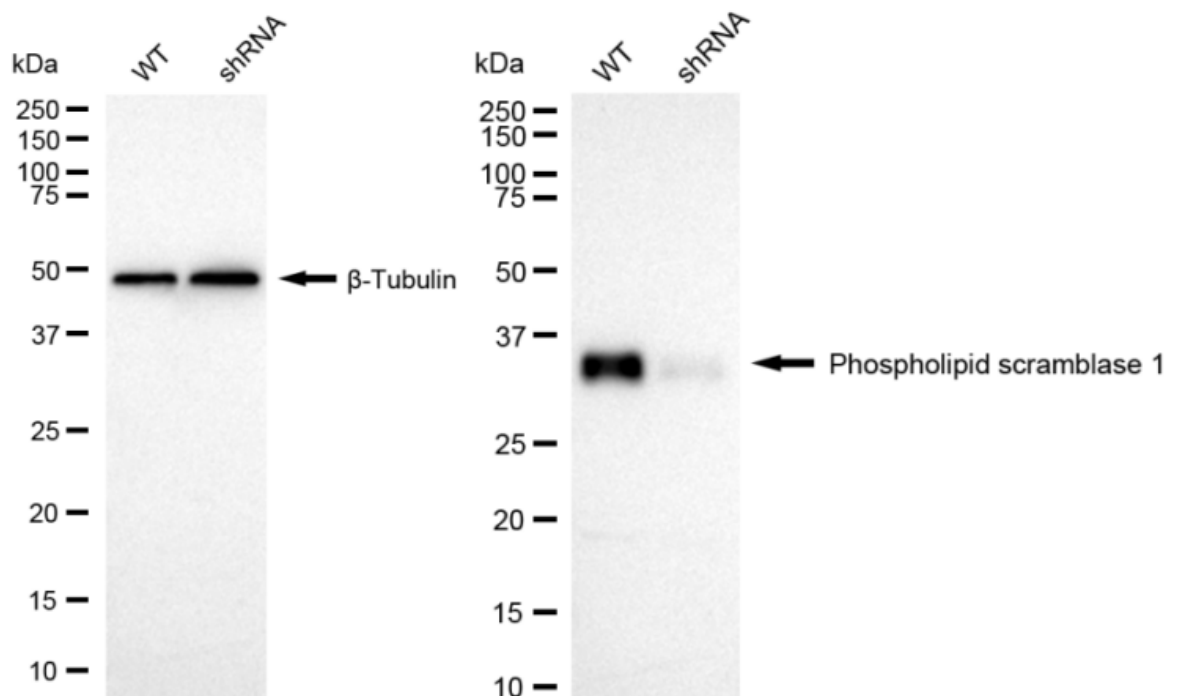


Phospholipid scramblase 1-Alexa Fluor[®] 647

Flow cytometric analysis of Phospholipid scramblase 1 expression in HT-1080 cells using anti-Phospholipid scramblase 1 antibody 1:2,000. Green, isotype control; red, Phospholipid scramblase 1.



Western blotting analysis using anti-Phospholipid scramblase 1 antibody 1:5,000 and HRP-conjugated goat anti-rabbit secondary antibody 1:20,000 respectively. Image was developed using FeQ™ ECL Substrate Kit .



Western blotting analysis using anti-Phospholipid scramblase 1 antibody 1:5,000 and HRP-conjugated goat anti-rabbit secondary antibody 1:20,000 respectively. Image was developed using NaQ™ ECL Substrate Kit .