



SunLong Biotech Co.,LTD  
Tel: 0086-571- 56623320 Fax:0086-571- 56623318  
E-mail:sales@sunlongbiotech.com  
www.sunlongbiotech.com

## **[KD-Validated] Anti-Phospho-PLCB3 (S537) Rabbit Monoclonal Antibody**

Cat No.: KD-10693

### **Aliases:**

Phospholipase C Beta 3; 1-Phosphatidylinositol 4,5-Bisphosphate Phosphodiesterase Beta-3; Phospholipase C, Beta 3 (Phosphatidylinositol-Specific); Phosphoinositide Phospholipase C-Beta-3; EC 3.1.4.11; Phospholipase C-Beta-3; PLC Beta 3; PLC-Beta-3; SMDCD

### **Background:**

UniProt Entry: [Q01970](#);NCBI Gene Entry: [5331](#)

### **Application Information**

Molecular Weight: Predicted, 139 kDa, observed, 150 kDa Clonality: Rabbit monoclonal antibody Clone ID: 24GB1260 Species Reactivity: Human, Mouse, Rat Applications Tested: Western Blotting (WB)

### **Immunogen**

A synthesized peptide derived from human Phospho-PLCB3 (S537)

### **Isotype**

Rabbit IgG

### **Storage Buffer**

Supplied in PBS (pH 7.4) containing 50% glycerol, and 0.02% sodium azide.

### Storage

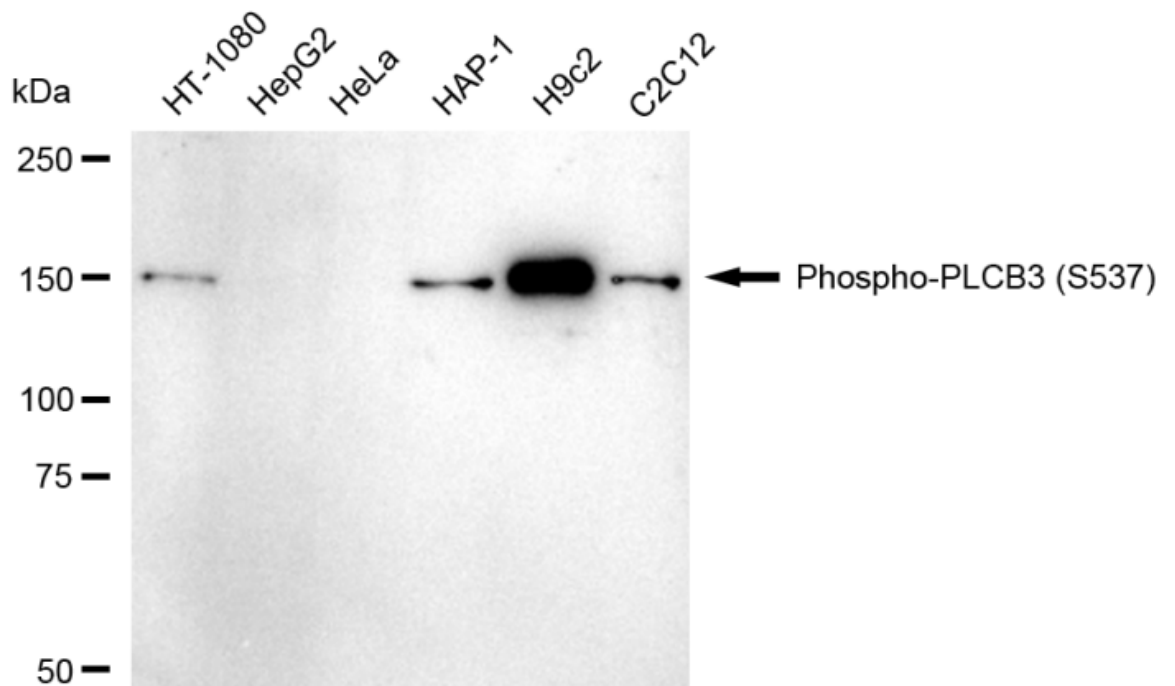
Store at -20 °C for one year.

### Recommended Dilutions

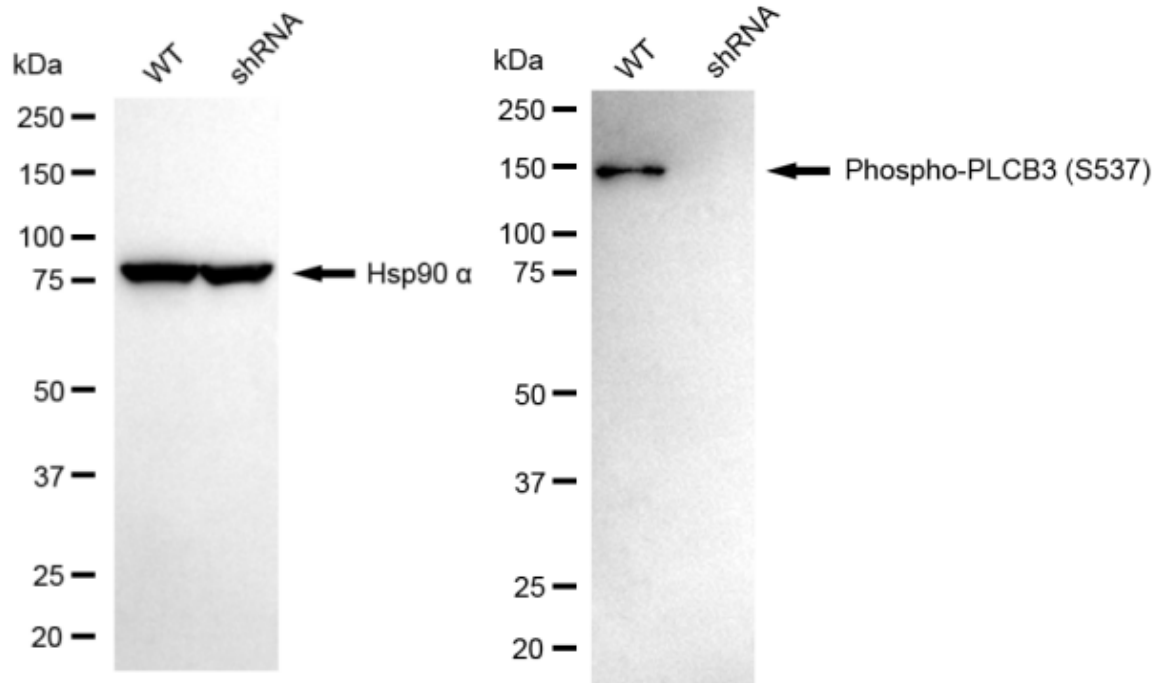
Western Blotting (WB): 1:1,000-1:5,000

### Protocols

For general and specific antibody protocols please visit our website. Read all instructions before using this product.



Western blotting analysis using anti-Phospho-PLCB3 (S537) antibody 1:5,000 and HRP-conjugated goat anti-rabbit secondary antibody 1:20,000 respectively. Image was developed using FeQ™ ECL Substrate Kit .



Western blotting analysis using anti-phospho-PLCB3 (S537) antibody 1:5,000 and HRP-conjugated goat anti-rabbit secondary antibody 1:20,000 respectively. Image was developed using NaQ<sup>TM</sup> ECL Substrate Kit .