



SunLong Biotech Co.,LTD  
Tel: 0086-571- 56623320 Fax:0086-571- 56623318  
E-mail:sales@sunlongbiotech.com  
www.sunlongbiotech.com

## **[KD-Validated] Anti-Phospholipase A2 activating protein Rabbit Monoclonal Antibody**

Cat No.: KD-10692

### **Aliases:**

PLAA; Phospholipase A2 Activating Protein; PLA2P; PLAP; DOA1; Phospholipase A-2-Activating Protein; FLJ11281; FLJ12699; DOA1 Homolog (S. Cerevisiae); DOA1 Homolog; NDMSBA

### **Background:**

UniProt Entry: [Q9Y263](#);NCBI Gene Entry: [9373](#)

### **Application Information**

Molecular Weight: Predicted, 87 kDa, observed, 75 kDa Clonality: Rabbit monoclonal antibody Clone ID: 23GB2560 Species Reactivity: Human Applications: Western Blotting (WB), Flow Cytometry (FCM), Immunocytochemistry (IC)

### **Immunogen**

A synthesized peptide derived from human PLAP

### **Isotype**

Rabbit IgG

### **Storage Buffer**

Supplied in PBS (pH 7.4) containing 50% glycerol, and 0.02% sodium azide.

### Storage

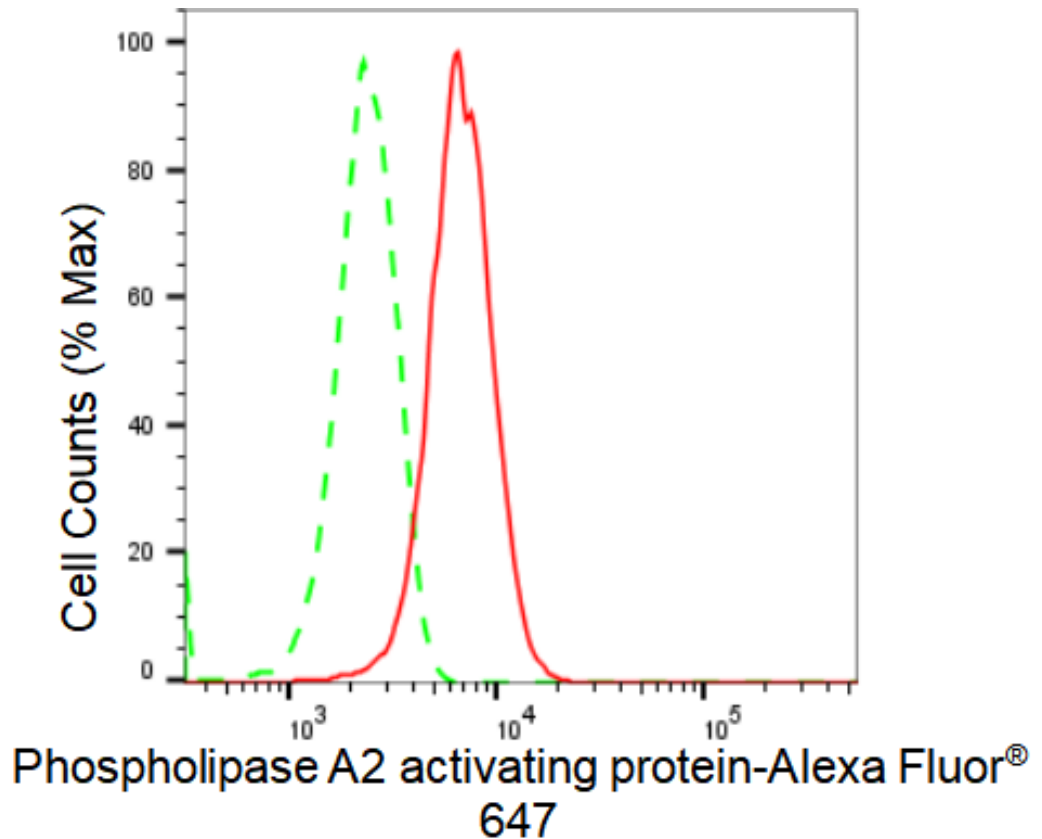
Store at -20 °C for one year.

### Recommended Dilutions

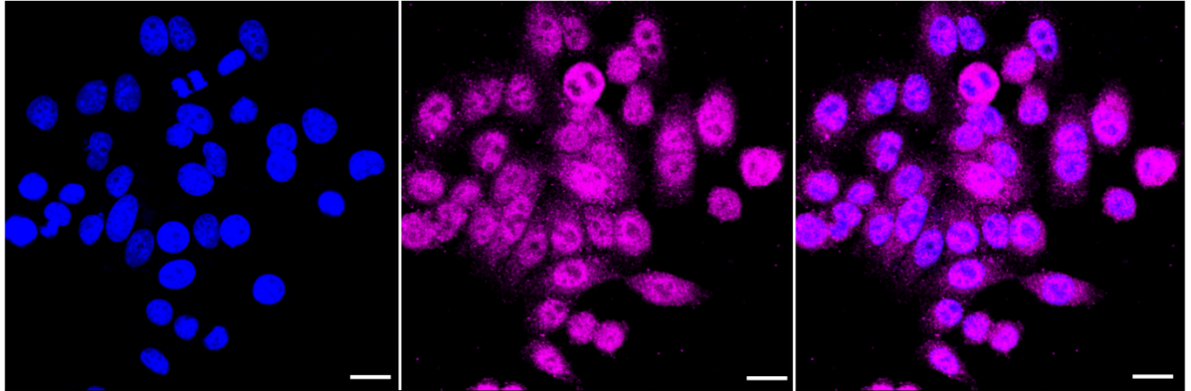
Western Blotting (WB): 1:1,000-1:5,000 Flow Cytometry (FCM): 1:2,000  
Immunocytochemistry (IC): 1:1,000

### Protocols

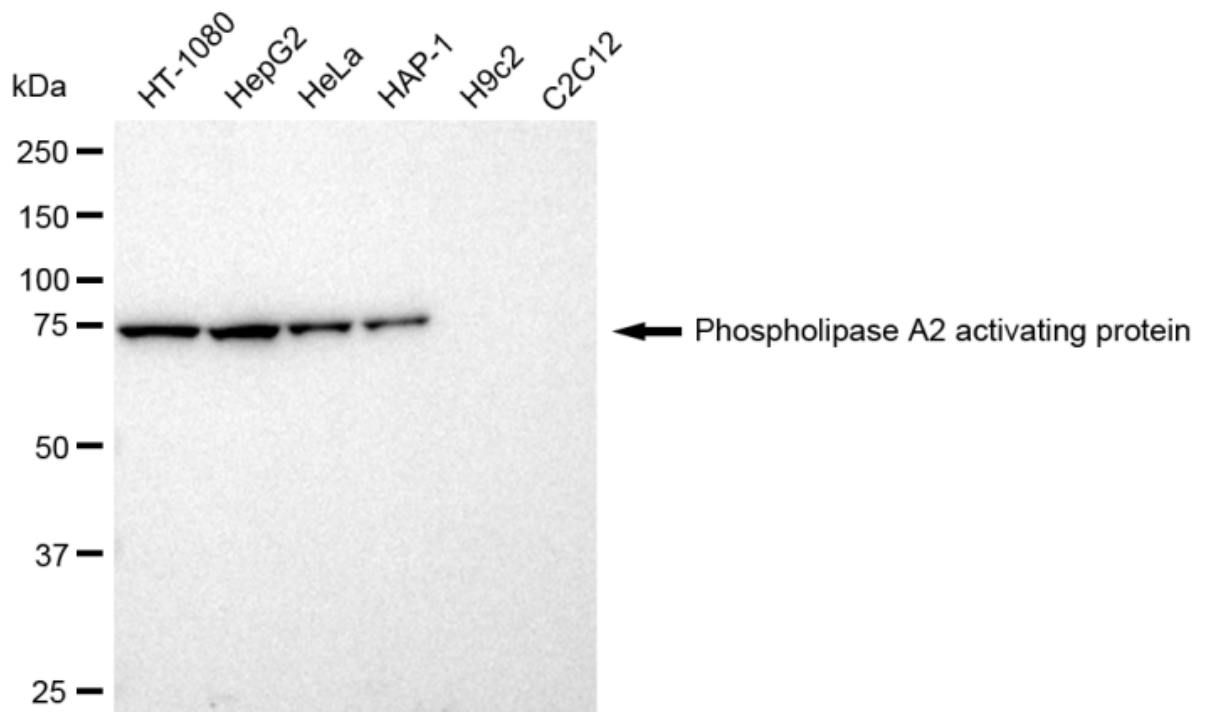
For general and specific antibody protocols please visit our website. Read all instructions before using this product.



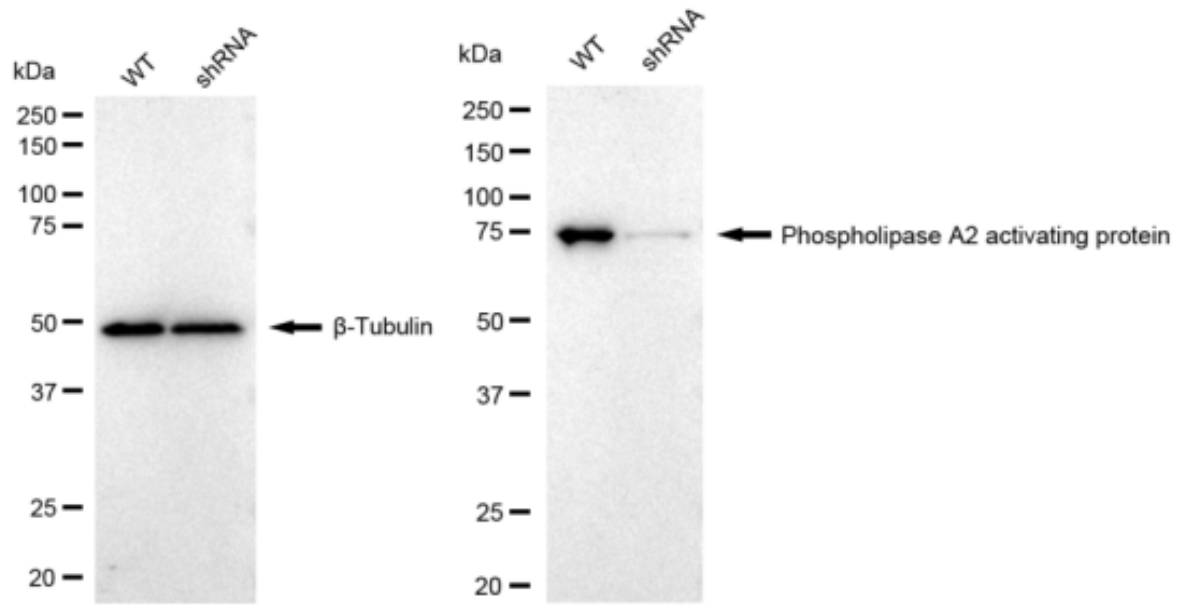
Flow cytometric analysis of Phospholipase A2 activating protein expression in HepG2 cells using Phospholipase A2 activating protein antibody 1:2,000. Green, isotype control; red, Phospholipase A2 activating protein.



Immunocytochemical staining of HepG2 cells with Phospholipase A2 activating protein antibody 1:1,000. Nuclei were stained blue with DAPI; Phospholipase A2 activating protein was stained magenta with Alexa Fluor® 647. Images were taken using Leica stellaris 5. Protein abundance based on laser Intensity and smart gain: Medium. Scale bar: 20  $\mu$ m.



Western blotting analysis using anti-Phospholipase A2 activating protein antibody 1:5,000 and HRP-conjugated goat anti-rabbit secondary antibody 1:20,000 respectively. Image was developed using FeQ™ ECL Substrate Kit .



Western blotting analysis using anti-Phospholipase A2 activating protein antibody 1:5000 and HRP-conjugated goat anti-rabbit secondary antibody 1:20000 respectively. Image was developed using FeQ™ ECL Substrate Kit .