



SunLong Biotech Co.,LTD
Tel: 0086-571- 56623320 Fax:0086-571- 56623318
E-mail:sales@sunlongbiotech.com
www.sunlongbiotech.com

[KD-Validated] Anti-PI3 Kinase p110 beta Rabbit Monoclonal Antibody

Cat No.: KD-10690

Aliases:

Phosphatidylinositol-4,5-Bisphosphate 3-Kinase; Catalytic SubunitBeta; PI3K; PIK3C1; PI3KBETA; Phosphoinositide-3-Kinase; Catalytic; Beta Polypeptide; Phosphatidylinositol 4,5-Bisphosphate 3-Kinase Catalytic Subunit Beta Isoform; Phosphatidylinositol 4,5-Bisphosphate 3-Kinase 110 KDa Catalytic Subunit Beta; Phosphatidylinositol-4,5-Bisphosphate 3-Kinase 110 KDa Catalytic Subunit Beta; PtdIns-3-Kinase Subunit Beta; PI3-Kinase P110 Subunit Beta; PtdIns-3-Kinase Subunit P110-Beta; PtdIns-3-Kinase P110; PI3K-beta; PI3Kbeta; PI3-Kinase Subunit Beta; p110beta; EC 2.7.1.153; PI3KCB; P110BETA; EC 2.7.1

Background:

UniProt Entry: [P42338](#);NCBI Gene Entry: [5291](#)

Application Information

Molecular Weight: Predicted, 123 kDa, observed, 110 kDa Clonality: Rabbit monoclonal antibody Clone ID: 23GB1035 Species Reactivity: Human Applications Used: Western Blotting (WB), Flow Cytometry (FCM)

Immunogen

A synthesized peptide derived from human PI3 Kinase p110 beta

Isotype

Rabbit IgG

Storage Buffer

Supplied in PBS (pH 7.4) containing 50% glycerol, and 0.02% sodium azide.

Storage

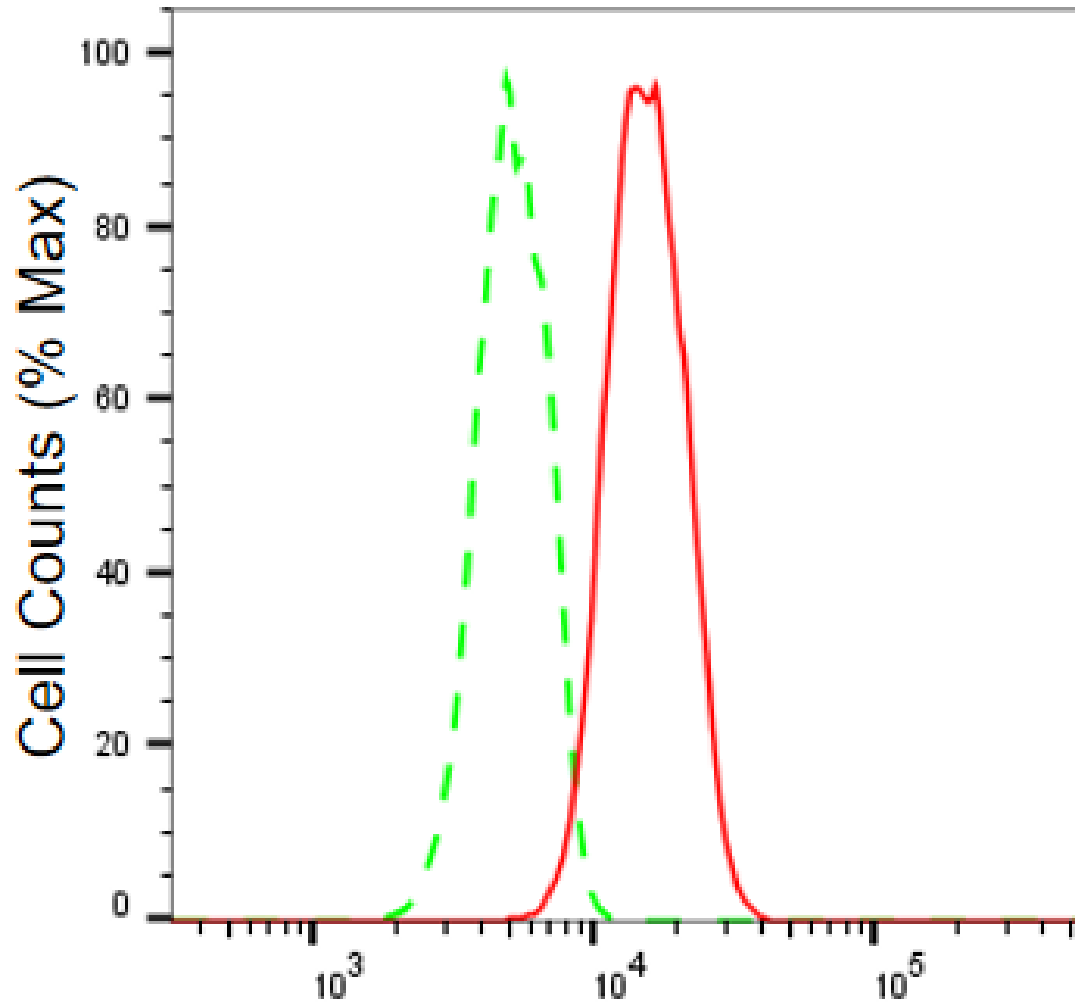
Store at -20 °C for one year.

Recommended Dilutions

Western Blotting (WB): 1:1,000-1:5,000 Flow Cytometry (FCM): 1:2,000

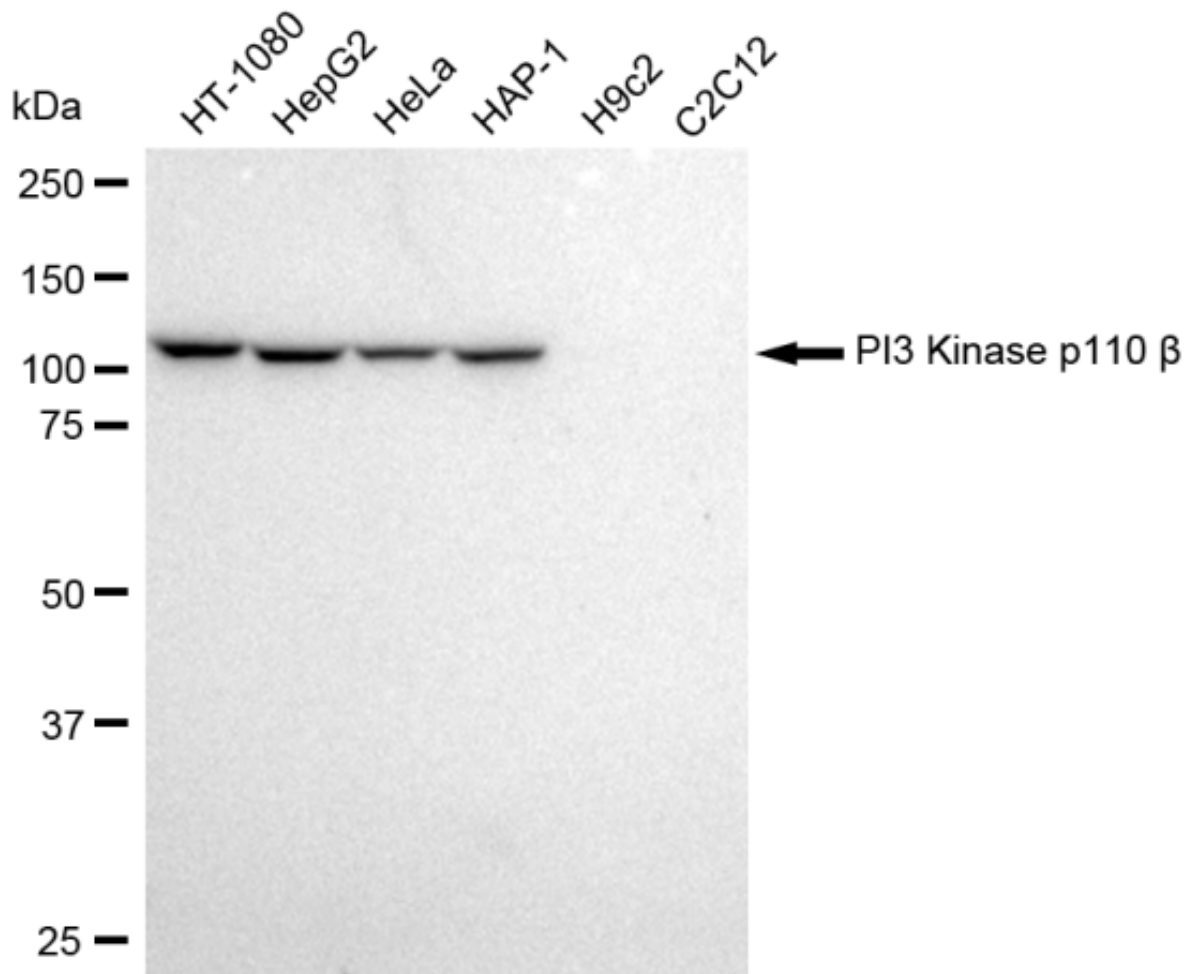
Protocols

For general and specific antibody protocols please visit our website. Read all instructions before using this product.

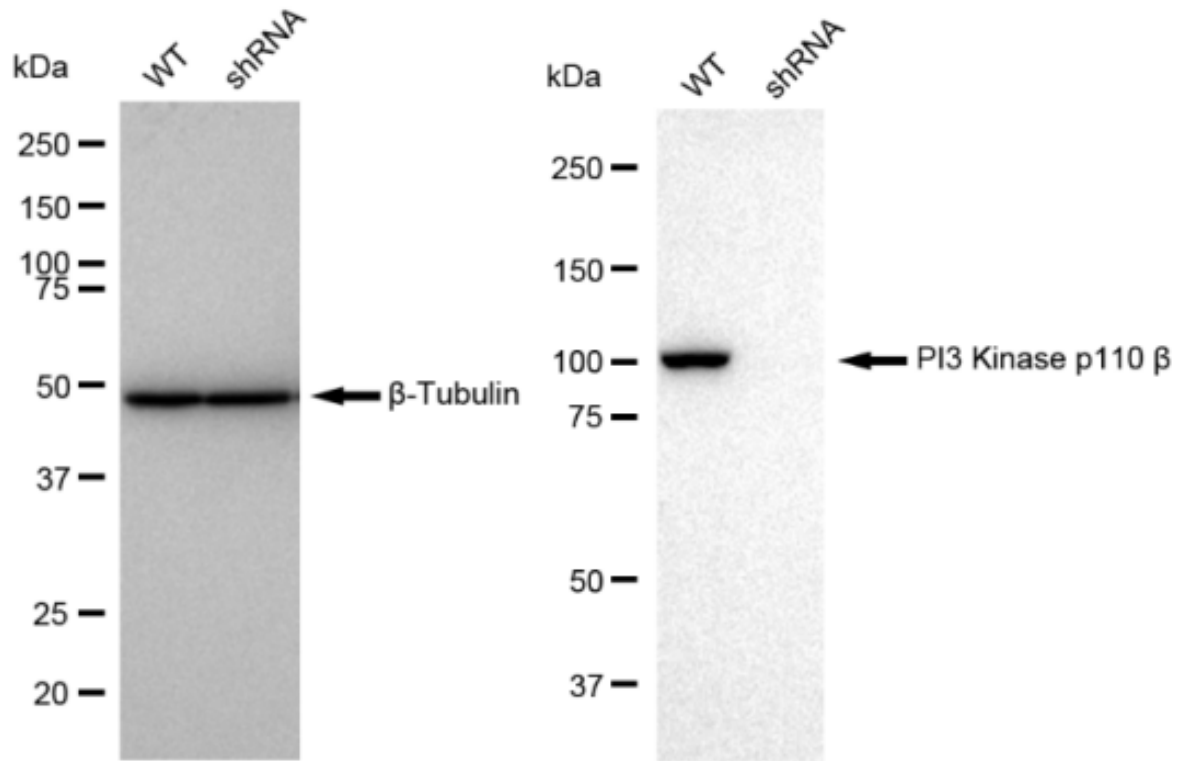


PI3 Kinase p110 beta-Alexa Fluor® 647

Flow cytometric analysis of PI3 Kinase p110 beta expression in HT-1080 cells using PI3 Kinase p110 beta antibody 1:2,000. Green, isotype control; red, PI3 Kinase p110 beta.



Western blotting analysis using anti-PI3 Kinase p110 beta antibody 1:5,000 and HRP-conjugated goat anti-rabbit secondary antibody 1:20,000 respectively. Image was developed using FeQ™ ECL Substrate Kit .



Western blotting analysis using anti-PI3 Kinase p110 beta antibody 1:5,000 and HRP-conjugated goat anti-rabbit secondary antibody 1:20,000 respectively. Image was developed using FeQ™ ECL Substrate Kit .