



SunLong Biotech Co.,LTD
Tel: 0086-571- 56623320 Fax:0086-571- 56623318
E-mail:sales@sunlongbiotech.com
www.sunlongbiotech.com

[KD-Validated] Anti-PIK3C3 Rabbit Monoclonal Antibody

Cat No.: KD-10689

Aliases:

Phosphatidylinositol 3-Kinase Catalytic Subunit Type 3; HVps34; Vps34;
Phosphatidylinositol 3-Kinase P100 Subunit; Vacuolar Protein Sorting 34 Homolog;
Phosphoinositide-3-Kinase, Class 3; PtdIns-3-Kinase Type 3; PI3-Kinase Type 3; EC
2.7.1.137; PI3K Type 3; Phosphatidylinositol 3-Kinase, Catalytic Subunit Type 3;
Phosphoinositide-3-Kinase Class 3; EC 2.7.1; VPS34

Background:

UniProt Entry: [Q8NEB9](#);NCBI Gene Entry: [5289](#)

Application Information

Molecular Weight: Predicted, 102 kDa, observed, 100 kDa Clonality: Rabbit monoclonal antibody Clone ID: 24GB1150 Species Reaceivity: Human, Mouse Applicseions Tsted: Western Blotting (WB), Flow Cytometry (FCM), Immunocytochemistry (IC)

Immunogen

A synthesized peptide derived from human PI 3 Kinase Class 3

Isotype

Rabbit IgG

Storage Buffer

Supplied in PBS (pH 7.4) containing 50% glycerol, and 0.02% sodium azide.

Storage

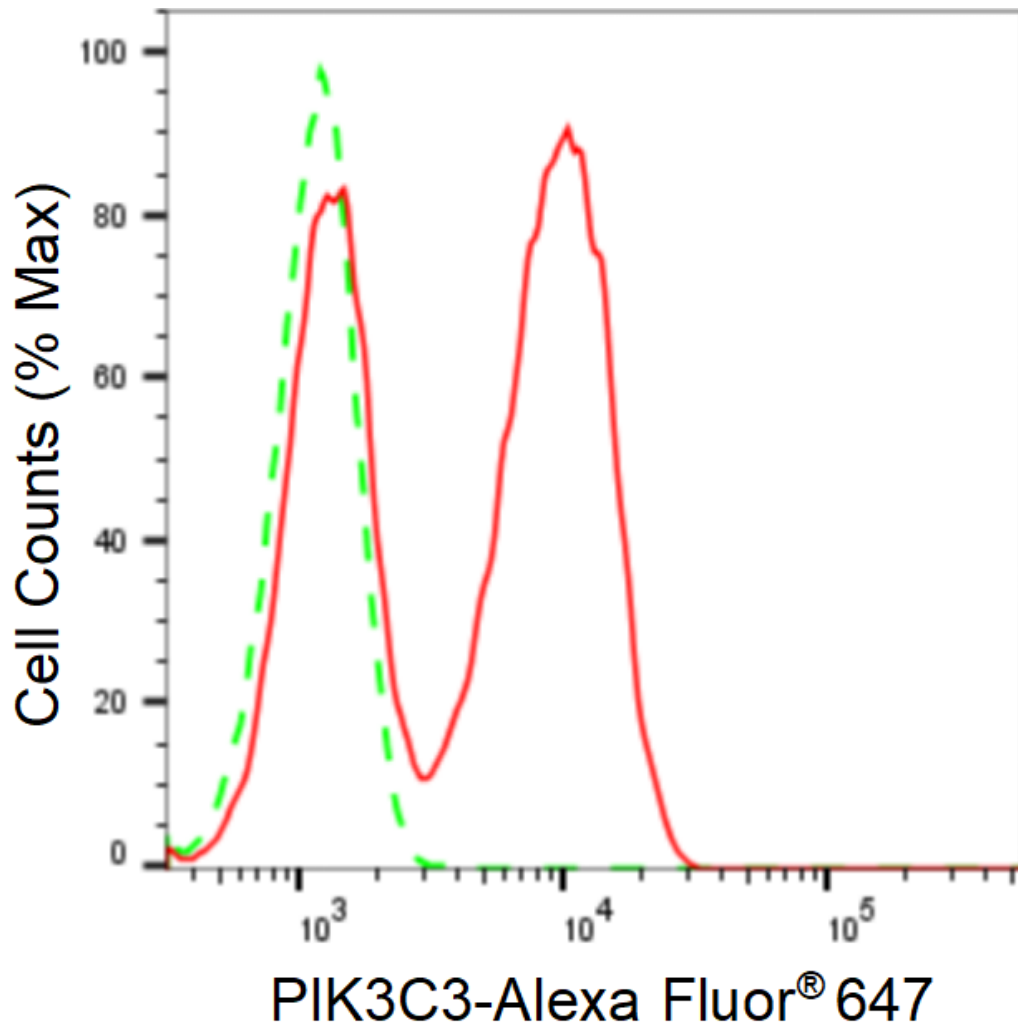
Store at -20 °C for one year.

Recommended Dilutions

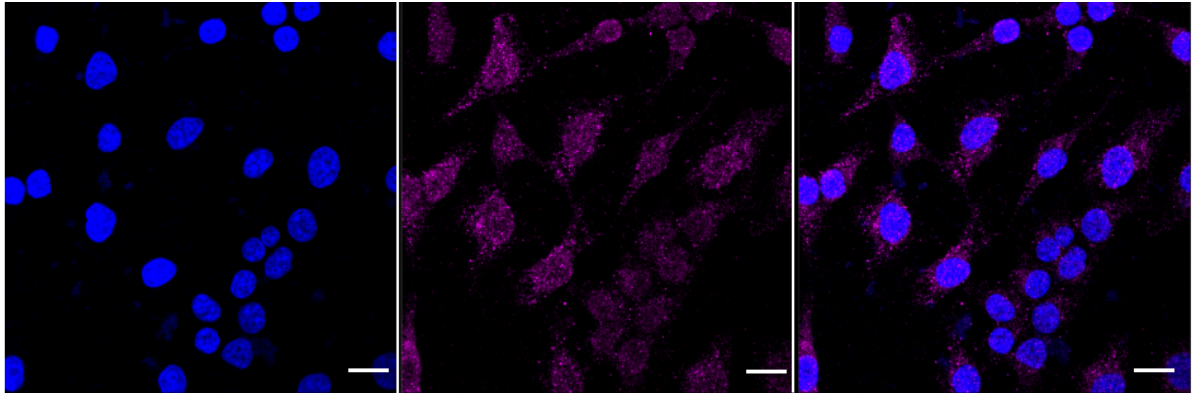
Western Blotting (WB): 1:1,000-1:5,000 Flow Cytometry (FCM): 1:2,000
Immunocytochemistry (IC): 1:1,000

Protocols

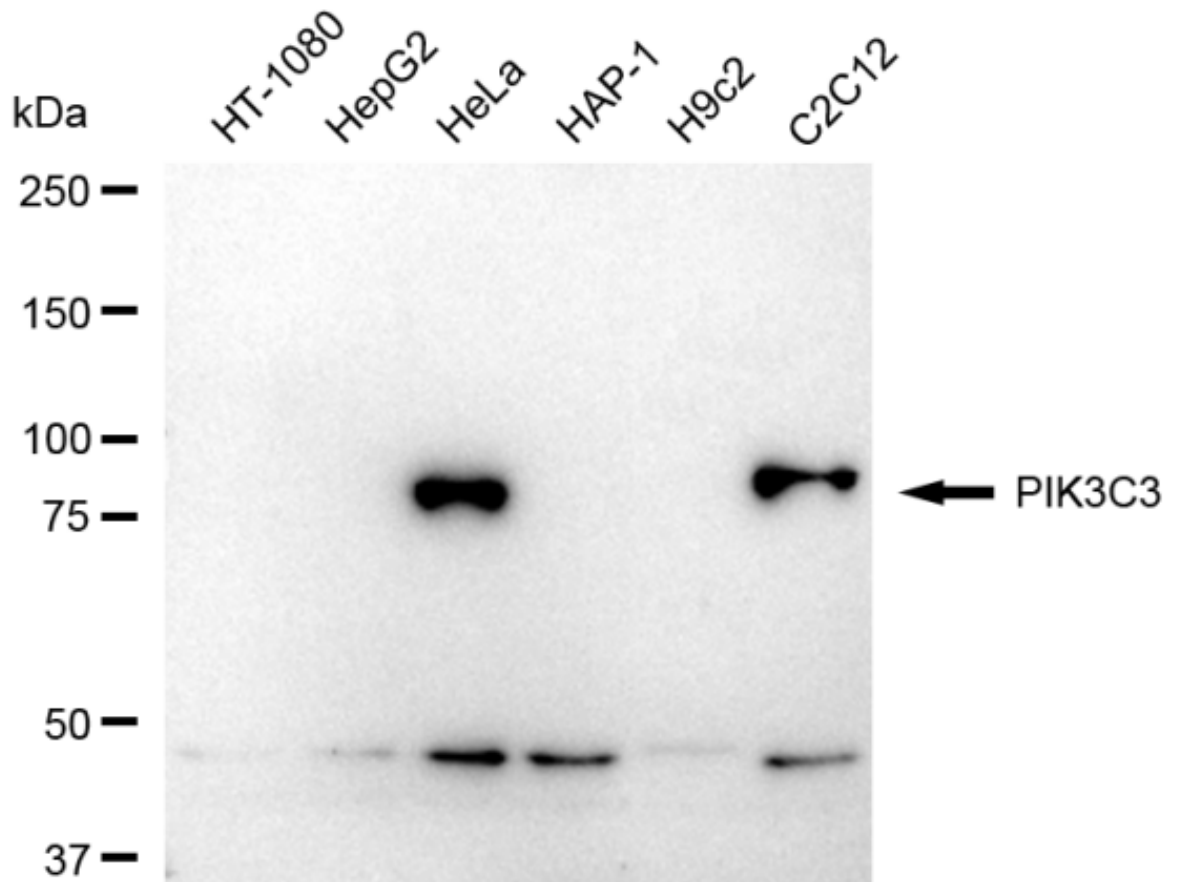
For general and specific antibody protocols please visit our website. Read all instructions before using this product.



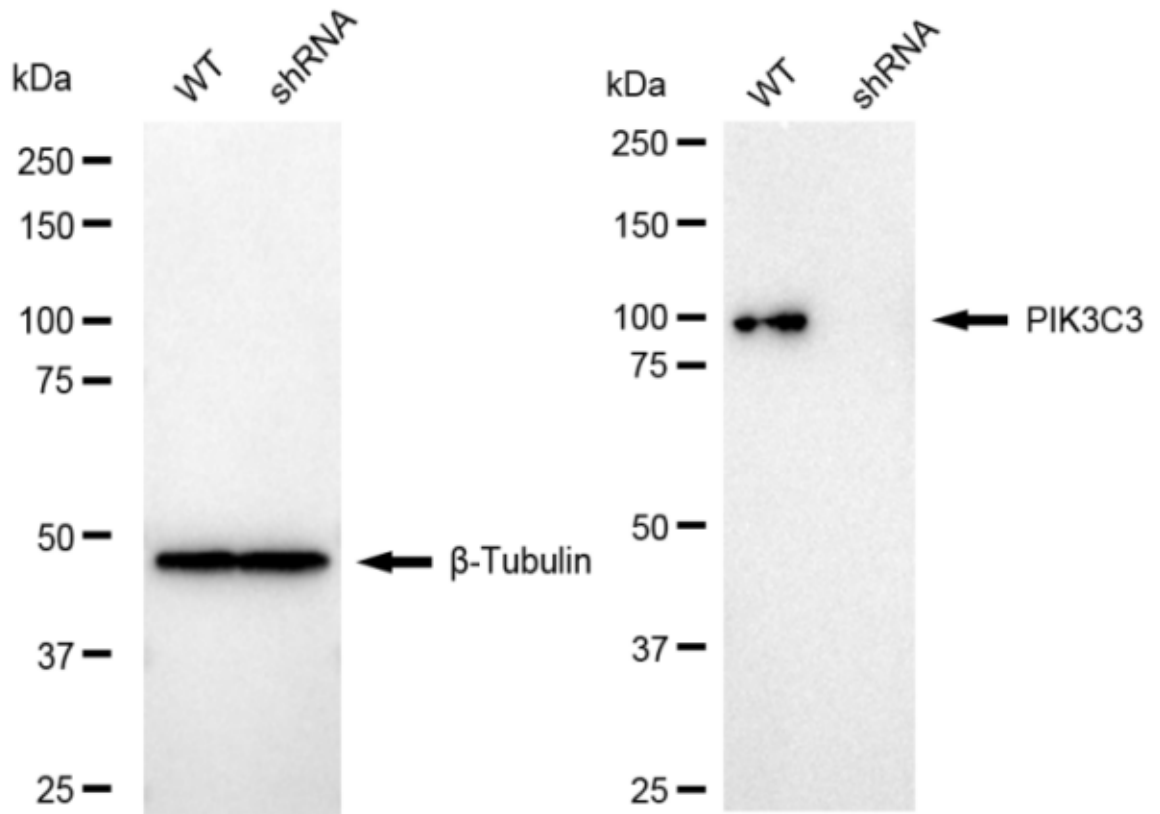
Flow cytometric analysis of PIK3C3 expression in HeLa cells using PIK3C3 antibody 1:2,000. Green, isotype control; red, PIK3C3.



Immunocytochemical staining of HeLa cells with anti-PIK3C3 antibody 1:1,000. Nuclei were stained blue with DAPI; PIK3C3 was stained magenta with Alexa Fluor® 647. Images were taken using Leica stellaris 5. Protein abundance based on laser Intensity and smart gain: Medium. Scale bar: 20 μ m.



Western blotting analysis using anti-PIK3C3 antibody 1:5,000 and HRP-conjugated goat anti-rabbit secondary antibody 1:20,000 respectively. Image was developed using FeQ™ ECL Substrate Kit .



Western blotting analysis using anti-PIK3C3 antibody 1:5,000 and HRP-conjugated goat anti-rabbit secondary antibody 1:20,000 respectively. Image was developed using NaQ™ ECL Substrate Kit .