



SunLong Biotech Co.,LTD  
Tel: 0086-571- 56623320 Fax:0086-571- 56623318  
E-mail:sales@sunlongbiotech.com  
www.sunlongbiotech.com

## **[KD-Validated] Anti-PICALM Rabbit Monoclonal Antibody**

Cat No.: KD-10688

### **Aliases:**

Phosphatidylinositol Binding Clathrin Assembly Protein; CALM; CLTH;  
Phosphatidylinositol-Binding Clathrin Assembly Protein; Clathrin Assembly Lymphoid  
Myeloid Leukemia Protein; LAP

### **Background:**

UniProt Entry: [Q13492](#);NCBI Gene Entry: [8301](#)

### **Application Information**

Molecular Weight: Predicted, 71 kDa, observed, 71,69,66 kDa Clonality: Rabbit  
monoclonal antibody Clone ID: 24GB1620 Species Reactivity: Human Applctanions  
Tsed: Western Blotting (WB), Flow Cytometry (FCM)

### **Immunogen**

A synthesized peptide derived from human PICALM

### **Isotype**

Rabbit IgG

### **Storage Buffer**

Supplied in PBS (pH 7.4) containing 50% glycerol, and 0.02% sodium azide.

### Storage

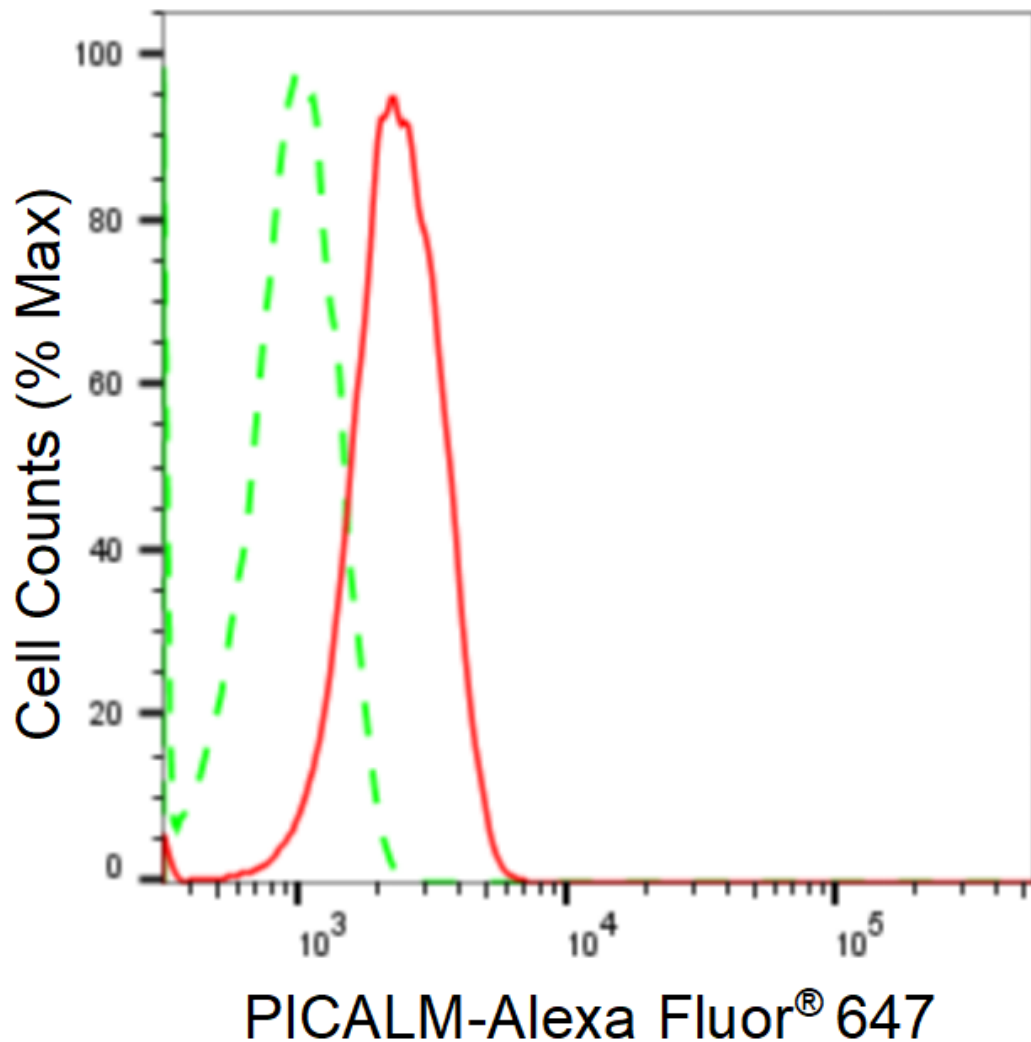
Store at -20 °C for one year.

### Recommended Dilutions

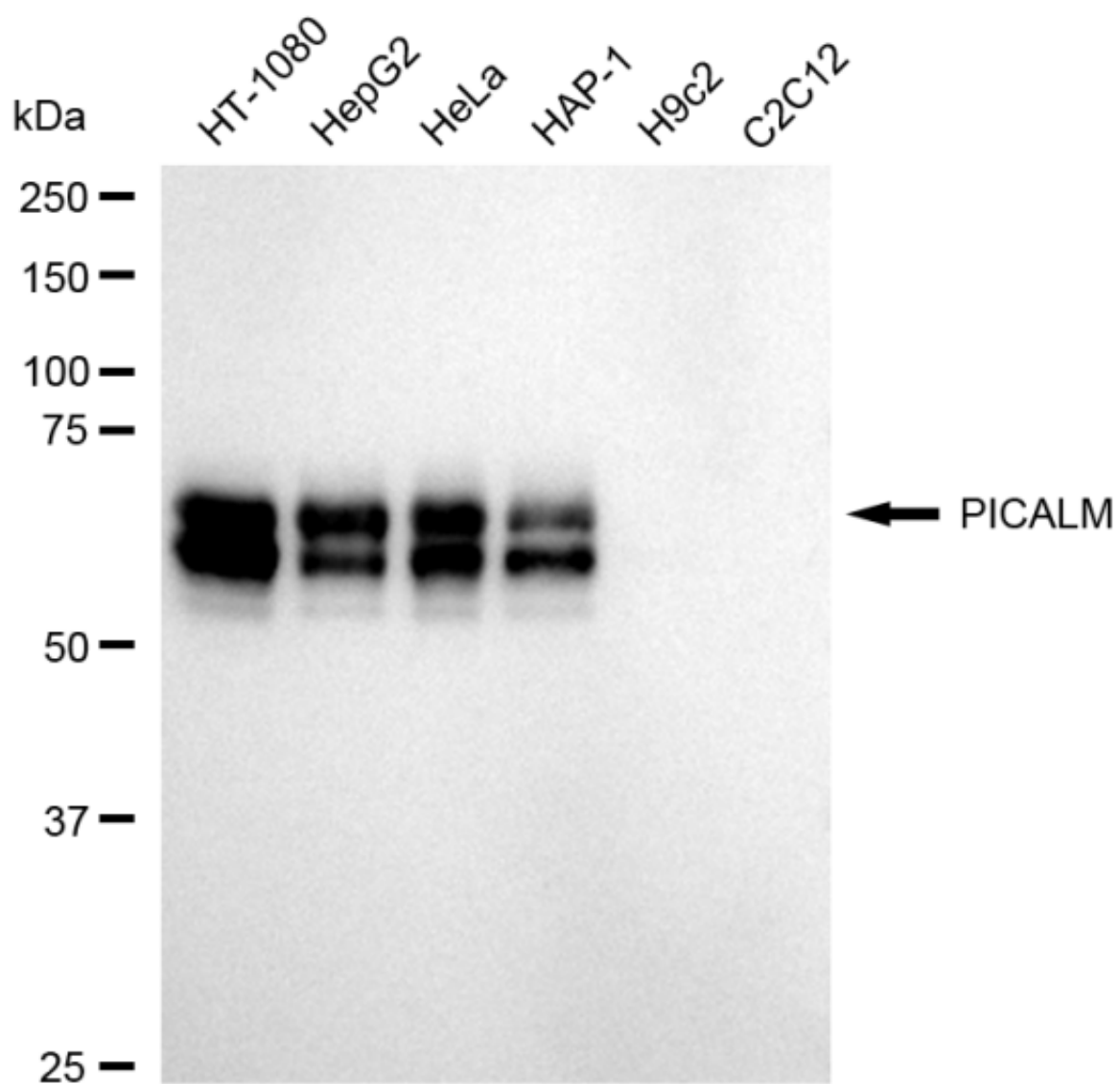
Western Blotting (WB): 1:1,000-1:5,000 Flow Cytometry (FCM): 1:2,000

### Protocols

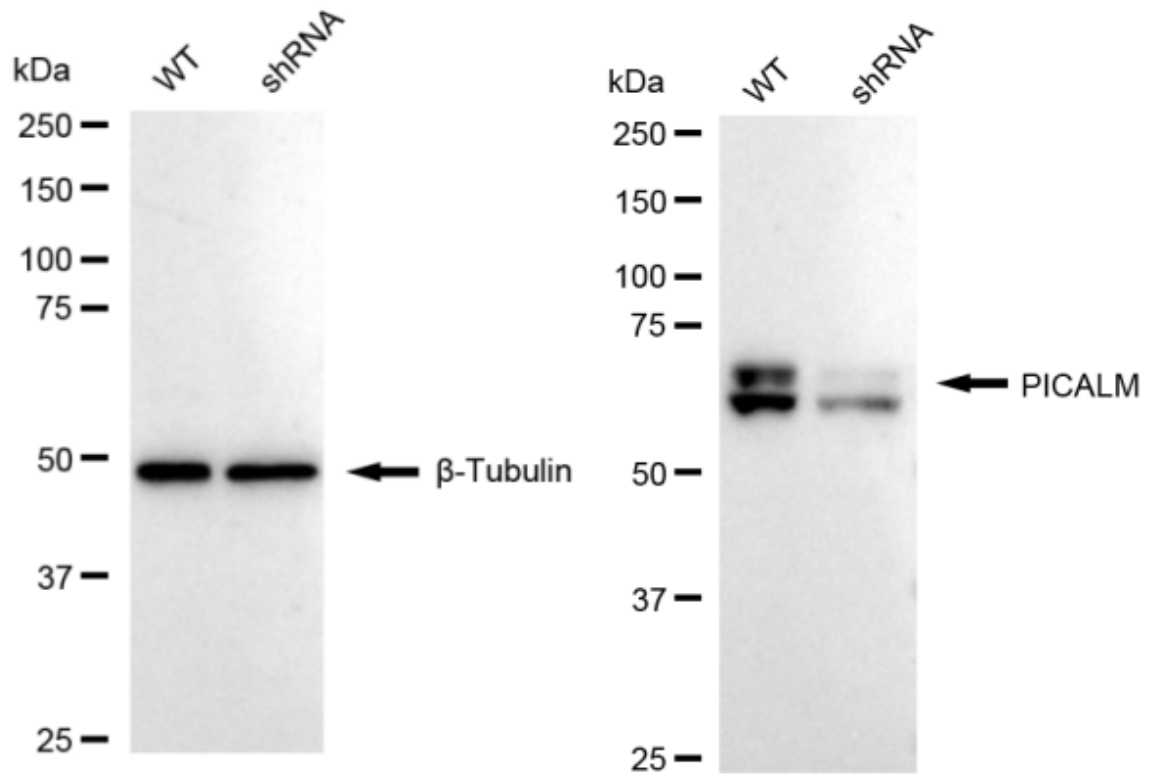
For general and specific antibody protocols please visit our website. Read all instructions before using this product.



Flow cytometric analysis of PICALM expression in HT-1080 cells using anti-PICALM antibody 1:2,000. Green, isotype control; red, PICALM.



Western blotting analysis using anti-PICALM antibody 1:5,000 and HRP-conjugated goat anti-rabbit secondary antibody 1:20,000 respectively. Image was developed using FeQ™ ECL Substrate Kit .



Western blotting analysis using anti-PICALM antibody 1:5,000 and HRP-conjugated goat anti-rabbit secondary antibody 1:20,000 respectively. Image was developed using NaQ™ ECL Substrate Kit .