



SunLong Biotech Co.,LTD
Tel: 0086-571- 56623320 Fax:0086-571- 56623318
E-mail:sales@sunlongbiotech.com
www.sunlongbiotech.com

[KD-Validated] Anti-Phosphoglycerate kinase 1 Rabbit Monoclonal Antibody

Cat No.: KD-10686

Aliases:

PGK1; Phosphoglycerate Kinase 1; Cell Migration-Inducing Gene 10 Protein; Primer Recognition Protein; EC 2.7.2.3; PRP; PGKA; Epididymis Secretory Sperm Binding Protein Li 68p; HEL-S-68p; MIG10

Background:

UniProt Entry: [P00558](#);NCBI Gene Entry: [5230](#)

Application Information

Molecular Weight: Predicted, 45 kDa, observed, 45 kDa Clonality: Rabbit monoclonal antibody Clone ID: 23GB2430 Species Reactivity: Human, Mouse, Rat Applications Tested: Western Blotting (WB), Flow Cytometry (FCM)

Immunogen

A synthesized peptide derived from human PGK1

Isotype

Rabbit IgG

Storage Buffer

Supplied in PBS (pH 7.4) containing 50% glycerol, and 0.02% sodium azide.

Storage

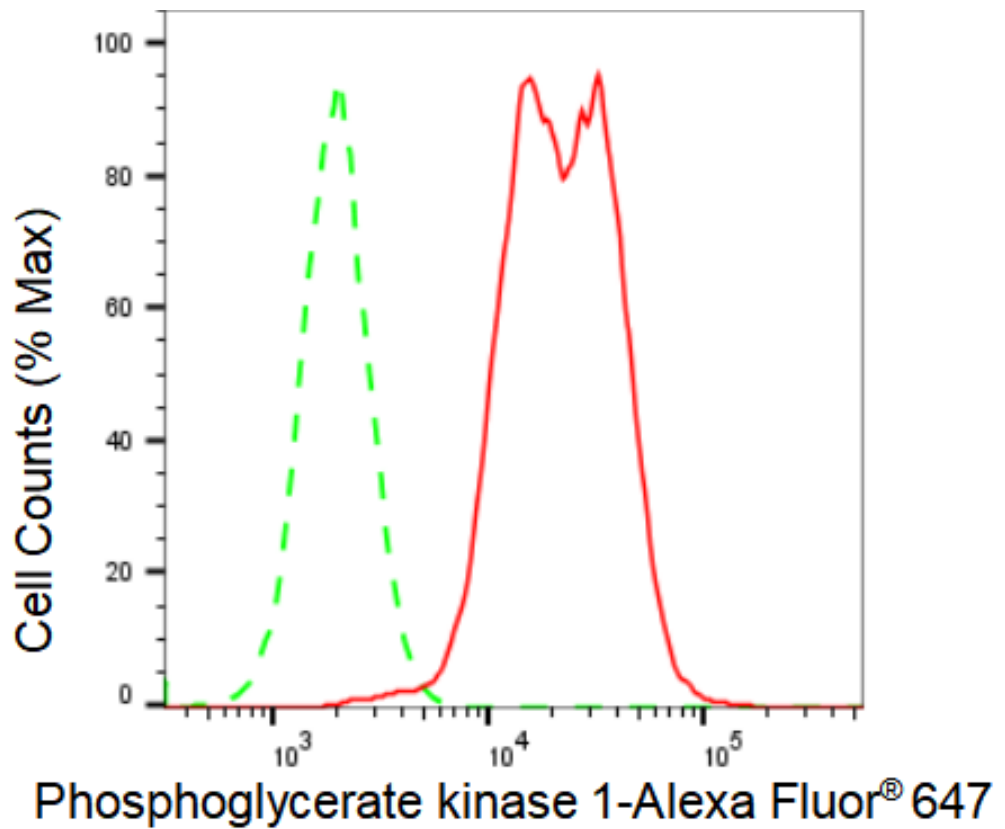
Store at -20 °C for one year.

Recommended Dilutions

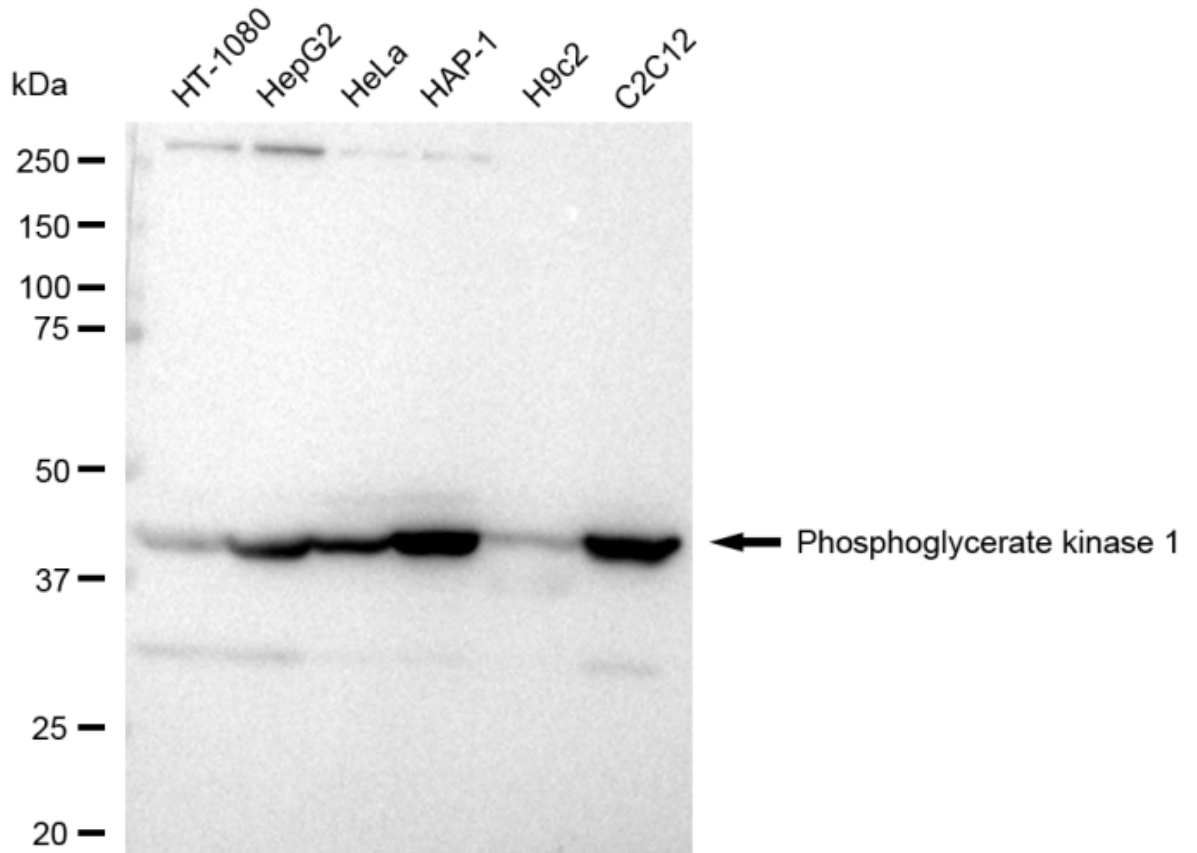
Western Blotting (WB): 1:1,000-1:5,000 Flow Cytometry (FCM): 1:2,000

Protocols

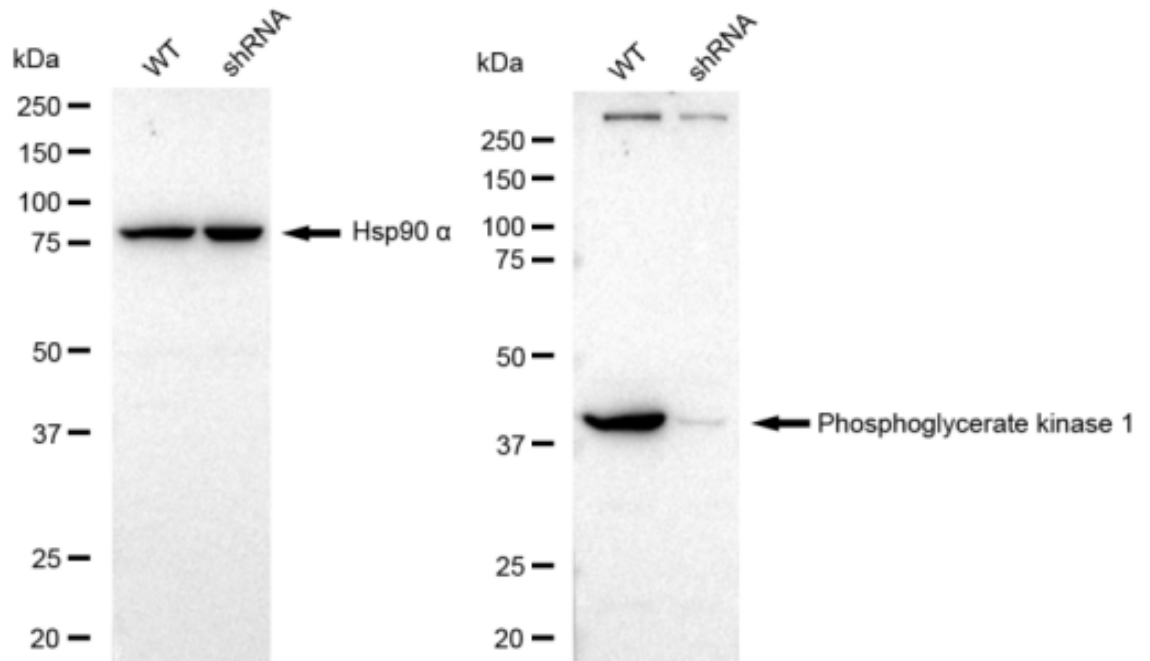
For general and specific antibody protocols please visit our website. Read all instructions before using this product.



Flow cytometric analysis of Phosphoglycerate kinase 1 expression in HAP-1 cells using Phosphoglycerate kinase 1 antibody 1:2,000. Green, isotype control; red, Phosphoglycerate kinase 1.



Western blotting analysis using anti-Phosphoglycerate kinase 1 antibody 1:5,000 and HRP-conjugated goat anti-rabbit secondary antibody 1:20,000 respectively. Image was developed using FeQ™ ECL Substrate Kit .



Western blotting analysis using anti-Phosphoglycerate kinase 1 antibody 1:5,000 and HRP-conjugated goat anti-rabbit secondary antibody 1:20,000 respectively. Image was developed using FeQ™ ECL Substrate Kit .