



SunLong Biotech Co.,LTD  
Tel: 0086-571- 56623320 Fax:0086-571- 56623318  
E-mail:sales@sunlongbiotech.com  
www.sunlongbiotech.com

## [KD-Validated] Anti-Phosphoglycerate Mutase 1 Rabbit Monoclonal Antibody

Cat No.: KD-10685

### Aliases:

Phosphoglycerate Mutase 1; PGAM-B; PGAMA; Phosphoglycerate Mutase A, Nonmuscle Form; Phosphoglycerate Mutase 1 (Brain); Phosphoglycerate Mutase Isozyme B; BPG-Dependent PGAM 1; Epididymis Secretory Protein Li 35; EC 5.4.2.11; EC 5.4.2.4; EC 5.4.2.1; HEL-S-35

### Background:

UniProt Entry: [P18669](#);NCBI Gene Entry: [5223](#)

### Application Information

Molecular Weight: Predicted, 29 kDa, observed, 29 kDa Clonality: Rabbit monoclonal antibody Clone ID: 24GB1635 Species Reactivity: Human, Mouse, Rat Applications Tested: Western Blotting (WB)

### Immunogen

A synthesized peptide derived from human PGAM1

### Isotype

Rabbit IgG

### Storage Buffer

Supplied in PBS (pH 7.4) containing 50% glycerol, and 0.02% sodium azide.

### Storage

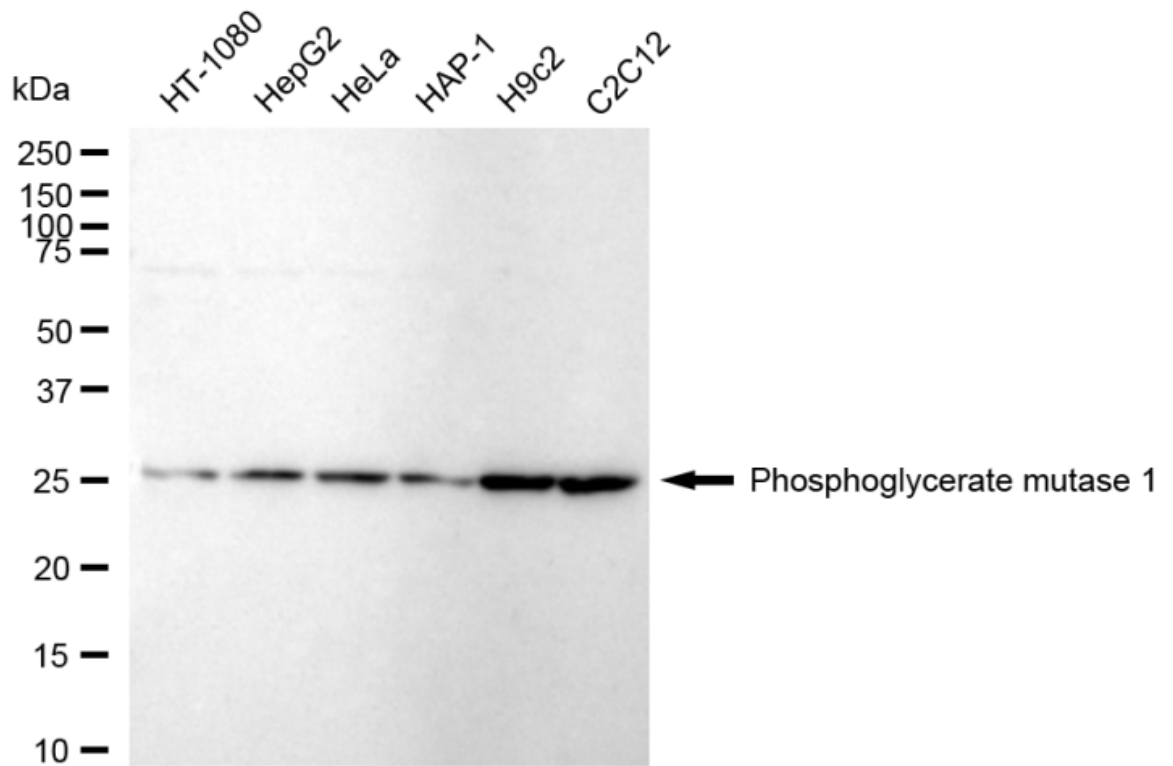
Store at -20 °C for one year.

### Recommended Dilutions

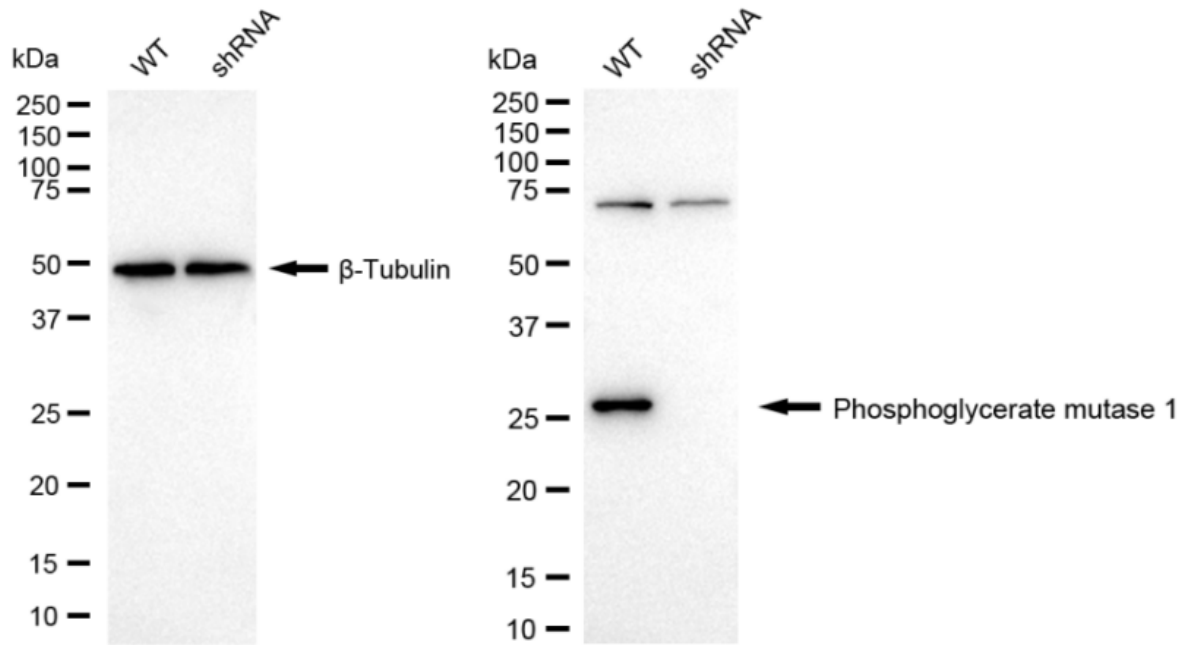
Western Blotting (WB): 1:1,000-1:5,000

### Protocols

For general and specific antibody protocols please visit our website. Read all instructions before using this product.



Western blotting analysis using anti-Phosphoglycerate mutase 1 antibody 1:5,000 and HRP-conjugated goat anti-rabbit secondary antibody 1:20,000 respectively. Image was developed using FeQ™ ECL Substrate Kit .



Western blotting analysis using anti-Phosphoglycerate mutase 1 antibody 1:5,000 and HRP-conjugated goat anti-rabbit secondary antibody 1:20,000 respectively. Image was developed using NaQ™ ECL Substrate Kit .