



SunLong Biotech Co.,LTD  
Tel: 0086-571- 56623320 Fax:0086-571- 56623318  
E-mail:sales@sunlongbiotech.com  
www.sunlongbiotech.com

## [KD-Validated] Anti-PFKM Rabbit Monoclonal Antibody

Cat No.: KD-10684

### Aliases:

PFKM; Phosphofructokinase, Muscle; PPP1R122; PFK-1; PFKX; ATP-Dependent 6-Phosphofructokinase, Muscle Type; Protein Phosphatase 1, Regulatory Subunit 122; Phosphofructokinase, Polypeptide X; Phosphofructo-1-Kinase Isozyme A; 6-Phosphofructokinase Type A; Phosphohexokinase; EC 2.7.1.11; ATP-PFK; PFK-A; 6-Phosphofructokinase, Muscle Type; 6-Phosphofructo-1-Kinase; Phosphofructokinase 1; Phosphofructokinase-M; EC 2.7.1; PFK-M; GSD7; PFK1; PFKA

### Background:

UniProt Entry: [P08237](#);NCBI Gene Entry: [5213](#)

### Application Information

Molecular Weight: Predicted, 85 kDa, observed, 75 kDa Clonality: Rabbit monoclonal antibody Clone ID: 23GB2740 Species Reactivity: Human, Mouse, Rat Applications Tested: Western Blotting (WB), Flow Cytometry (FCM), Immunocytochemistry (IC)

### Immunogen

A synthesized peptide derived from human Fructose 6 Phosphate Kinase

### Isotype

Rabbit IgG

### Storage Buffer

Supplied in PBS (pH 7.4) containing 50% glycerol, and 0.02% sodium azide.

**Storage**

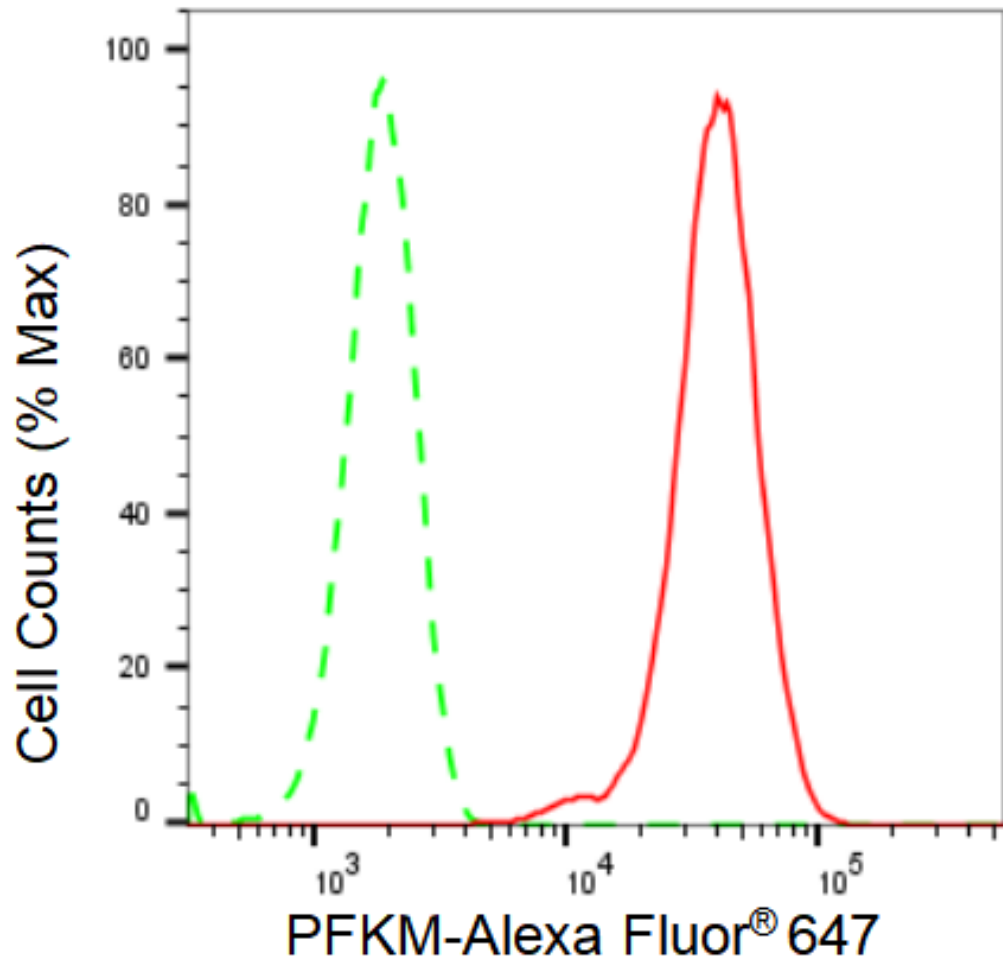
Store at -20 °C for one year.

**Recommended Dilutions**

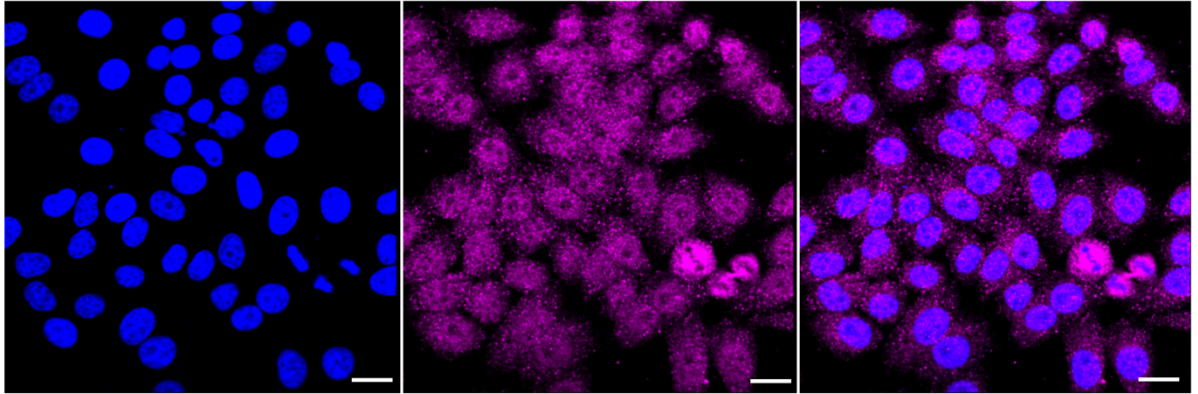
Western Blotting (WB): 1:1,000-1:5,000 Flow Cytometry (FCM): 1:2,000  
Immunocytochemistry (IC): 1:1,000

**Protocols**

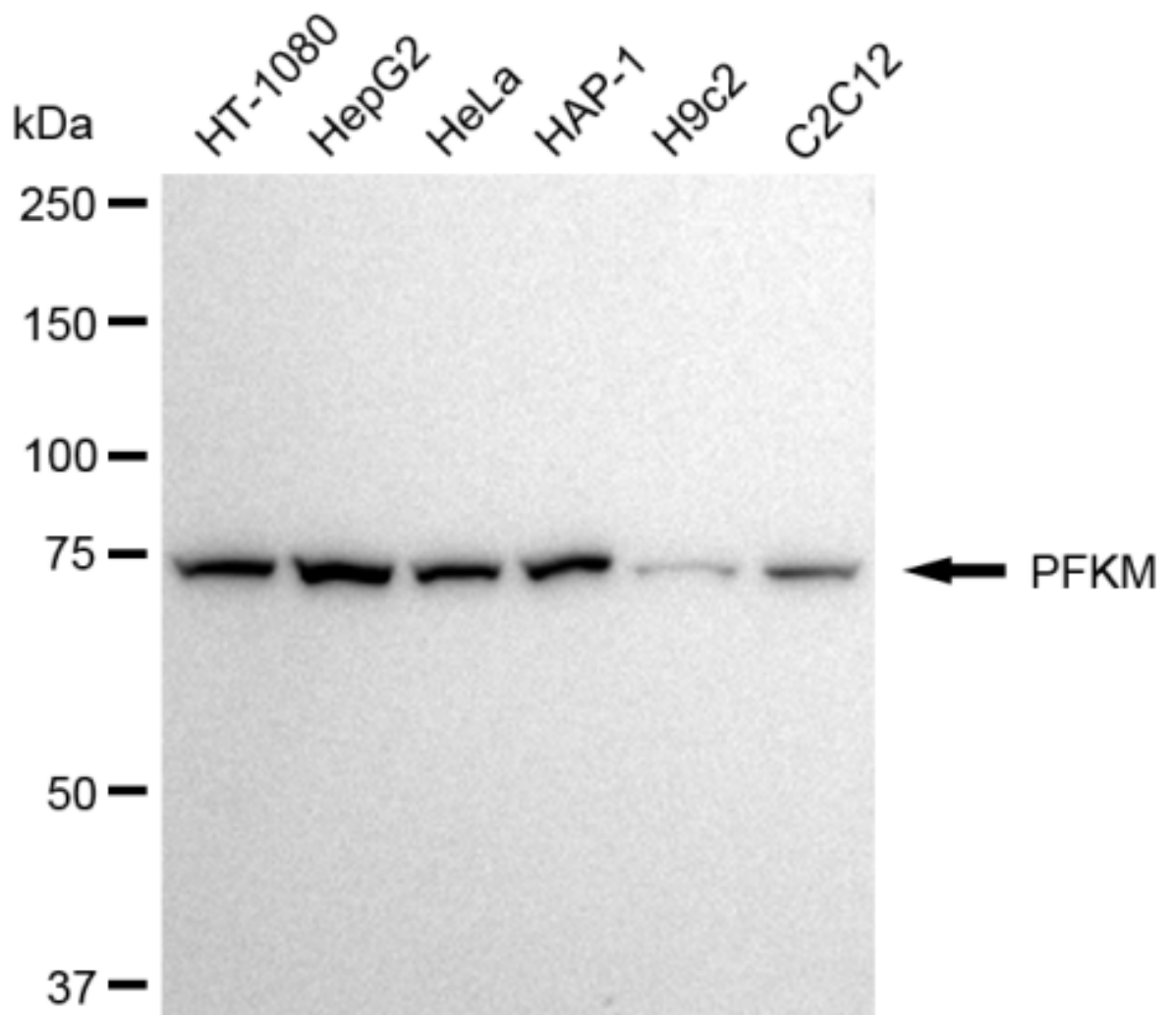
For general and specific antibody protocols please visit our website. Read all instructions before using this product.



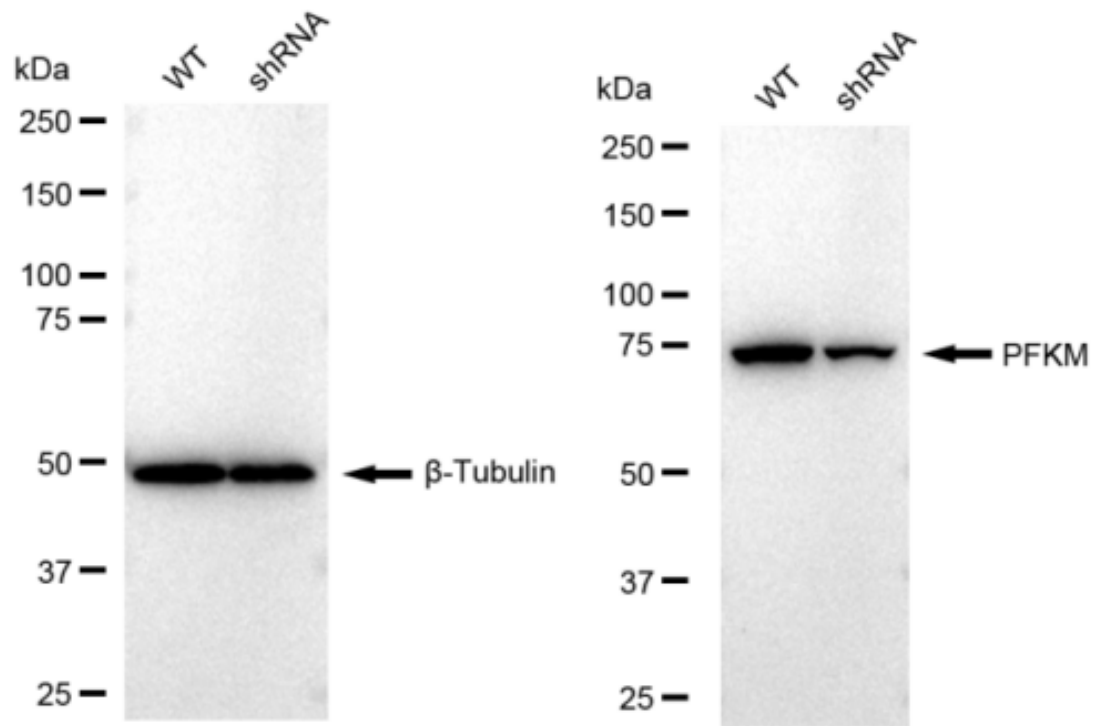
Flow cytometric analysis of PFKM expression in HepG2 cells using PFKM antibody 1:2,000. Green, isotype control; red, PFKM.



Immunocytochemical staining of HepG2 cells with PFKM antibody 1:1,000. Nuclei were stained blue with DAPI; PFKM was stained magenta with Alexa Fluor® 647. Images were taken using Leica stellaris 5. Protein abundance based on laser Intensity and smart gain: Medium. Scale bar: 20  $\mu$ m.



Western blotting analysis using anti-PFKM antibody 1:5,000 and HRP-conjugated goat anti-rabbit secondary antibody 1:20,000 respectively. Image was developed using FeQ™ ECL Substrate Kit .



Western blotting analysis using anti-PFKM antibody 1:5,000 and HRP-conjugated goat anti-rabbit secondary antibody 1:20,000 respectively. Image was developed using FeQ™ ECL Substrate Kit .