



SunLong Biotech Co.,LTD
Tel: 0086-571- 56623320 Fax:0086-571- 56623318
E-mail:sales@sunlongbiotech.com
www.sunlongbiotech.com

[KD-Validated] Anti-PFKFB3 Rabbit Monoclonal Antibody

Cat No.: KD-10683

Aliases:

PFKFB3; 6-Phosphofructo-2-Kinase/Fructose-2,6-Biphosphatase 3; 6-Phosphofructo-2-Kinase/Fructose-2,6-Bisphosphatase 3; 6PF-2-K/Fru-2,6-P2ase Brain/Placenta-Type Isozyme 3; Renal Carcinoma Antigen NY-REN-56; 6PF-2-K/Fru-2,6-P2ase 3; PFK/FBPase 3; IPFK-2; Inducible 6-Phosphofructo-2-Kinase/Fructose-2,6-Bisphosphatase; Fructose-6-Phosphate,2-Kinase/Fructose-2, 6-Bisphosphatase; 6-Phosphofructo-2-Kinase/ Fructose-2,6-Bisphosphatase; IPFK2; PFK2

Background:

UniProt Entry: [Q16875](#);NCBI Gene Entry: [5209](#)

Application Information

Molecular Weight: Predicted, 60 kDa, observed, 58 kDa Clonality: Rabbit monoclonal antibody Clone ID: 23GB4880 Species Reactivity: Human, Mouse, Rat Applications Tested: Western Blotting (WB), Flow Cytometry (FCM)

Immunogen

A synthesized peptide derived from human PFKFB3

Isotype

Rabbit IgG

Storage Buffer

Supplied in PBS (pH 7.4) containing 50% glycerol, and 0.02% sodium azide.

Storage

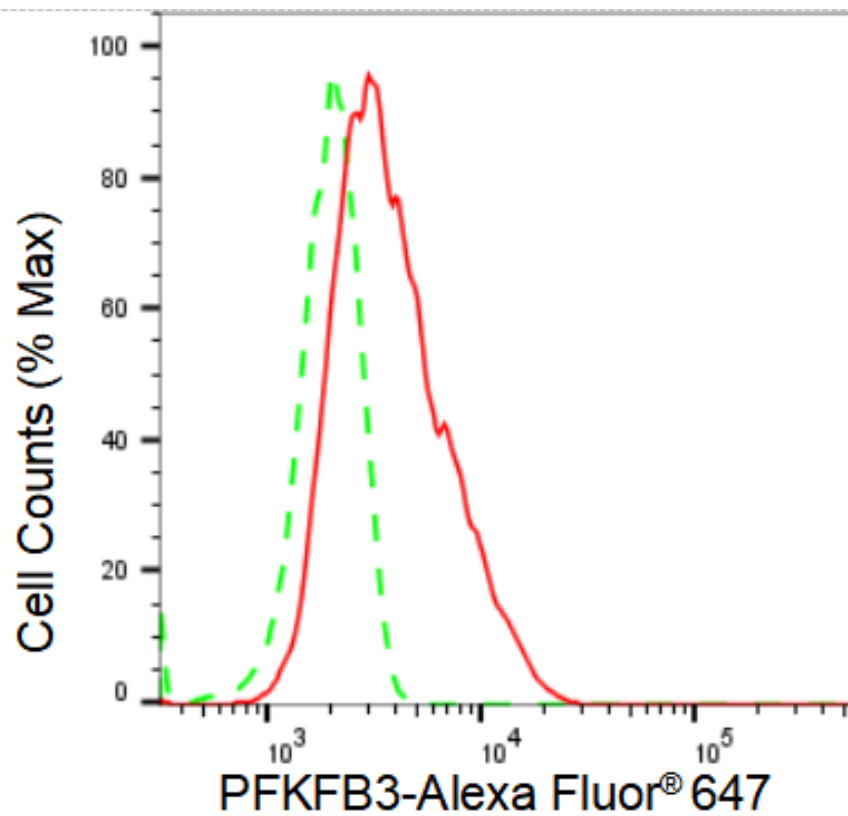
Store at -20 °C for one year.

Recommended Dilutions

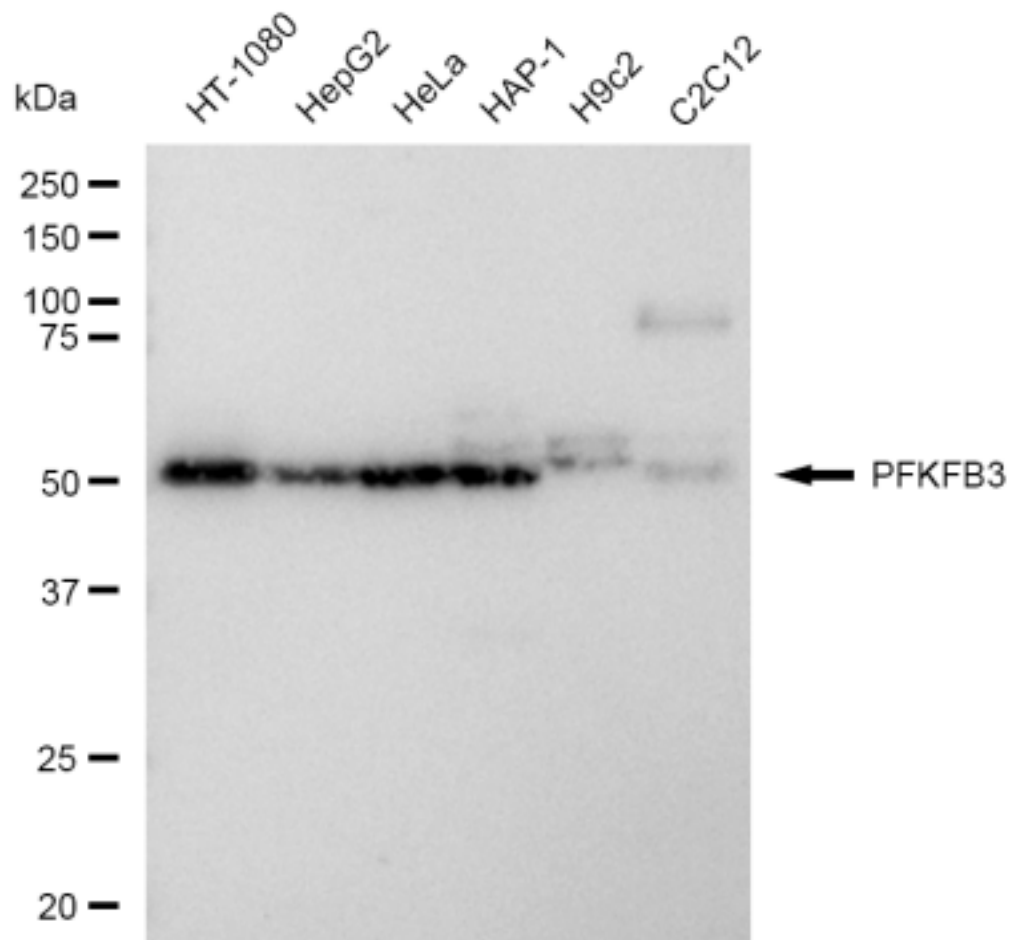
Western Blotting (WB): 1:1,000-1:5,000 Flow Cytometry (FCM): 1:2,000

Protocols

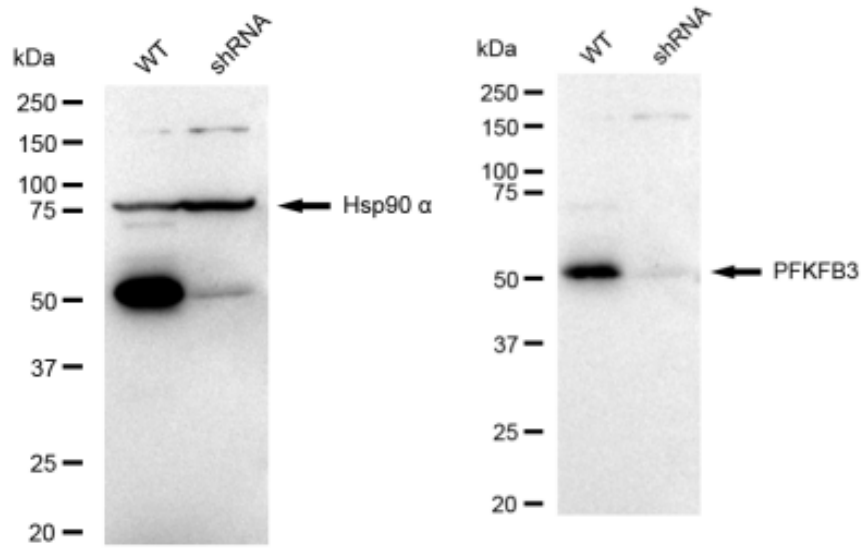
For general and specific antibody protocols please visit our website. Read all instructions before using this product.



Flow cytometric analysis of PFKFB3 expression in HT-1080 cells using PFKFB3 antibody 1:2,000. Green, isotype control; red, PFKFB3.



Western blotting analysis using anti-PFKFB3 antibody 1:5,000 and HRP-conjugated goat anti-rabbit secondary antibody 1:20,000 respectively. Image was developed using FeQ™ ECL Substrate Kit .



Western blotting analysis using anti-PFKFB3 antibody 1:5,000 and HRP-conjugated goat anti-rabbit secondary antibody 1:20,000 respectively. Image was developed using FeQ™ ECL Substrate Kit .