



SunLong Biotech Co.,LTD
Tel: 0086-571- 56623320 Fax:0086-571- 56623318
E-mail:sales@sunlongbiotech.com
www.sunlongbiotech.com

[KD-Validated] Anti-PERP Rabbit Monoclonal Antibody

Cat No.: KD-10682

Aliases:

P53 Apoptosis Effector Related To PMP22; KRTCAP1; PIGPC1; KCP1; THW; DJ496H19.1; P53 Apoptosis Effector Related To PMP-22; Keratinocyte-Associated Protein 1; PERP, TP53 Apoptosis Effector; P53-Induced Protein PIGPC1; Transmembrane Protein THW; KCP-1; Keratinocytes Associated Protein 1; Keratinocyte Associated Protein 1; 1110017A08Rik; EKVP7; OLMS2

Background:

UniProt Entry: [Q96FX8](#);NCBI Gene Entry: [64065](#)

Application Information

Molecular Weight: Predicted, 21 kDa, observed, 21 kDa Clonality: Rabbit monoclonal antibody Clone ID: 24GB1630 Species Reactivity: Human Applications Used: Western Blotting (WB), Flow Cytometry (FCM)

Immunogen

A synthesized peptide derived from human PERP

Isotype

Rabbit IgG

Storage Buffer

Supplied in PBS (pH 7.4) containing 50% glycerol, and 0.02% sodium azide.

Storage

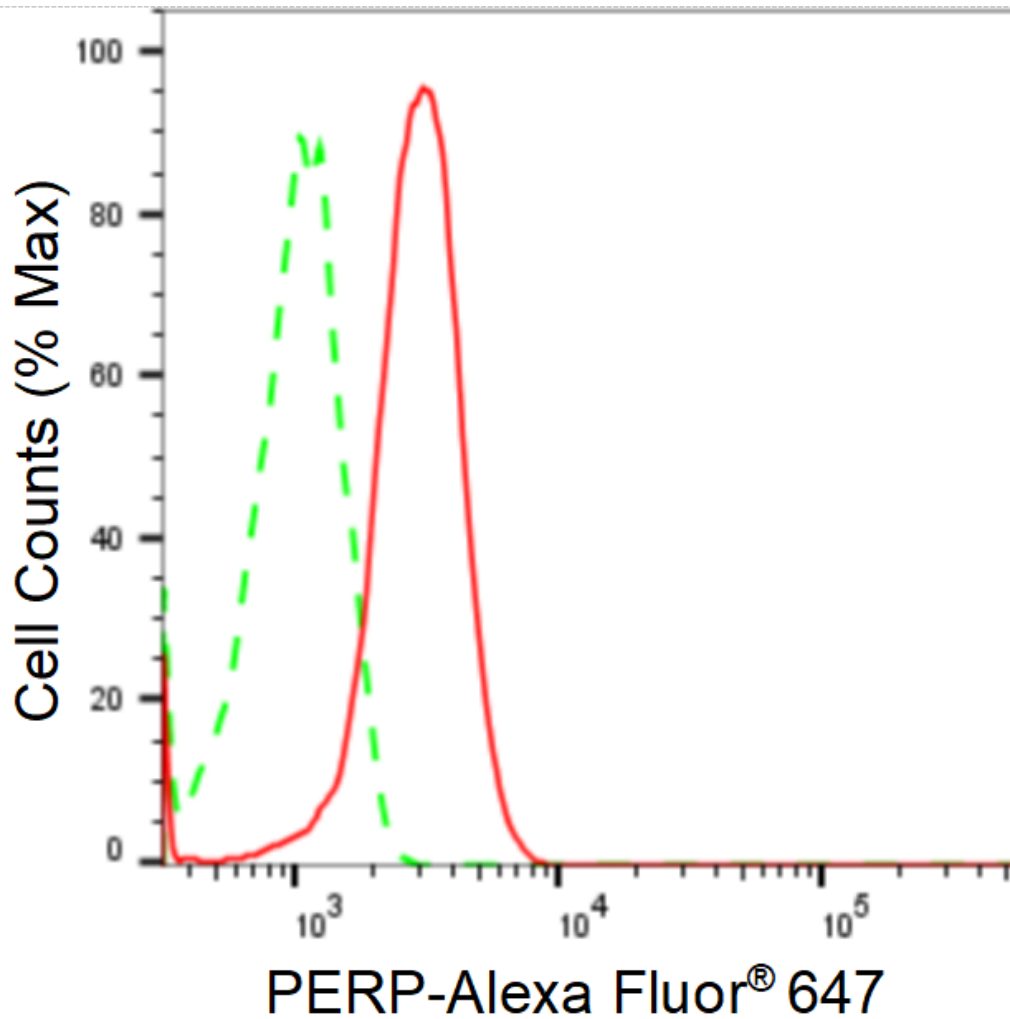
Store at -20 °C for one year.

Recommended Dilutions

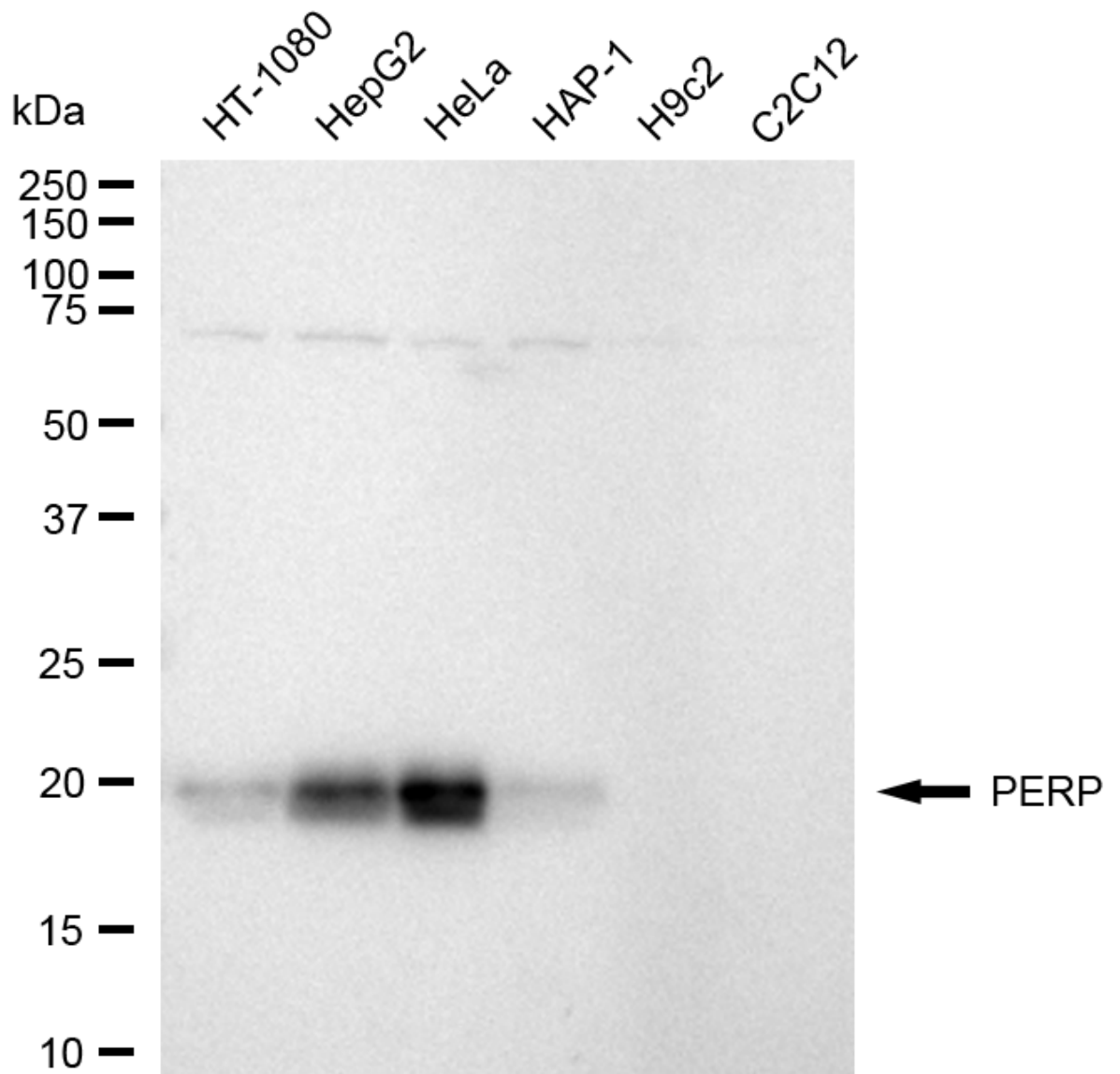
Western Blotting (WB): 1:1,000-1:5,000 Flow Cytometry (FCM): 1:2,000

Protocols

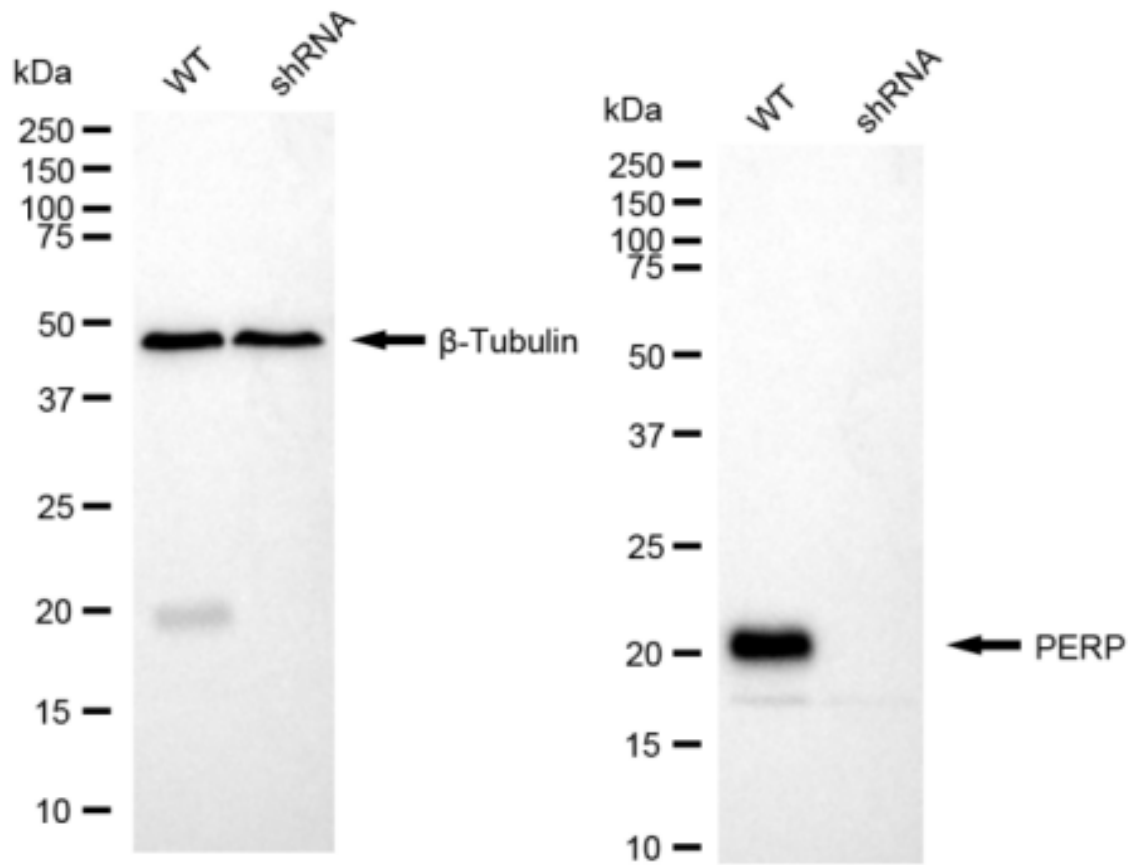
For general and specific antibody protocols please visit our website. Read all instructions before using this product.



Flow cytometric analysis of PERP expression in HeLa cells using anti-PERP antibody 1:2,000. Green, isotype control; red, PERP.



Western blotting analysis using anti-PERP antibody 1:5,000 and HRP-conjugated goat anti-rabbit secondary antibody 1:20,000 respectively. Image was developed using FeQ™ ECL Substrate Kit .



Western blotting analysis using anti-PERP antibody 1:5,000 and HRP-conjugated goat anti-rabbit secondary antibody 1:20,000 respectively. Image was developed using NaQ™ ECL Substrate Kit .