



SunLong Biotech Co.,LTD
Tel: 0086-571- 56623320 Fax:0086-571- 56623318
E-mail:sales@sunlongbiotech.com
www.sunlongbiotech.com

[KD-Validated] Anti-PELP1 Rabbit Monoclonal Antibody

Cat No.: KD-10680

Aliases:

Proline, Glutamate And Leucine Rich Protein 1; MNAR; Modulator Of Non-Genomic Activity Of Estrogen Receptor; Proline-, Glutamic Acid- And Leucine-Rich Protein 1; Transcription Factor HMX3; Proline, Glutamic Acid And Leucine Rich Protein 1; Proline And Glutamic Acid Rich Nuclear Protein; P160; HMX3

Background:

UniProt Entry: [Q8IZL8](#);NCBI Gene Entry: [27043](#)

Application Information

Molecular Weight: Predicted, 120 kDa, observed, 160 kDa Clonality: Rabbit monoclonal antibody Clone ID: 24GB1145 Species Reactivity: Human, Mouse, Rat Applications Tested: Western Blotting (WB), Flow Cytometry (FCM)

Immunogen

A synthesized peptide derived from human PELP1

Isotype

Rabbit IgG

Storage Buffer

Supplied in PBS (pH 7.4) containing 50% glycerol, and 0.02% sodium azide.

Storage

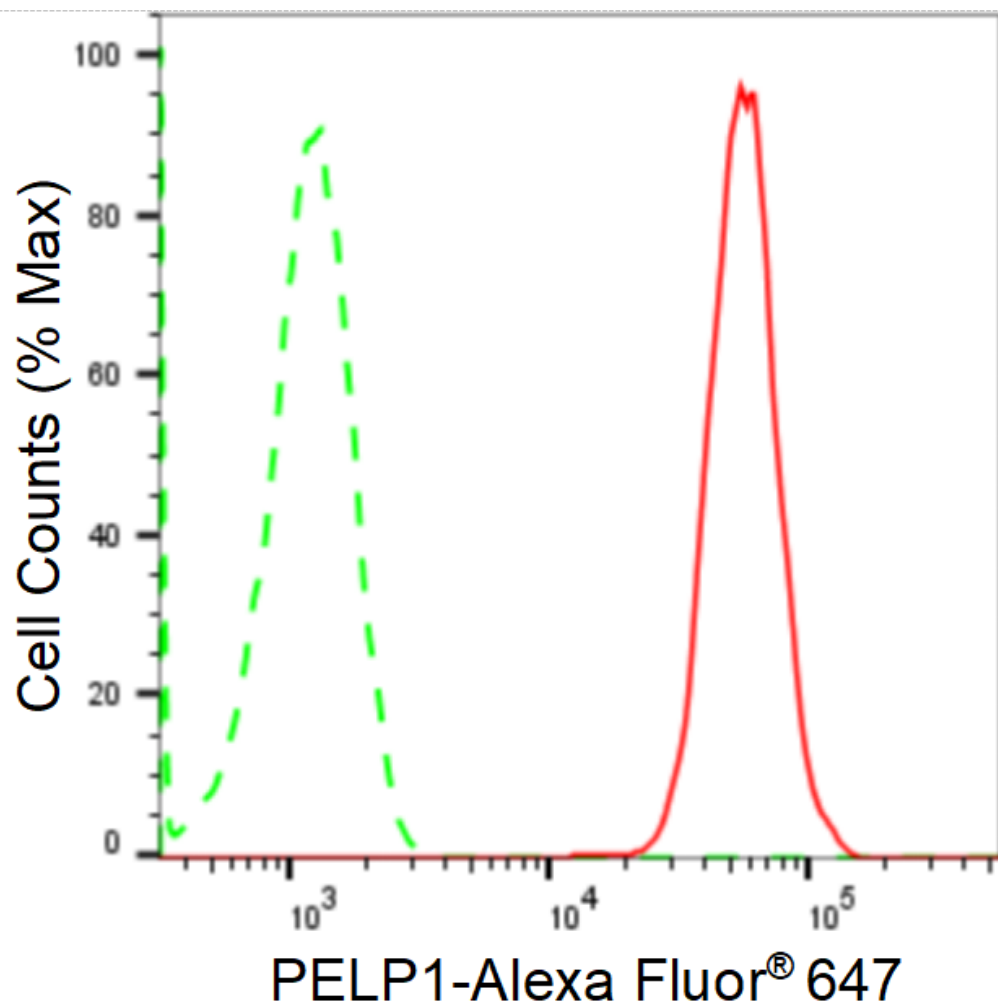
Store at -20 °C for one year.

Recommended Dilutions

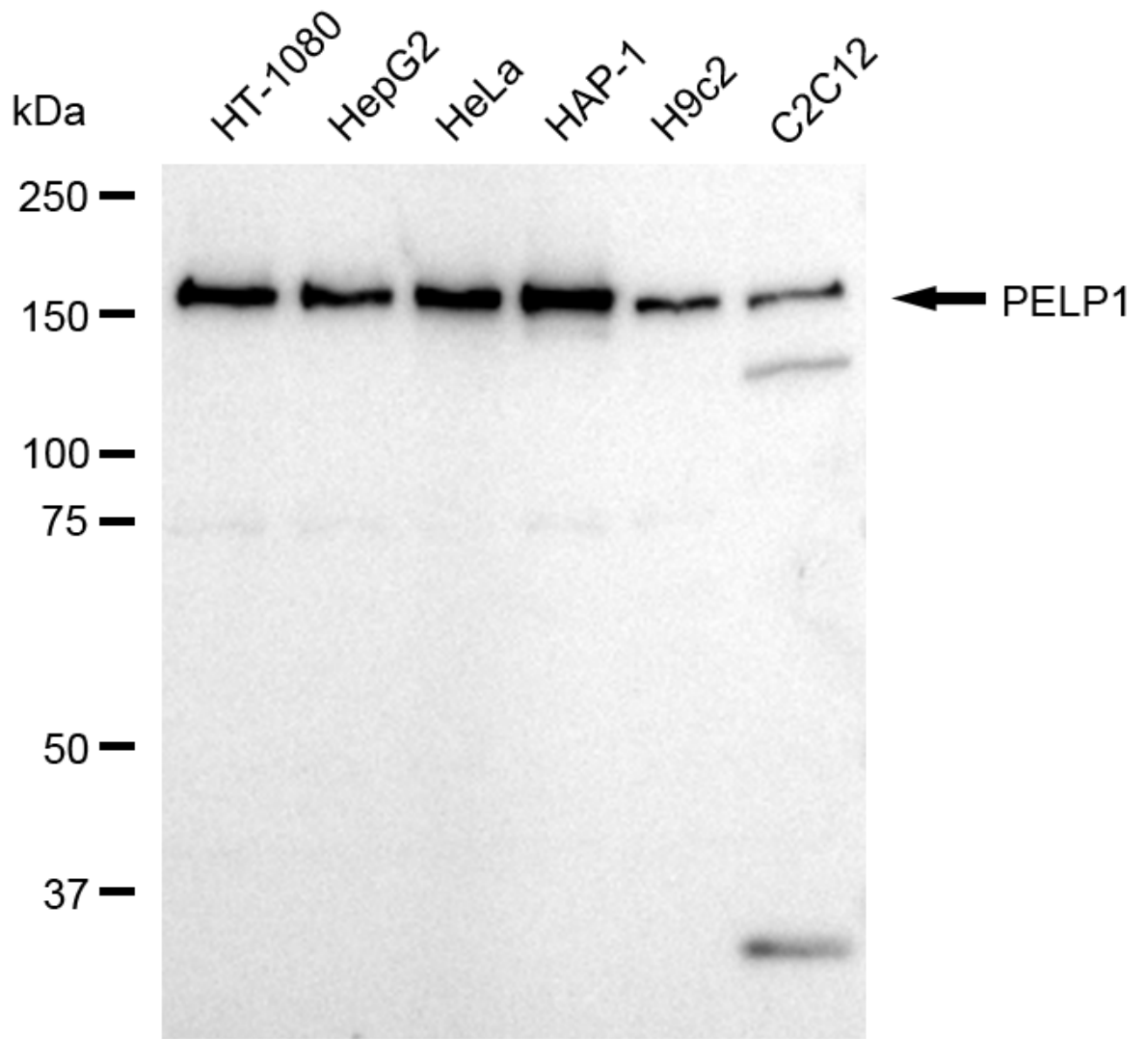
Western Blotting (WB): 1:1,000-1:5,000 Flow Cytometry (FCM): 1:2,000

Protocols

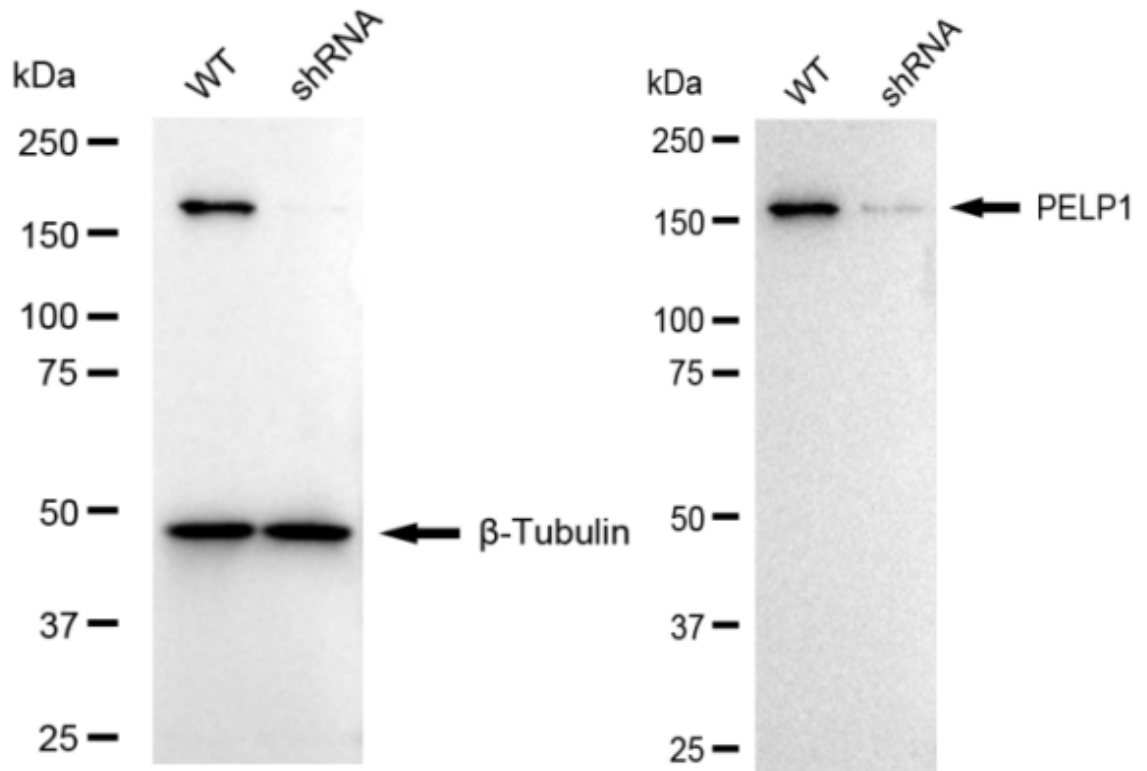
For general and specific antibody protocols please visit our website. Read all instructions before using this product.



Flow cytometric analysis of PELP1 expression in HAP-1 cells using anti-PELP1 antibody 1:2,000. Green, isotype control; red, PELP1.



Western blotting analysis using anti-PELP1 antibody 1:5,000 and HRP-conjugated goat anti-rabbit secondary antibody 1:20,000 respectively. Image was developed using FeQ™ ECL Substrate Kit .



Western blotting analysis using anti-PELP1 antibody 1:5,000 and HRP-conjugated goat anti-rabbit secondary antibody 1:20,000 respectively. Image was developed using NaQ™ ECL Substrate Kit .