



SunLong Biotech Co.,LTD
Tel: 0086-571- 56623320 Fax:0086-571- 56623318
E-mail:sales@sunlongbiotech.com
www.sunlongbiotech.com

[KD-Validated] Anti-PBP Rabbit Monoclonal Antibody

Cat No.: KD-10678

Aliases:

Phosphatidylethanolamine Binding Protein 1; RKIP; PEBP; HCNP; PBP; Hippocampal Cholinergic Neurostimulating Peptide; Phosphatidylethanolamine-Binding Protein 1; Raf Kinase Inhibitory Protein; Raf Kinase Inhibitor Protein; Prostatic Binding Protein; Neuropolypeptide H3; HCNPpp; PEBP-1; Epididymis Secretory Protein Li 34; Epididymis Secretory Protein Li 96; Epididymis Luminal Protein 210; Prostatic-Binding Protein; HEL-S-34; HEL-S-96; HEL-210

Background:

UniProt Entry: [P30086](#);NCBI Gene Entry: [5037](#)

Application Information

Molecular Weight: Predicted, 21 kDa, observed, 21 kDa Clonality: Rabbit monoclonal antibody Clone ID: 24GB860 Species Reactivity: Human, Mouse, Rat Applications Tested: Western Blotting (WB), Flow Cytometry (FCM), Immunocytochemistry (IC)

Immunogen

A synthesized peptide derived from human PEBP1

Isotype

Rabbit IgG

Storage Buffer

Supplied in PBS (pH 7.4) containing 50% glycerol, and 0.02% sodium azide.

Storage

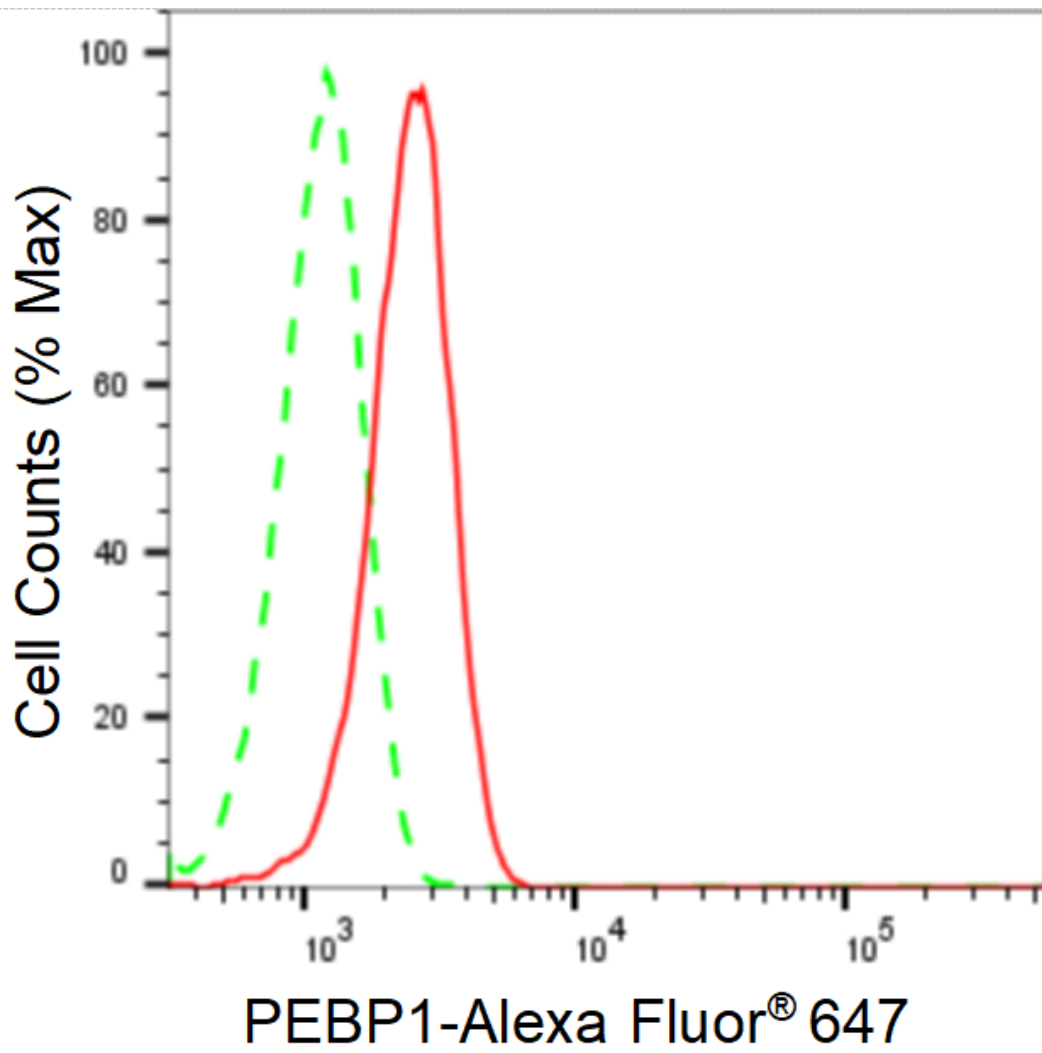
Store at -20 °C for one year.

Recommended Dilutions

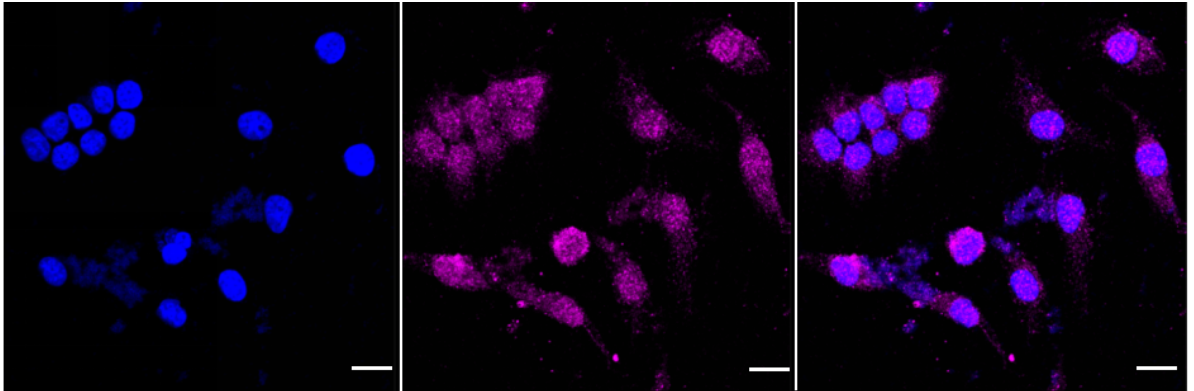
Western Blotting (WB): 1:1,000-1:5,000 Flow Cytometry (FCM): 1:2,000
Immunocytochemistry (IC): 1:1,000

Protocols

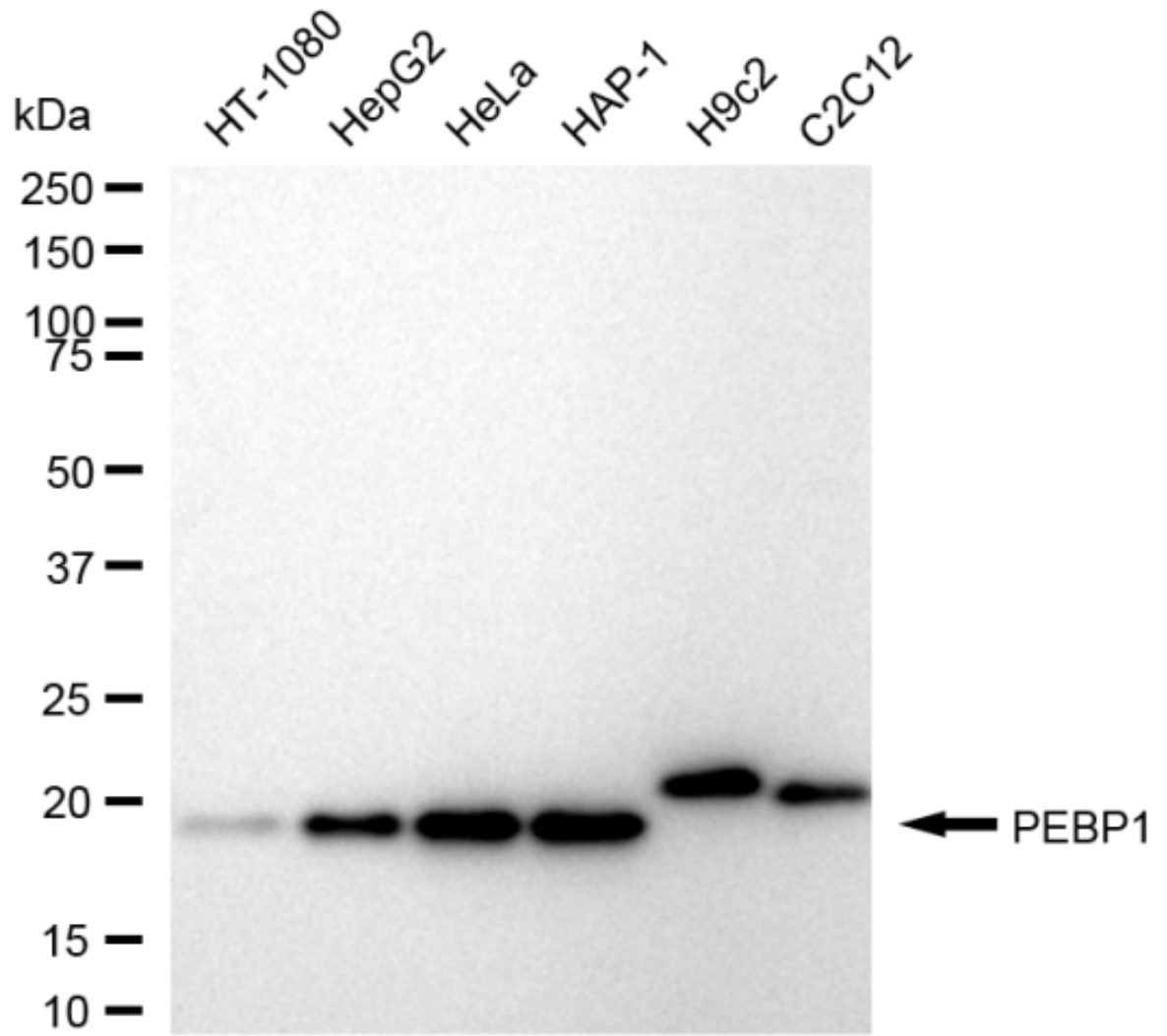
For general and specific antibody protocols please visit our website. Read all instructions before using this product.



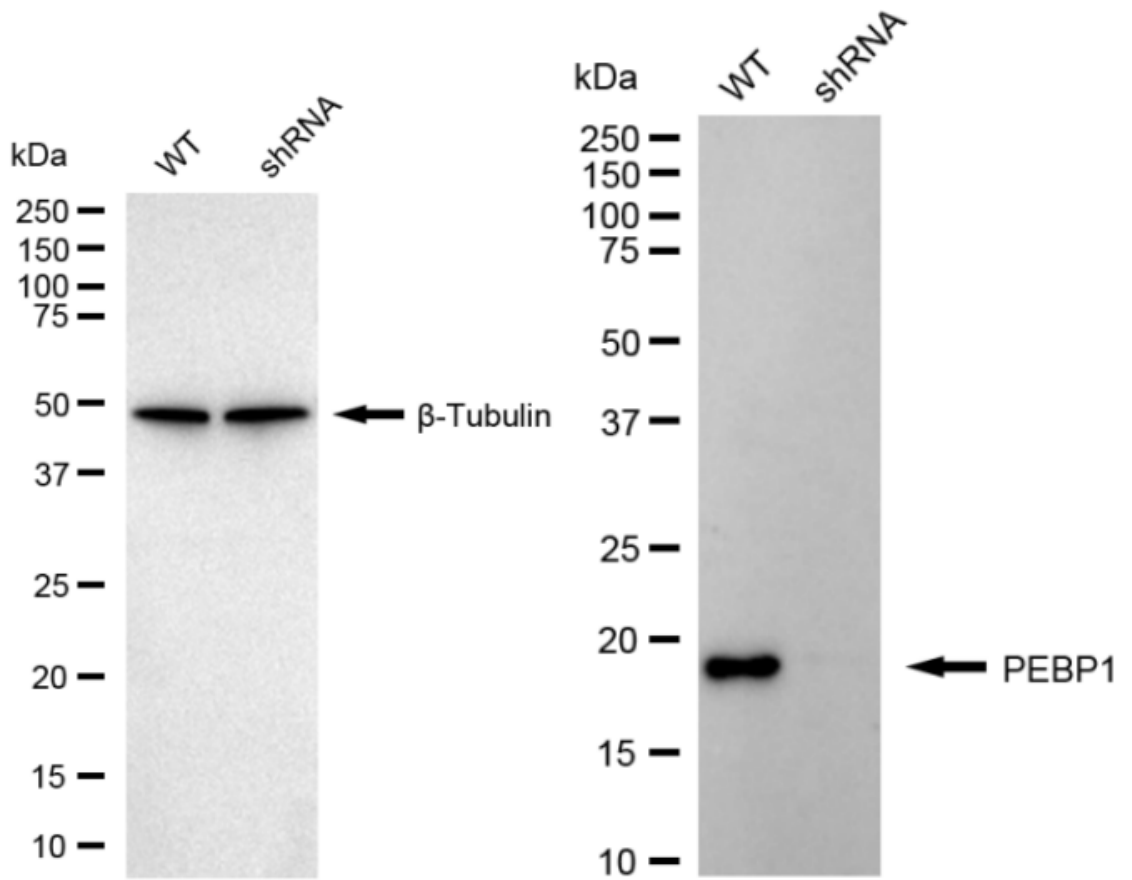
Flow cytometric analysis of PEBP1 expression in HeLa cells using PEBP1 antibody 1:2,000. Green, isotype control; red, PEBP1.



Immunocytochemical staining of HeLa cells with anti-PEBP1 antibody 1:1,000. Nuclei were stained blue with DAPI; PEBP1 was stained magenta with Alexa Fluor® 647. Images were taken using Leica stellaris 5. Protein abundance based on laser Intensity and smart gain: Low. Scale bar: 20 μ m.



Western blotting analysis using anti-PEBP1 antibody 1:5,000 and HRP-conjugated goat anti rabbit secondary antibody 1:20,000 respectively. Image was developed using FeQ™ ECL Substrate Kit .



Western blotting analysis using anti-PEBP1 antibody 1:5,000 and HRP-conjugated goat anti-rabbit secondary antibody 1:20,000 respectively. Image was developed using NaQ™ ECL Substrate Kit .