



SunLong Biotech Co.,LTD
Tel: 0086-571- 56623320 Fax:0086-571- 56623318
E-mail:sales@sunlongbiotech.com
www.sunlongbiotech.com

[KD-Validated] Anti-Pancreatic And Duodenal Homeobox 1 Rabbit Monoclonal Antibody

Cat No.: KD-10677

Aliases:

PDX1; Pancreatic And Duodenal Homeobox 1; IDX-1; STF-1; PDX-1; IUF-1; GSF; Islet/Duodenum Homeobox-1; Insulin Upstream Factor 1; Glucose-Sensitive Factor; MODY4; IPF1; Insulin Promoter Factor 1, Homeodomain Transcription Factor; Somatostatin-Transactivating Factor 1; Pancreas/Duodenum Homeobox Protein 1; Somatostatin Transcription Factor 1; Pancreatic-Duodenal Homeobox Factor 1; Insulin Promoter Factor 1; PAGEN1; IUF1; STF1

Background:

UniProt Entry: [P52945](#);NCBI Gene Entry: [3651](#)

Application Information

Molecular Weight: Predicted, 31 kDa, observed, 42 kDa Clonality: Rabbit monoclonal antibody Clone ID: 24GB1380 Spncies Reactivity: Human, Rat Applications Tested: Western Blotting (WB), Flow Cytometry (FCM)

Immunogen

A synthesized peptide derived from human PDX1

Isotype

Rabbit IgG

Storage Buffer

Supplied in PBS (pH 7.4) containing 50% glycerol, and 0.02% sodium azide.

Storage

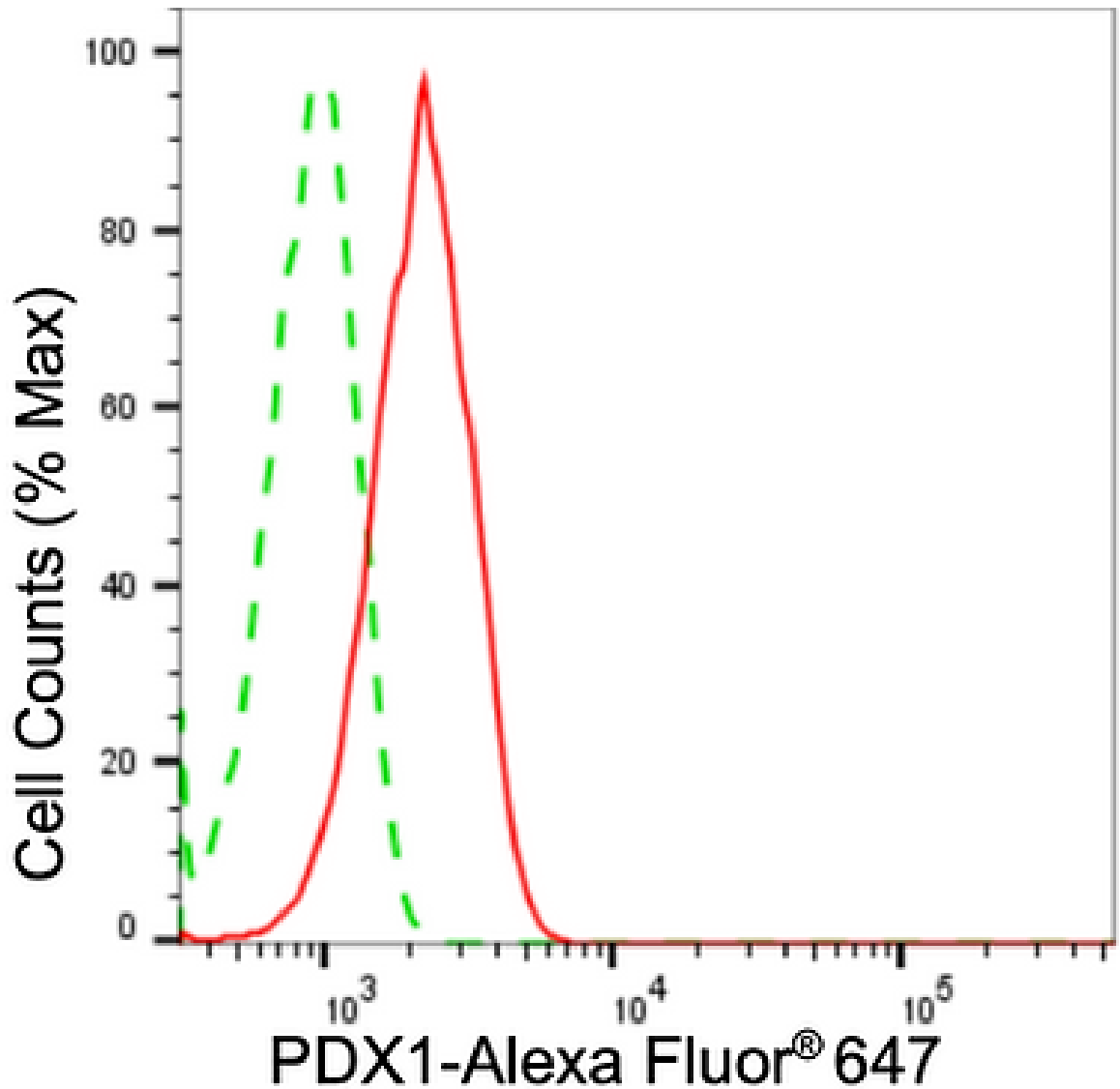
Store at -20 °C for one year.

Recommended Dilutions

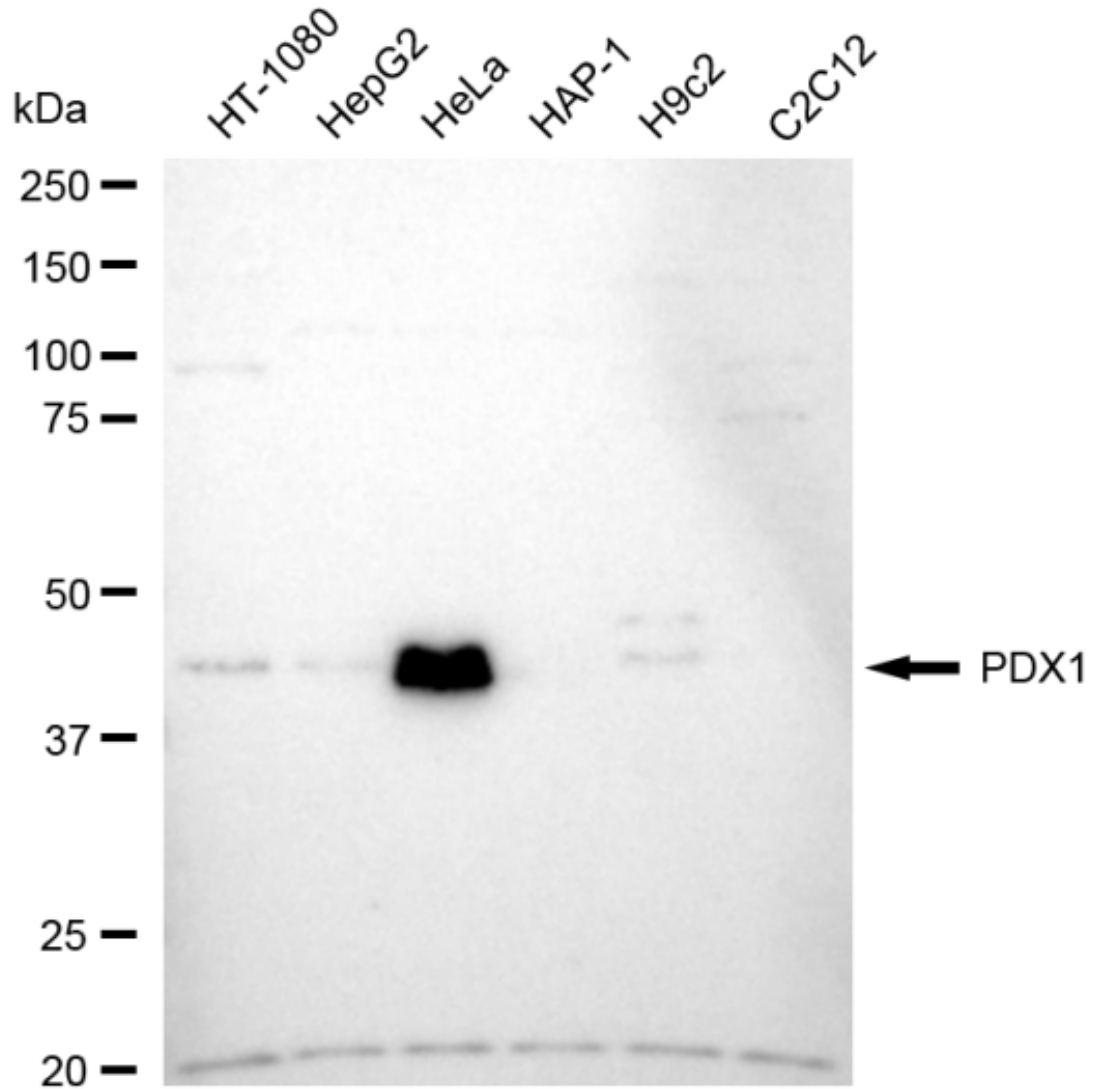
Western Blotting (WB): 1:1,000-1:5,000 Flow Cytometry (FCM): 1:2,000

Protocols

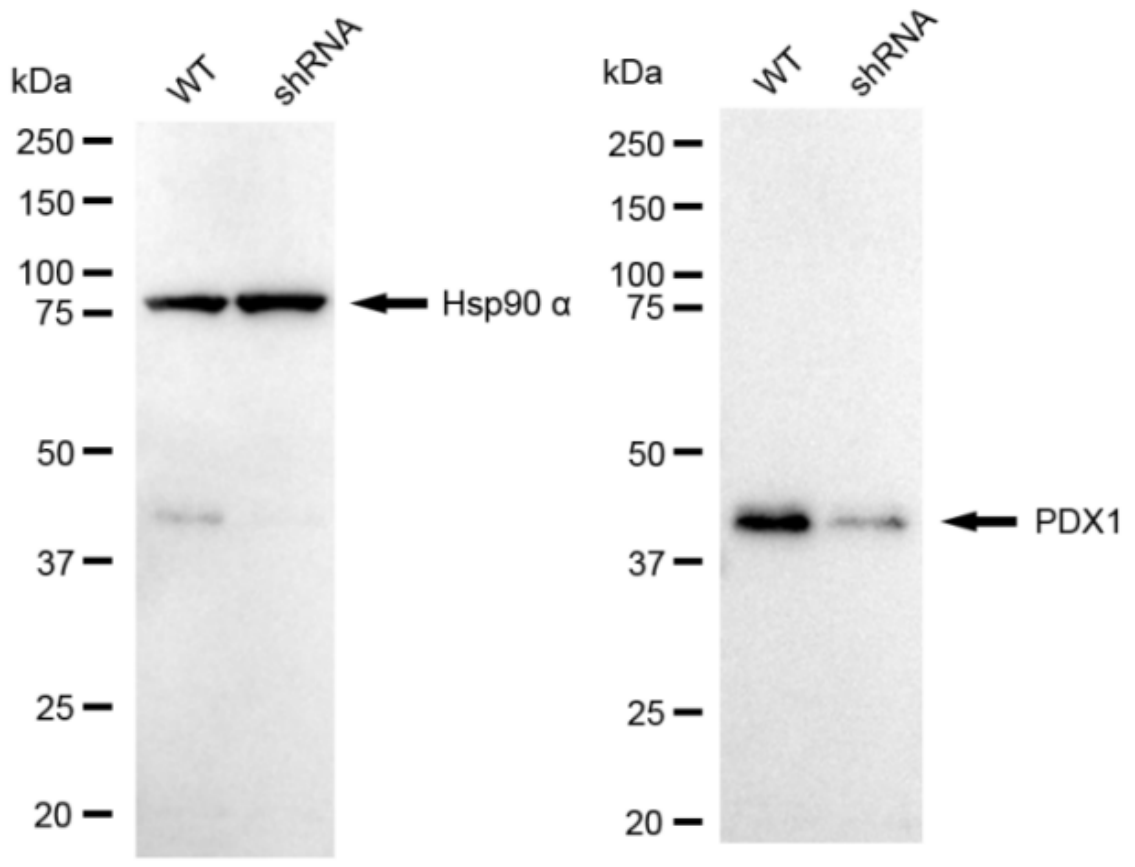
For general and specific antibody protocols please visit our website. Read all instructions before using this product.



Flow cytometric analysis of PDX1 expression in HeLa cells using anti-PDX1 antibody 1:2,000. Green, isotype control; red, PDX1.



Western blotting analysis using anti-PDX1 antibody 1:5,000 and HRP-conjugated goat anti-rabbit secondary antibody 1:20,000 respectively. Image was developed using FeQ™ ECL Substrate Kit .



Western blotting analysis using anti-PDX1 antibody 1:5,000 and HRP-conjugated goat anti-rabbit secondary antibody 1:20,000 respectively. Image was developed using NaQ™ ECL Substrate Kit .