



SunLong Biotech Co.,LTD
Tel: 0086-571- 56623320 Fax:0086-571- 56623318
E-mail:sales@sunlongbiotech.com
www.sunlongbiotech.com

[KD-Validated] Anti-Pyruvate Dehydrogenase Kinase 1 Rabbit Monoclonal Antibody

Cat No.: KD-10674

Aliases:

Pyruvate Dehydrogenase Kinase 1; [Pyruvate Dehydrogenase (Acetyl-Transferring)] Kinase Isozyme 1, Mitochondrial; Pyruvate Dehydrogenase Kinase, Isoenzyme 1; PDH Kinase 1; EC 2.7.11.2; Pyruvate Dehydrogenase (Acetyl-Transferring) Kinase Isozyme 1, Mitochondrial; Mitochondrial Pyruvate Dehydrogenase, Lipoamide, Kinase Isoenzyme 1; Pyruvate Dehydrogenase Kinase, Isozyme 1; Pyruvate Dehydrogenase Kinase Isoform 1; EC 2.7.11; PDHK1

Background:

UniProt Entry: [Q15118](#);NCBI Gene Entry: [5163](#)

Application Information

Molecular Weight: Predicted, 49 kDa, observed, 49 kDa Clonality: Rabbit monoclonal antibody Clone ID: 24GB1190 Species Reactivity: Human, Mouse, Rat Applications Tested: Western Blotting (WB), Flow Cytometry (FCM)

Immunogen

A synthesized peptide derived from human PDK1

Isotype

Rabbit IgG

Storage Buffer

Supplied in PBS (pH 7.4) containing 50% glycerol, and 0.02% sodium azide.

Storage

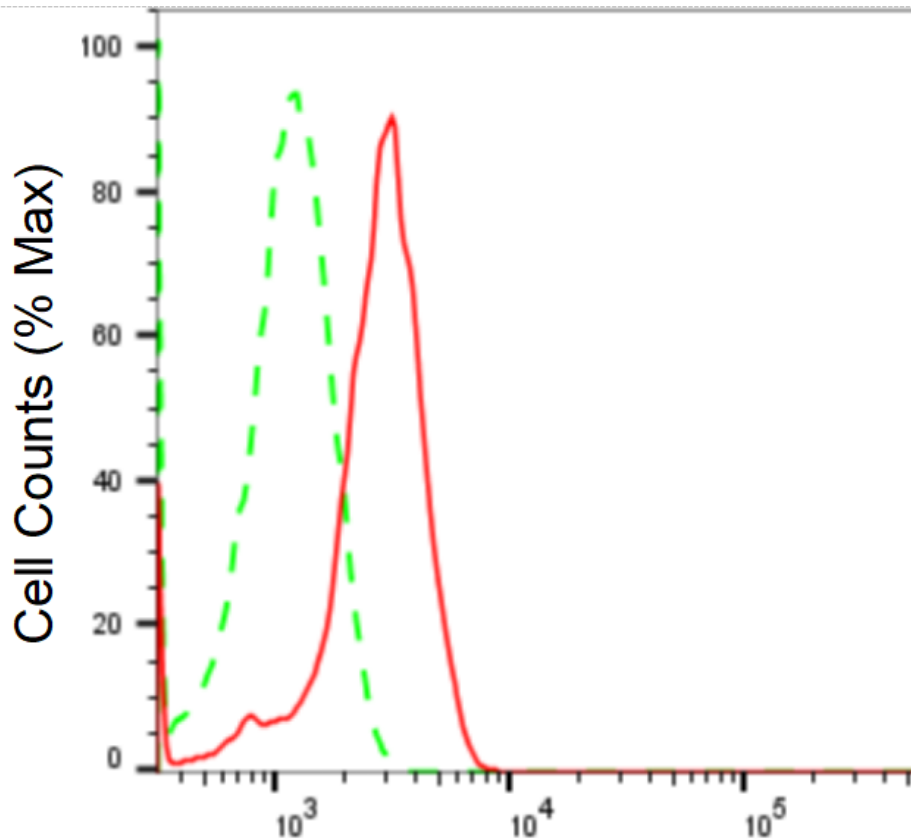
Store at -20 °C for one year.

Recommended Dilutions

Western Blotting (WB): 1:1,000-1:5,000 Flow Cytometry (FCM): 1:2,000

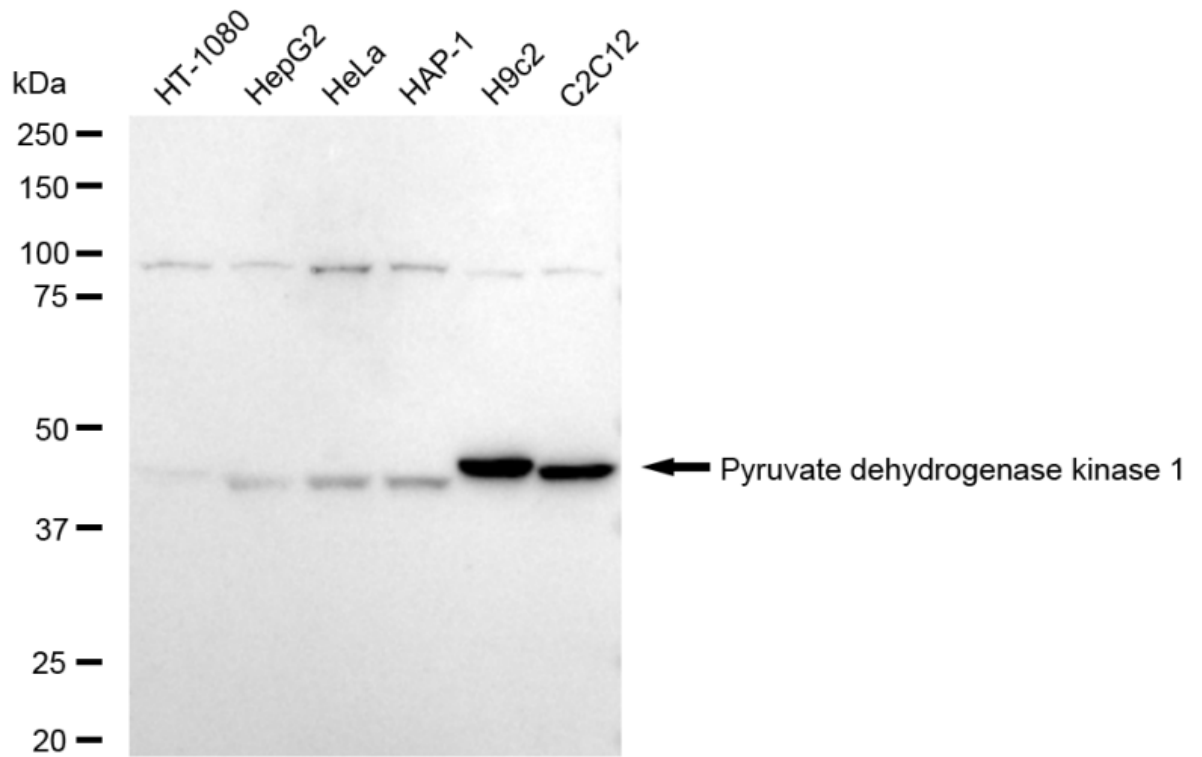
Protocols

For general and specific antibody protocols please visit our website. Read all instructions before using this product.

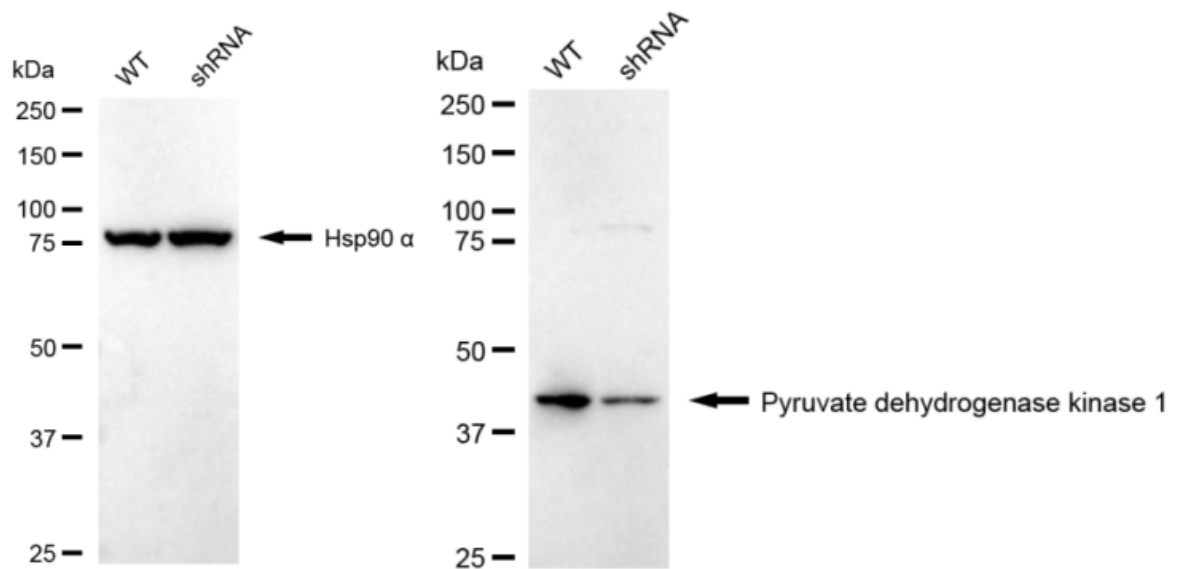


Pyruvate dehydrogenase kinase 1-Alexa Fluor[®] 647

Flow cytometric analysis of Pyruvate dehydrogenase kinase 1 expression in H9c2 cells using anti-Pyruvate dehydrogenase kinase 1 antibody 1:2,000. Green, isotype control; red, Pyruvate dehydrogenase kinase 1.



Western blotting analysis using anti-Pyruvate dehydrogenase kinase 1 antibody 1:5,000 and HRP-conjugated goat anti-rabbit secondary antibody 1:20,000 respectively. Image was developed using FeQ™ ECL Substrate Kit .



Western blotting analysis using anti-Pyruvate dehydrogenase kinase 1 antibody 1:5,000 and HRP-conjugated goat anti-rabbit secondary antibody 1:20,000 respectively. Image was developed using NaQ™ ECL Substrate Kit .