



SunLong Biotech Co.,LTD
Tel: 0086-571- 56623320 Fax:0086-571- 56623318
E-mail:sales@sunlongbiotech.com
www.sunlongbiotech.com

[KD-Validated] Anti-PCYT1A Rabbit Monoclonal Antibody

Cat No.: KD-10673

Aliases:

PCYT1A; Phosphate Cytidylyltransferase 1A, Choline; CTPCT; CCTalpha; PCYT1; CT; Phosphate Cytidylyltransferase 1, Choline, Alpha; CTP:Phosphocholine Cytidylyltransferase-Alpha; Choline-Phosphate Cytidylyltransferase Alpha; CTP:Phosphocholine Cytidylyltransferase A; Choline-Phosphate Cytidylyltransferase A; Phosphorylcholine Transferase Alpha; Phosphorylcholine Transferase A; EC 2.7.7.15 4; CCT-Alpha; CCT A; CT A; Phosphate Cytidylyltransferase 1, Choline, Alpha Isoform; EC 2.7.7; SMDCRD; CCTA; CGL5;CTA

Background:

UniProt Entry: [P49585](#);NCBI Gene Entry: [5130](#)

Application Information

Molecular Weight: Predicted, 42 kDa, observed, 42 kDa Clonality: Rabbit monoclonal antibody Clone ID: 24GB5015 Species Reaceivity: Human, Mouse Applicseions Tsted: Western Blotting (WB), Flow Cytometry (FCM)

Immunogen

A synthesized peptide derived from human CT A

Isotype

Rabbit IgG

Storage Buffer

Supplied in PBS (pH 7.4) containing 50% glycerol, and 0.02% sodium azide.

Storage

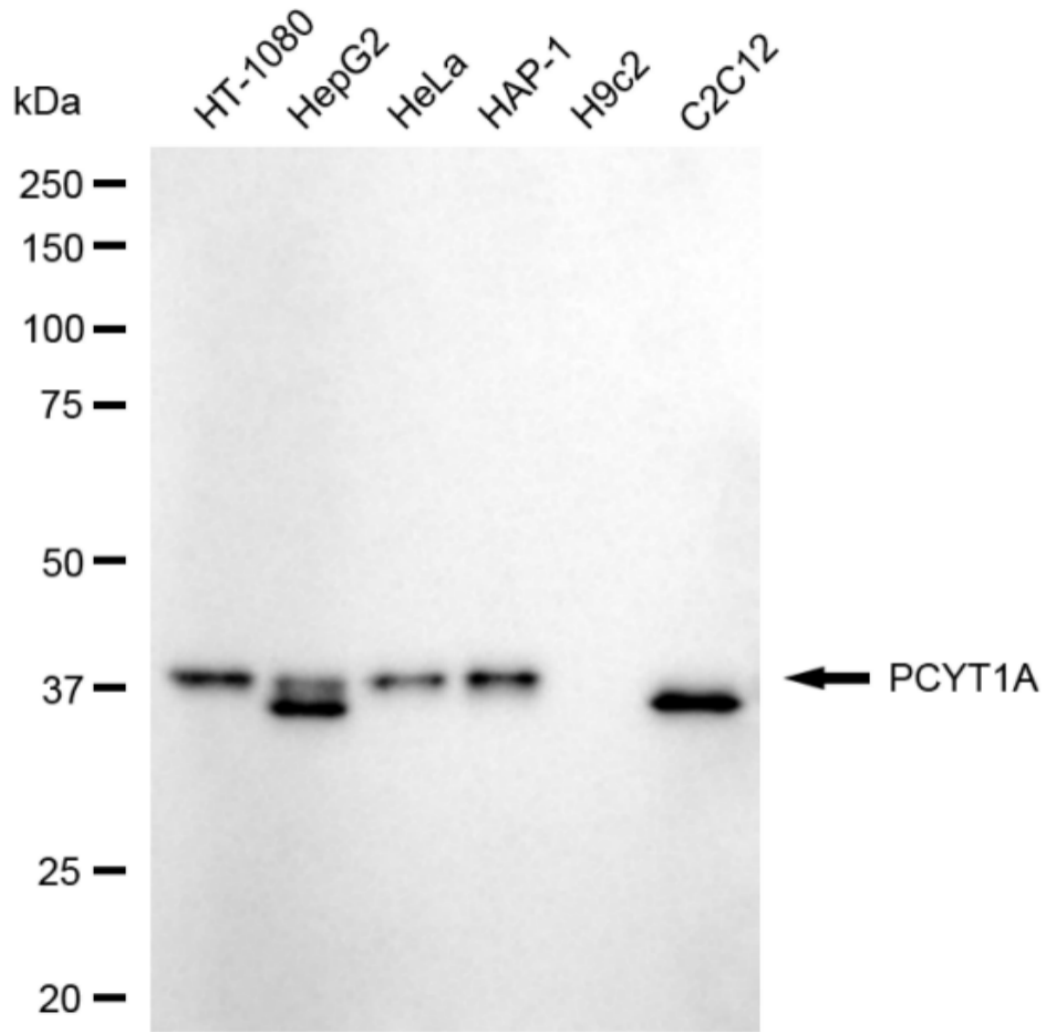
Store at -20 °C for one year.

Recommended Dilutions

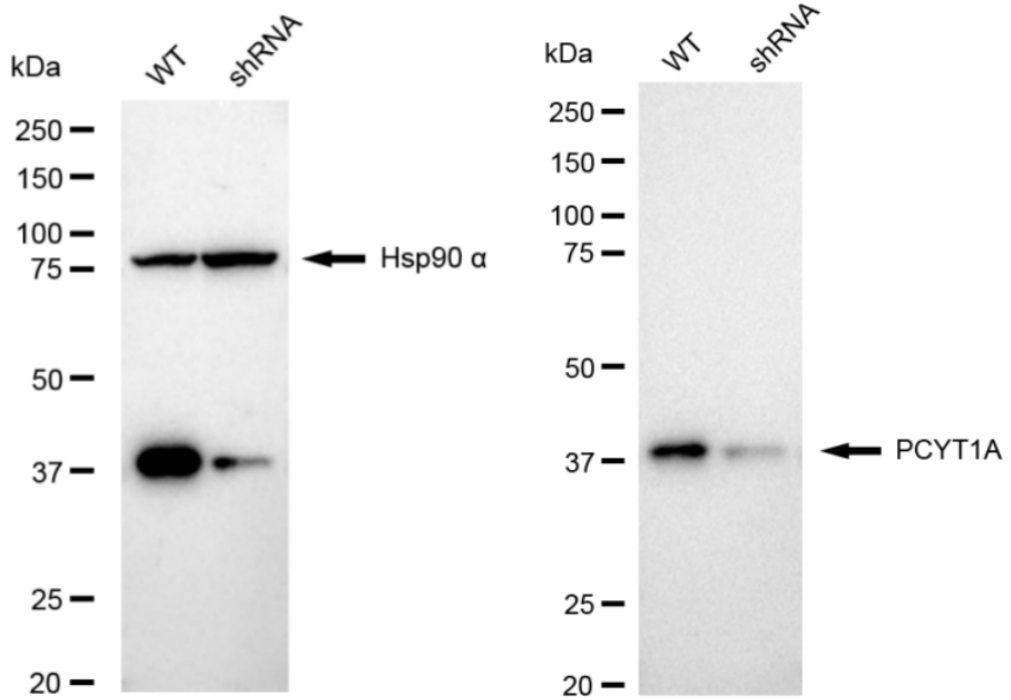
Western Blotting (WB): 1:1,000-1:5,000 Flow Cytometry (FCM): 1:2,000

Protocols

For general and specific antibody protocols please visit our website. Read all instructions before using this product.



Western blotting analysis using anti-PCYT1A antibody 1:5,000 and HRP-conjugated goat anti-rabbit secondary antibody 1:20,000 respectively. Image was developed using FeQTM ECL Substrate Kit .



Western blotting analysis using anti-PCYT1A antibody 1:5,000 and HRP-conjugated goat anti-rabbit secondary antibody 1:20,000 respectively. Image was developed using NaQ™ ECL Substrate Kit 1:2,000. Green, isotype control; red, PCYT1A.