



SunLong Biotech Co.,LTD
Tel: 0086-571- 56623320 Fax:0086-571- 56623318
E-mail:sales@sunlongbiotech.com
www.sunlongbiotech.com

[KD-Validated] Anti-PCBP2 Rabbit Monoclonal Antibody

Cat No.: KD-10672

Aliases:

PCBP2; Poly(RC) Binding Protein 2; Poly(RC)-Binding Protein 2; HNRNPE2; HNRPE2; Heterogeneous Nuclear Ribonucleoprotein E2; Heterogenous Nuclear Ribonucleoprotein E2; Alpha-CP2; HnRNP-E2; HnRNP E2; Epididymis Secretory Sperm Binding Protein; HNRNP-E2

Background:

UniProt Entry: [Q15366](#);NCBI Gene Entry: [5094](#)

Application Information

Molecular Weight: Predicted, 34-39 kDa, observed, 35,39 kDa Clonality: Rabbit monoclonal antibody Clone ID: 23GB2110 Species Reactivity: Human, Mouse, Rat Applications Tested: Western Blotting (WB), Flow Cytometry (FCM), Immunocytochemistry (IC)

Immunogen

A synthesized peptide derived from human PCBP2

Isotype

Rabbit IgG

Storage Buffer

Supplied in PBS (pH 7.4) containing 50% glycerol, and 0.02% sodium azide.

Storage

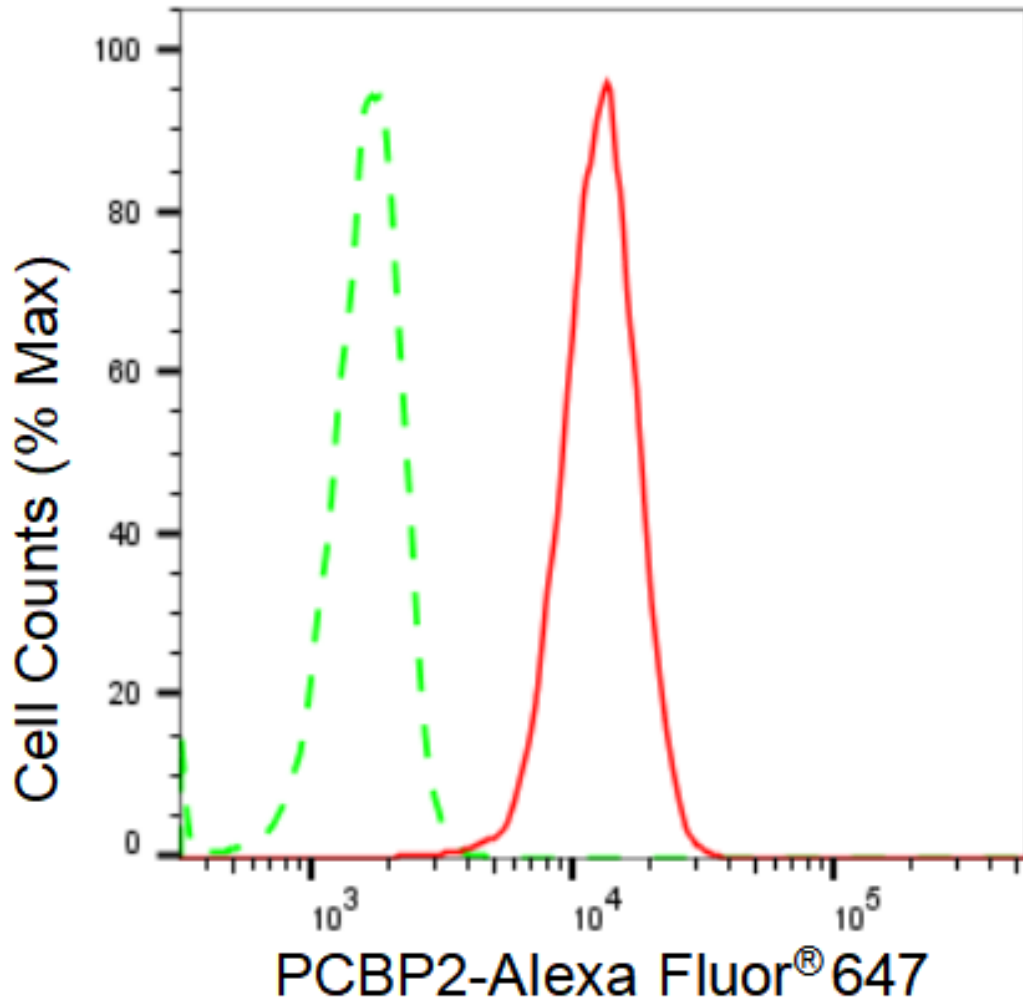
Store at -20 °C for one year.

Recommended Dilutions

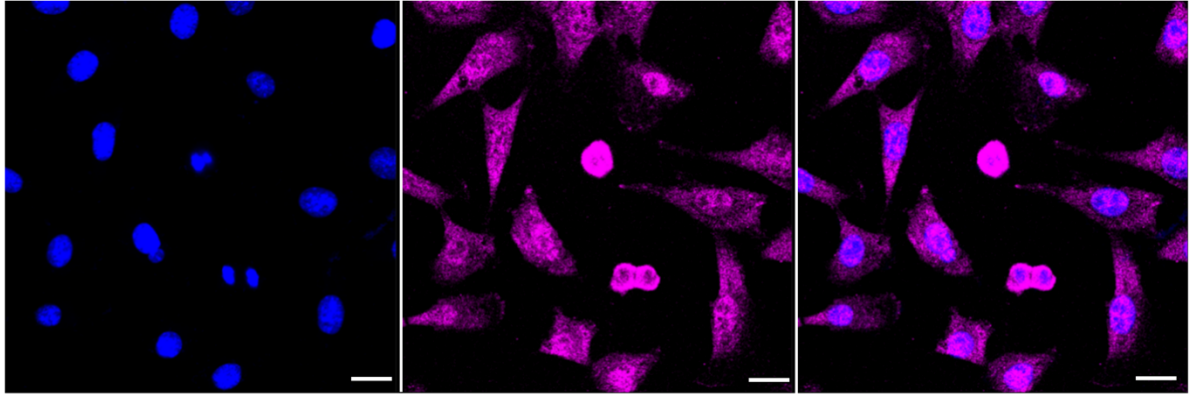
Western Blotting (WB): 1:1,000-1:5,000 Flow Cytometry (FCM): 1:2,000
Immunocytochemistry (IC): 1:1,000

Protocols

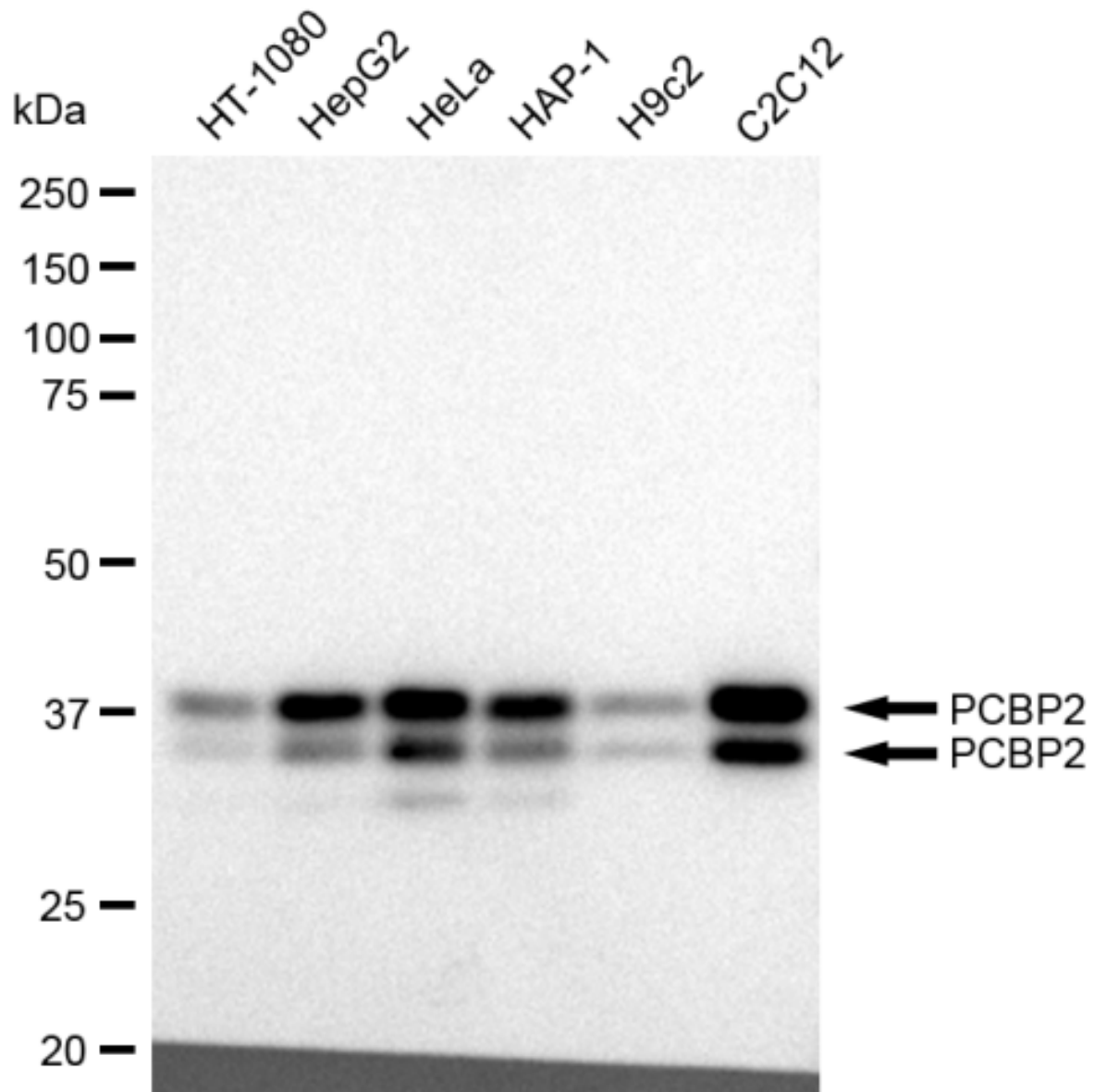
For general and specific antibody protocols please visit our website. Read all instructions before using this product.



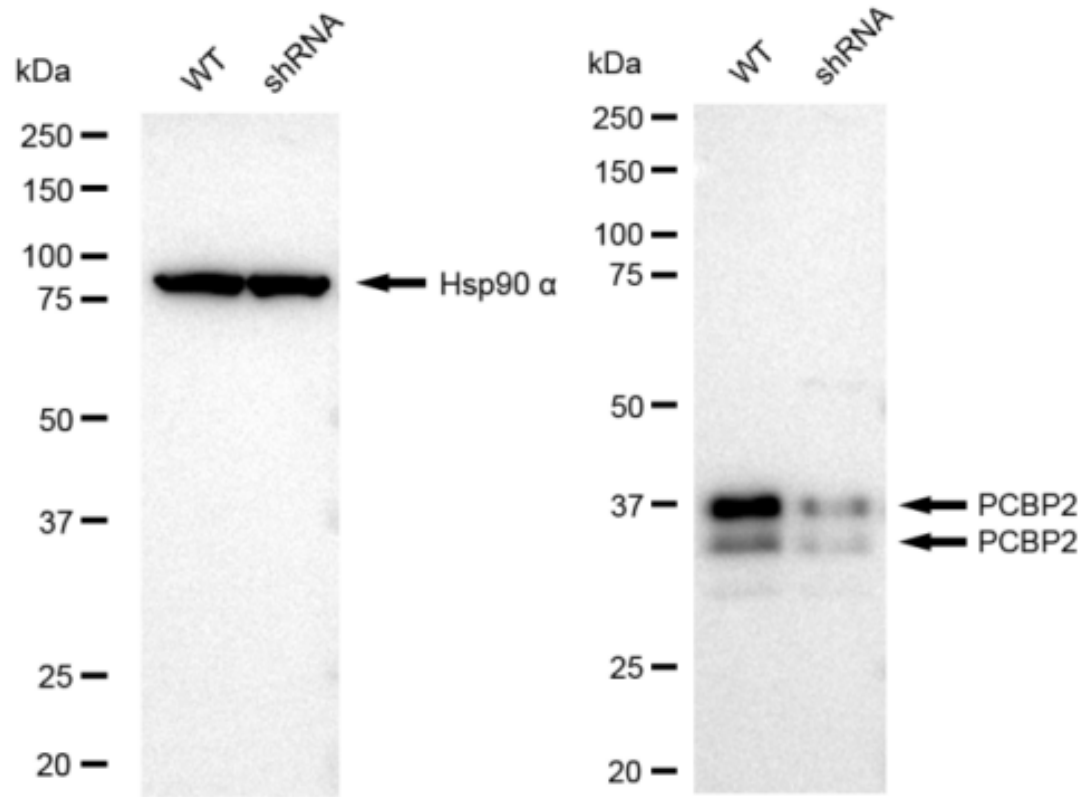
Flow cytometric analysis of PCBP2 expression in C2C12 cells using PCBP2 antibody 1:2,000. Green, isotype control; red, PCBP2.



Immunocytochemical staining of C2C12 cells with PCBP2 antibody 1:1,000. Nuclei were stained blue with DAPI; PCBP2 was stained magenta with Alexa Fluor® 647. Images were taken using Leica stellaris 5. Protein abundance based on laser Intensity and smart gain: Medium. Scale bar: 20 μ m.



Western blotting analysis using anti-PCBP2 antibody 1:5,000 and HRP-conjugated goat anti-rabbit secondary antibody 1:20,000 respectively. Image was developed using FeQ™ ECL Substrate Kit .



Western blotting analysis using anti-PCBP2 antibody 1:5,000 and HRP-conjugated goat anti-rabbit secondary antibody 1:20,000 respectively. Image was developed using FeQ™ ECL Substrate Kit .