



SunLong Biotech Co.,LTD
Tel: 0086-571- 56623320 Fax:0086-571- 56623318
E-mail:sales@sunlongbiotech.com
www.sunlongbiotech.com

[KD-Validated] Anti-PCBD1 Rabbit Monoclonal Antibody

Cat No.: KD-10671

Aliases:

Pterin-4 Alpha-Carbinolamine Dehydratase 1; PCD; DCOH; PCBD; 6-Pyruvoyl-Tetrahydropterin Synthase/Dimerization Cofactor Of Hepatocyte Nuclear Factor 1 Alpha (TCF1); Pterin-4 Alpha-Carbinolamine Dehydratase/Dimerization Cofactor Of Hepatocyte Nuclear Factor 1 Alpha; Phenylalanine Hydroxylase-Stimulating Protein; 4-Alpha-Hydroxy-Tetrahydropterin Dehydratase; Pterin-4-Alpha-Carbinolamine Dehydratase; Dimerizing Cofactor For HNF1; EC 4.2.1.96; PHS; Pterin-4 Alpha-Carbinolamine Dehydratase/Dimerization Cofactor Of Hepatocyte Nuclear Factor 1 Alpha (TCF1); Pterin-4a-Carbinolamine Dehydratase (Dimerization Cofactor Of Hepatic Nuclear Factor 1-Alpha); Dimerization Cofactor Of Hepatocyte Nuclear Factor 1-Alpha; Pterin-4-Alpha Carbinolamine Dehydratase; Pterin Carbinolamine Dehydratase; Dimerization Cofactor Of HNF1; DCoH

Background:

UniProt Entry: [PKD-10091](#);NCBI Gene Entry: [5092](#)

Application Information

Molecular Weight: Predicted, 12 kDa, observed, 12 kDa Clonality: Rabbit monoclonal antibody Clone ID: 24GB785 Species Reactivity: Human Applications Used: Western Blotting (WB), Immunocytochemistry (IC)

Immunogen

A synthesized peptide derived from human PCBD1

Isotype

Rabbit IgG

Storage Buffer

Supplied in PBS (pH 7.4) containing 50% glycerol, and 0.02% sodium azide.

Storage

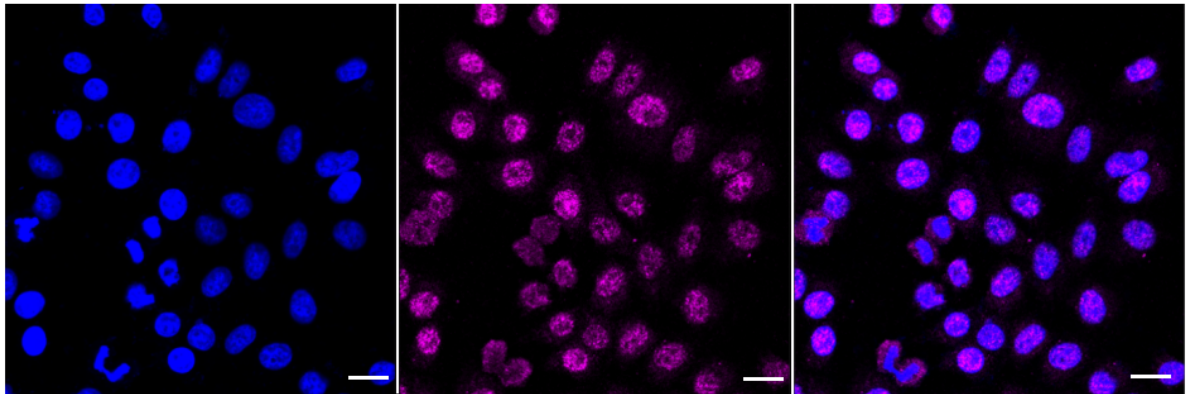
Store at -20 °C for one year.

Recommended Dilutions

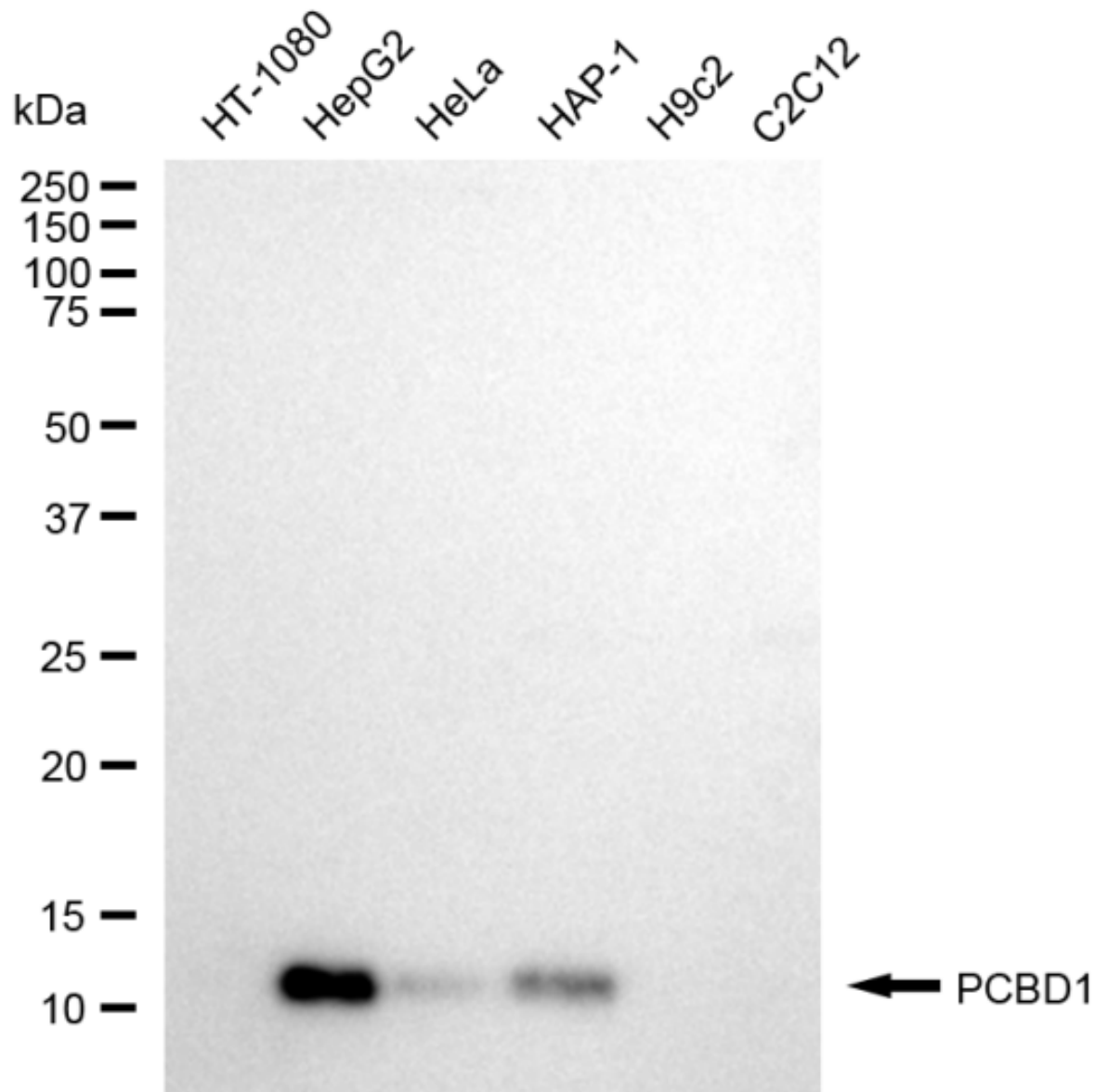
Western Blotting (WB): 1:1,000-1:5,000 Immunocytochemistry (IC): 1:1,000

Protocols

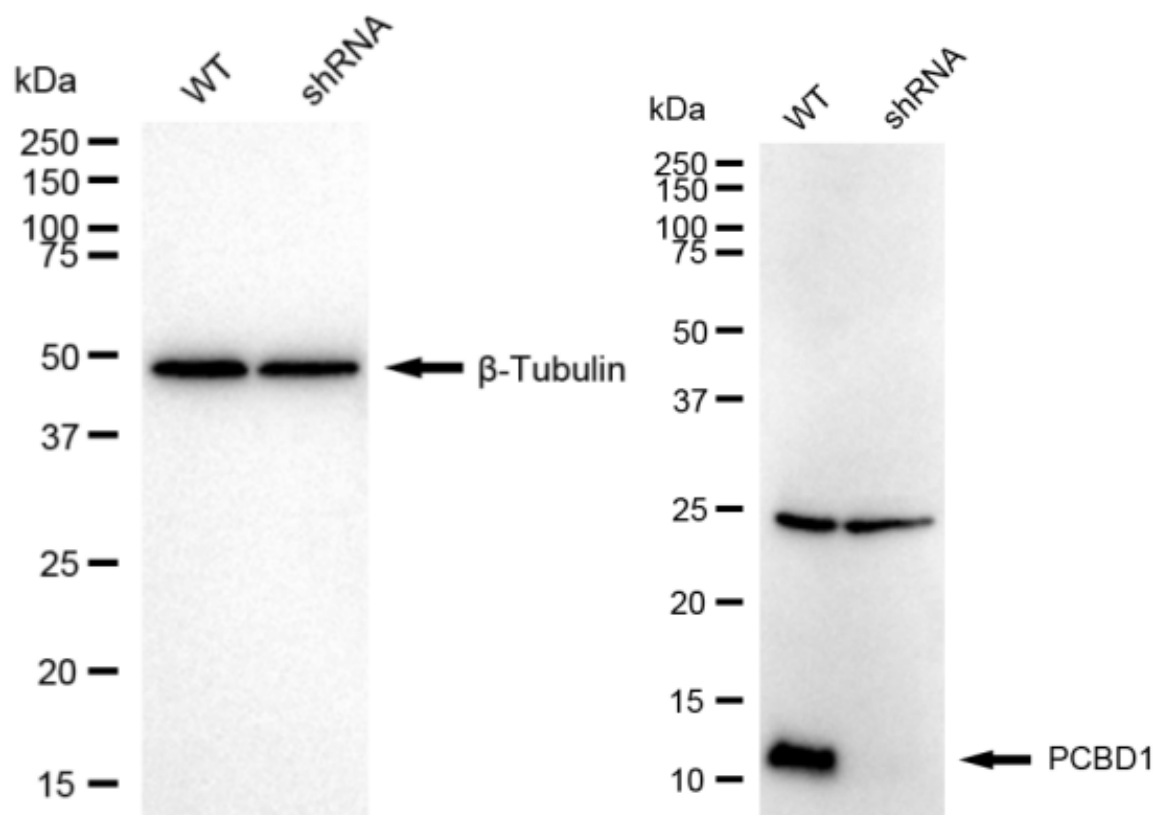
For general and specific antibody protocols please visit our website. Read all instructions before using this product.



Immunocytochemical staining of HepG2 cells with anti-PCBD1 antibody 1:1,000. Nuclei were stained blue with DAPI; PCBD1 was stained magenta with Alexa Fluor® 647. Images were taken using Leica stellaris 5. Protein abundance based on laser Intensity and smart gain: Medium. Scale bar: 20 µm.



Western blotting analysis using anti-PCBD1 antibody 1:5,000 and HRP-conjugated goat anti-rabbit secondary antibody 1:20,000 respectively. Image was developed using FeQ™ ECL Substrate Kit .



Western blotting analysis using anti-PCBD1 antibody 1:5,000 and HRP-conjugated goat anti-rabbit secondary antibody 1:20,000 respectively. Image was developed using NaQ™ ECL Substrate Kit .