



SunLong Biotech Co.,LTD
Tel: 0086-571- 56623320 Fax:0086-571- 56623318
E-mail:sales@sunlongbiotech.com
www.sunlongbiotech.com

[KD-Validated] Anti-Paired box 6 Rabbit Monoclonal Antibody

Cat No.: KD-10669

Aliases:

Paired Box 6; D11S812E; WAGR; AN2; AN; Paired Box Protein Pax-6; Aniridia Type II Protein; Oculorhombin; Aniridia 1; Aniridia 2; AN1; Paired Box Gene 6 (Aniridia, Keratitis); Paired Box 6 PAX6A-ASdel6-AS7 Isoform; Paired Box 6 PAX6A-ASdel6 Isoform; Paired Box 6 PAX6B-ASdel6 Isoform; Paired Box 6 PAX6A-Del6 Isoform; Paired Box 6 PAX6-12a Isoform; Paired Box 6 PAX6D Isoform; Paired Box Homeotic Gene-6; Alternative Protein PAX6; Aniridia, Keratitis; ASGD5; FVH1; MGDA;

Background:

UniProt Entry: [P26367](#);NCBI Gene Entry: [5080](#)

Application Information

Molecular Weight: Predicted, 55 kDa, observed, 47 kDa Clonality: Rabbit monoclonal antibody Clone ID: 23GB2875 Species Reactivity: Human Applications Used: Western Blotting (WB), Flow Cytometry (FCM), Immunocytochemistry (IC)

Immunogen

A synthesized peptide derived from human PAX6

Isotype

Rabbit IgG

Storage Buffer

Supplied in PBS (pH 7.4) containing 50% glycerol, and 0.02% sodium azide.

Storage

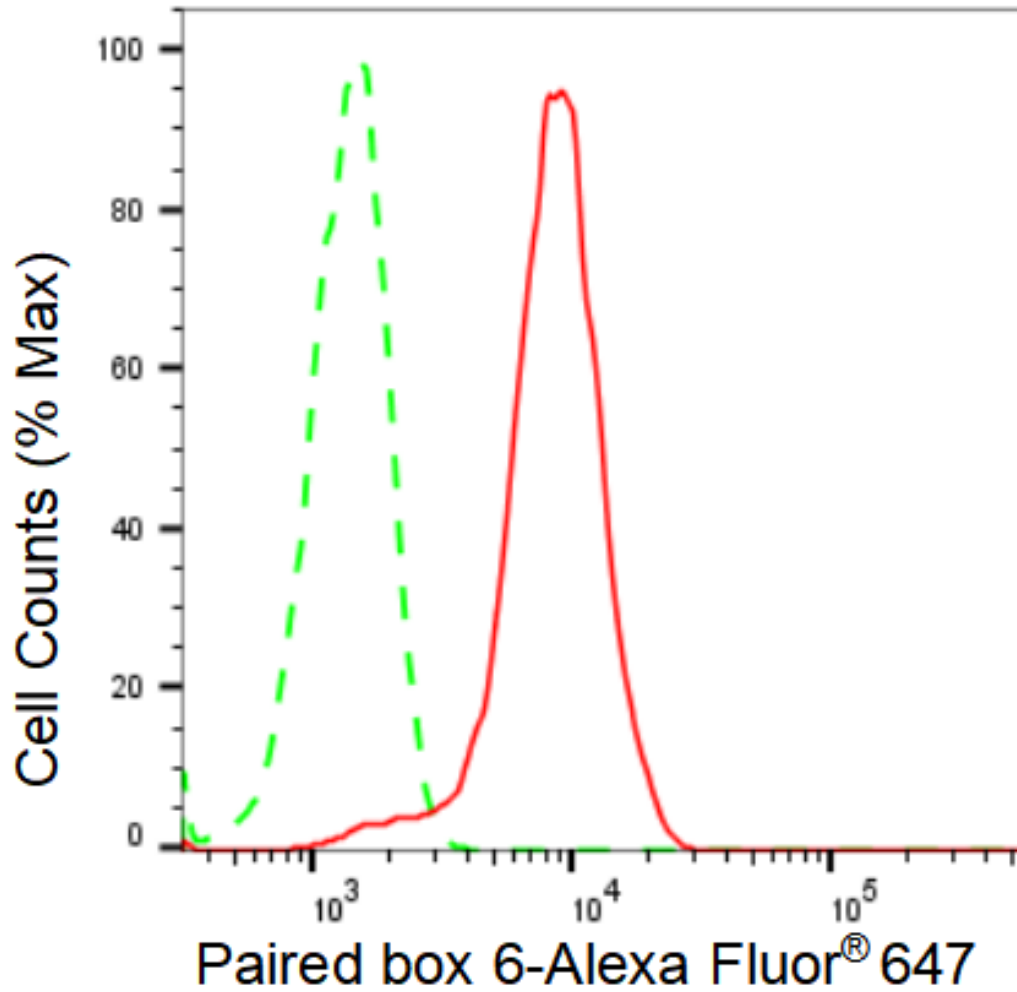
Store at -20 °C for one year.

Recommended Dilutions

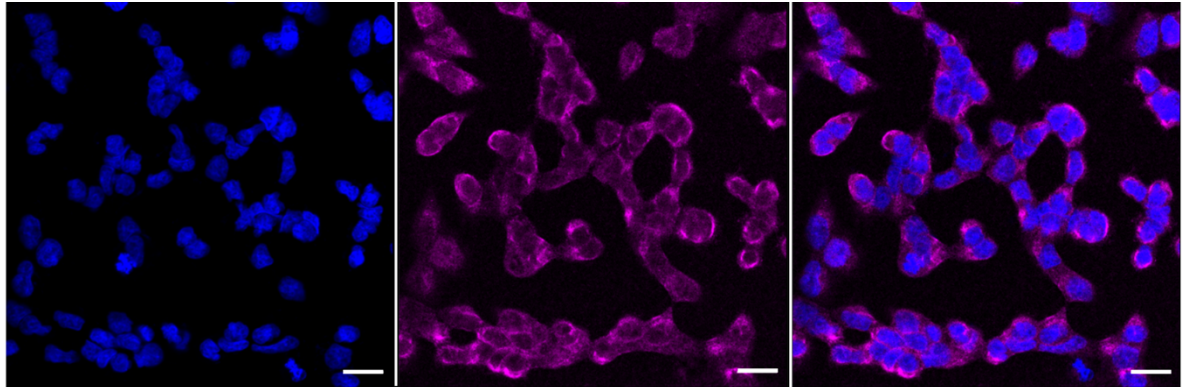
Western Blotting (WB): 1:1,000-1:5,000 Flow Cytometry (FCM): 1:2,000
Immunocytochemistry (IC): 1:1,000

Protocols

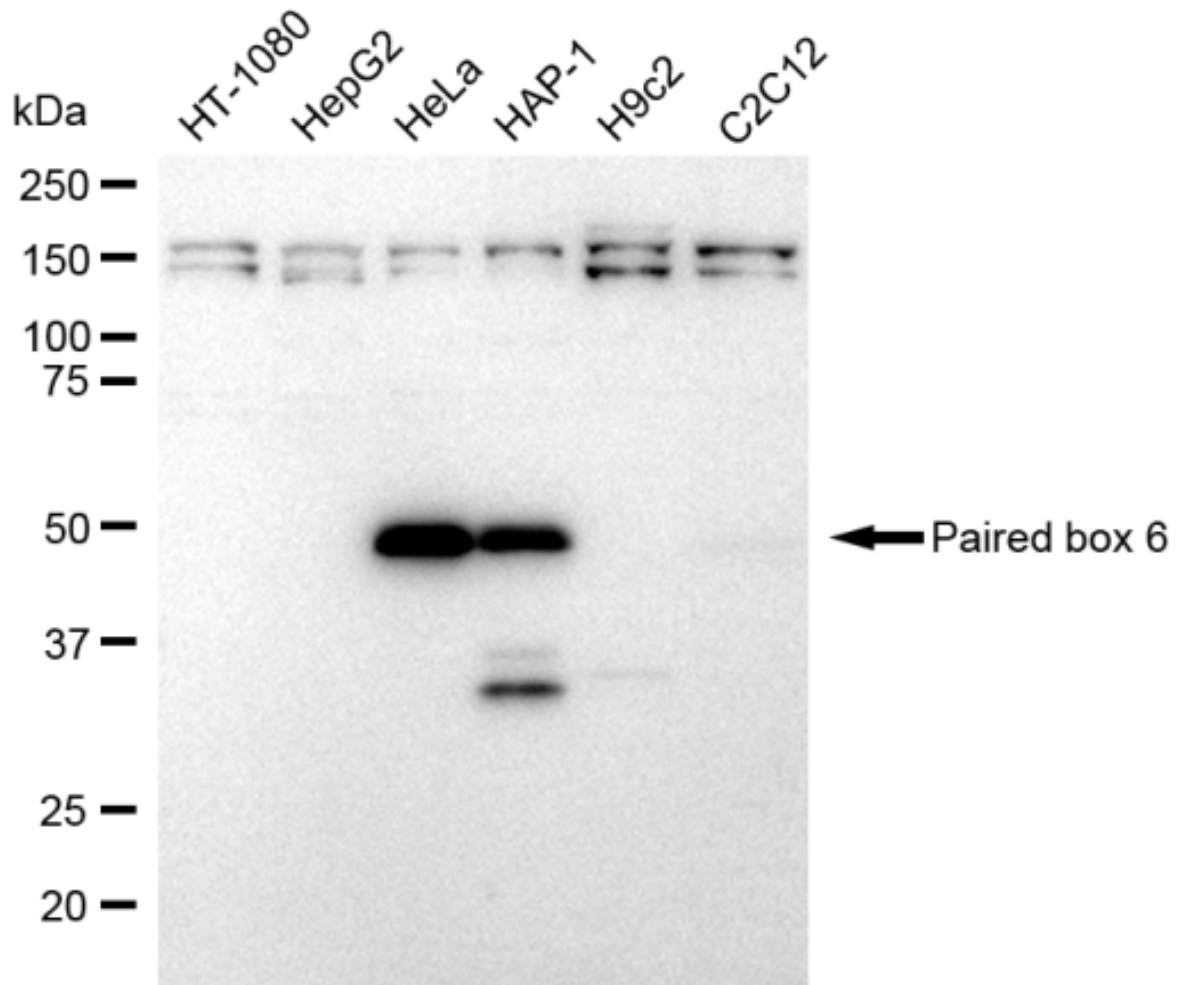
For general and specific antibody protocols please visit our website. Read all instructions before using this product.



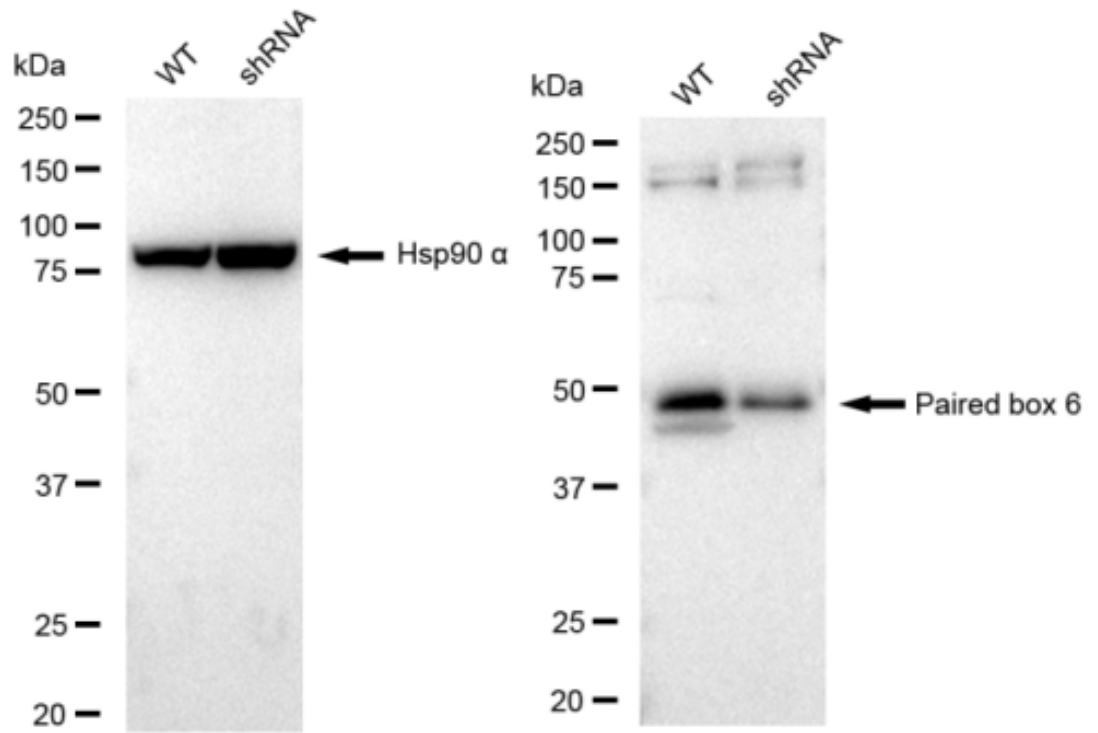
Flow cytometric analysis of Paired box 6 expression in HeLa cells using Paired box 6 antibody 1:2,000. Green, isotype control; red, Paired box 6.



Immunocytochemical staining of HeLa cells with Paired box 6 antibody 1:1,000. Nuclei were stained blue with DAPI; Paired box 6 was stained magenta with Alexa Fluor® 647. Images were taken using Leica stellaris 5. Protein abundance based on laser Intensity and smart gain: Medium. Scale bar: 20 μ m.



Western blotting analysis using anti-Paired box 6 antibody 1:5,000 and HRP-conjugated goat anti-rabbit secondary antibody 1:20,000 respectively. Image was developed using FeQ™ ECL Substrate Kit .



Western blotting analysis using anti-Paired box 6 antibody 1:5,000 and HRP-conjugated goat anti-rabbit secondary antibody 1:20,000 respectively. Image was developed using FeQ™ ECL Substrate Kit .