



SunLong Biotech Co.,LTD  
Tel: 0086-571- 56623320 Fax:0086-571- 56623318  
E-mail:sales@sunlongbiotech.com  
www.sunlongbiotech.com

## **[KD-Validated] Anti-Pro-Apoptotic WT1 Regulator Rabbit Monoclonal Antibody**

Cat No.: KD-10668

### **Aliases:**

PAWR; Pro-Apoptotic WT1 Regulator; Par-4; PAR4; PRKC Apoptosis WT1 Regulator Protein; PRKC, Apoptosis, WT1, Regulator; Prostate Apoptosis Response-4; Prostate Apoptosis Response Protein PAR-4; Prostate Apoptosis Response Protein 4; Prostate Apoptosis Response 4 Protein; Transcriptional Repressor PAR4; WT1-Interacting Protein

### **Background:**

UniProt Entry: [Q961Z0](#);NCBI Gene Entry: [5074](#)

### **Application Information**

Molecular Weight: Predicted, 37 kDa, observed, 41 kDa Clonality: Rabbit monoclonal antibody Clone ID: 24GB5010 Species Reactivity: Human, Mouse, Rat Applications Tested: Western Blotting (WB), Flow Cytometry (FCM)

### **Immunogen**

A synthesized peptide derived from human PAR4

### **Isotype**

Rabbit IgG

### **Storage Buffer**

Supplied in PBS (pH 7.4) containing 50% glycerol, and 0.02% sodium azide.

### Storage

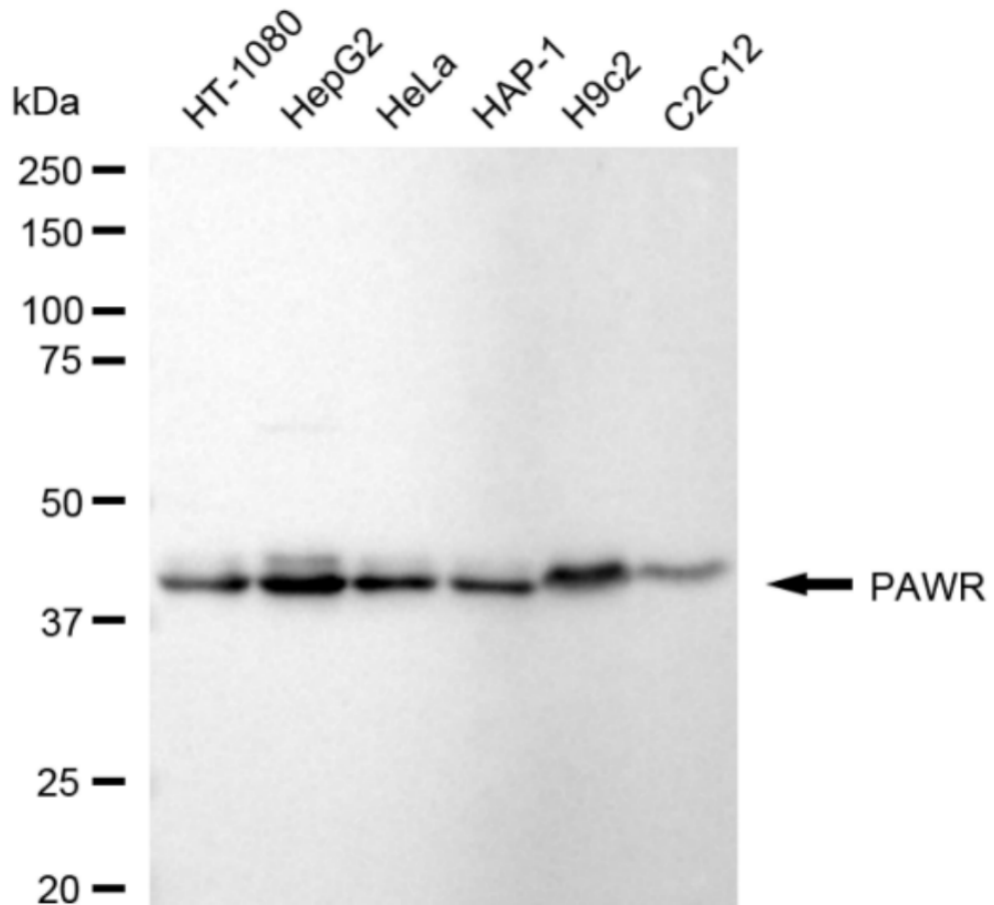
Store at -20 °C for one year.

### Recommended Dilutions

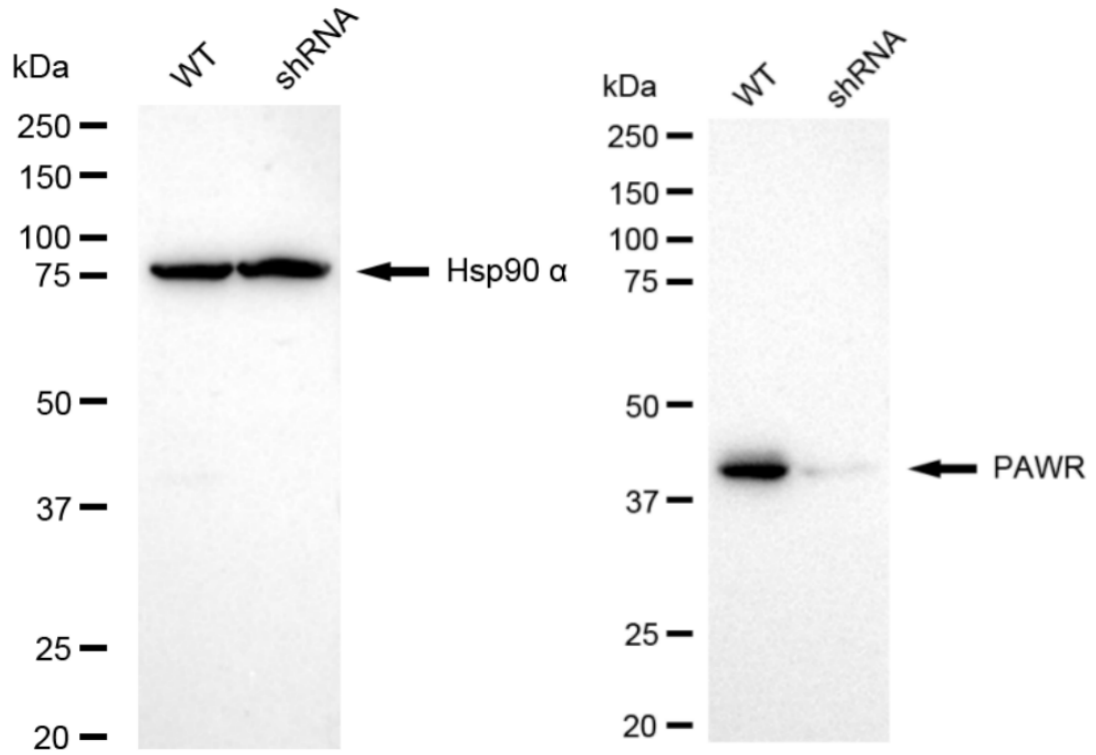
Western Blotting (WB): 1:1,000-1:5,000 Flow Cytometry (FCM): 1:2,000

### Protocols

For general and specific antibody protocols please visit our website. Read all instructions before using this product.



Western blotting analysis using anti-PAWR antibody 1:5,000 and HRP-conjugated goat anti-rabbit secondary antibody 1:20,000 respectively. Image was developed using FeQTM ECL Substrate Kit .



Western blotting analysis using anti-PAWR antibody 1:5,000 and HRP-conjugated goat anti-rabbit secondary antibody 1:20,000 respectively. Image was developed using NaQ™ ECL Substrate Kit 1:2,000. Green, isotype control; red, PAWR.