



SunLong Biotech Co.,LTD
Tel: 0086-571- 56623320 Fax:0086-571- 56623318
E-mail:sales@sunlongbiotech.com
www.sunlongbiotech.com

[KD-Validated] Anti-Parkinsonism associated deglycase Rabbit Monoclonal Antibody

Cat No.: KD-10667

Aliases:

PARK7; Parkinsonism Associated Deglycase; DJ-1; GATD2; DJ1; Parkinson Disease (Autosomal Recessive, Early Onset) 7; Protein/Nucleic Acid Deglycase DJ-1; Parkinson Disease Protein 7; Parkinson Protein 7; Maillard Deglycase; Oncogene DJ1; Protein DJ-1; Epididymis Secretory Sperm Binding Protein Li 67p; Parkinsonism-Associated Deglycase; Protein Deglycase DJ-1; EC 3.5.1.124; EC 3.1.2.-; EC 3.5.1.-; HEL-S-67p

Background:

UniProt Entry: [Q99497](#);NCBI Gene Entry: [11315](#)

Application Information

Molecular Weight: Predicted, 20 kDa, observed, 20 kDa Clonality: Rabbit monoclonal antibody Clone ID: 23GB1955 Species Reactivity: Human, Mouse, Rat Applications Tested: Western Blotting (WB), Flow Cytometry (FCM), Immunocytochemistry (IC)

Immunogen

A synthesized peptide derived from human PARK7

Isotype

Rabbit IgG

Storage Buffer

Supplied in PBS (pH 7.4) containing 50% glycerol, and 0.02% sodium azide.

Storage

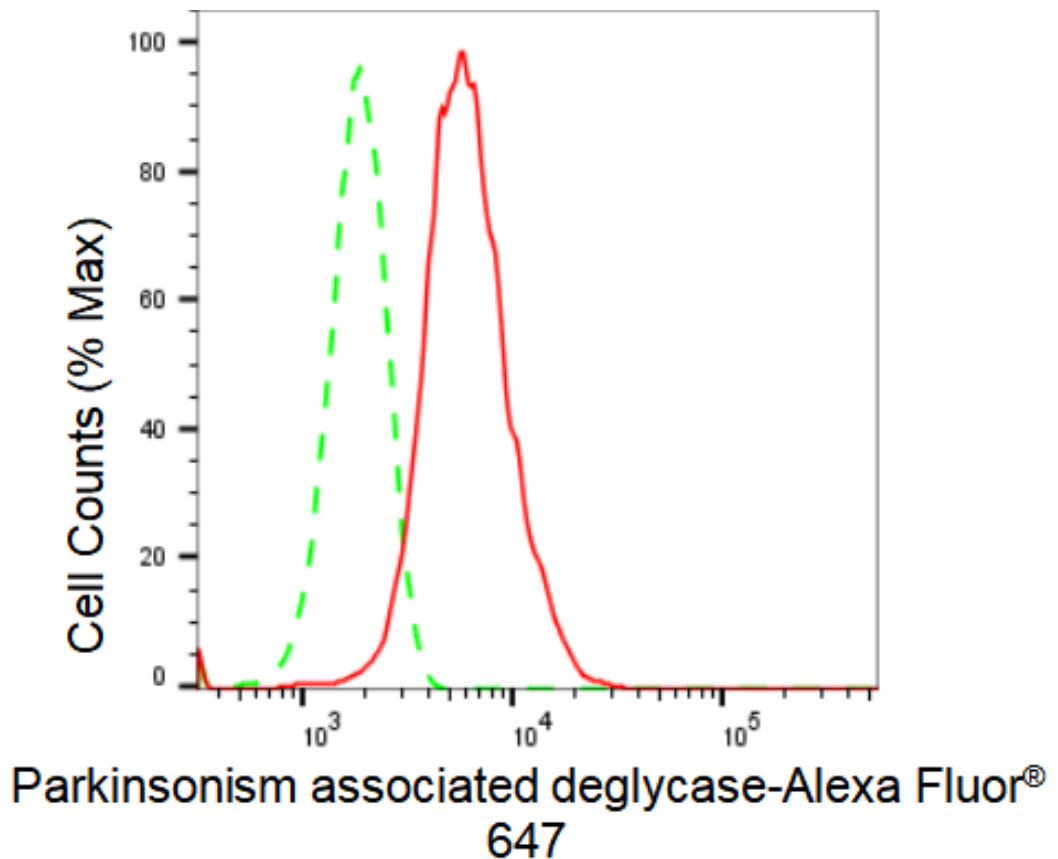
Store at -20 °C for one year.

Recommended Dilutions

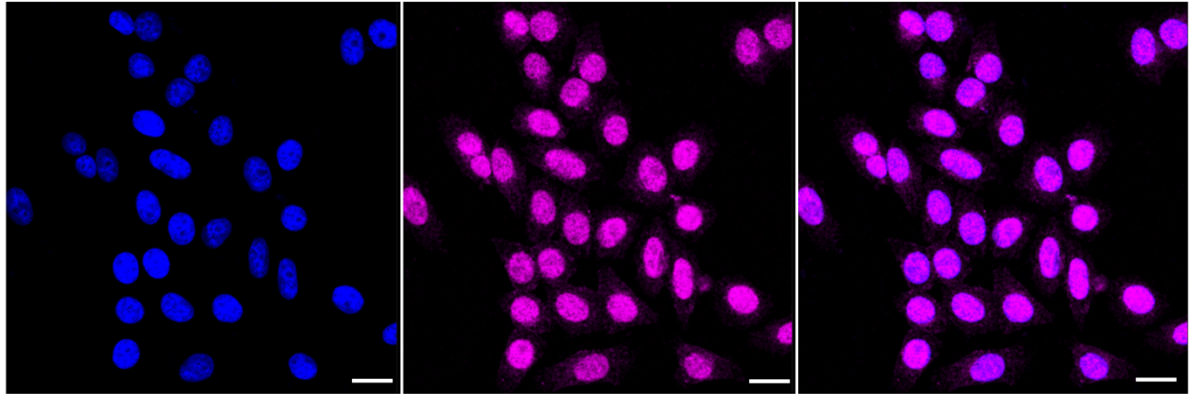
Western Blotting (WB): 1:1,000-1:5,000 Flow Cytometry (FCM): 1:2,000
Immunocytochemistry (IC): 1:1,000

Protocols

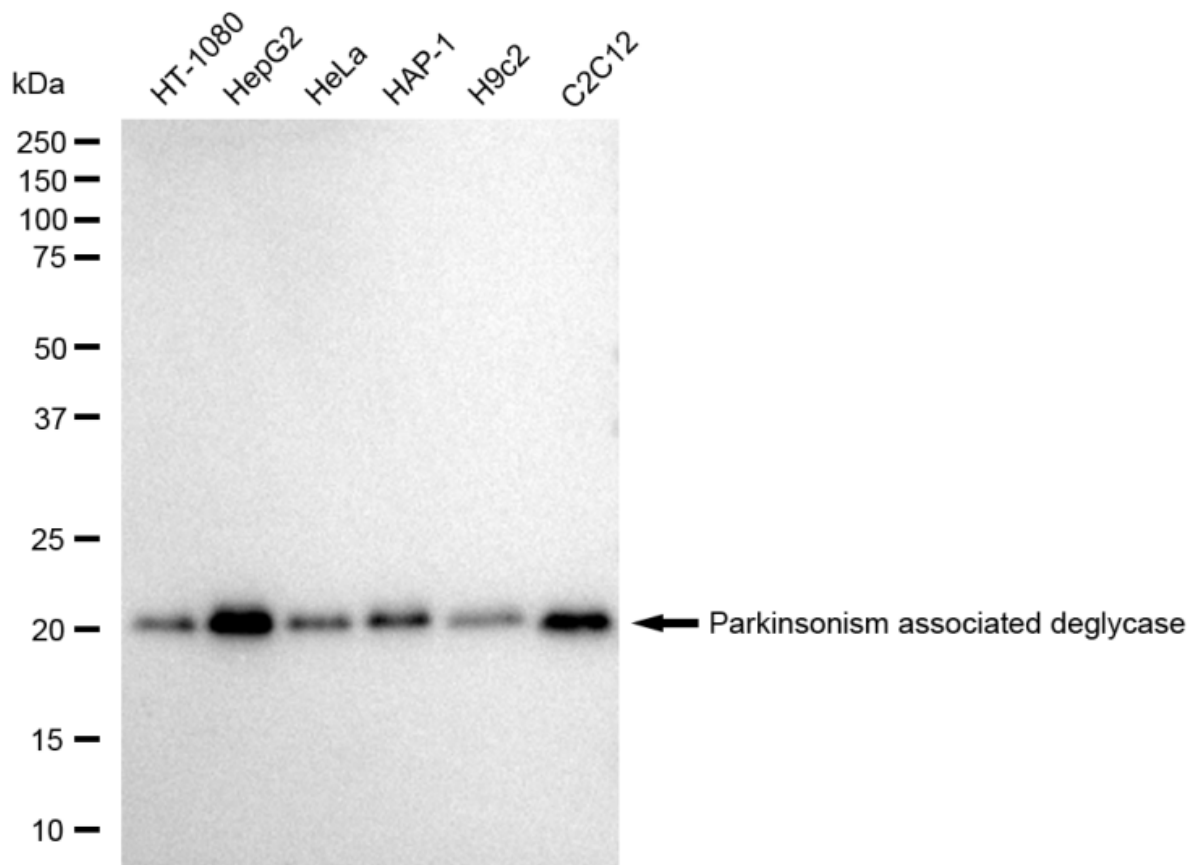
For general and specific antibody protocols please visit our website. Read all instructions before using this product.



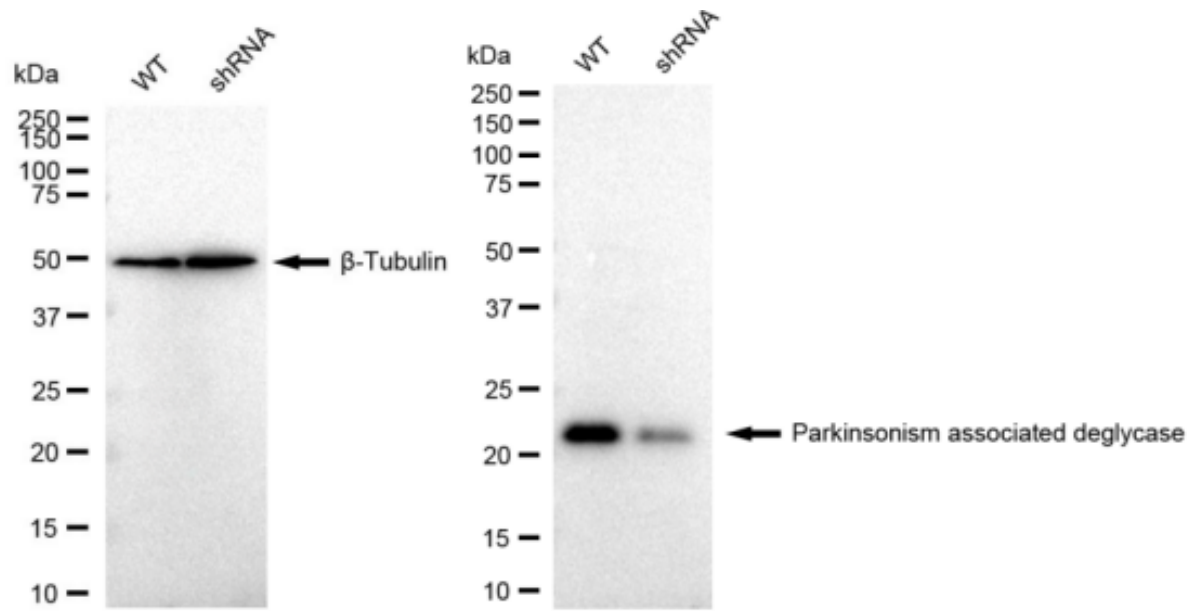
Flow cytometric analysis of Parkinsonism associated deglycase expression in HepG2 cells using Parkinsonism associated deglycase antibody 1:2,000. Green, isotype control; red, Parkinsonism associated deglycase.



Immunocytochemical staining of HepG2 cells with Parkinsonism associated deglycase antibody 1:1,000. Nuclei were stained blue with DAPI; Parkinsonism associated deglycase was stained magenta with Alexa Fluor® 647. Images were taken using Leica stellaris 5. Protein abundance based on laser Intensity and smart gain: Medium. Scale bar: 20 μ m.



Western blotting analysis using anti-Parkinsonism associated deglycase antibody 1:5,000 and HRP-conjugated goat anti-rabbit secondary antibody 1:20,000 respectively. Image was developed using FeQ™ ECL Substrate Kit .



Western blotting analysis using anti-Parkinsonism associated deglycase antibody 1:5,000 and HRP-conjugated goat anti-rabbit secondary antibody 1:20,000 respectively. Image was developed using FeQ™ ECL Substrate Kit .