



SunLong Biotech Co.,LTD  
Tel: 0086-571- 56623320 Fax:0086-571- 56623318  
E-mail:sales@sunlongbiotech.com  
www.sunlongbiotech.com

## [KD-Validated] Anti-PAK2 Rabbit Monoclonal Antibody

Cat No.: KD-10666

### Aliases:

PAK2; P21 (RAC1) Activated Kinase 2; PAK65; S6/H4 Kinase; P21 Protein (Cdc42/Rac)-Activated Kinase 2; Serine/Threonine-Protein Kinase PAK 2; P21 (CDKN1A)-Activated Kinase 2; P21-Activated Kinase 2; EC 2.7.11.1; Gamma-PAK; PAKgamma; PAK-2; P58; EC 2.7.11; PAKGAMMA; KNO2

### Background:

UniProt Entry: [Q13177](#);NCBI Gene Entry: [5062](#)

### Application Information

Molecular Weight: Predicted, 58 kDa, observed, 61 kDa Clonality: Rabbit monoclonal antibody Clone ID: 23GB2595 Species Reactivity: Human, Mouse, Rat Applications Tested: Western Blotting (WB), Flow Cytometry (FCM), Immunocytochemistry (IC)

### Immunogen

A synthesized peptide derived from human PAK2

### Isotype

Rabbit IgG

### Storage Buffer

Supplied in PBS (pH 7.4) containing 50% glycerol, and 0.02% sodium azide.

### Storage

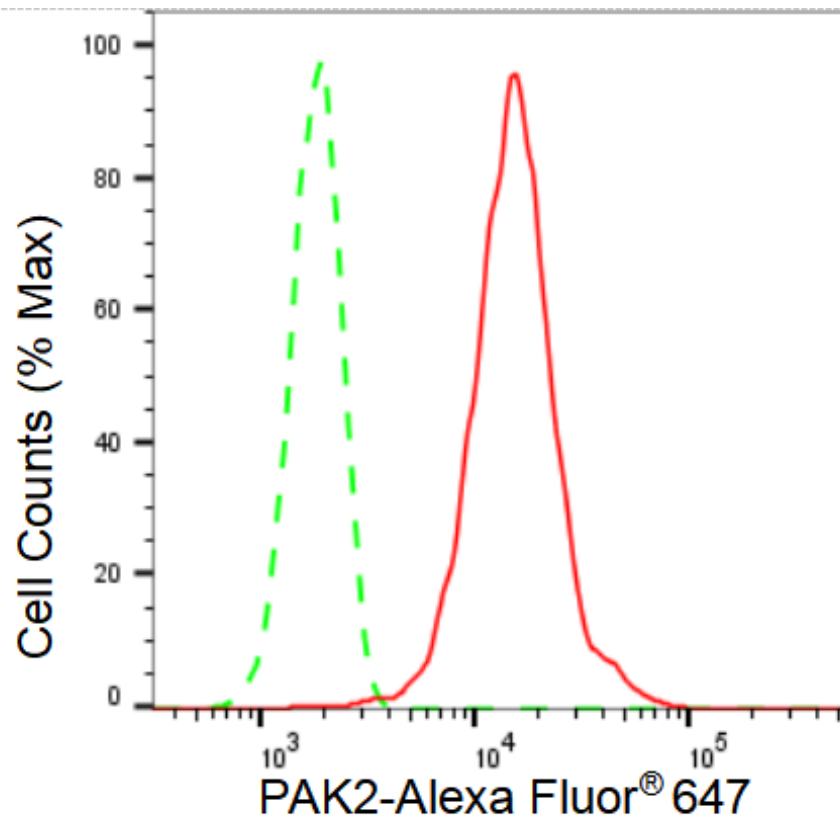
Store at -20 °C for one year.

### Recommended Dilutions

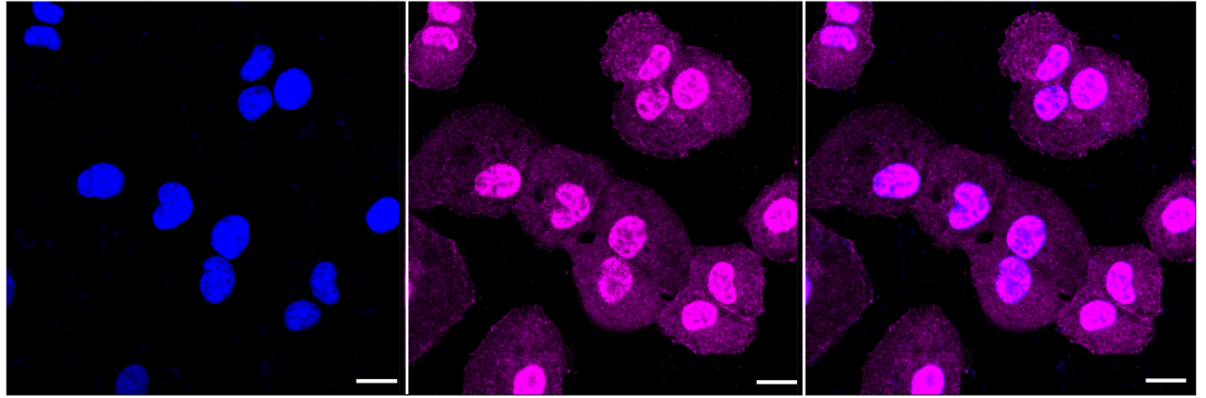
Western Blotting (WB): 1:1,000-1:5,000 Flow Cytometry (FCM): 1:2,000  
Immunocytochemistry (IC): 1:1,000

### Protocols

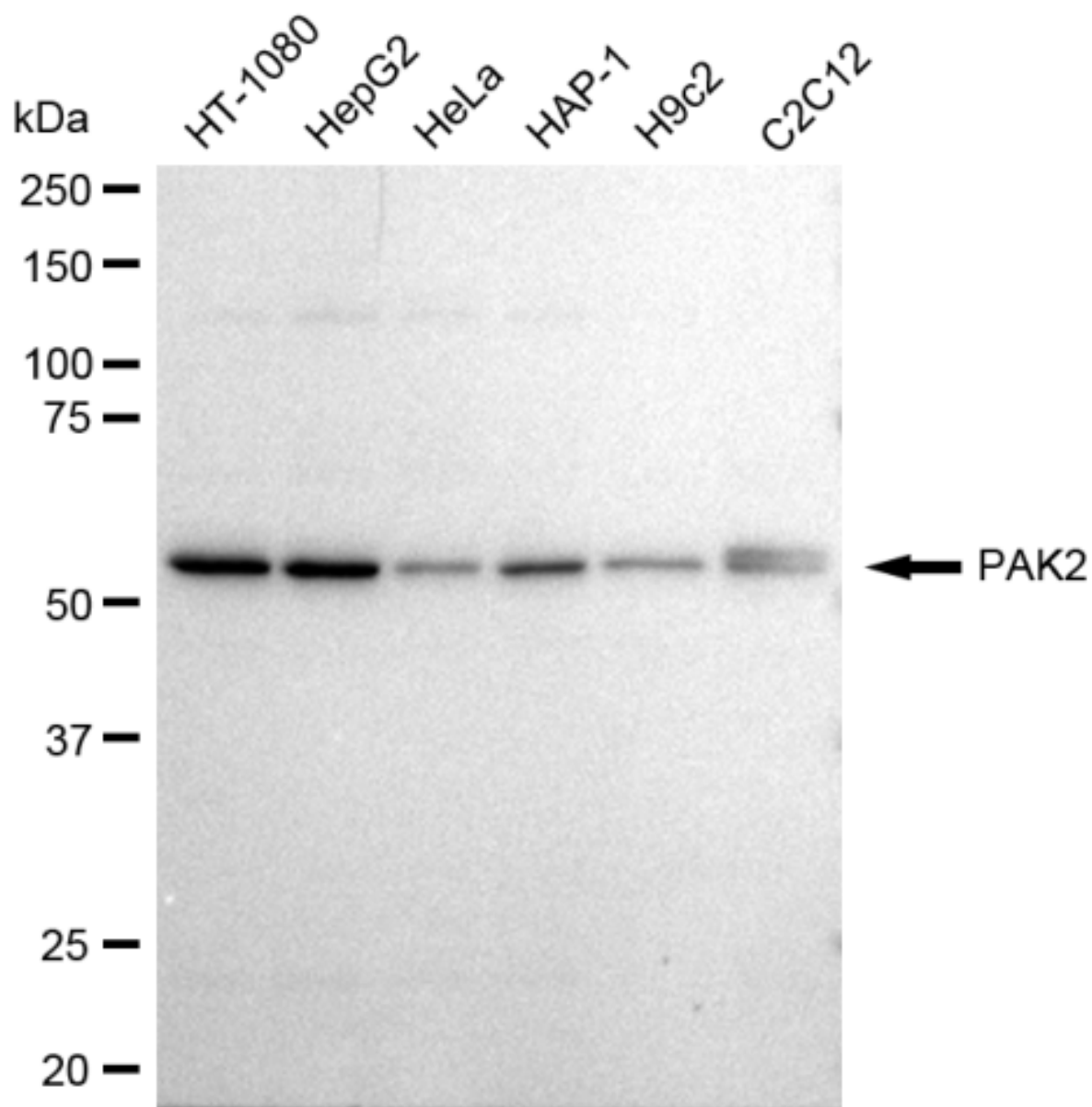
For general and specific antibody protocols please visit our website. Read all instructions before using this product.



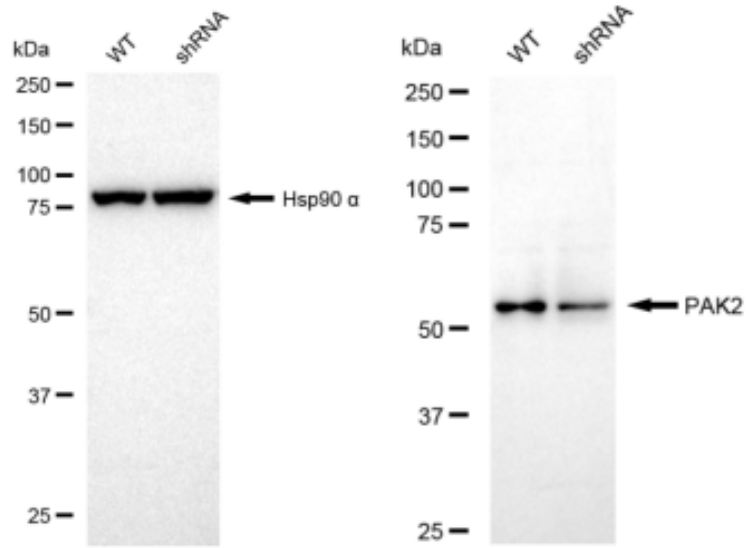
Flow cytometric analysis of PAK2 expression in HT-1080 cells using PAK2 antibody 1:2,000. Green, isotype control; red, PAK2.



Immunocytochemical staining of HT-1080 cells with PAK2 antibody 1:1,000. Nuclei were stained blue with DAPI; PAK2 was stained magenta with Alexa Fluor® 647. Images were taken using Leica stellaris 5. Protein abundance based on laser Intensity and smart gain: High. Scale bar: 20  $\mu\text{m}$ .



Western blotting analysis using anti-PAK2 antibody 1:5,000 and HRP-conjugated goat anti-rabbit secondary antibody 1:20,000 respectively. Image was developed using FeQ™ ECL Substrate Kit .



Western blotting analysis using anti-PAK2 antibody 1:5,000 and HRP-conjugated goat anti-rabbit secondary antibody 1:20,000 respectively. Image was developed using FeQ™ ECL Substrate Kit .