



SunLong Biotech Co.,LTD  
Tel: 0086-571- 56623320 Fax:0086-571- 56623318  
E-mail:sales@sunlongbiotech.com  
www.sunlongbiotech.com

## **[KD-Validated] Anti-PAFAH1B1 Rabbit Monoclonal Antibody**

Cat No.: KD-10665

### **Aliases:**

PAFAH1B1; Platelet Activating Factor Acetylhydrolase 1b Regulatory Subunit 1; LIS1; PAFAH; MDCR; MDS; Platelet-Activating Factor Acetylhydrolase 1b, Regulatory Subunit 1 (45kDa); Platelet-Activating Factor Acetylhydrolase IB Subunit Beta; NudF; Platelet-Activating Factor Acetylhydrolase, Isoform Ib, Alpha Subunit (45kD); Platelet-Activating Factor Acetylhydrolase, Isoform Ib, Alpha Subunit 45kDa; Platelet-Activating Factor Acetylhydrolase, Isoform Ib, Subunit 1 (45kDa); Miller-Dieker Syndrome Chromosome Region; PAF Acetylhydrolase 45 KDa Subunit; Lissencephaly 1 Protein; Lissencephaly-1 Protein; PAF-AH 45 KDa Subunit; Lissencephaly-1; PAF-AH Alpha; PAFAH Alpha; PAFAHA; LIS-1; LIS2; NUDF

### **Background:**

UniProt Entry: [P43034](#);NCBI Gene Entry: [5048](#)

### **Application Information**

Molecular Weight: Predicted, 47 kDa, observed, 47 kDa Clonality: Rabbit monoclonal antibody Clone ID: 23GB2825 Species Reactivity: Human, Mouse, Rat Applications Tested: Western Blotting (WB), Flow Cytometry (FCM), Immunocytochemistry (IC)

### **Immunogen**

A synthesized peptide derived from human LIS1

### **Isotype**

Rabbit IgG

**Storage Buffer**

Supplied in PBS (pH 7.4) containing 50% glycerol, and 0.02% sodium azide.

**Storage**

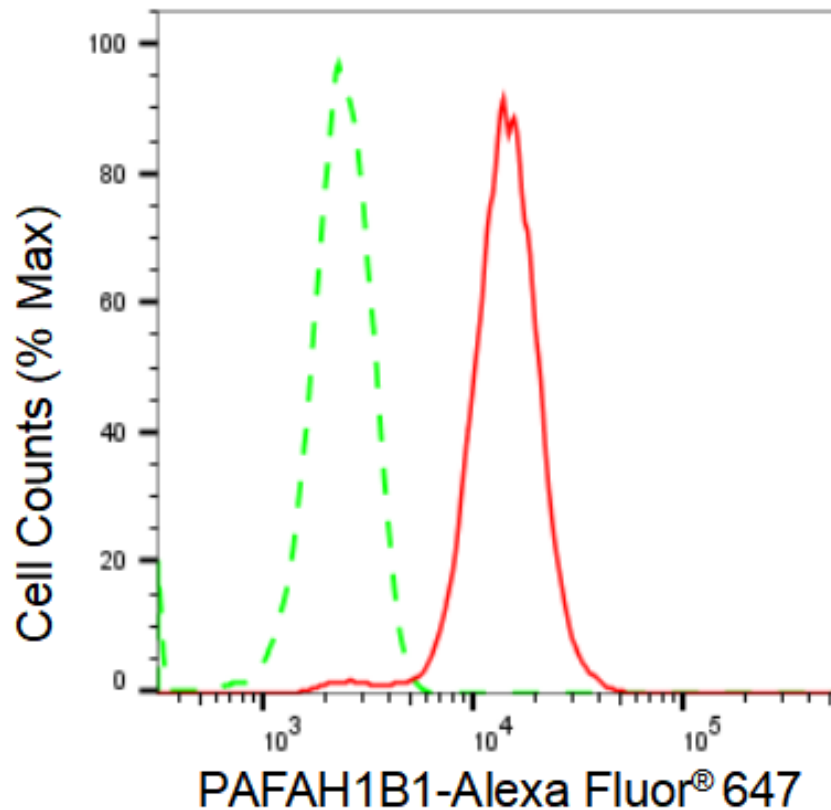
Store at -20 °C for one year.

**Recommended Dilutions**

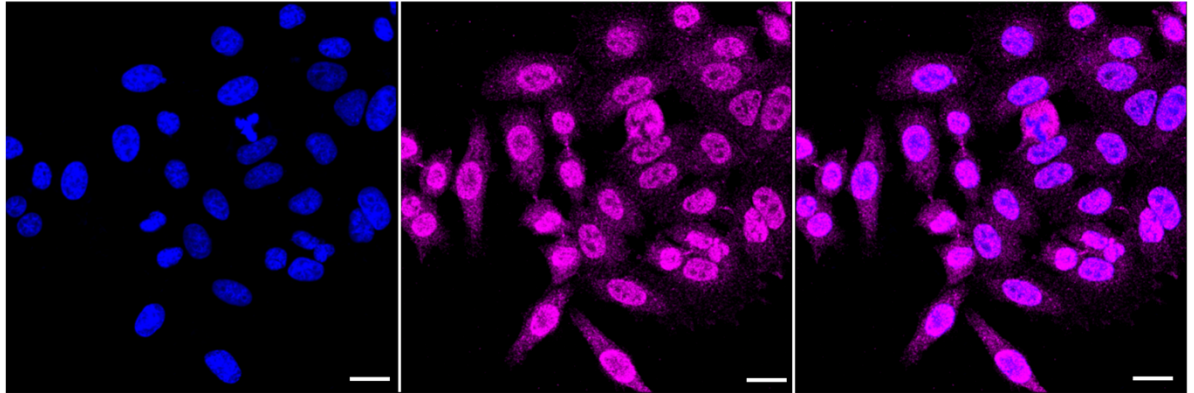
Western Blotting (WB): 1:1,000-1:5,000 Flow Cytometry (FCM): 1:2,000  
Immunocytochemistry (IC): 1:1,000

**Protocols**

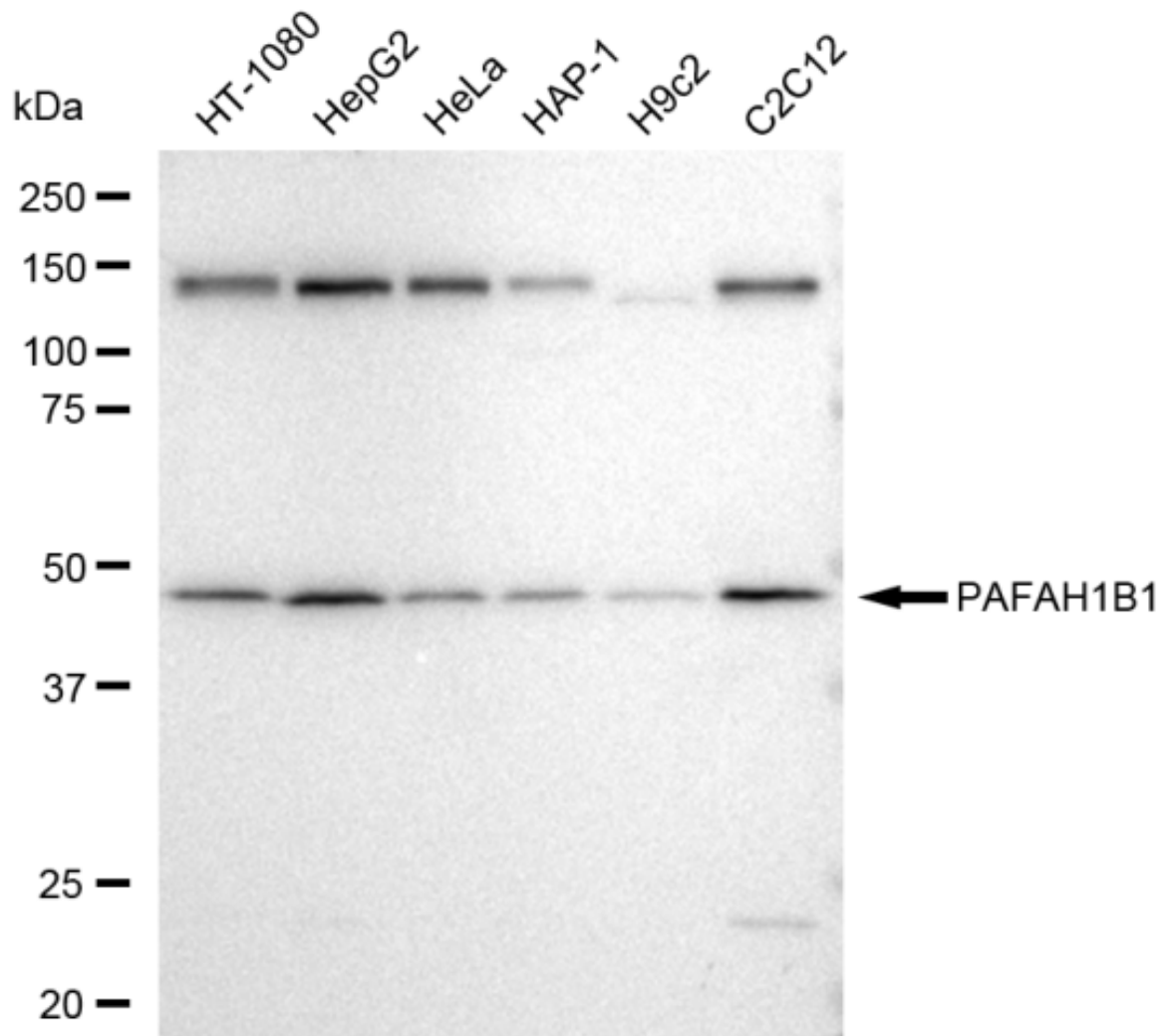
For general and specific antibody protocols please visit our website. Read all instructions before using this product.



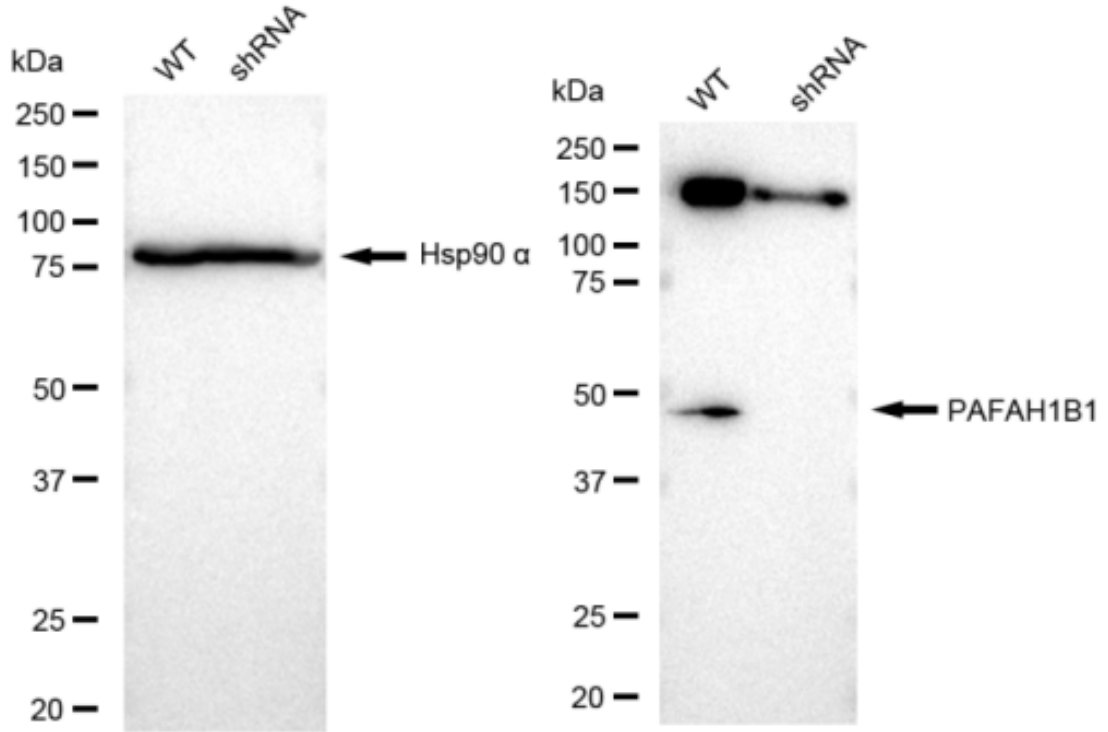
Flow cytometric analysis of PAFAH1B1 expression in HepG2 cells using PAFAH1B1 antibody 1:2,000. Green, isotype control; red, PAFAH1B1.



Immunocytochemical staining of HepG2 cells with PAFAH1B1 antibody 1:1,000. Nuclei were stained blue with DAPI; PAFAH1B1 was stained magenta with Alexa Fluor® 647. Images were taken using Leica stellaris 5. Protein abundance based on laser Intensity and smart gain: High. Scale bar: 20  $\mu$ m.



Western blotting analysis using anti-PAFAH1B1 antibody 1:5,000 and HRP-conjugated goat anti-rabbit secondary antibody 1:20,000 respectively. Image was developed using FeQ™ ECL Substrate Kit . PAFAH1B1, platelet activating factor acetylhydrolase 1b regulatory subunit 1.



Western blotting analysis using anti-PAFAH1B1 antibody 1:5,000 and HRP-conjugated goat anti-rabbit secondary antibody 1:20,000 respectively. Image was developed using FeQ™ ECL Substrate Kit .