



SunLong Biotech Co.,LTD  
Tel: 0086-571- 56623320 Fax:0086-571- 56623318  
E-mail:sales@sunlongbiotech.com  
www.sunlongbiotech.com

## **[KD-Validated] Anti-Poly(A) Binding Protein Nuclear 1 Rabbit Monoclonal Antibody**

Cat No.: KD-10664

### **Aliases:**

Poly(A) Binding Protein Nuclear 1; PAB2 ; PABP2; Polyadenylate-Binding Protein 2; PABP-2; PABII; OPMD; Polyadenylate-Binding Nuclear Protein 1; Poly(A)-Binding Protein, Nuclear 1; Poly(A) Binding Protein, Nuclear 1; Nuclear Poly(A)-Binding Protein 1; Poly(A) Binding Protein II; Poly(A)-Binding Protein II; Poly(A) Binding Protein 2; Poly(A)-Binding Protein 2

### **Background:**

UniProt Entry: [Q86U42](#);NCBI Gene Entry: [8106](#)

### **Application Information**

Molecular Weight: Predicted, 33 kDa, observed, 49 kDa Clonality: Rabbit monoclonal antibody Clone ID: 24GB365 Species Reactivity: Human, Mouse, Rat Applications Tested: Western Blotting (WB), Flow Cytometry (FCM), Immunocytochemistry (IC)

### **Immunogen**

A synthesized peptide derived from human PABPN1

### **Isotype**

Rabbit IgG

### **Storage Buffer**

Supplied in PBS (pH 7.4) containing 50% glycerol, and 0.02% sodium azide.

#### Storage

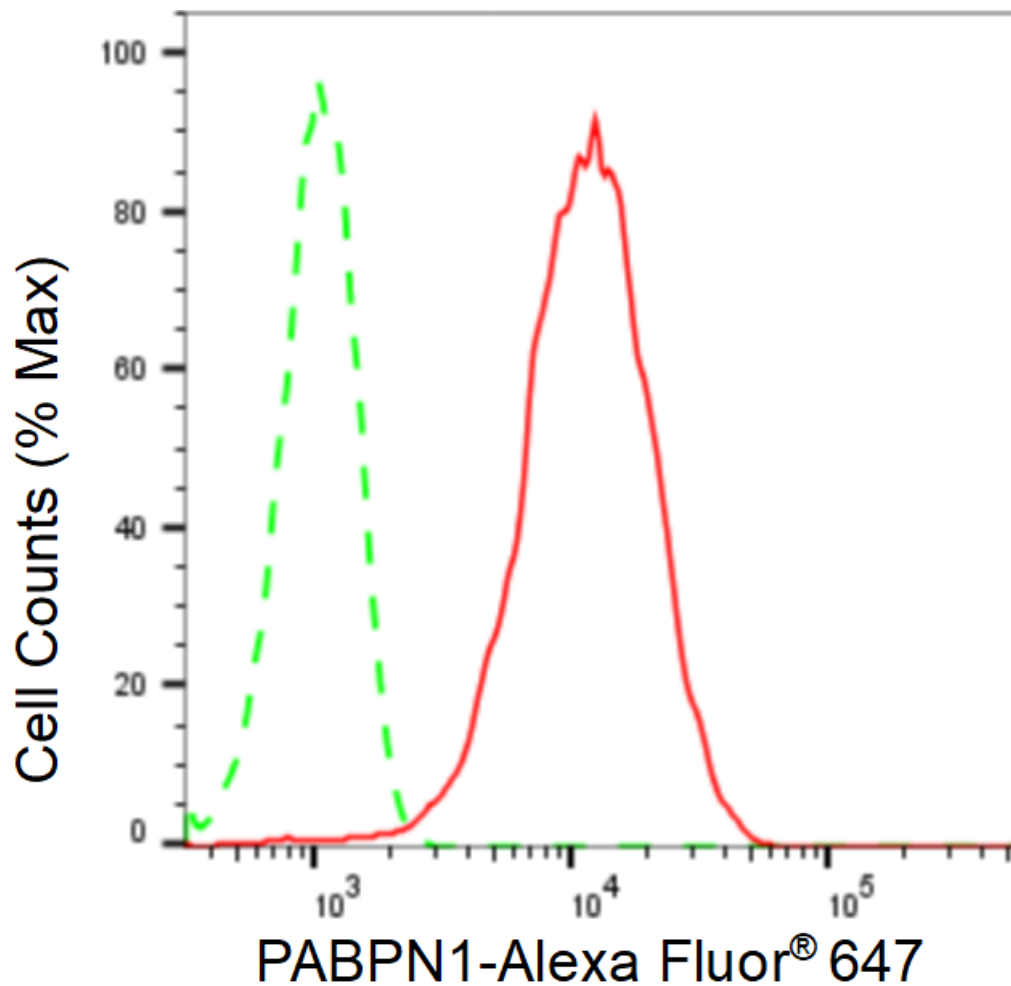
Store at -20 °C for one year.

#### Recommended Dilutions

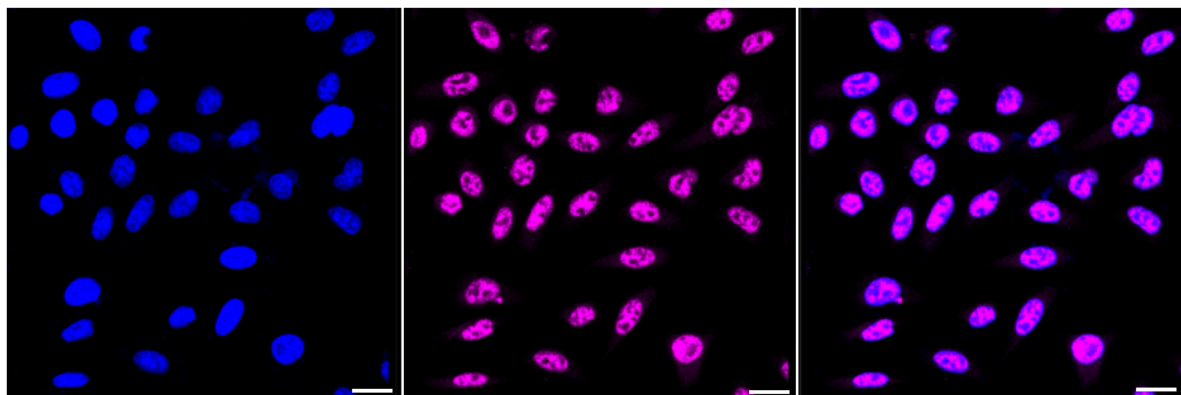
Western Blotting (WB): 1:1,000-1:5,000 Flow Cytometry (FCM): 1:2,000  
Immunocytochemistry (IC): 1:1,000

#### Protocols

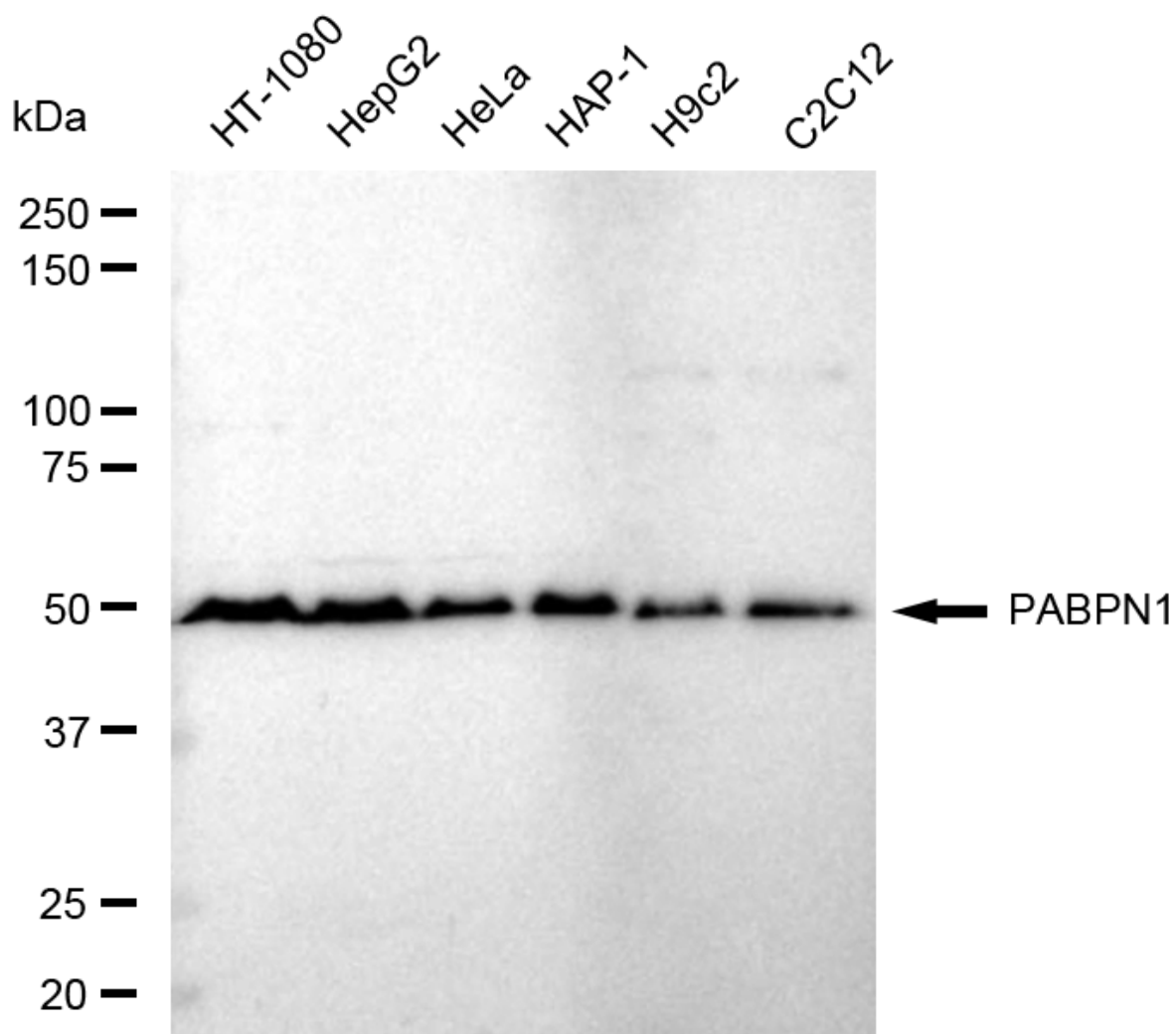
For general and specific antibody protocols please visit our website. Read all instructions before using this product.



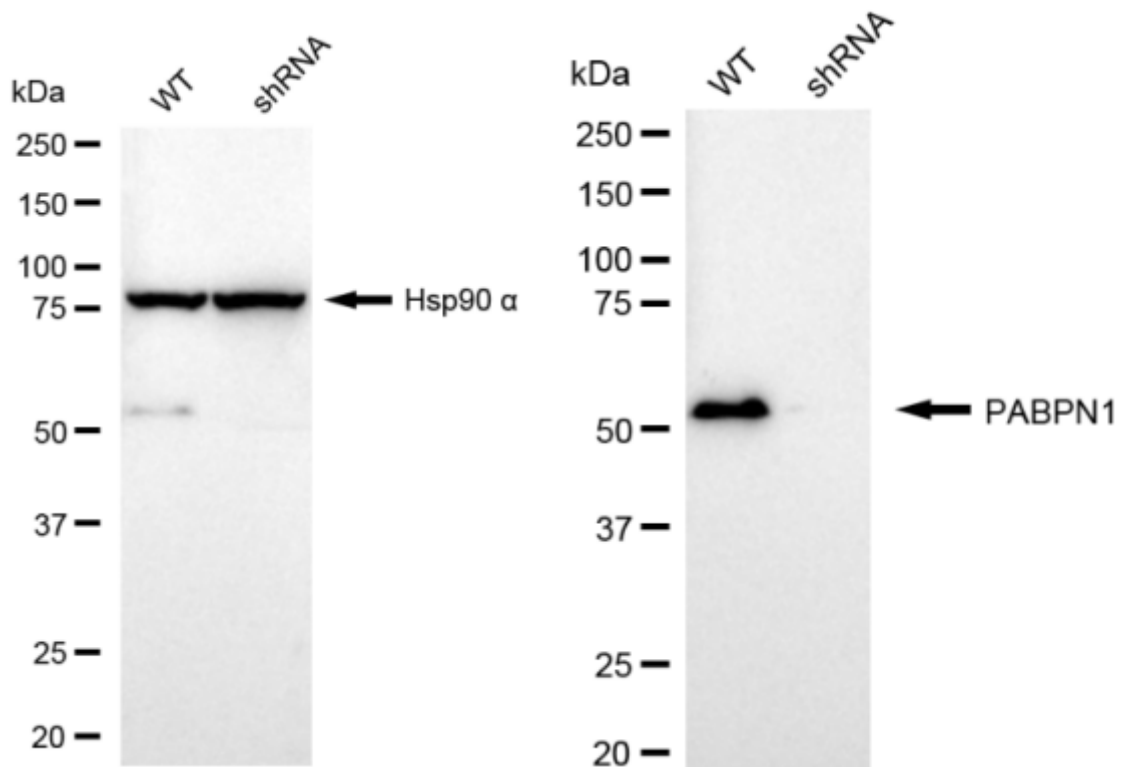
Flow cytometric analysis of PABPN1 expression in HepG2 cells using PABPN1 antibody 1:2,000. Green, isotype control; red, PABPN1.



Immunocytochemical staining of HeLa cells with anti-PABPN1 antibody 1:1,000. Nuclei were stained blue with DAPI; PABPN1 was stained magenta with Alexa Fluor® 647. Images were taken using Leica stellaris 5. Protein abundance based on laser Intensity and smart gain: High. Scale bar: 20  $\mu$ m.



Western blotting analysis using anti-PABPN1 antibody 1:5,000 and HRP-conjugated goat anti-rabbit secondary antibody 1:20,000 respectively. Image was developed using FeQ™ ECL Substrate Kit .



Western blotting analysis using anti-PABPN1 antibody 1:5,000 and HRP-conjugated goat anti-rabbit secondary antibody 1:20,000 respectively. Image was developed using NaQ™ ECL Substrate Kit .