



SunLong Biotech Co.,LTD  
Tel: 0086-571- 56623320 Fax:0086-571- 56623318  
E-mail:sales@sunlongbiotech.com  
www.sunlongbiotech.com

## **[KD-Validated] Anti-Proliferation-Associated 2G4 Rabbit Monoclonal Antibody**

Cat No.: KD-10663

### **Aliases:**

Proliferation-Associated 2G4; EBP1; IRES-Specific Cellular Transacting Factor 45; Proliferation-Associated Protein 2G4; Proliferation-Associated 2G4, 38kDa; Proliferation-Associated 2G4, 38kD; Cell Cycle Protein P38-2G4 Homolog; ErbB-3 Receptor Binding Protein; ErbB3-Binding Protein 1; ITAF45; HG4-1; ErbB3-Binding Protein Ebp1; ErbB-3 Binding Protein 1; P38-2G4

### **Background:**

UniProt Entry: [Q9UQ80](#);NCBI Gene Entry: [5036](#)

### **Application Information**

Molecular Weight: Predicted, 44 kDa, observed, 42 kDa Clonality: Rabbit monoclonal antibody Clone ID: 24GB580 Species Reactivity: Human, Mouse, Rat Applications Tested: Western Blotting (WB), Flow Cytometry (FCM), Immunocytochemistry (IC)

### **Immunogen**

A synthesized peptide derived from human EBP1 / PA2G4

### **Isotype**

Rabbit IgG

### **Storage Buffer**

Supplied in PBS (pH 7.4) containing 50% glycerol, and 0.02% sodium azide.

#### Storage

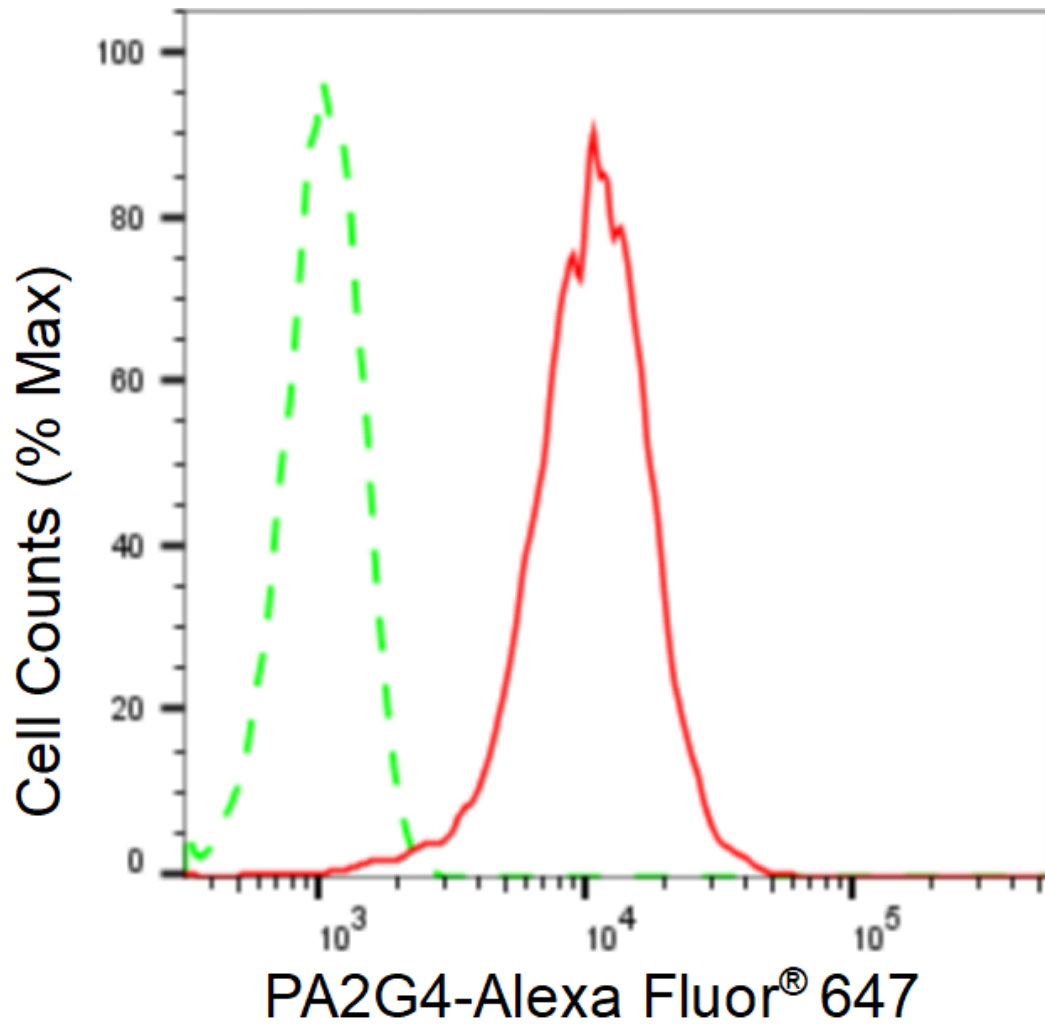
Store at -20 °C for one year.

#### Recommended Dilutions

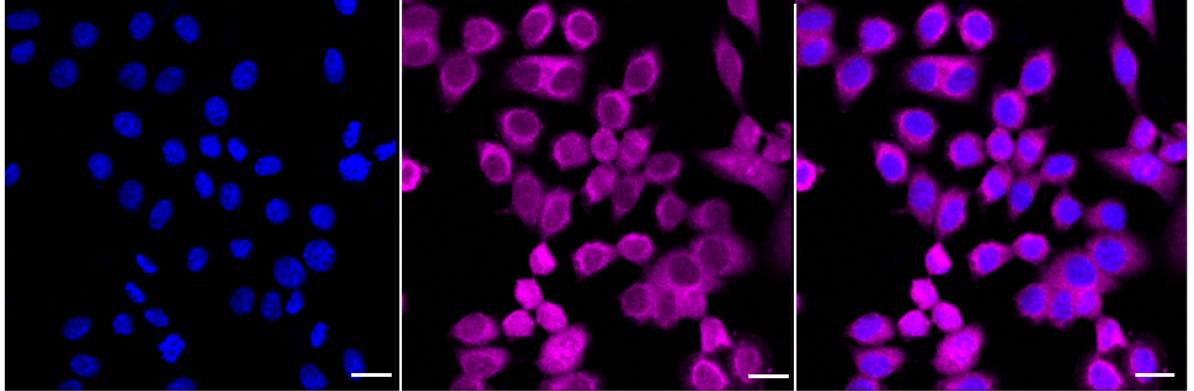
Western Blotting (WB): 1:1,000-1:5,000 Flow Cytometry (FCM): 1:2,000  
Immunocytochemistry (IC): 1:1,000

#### Protocols

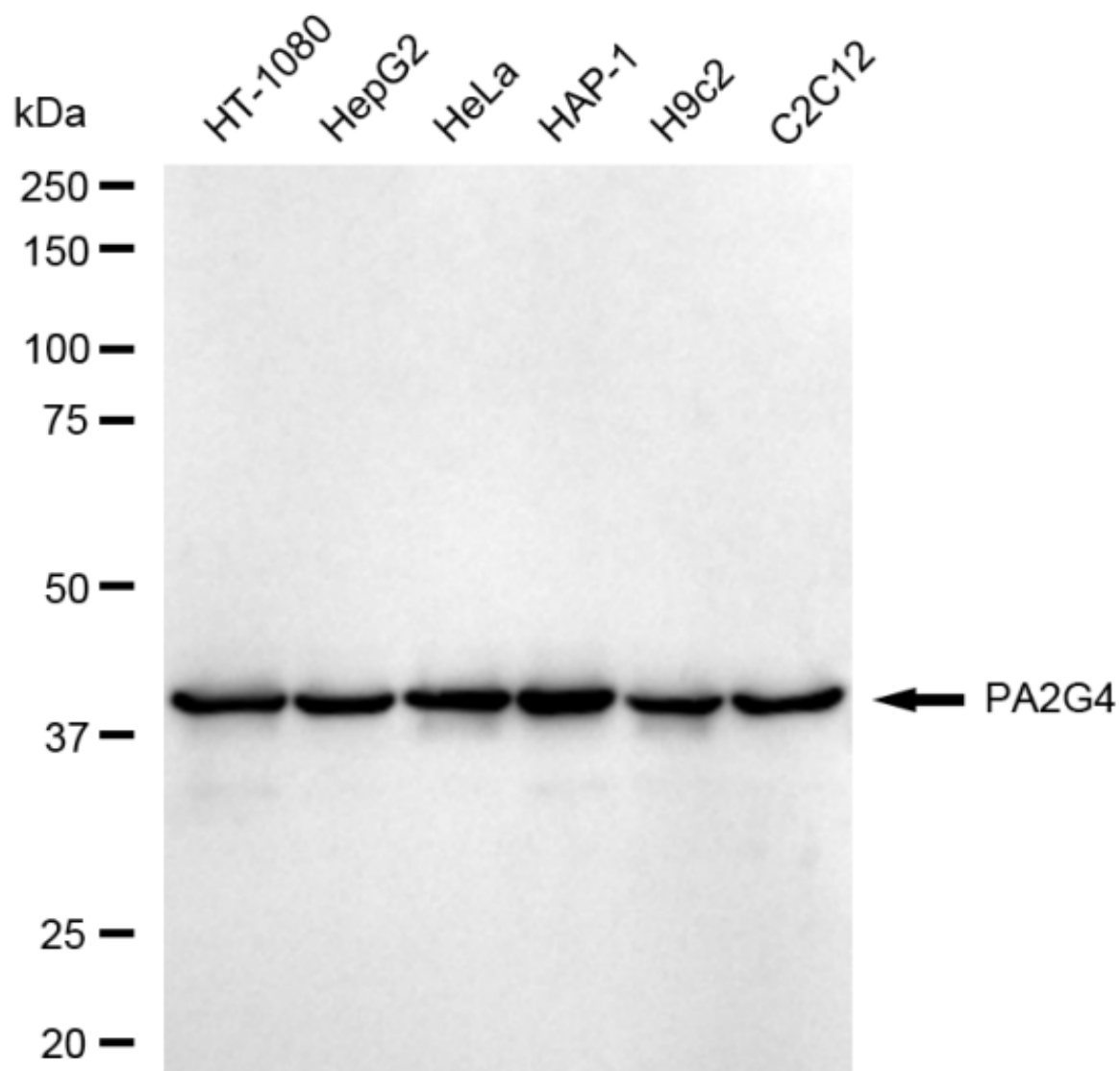
For general and specific antibody protocols please visit our website. Read all instructions before using this product.



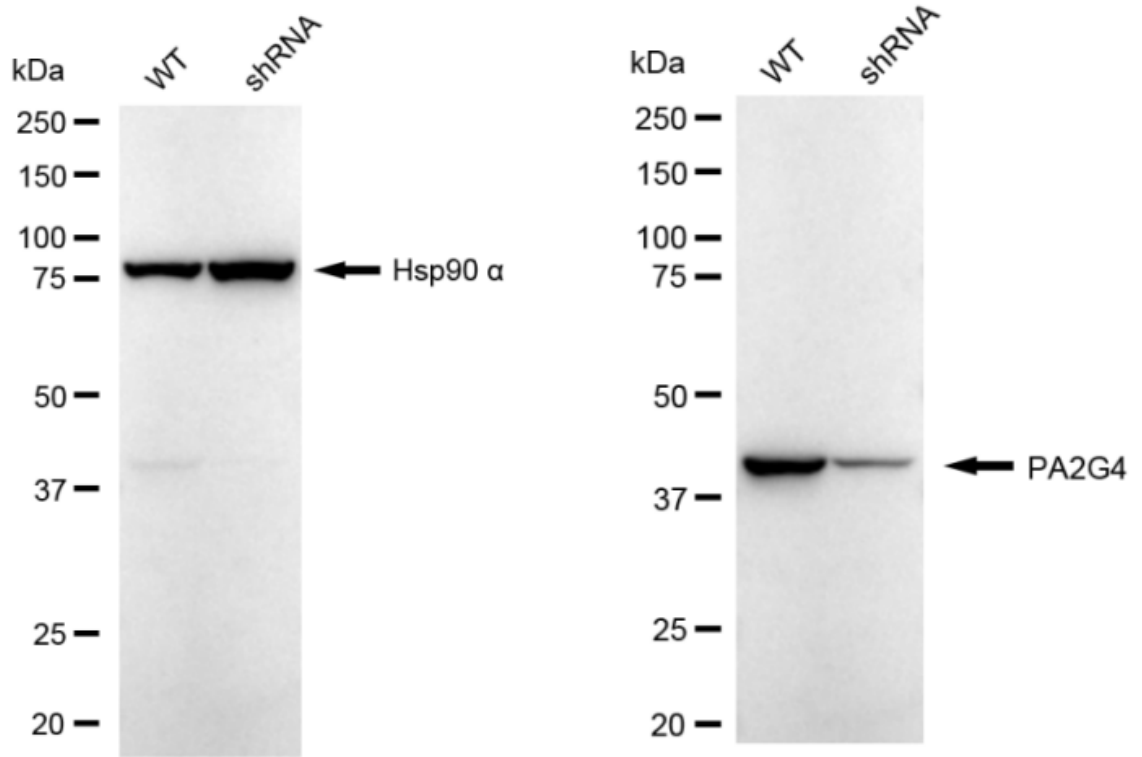
Flow cytometric analysis of PA2G4 expression in HepG2 cells using PA2G4 antibody 1:2,000. Green, isotype control; red, PA2G4.



Immunocytochemical staining of HepG2 cells with anti-PA2G4 antibody 1:1,000. Nuclei were stained blue with DAPI; PA2G4 was stained magenta with Alexa Fluor® 647. Images were taken using Leica stellaris 5. Protein abundance based on laser Intensity and smart gain: Medium. Scale bar: 20  $\mu$ m.



Western blotting analysis using anti-PA2G4 antibody 1:5,000 and HRP-conjugated goat anti-rabbit secondary antibody 1:20,000 respectively. Image was developed using FeQ™ ECL Substrate Kit .



Western blotting analysis using anti-PA2G4 antibody 1:5,000 and HRP-conjugated goat anti-rabbit secondary antibody 1:20,000 respectively. Image was developed using NaQ™ ECL Substrate Kit .