



SunLong Biotech Co.,LTD
Tel: 0086-571- 56623320 Fax:0086-571- 56623318
E-mail:sales@sunlongbiotech.com
www.sunlongbiotech.com

[KD-Validated] Anti-Prolyl 4-hydroxylase subunit beta Rabbit Monoclonal Antibody

Cat No.: KD-10662

Aliases:

Prolyl 4-Hydroxylase Subunit Beta; PDIA1; PDI; ERBA2L; PROHB; PO4HB; PO4DB; DSI; GIT; Procollagen-Proline, 2-Oxoglutarate 4-Dioxygenase (Proline 4-Hydroxylase), Beta Polypeptide; Protein Disulfide Isomerase Family A, Member; Protein Disulfide Isomerase-Associated; Cellular Thyroid Hormone-Binding Protein; Prolyl 4-Hydroxylase, Beta Polypeptide; Collagen Prolyl 4-Hydroxylase Beta; Protein Disulfide-Isomerase; EC 5.3.4.1; P4Hbeta; P55; Procollagen-Proline, 2-Oxoglutarate 4-Dioxygenase (Proline 4-Hydroxylase), Beta Polypeptide (Protein Disulfide Isomerase; Thyroid Hormone Binding Protein P55); Procollagen-Proline, 2-Oxoglutarate 4-Dioxygenase (Proline 4-Hydroxylase), Beta Polypeptide (Protein Disulfide Isomerase-Associated 1) Protein Disulfide Isomerase/Oxidoreductase; Glutathione-Insulin Transhydrogenase; Thyroid Hormone-Binding Protein P55; Testicular Secretory Protein Li 32; Procollagen Hydroxylase; P4HBETA; CLCRP1; PHDB;

Background:

UniProt Entry: [P07237](#);NCBI Gene Entry: [5034](#)

Application Information

Molecular Weight: Predicted, 57 kDa, observed, 57 kDa Clonality: Rabbit monoclonal antibody Clone ID: 23GB2890 Species Reactivity: Human, Mouse, Rat Applications Tested: Western Blotting (WB), Flow Cytometry (FCM)

Immunogen

A synthesized peptide derived from human P4HB

Isotype

Rabbit IgG

Storage Buffer

Supplied in PBS (pH 7.4) containing 50% glycerol, and 0.02% sodium azide.

Storage

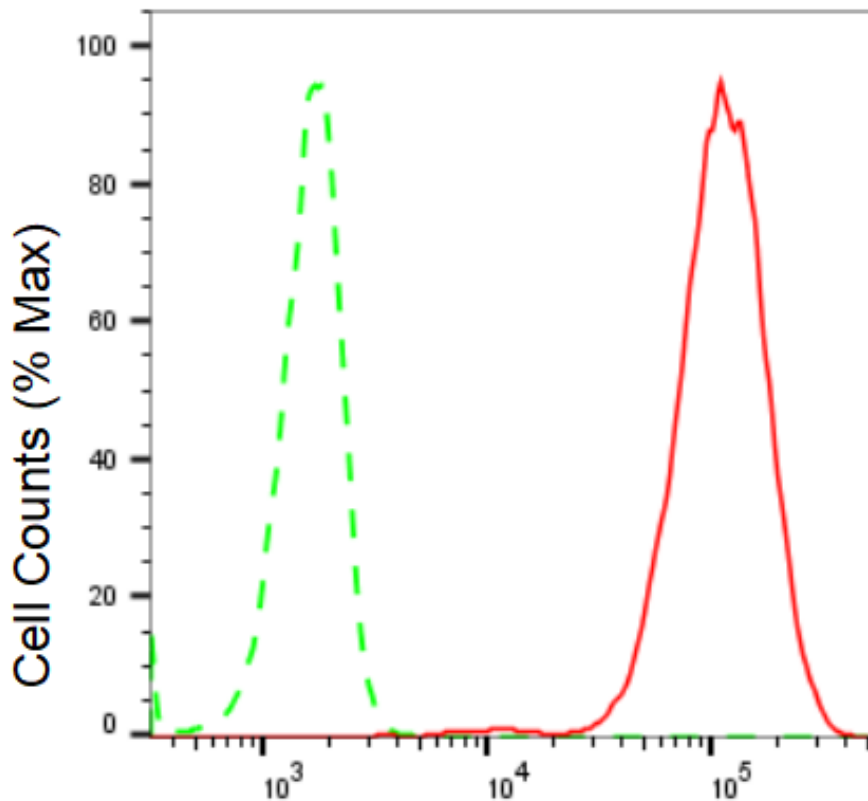
Store at -20 °C for one year.

Recommended Dilutions

Western Blotting (WB): 1:1,000-1:5,000 Flow Cytometry (FCM): 1:2,000

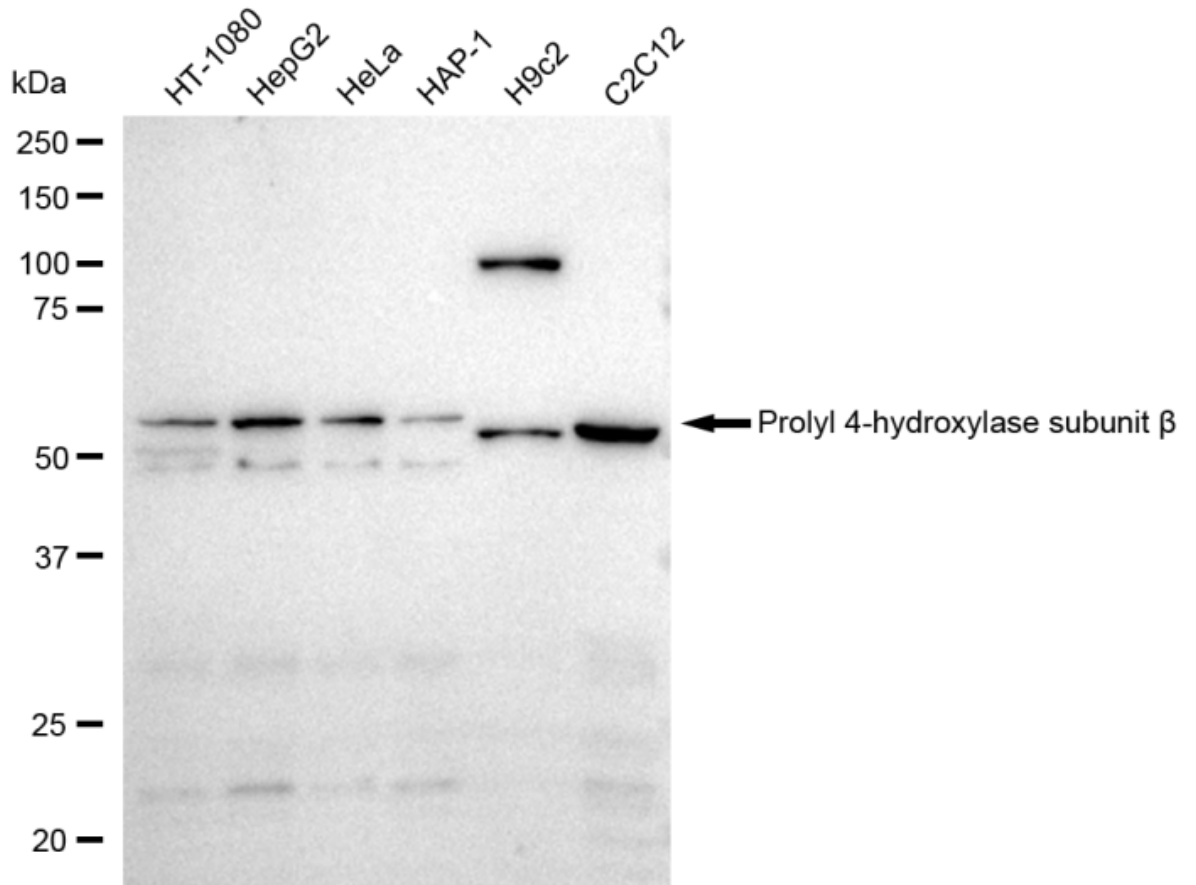
Protocols

For general and specific antibody protocols please visit our website. Read all instructions before using this product.

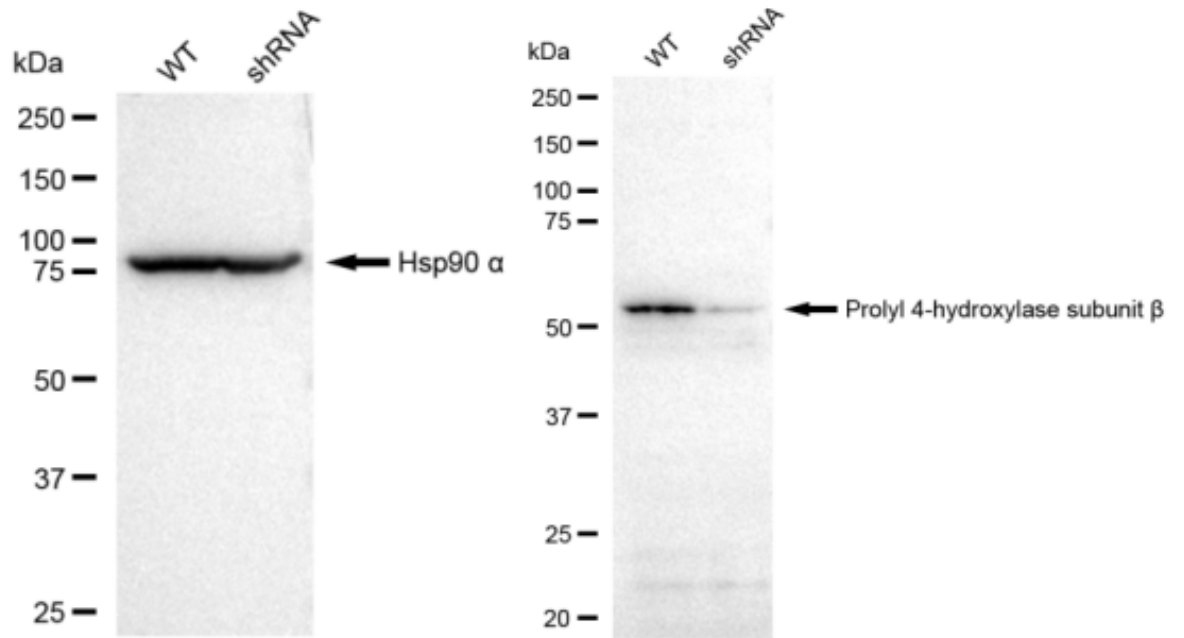


Prolyl 4-hydroxylase subunit beta-Alexa Fluor[®] 647

Flow cytometric analysis of Prolyl 4-hydroxylase subunit beta expression in C2C12 cells using Prolyl 4-hydroxylase subunit beta antibody 1:2,000. Green, isotype control; red, Prolyl 4-hydroxylase subunit beta.



Western blotting analysis using anti-Prolyl 4-hydroxylase subunit beta antibody 1:5,000 and HRP-conjugated goat anti-rabbit secondary antibody 1:20,000 respectively. Image was developed using FeQ™ ECL Substrate Kit .



Western blotting analysis using anti-Prolyl 4-hydroxylase subunit beta antibody 1:5,000 and HRP-conjugated goat anti-rabbit secondary antibody 1:20,000 respectively. Image was developed using FeQ™ ECL Substrate Kit .