



SunLong Biotech Co.,LTD
Tel: 0086-571- 56623320 Fax:0086-571- 56623318
E-mail:sales@sunlongbiotech.com
www.sunlongbiotech.com

[KD-Validated] Anti-Olfactomedin 4 Rabbit Monoclonal Antibody

Cat No.: KD-10658

Aliases:

Olfactomedin 4; GW112; OlfD; GC1; G-CSF-Stimulated Clone 1 Protein; Antiapoptotic Protein GW112; Olfactomedin-4; HGC-1; HOLfD; OLM4; BA209J19.1; UNQ362

Background:

UniProt Entry: [Q6UX06](#);NCBI Gene Entry: [10562](#)

Application Information

Molecular Weight: Predicted, 57 kDa, observed, 54 kDa Clonality: Rabbit monoclonal antibody Clone ID: 24GB680 Species Reactivity: Human, Mouse, Rat Applications Tested: Western Blotting (WB), Flow Cytometry (FCM), Immunocytochemistry (IC)

Immunogen

A synthesized peptide derived from human OLFM4

Isotype

Rabbit IgG

Storage Buffer

Supplied in PBS (pH 7.4) containing 50% glycerol, and 0.02% sodium azide.

Storage

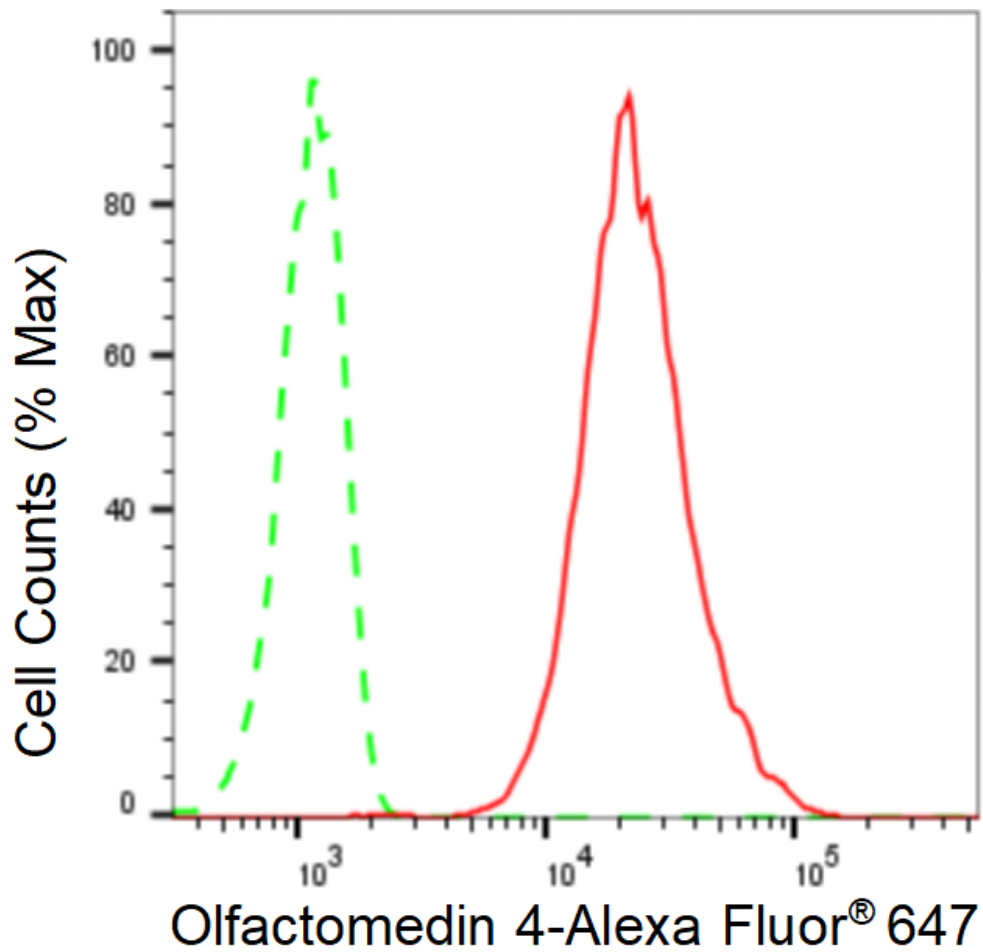
Store at -20 °C for one year.

Recommended Dilutions

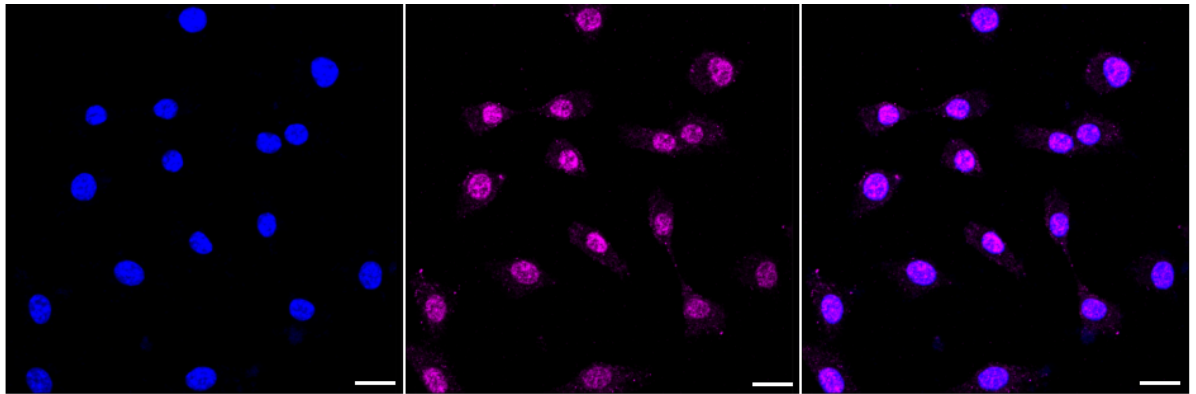
Western Blotting (WB): 1:1,000-1:5,000 Flow Cytometry (FCM): 1:2,000
Immunocytochemistry (IC): 1:1,000

Protocols

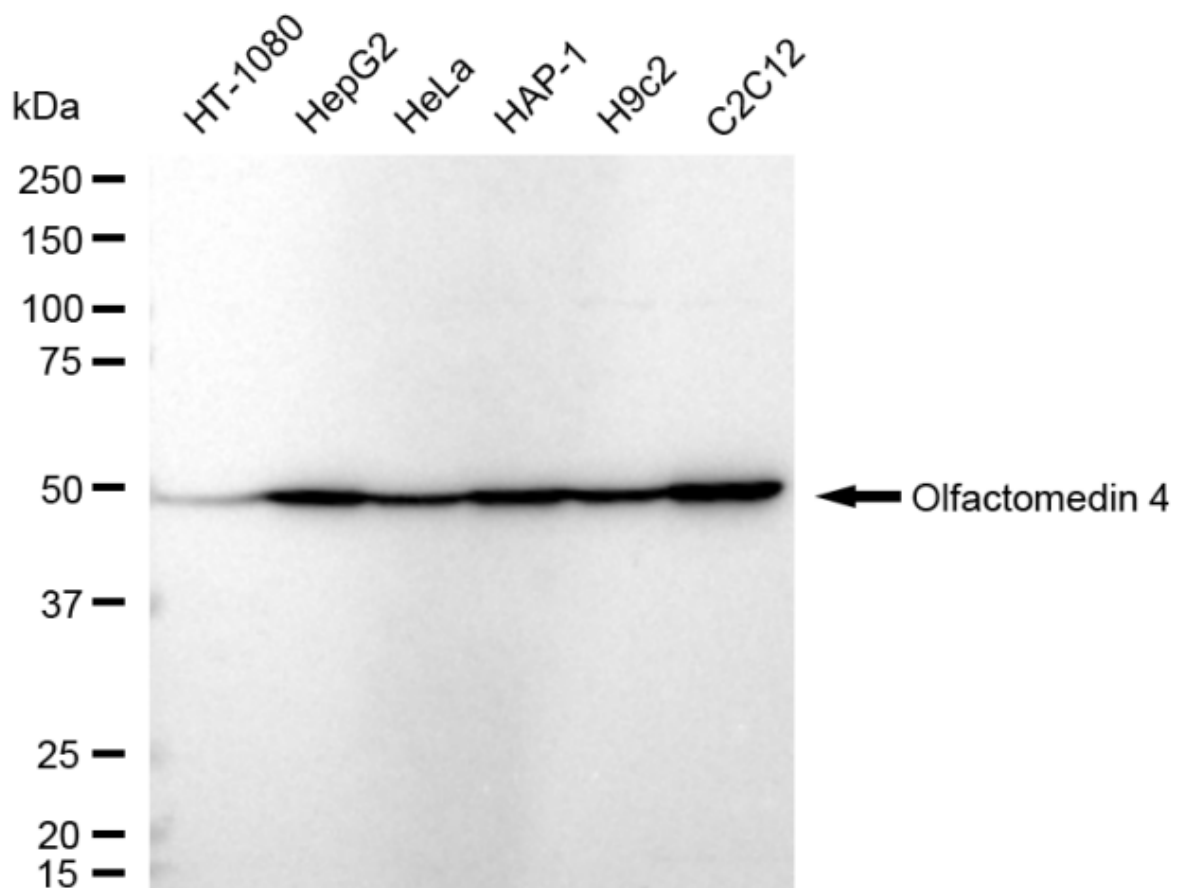
For general and specific antibody protocols please visit our website. Read all instructions before using this product.



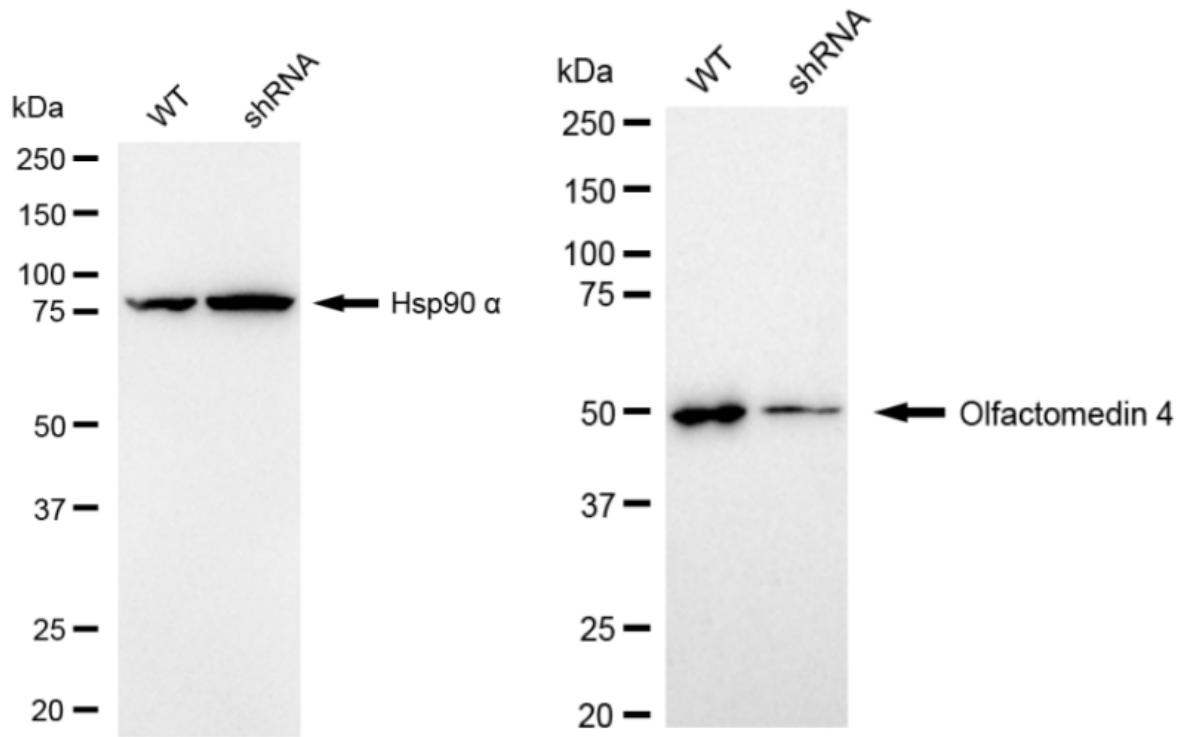
Flow cytometric analysis of Olfactomedin 4 expression in C2C12 cells using Olfactomedin 4 antibody 1:2,000. Green, isotype control; red, Olfactomedin 4.



Immunocytochemical staining of C2C12 cells with anti-Olfactomedin 4 antibody 1:1,000 . Nuclei were stained blue with DAPI; Olfactomedin 4 was stained magenta with Alexa Fluor® 647. Images were taken using Leica stellaris 5. Protein abundance based on laser Intensity and smart gain: High. Scale bar: 20 μ m.



Western blotting analysis using anti-Olfactomedin 4 antibody 1:5,000 and HRP-conjugated goat anti-rabbit secondary antibody 1:20,000 respectively. Image was developed using FeQ™ ECL Substrate Kit .



Western blotting analysis using anti-Olfactomedin 4 antibody 1:5,000 and HRP-conjugated goat anti-rabbit secondary antibody 1:20,000 respectively. Image was developed using NaQ™ ECL Substrate Kit .