



SunLong Biotech Co.,LTD  
Tel: 0086-571- 56623320 Fax:0086-571- 56623318  
E-mail:sales@sunlongbiotech.com  
www.sunlongbiotech.com

## **[KD-Validated] Anti-Nucleoporin 155 Rabbit Monoclonal Antibody**

Cat No.: KD-10656

### **Aliases:**

NUP155; Nucleoporin 155; KIAA0791; N155; Nuclear Pore Complex Protein Nup155;  
155 KDa Nucleoporin; Nucleoporin 155kDa; Nucleoporin Nup155; Nucleoporin 155kD;  
ATFB15

### **Background:**

UniProt Entry: [O75694](#);NCBI Gene Entry: [9631](#)

### **Application Information**

Molecular Weight: Predicted, 155 kDa, observed, 155 kDa Clonality: Rabbit monoclonal  
antibody Clone ID: 23GB2010 Species Reactivity: Human, Mouse, Rat Applications  
Tested: Western Blotting (WB), Flow Cytometry (FCM), Immunocytochemistry (IC)

### **Immunogen**

A synthesized peptide derived from human NUP155

### **Isotype**

Rabbit IgG

### **Storage Buffer**

Supplied in PBS (pH 7.4) containing 50% glycerol, and 0.02% sodium azide.

### Storage

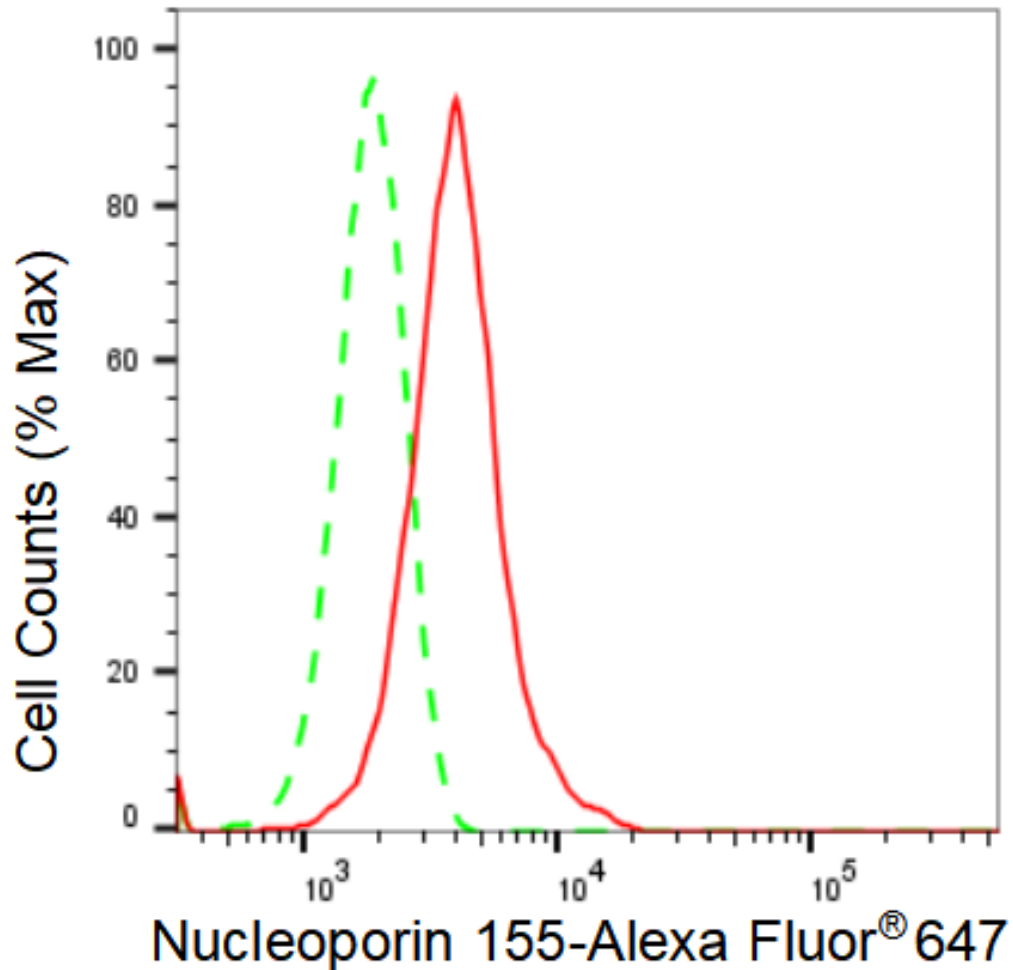
Store at -20 °C for one year.

### Recommended Dilutions

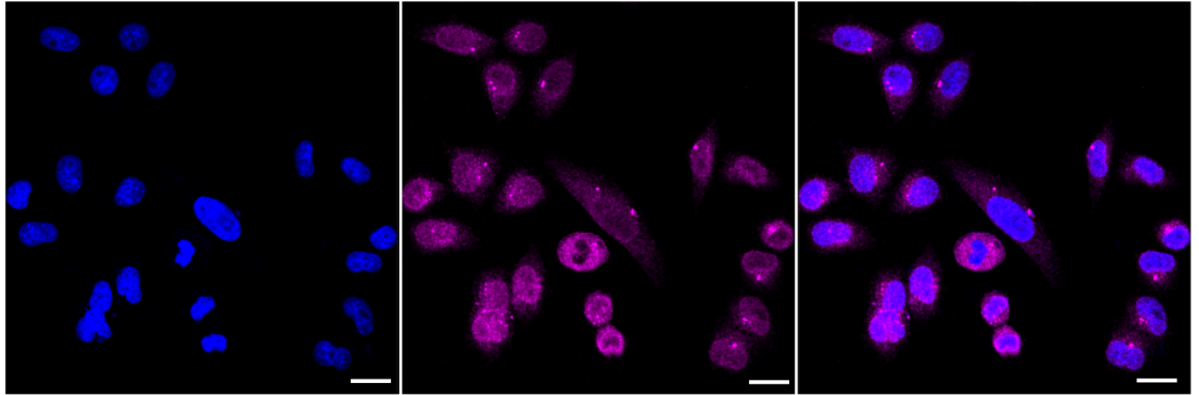
Western Blotting (WB): 1:1,000-1:5,000 Flow Cytometry (FCM): 1:2,000  
Immunocytochemistry (IC): 1:1,000

### Protocols

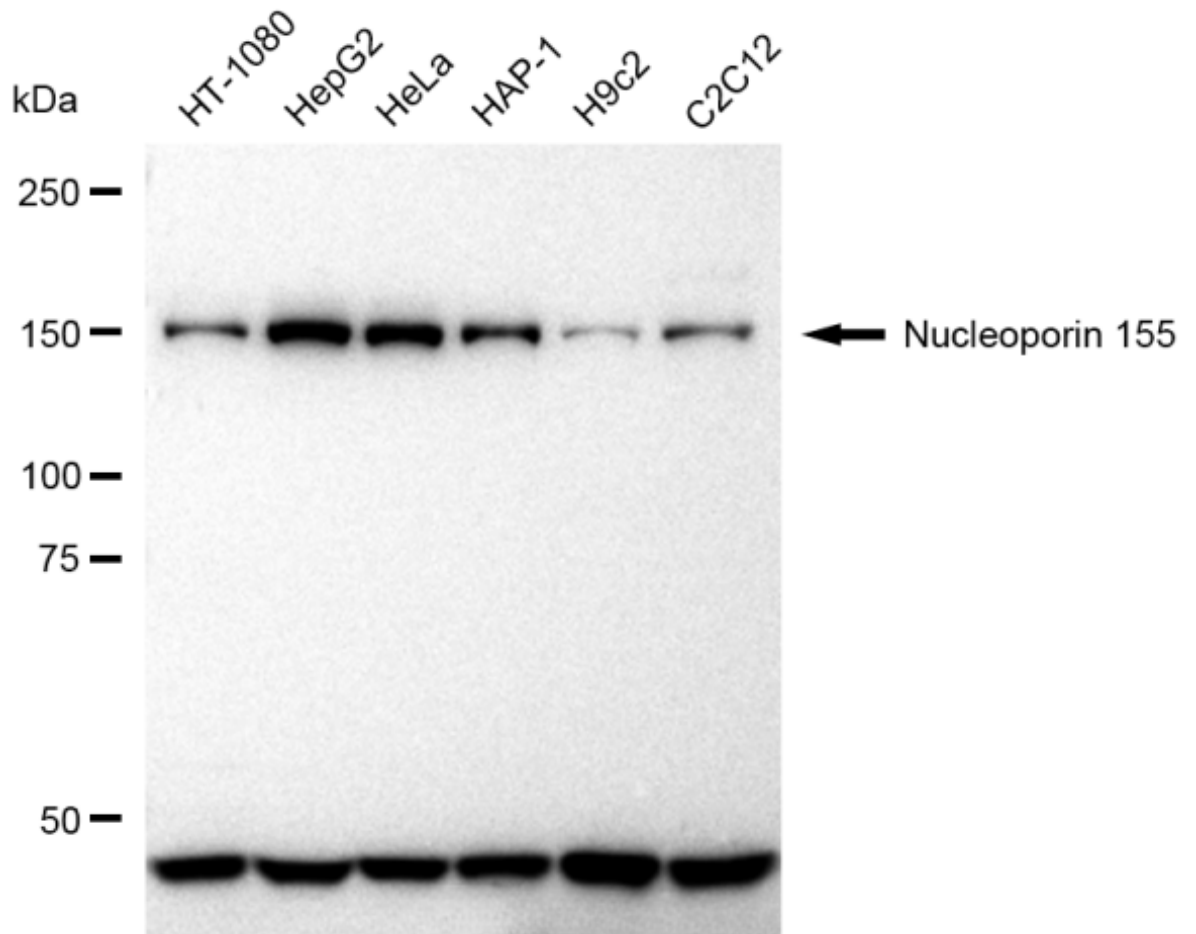
For general and specific antibody protocols please visit our website. Read all instructions before using this product.



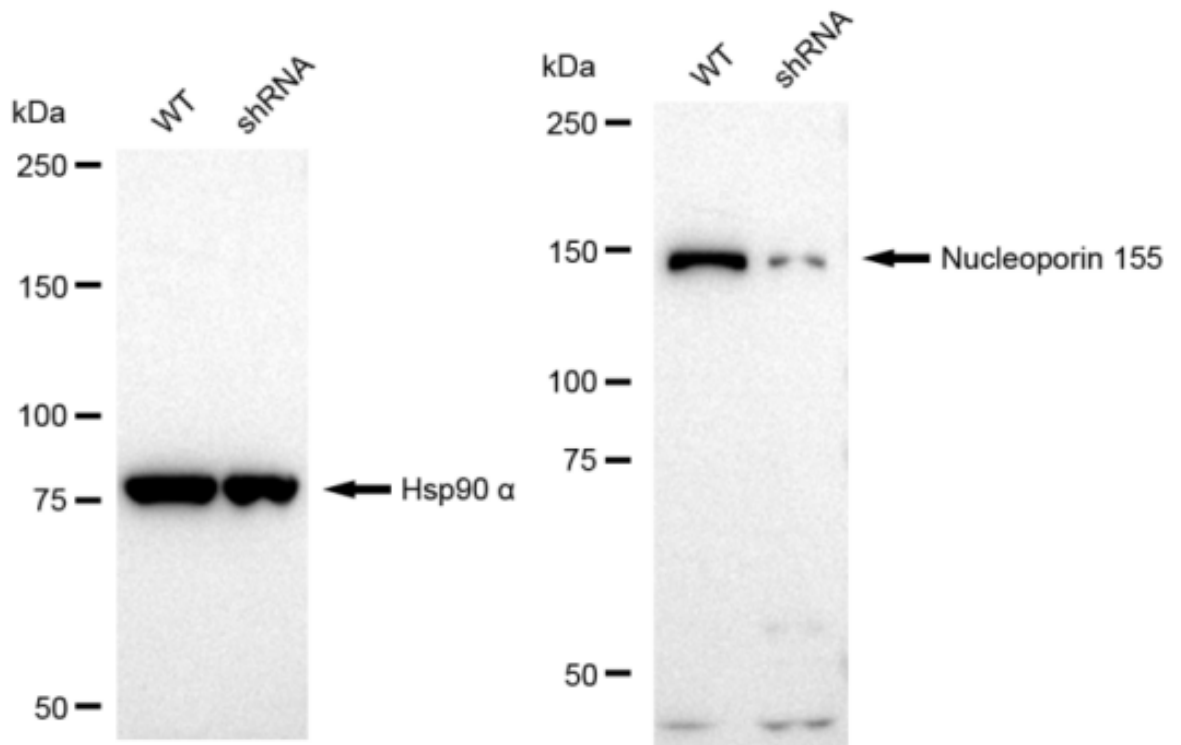
Flow cytometric analysis of Nucleoporin 155 expression in HepG2 cells using Nucleoporin 155 antibody 1:2,000. Green, isotype control; red, Nucleoporin 155.



Immunocytochemical staining of HepG2 cells with Nucleoporin 155 antibody 1:1,000. Nuclei were stained blue with DAPI; Nucleoporin 155 was stained magenta with Alexa Fluor® 647. Images were taken using Leica stellaris 5. Protein abundance based on laser Intensity and smart gain: Medium. Scale bar: 20  $\mu$ m.



Western blotting analysis using anti-Nucleoporin 155 antibody 1:5,000 and HRP-conjugated goat anti-rabbit secondary antibody 1:20,000 respectively. Image was developed using FeQ™ ECL Substrate Kit .



Western blotting analysis using anti-Nucleoporin 155 antibody 1:5,000 and HRP-conjugated goat anti-rabbit secondary antibody 1:20,000 respectively. Image was developed using FeQ™ ECL Substrate Kit .