



SunLong Biotech Co.,LTD
Tel: 0086-571- 56623320 Fax:0086-571- 56623318
E-mail:sales@sunlongbiotech.com
www.sunlongbiotech.com

[KD-Validated] Anti-NUMB Rabbit Monoclonal Antibody

Cat No.: KD-10655

Aliases:

Numb Homolog (Drosophila); Numb (Drosophila) Homolog; C14orf41; c14_5527; h-Numb; Protein Numb Homolog; S171; Protein S171; Chromosome 14 Open Reading Frame 41

Background:

UniProt Entry: [P49757](#);NCBI Gene Entry: [8650](#)

Application Information

Molecular Weight: Predicted, 71 kDa, observed, 71 kDa Clonality: Rabbit monoclonal antibody Clone ID: 23GB1070 Species Reactivity: Human, Mouse, Rat Applications Tested: Western Blotting (WB), Flow Cytometry (FCM)

Immunogen

A synthesized peptide derived from human NUMB

Isotype

Rabbit IgG

Storage Buffer

Supplied in PBS (pH 7.4) containing 50% glycerol, and 0.02% sodium azide.

Storage

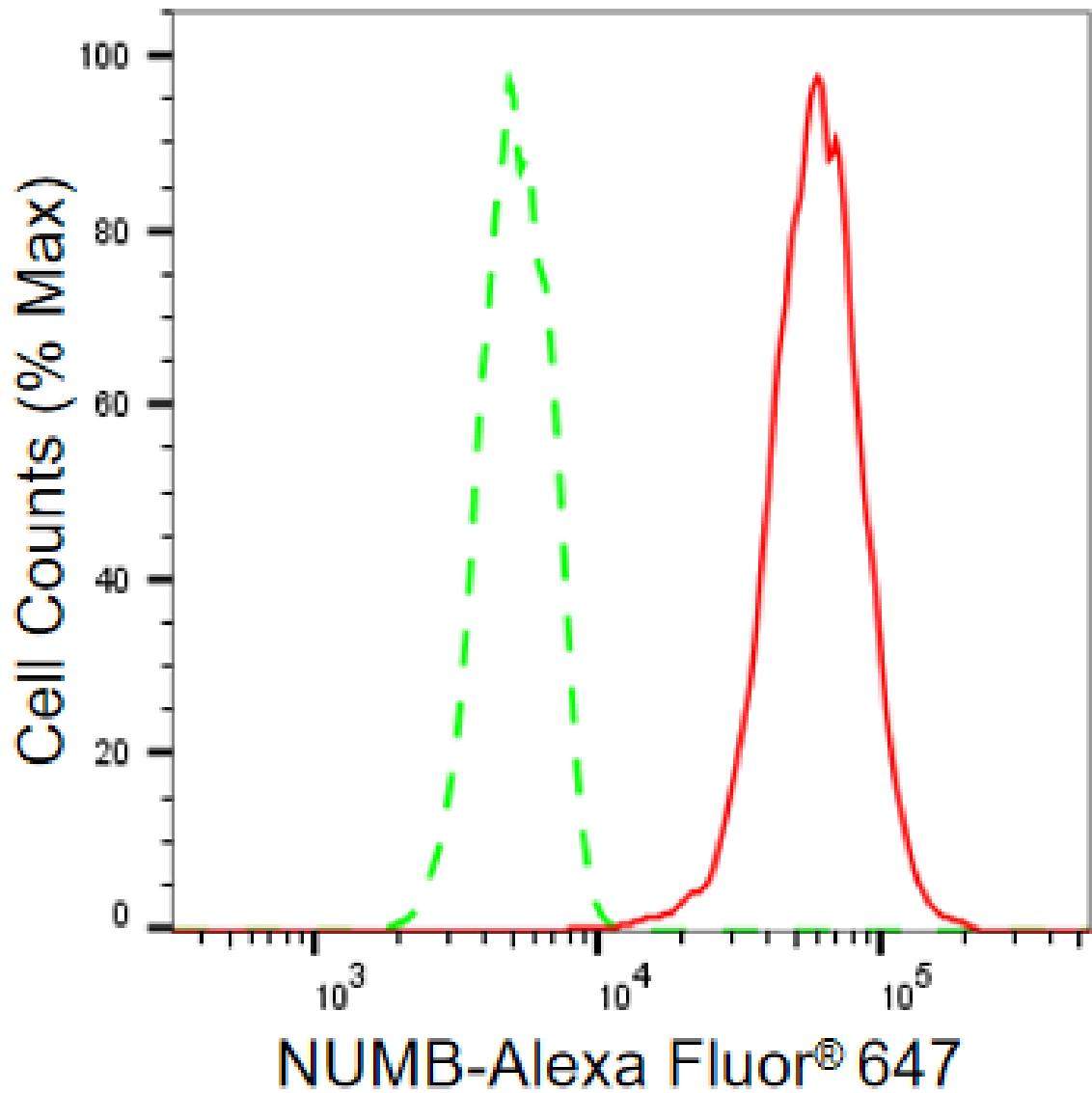
Store at -20 °C for one year.

Recommended Dilutions

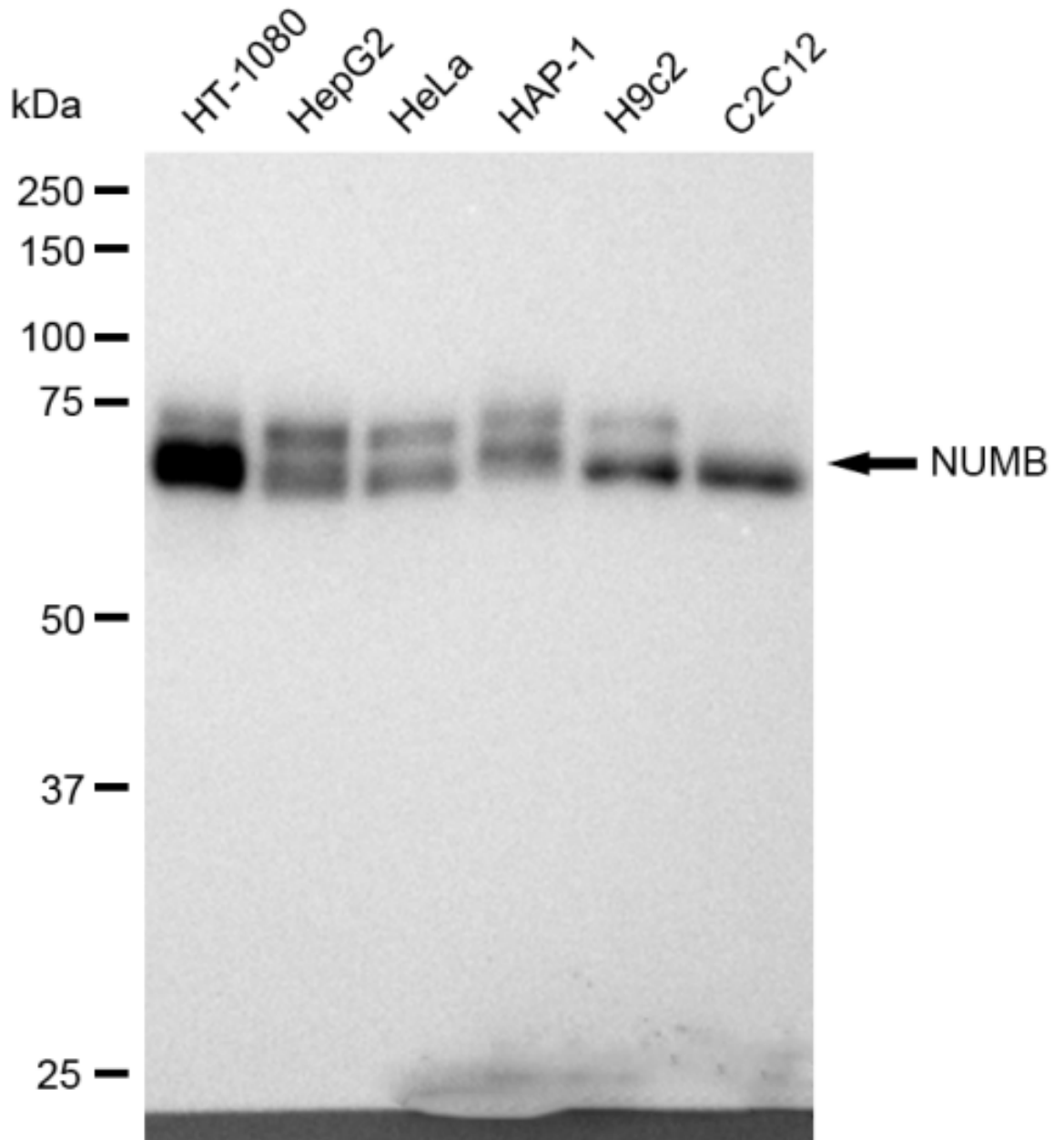
Western Blotting (WB): 1:1,000-1:5,000 Flow Cytometry (FCM): 1:2,000

Protocols

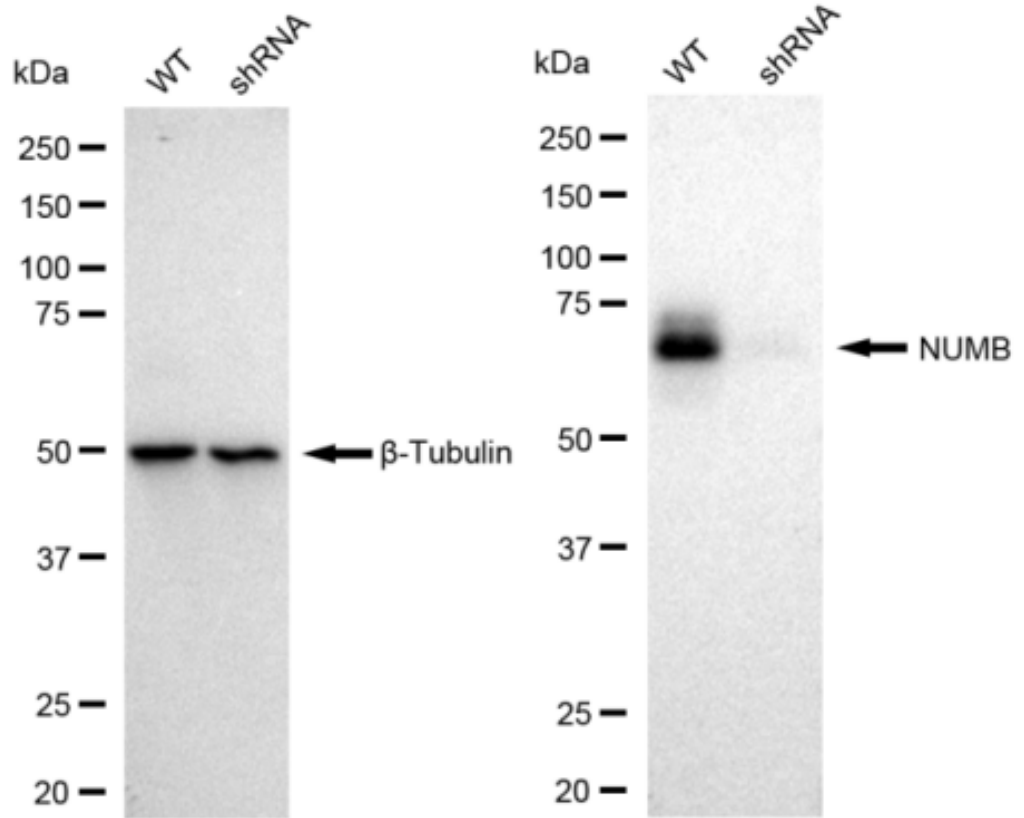
For general and specific antibody protocols please visit our website. Read all instructions before using this product.



Flow cytometric analysis of NUMB expression in HT-1080 cells using NUMB antibody 1:2,000. Green, isotype control; red, NUMB.



Western blotting analysis using anti-NUMB antibody 1:5,000 and HRP-conjugated goat anti-rabbit secondary antibody 1:50,000 respectively. Image was developed using FeQ™ ECL Substrate Kit .



Western blotting analysis using anti-NUMB antibody 1:5,000 and HRP-conjugated goat anti-rabbit secondary antibody 1:20,000 respectively. Image was developed using FeQ™ ECL Substrate Kit .